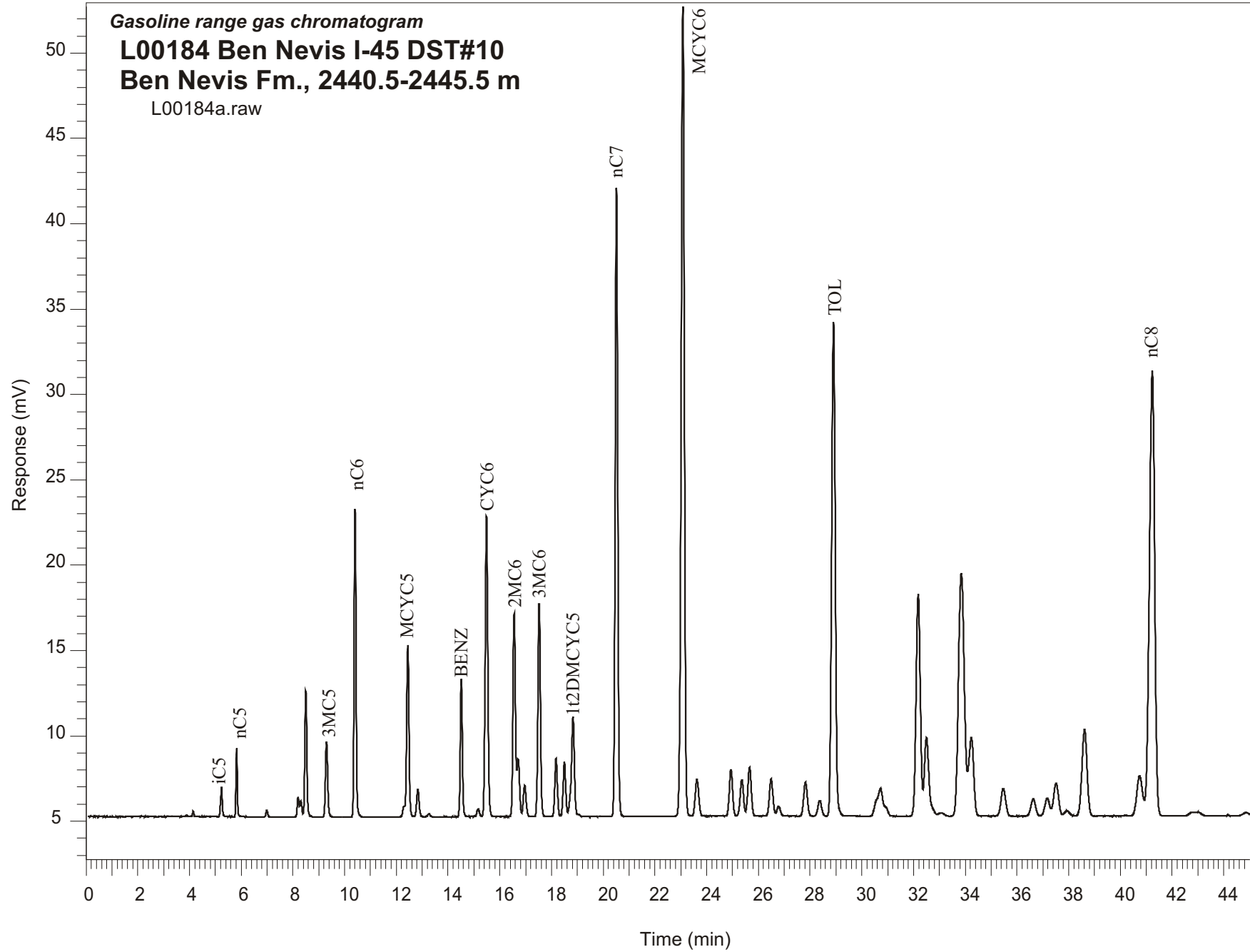


Gasoline range gas chromatogram
L00184 Ben Nevis I-45 DST#10
Ben Nevis Fm., 2440.5-2445.5 m
L00184a.raw



Sample Name: #184 Ben Nevis I-45 DST #10

GASOLINE RANGE ANALYSIS DATA

ORGANIC GEOCHEMISTRY LAB GSC CALGARY

Ret Time [min]	Compound	Area	Height [uV]
5.24	iC5	8281	1715
5.82	nC5	14182	4027
6.99	22DMC4	1896	389
8.2	CYC5	5873	1192
8.31	23DMC4	5172	959
8.5	2MC5	40456	7387
9.3	3MC5	26621	4440
10.4	nC6	92373	18044
12.3	22DMC5	3013	645
12.44	MCYC5	63203	10053
12.83	24DMC5	11029	1618
13.26	223TMC4	1153	179
14.51	Benzene	46090	8072
15.16	33DMC5	3314	469
15.49	CYC6	126439	17586
16.56	2MC6	81465	11900
16.71	23DMC5	21740	3361
16.96	11DMCYC5	13878	1837
17.52	3MC6	86467	12476
18.18	1c3DMCYC5	23675	3395
18.5	1t3DMCYC5	21739	3133
18.83	1t2DMCYC5	47402	5742
20.52	nC7	254548	36846
23.08	MCYC6	404446	47429
23.62	22DMC6	20327	2156
24.94	ECYC5	23440	2725
25.36	25DMC6	19068	2102
25.66	24DMC6	26348	2832
26.49	223TMC5	21053	2187
28.37	234TMC5	9595	914
28.91	Toluene	277562	28934
32.18	2MC7	146954	12992
34.24	3MC7	60855	4602
40.74	1c4DMCYC6	35615	2346
41.23	nC8	373760	26079