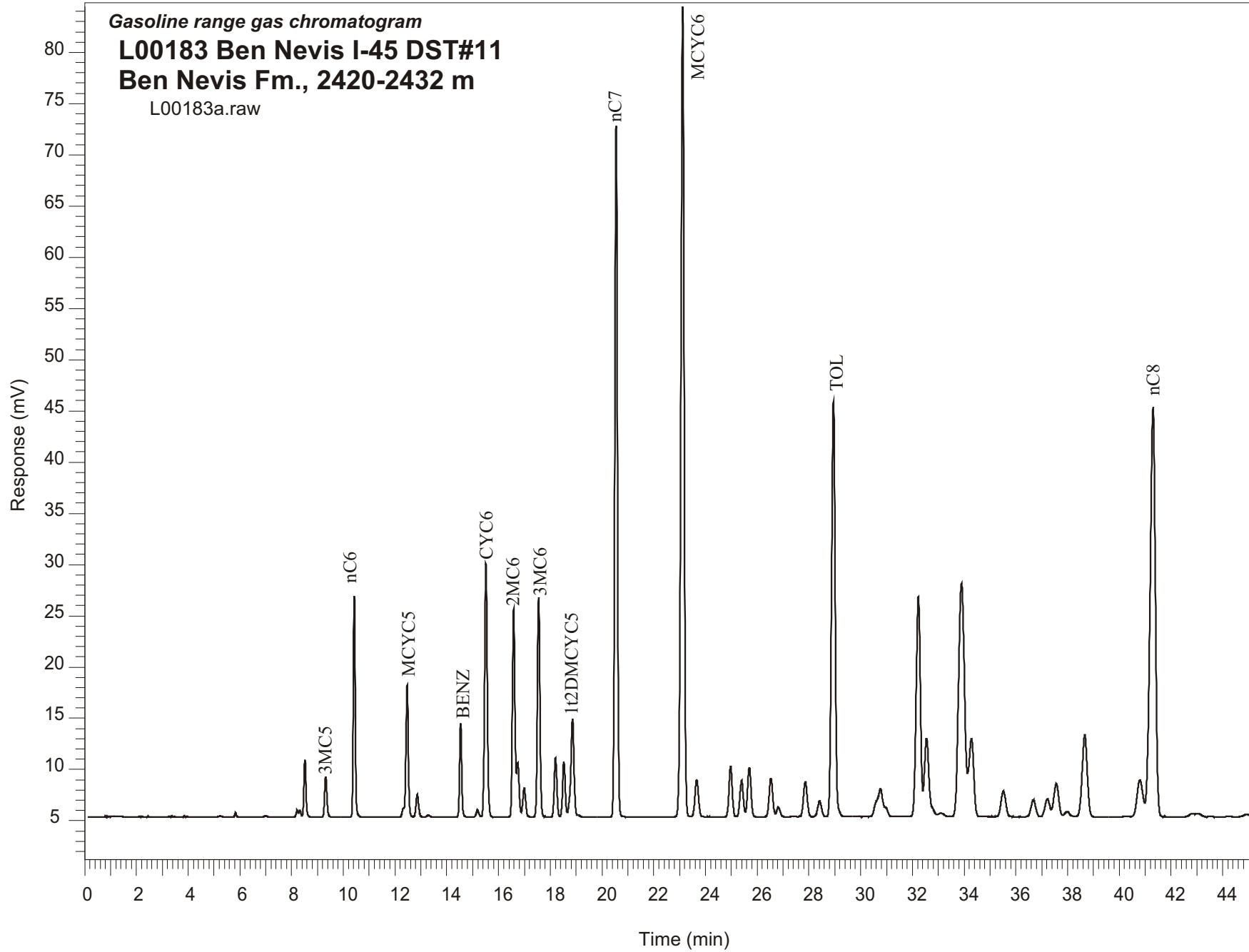


Gasoline range gas chromatogram  
**L00183 Ben Nevis I-45 DST#11**  
**Ben Nevis Fm., 2420-2432 m**  
L00183a.raw



Sample Name: #183 Ben Nevis I-45 DST#11

-----  
GASOLINE RANGE ANALYSIS DATA  
-----

ORGANIC GEOCHEMISTRY LAB GSC CALGARY  
-----

Ret Time [min]	Compound	Area	Height [uV]
5.24	iC5	491	73
5.83	nC5	1594	444
7	22DMC4	646	136
8.21	CYC5	3409	683
8.32	23DMC4	3464	631
8.51	2MC5	31774	5602
9.32	3MC5	24431	3931
10.42	nC6	111949	21640
12.47	MCYC5	86021	12869
12.86	24DMC5	15473	2197
13.28	223TMC4	1478	220
14.54	Benzene	53225	9162
15.19	33DMC5	4977	694
15.51	CYC6	182180	24733
16.59	2MC6	139071	20326
16.74	23DMC5	35315	5309
16.99	11DMCYC5	21881	2851
17.55	3MC6	148603	21433
18.2	1c3DMCYC5	40649	5771
18.53	1t3DMCYC5	37314	5314
18.86	1t2DMCYC5	80250	9474
20.55	nC7	467602	67474
23.12	MCYC6	681821	79047
23.66	22DMC6	34232	3615
24.97	ECYC5	42475	4919
25.4	25DMC6	32426	3560
25.7	24DMC6	44870	4828
26.53	223TMC5	36676	3777
28.41	234TMC5	16641	1567
28.95	Toluene	390554	40570
32.23	2MC7	243630	21449
34.28	3MC7	100055	7585
40.8	1c4DMCYC6	55512	3612
41.3	nC8	574895	39911