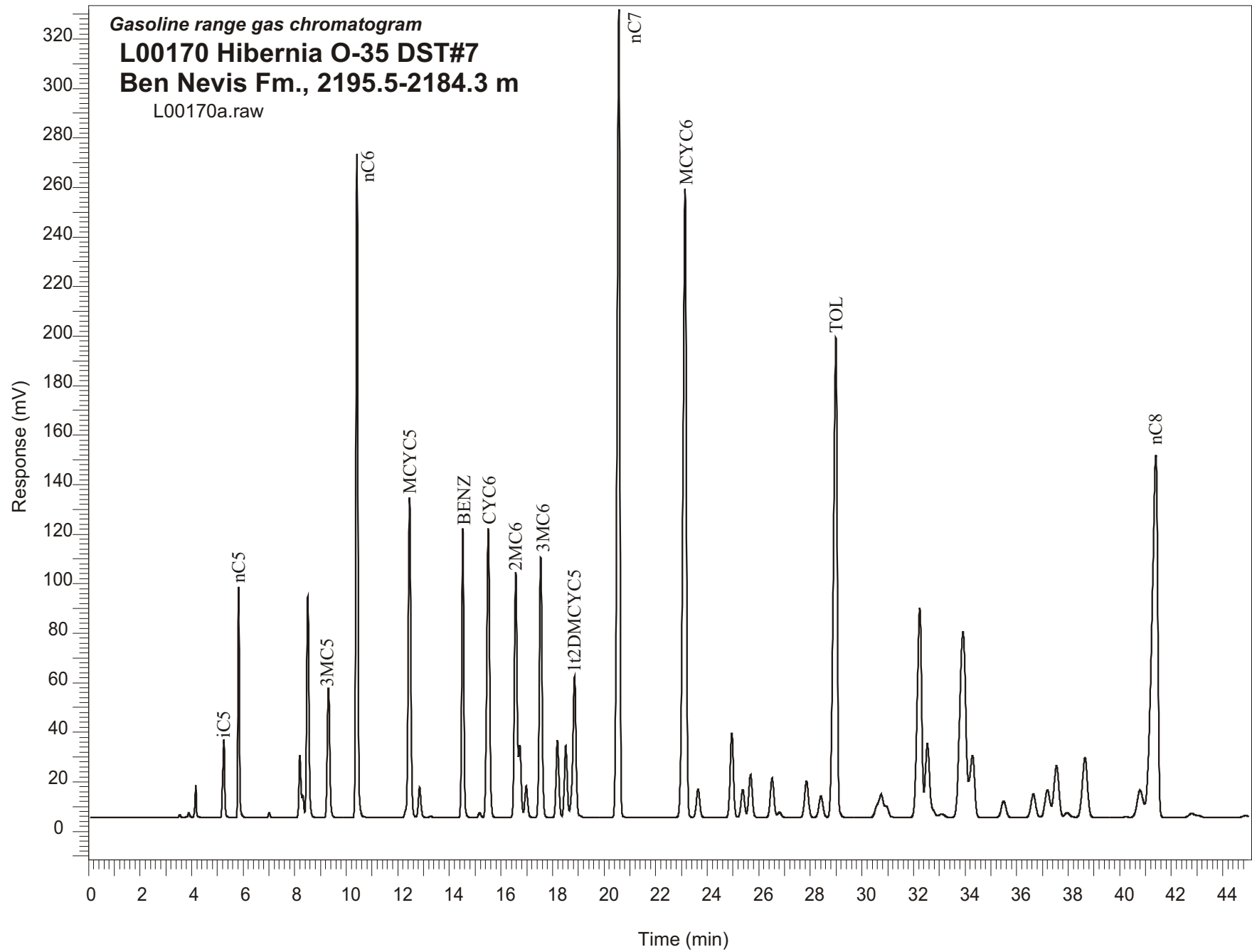


Gasoline range gas chromatogram  
L00170 Hibernia O-35 DST#7  
Ben Nevis Fm., 2195.5-2184.3 m  
L00170a.raw



Sample Name: #170 Hibernia 0-35 DST#7

-----  
GASOLINE RANGE ANALYSIS DATA  
-----

ORGANIC GEOCHEMISTRY LAB GSC CALGARY  
-----

Ret Time [min]	Compound	Area	Height [uV]
5.25	iC5	171512	31612
5.82	nC5	357463	93517
7.01	22DMC4	9189	1950
8.2	CYC5	140989	25356
8.31	23DMC4	40405	8922
8.5	2MC5	559967	89327
9.31	3MC5	351687	52218
10.41	nC6	1393473	268060
12.45	MCYC5	901468	129261
12.84	24DMC5	87952	12311
13.27	223TMC4	3940	577
14.52	Benzene	663706	116851
15.17	33DMC5	14045	1968
15.51	CYC6	923658	116880
16.58	2MC6	733580	99312
16.73	23DMC5	190676	29266
16.98	11DMCYC5	96148	12795
17.54	3MC6	779808	105099
18.19	1c3DMCYC5	238809	31139
18.52	1t3DMCYC5	225809	28978
18.86	1t2DMCYC5	503149	57127
20.58	nC7	2403727	326440
23.14	MCYC6	2381708	254033
23.64	22DMC6	105118	11523
24.96	ECYC5	299879	34068
25.38	25DMC6	107100	11390
25.68	24DMC6	165749	17274
26.52	223TMC5	158403	15872
28.41	234TMC5	96325	8694
28.99	Toluene	1968675	193767
32.24	2MC7	1013757	84736
34.29	3MC7	322863	25157
40.79	1c4DMCYC6	177490	11036
41.4	nC8	2346004	146384