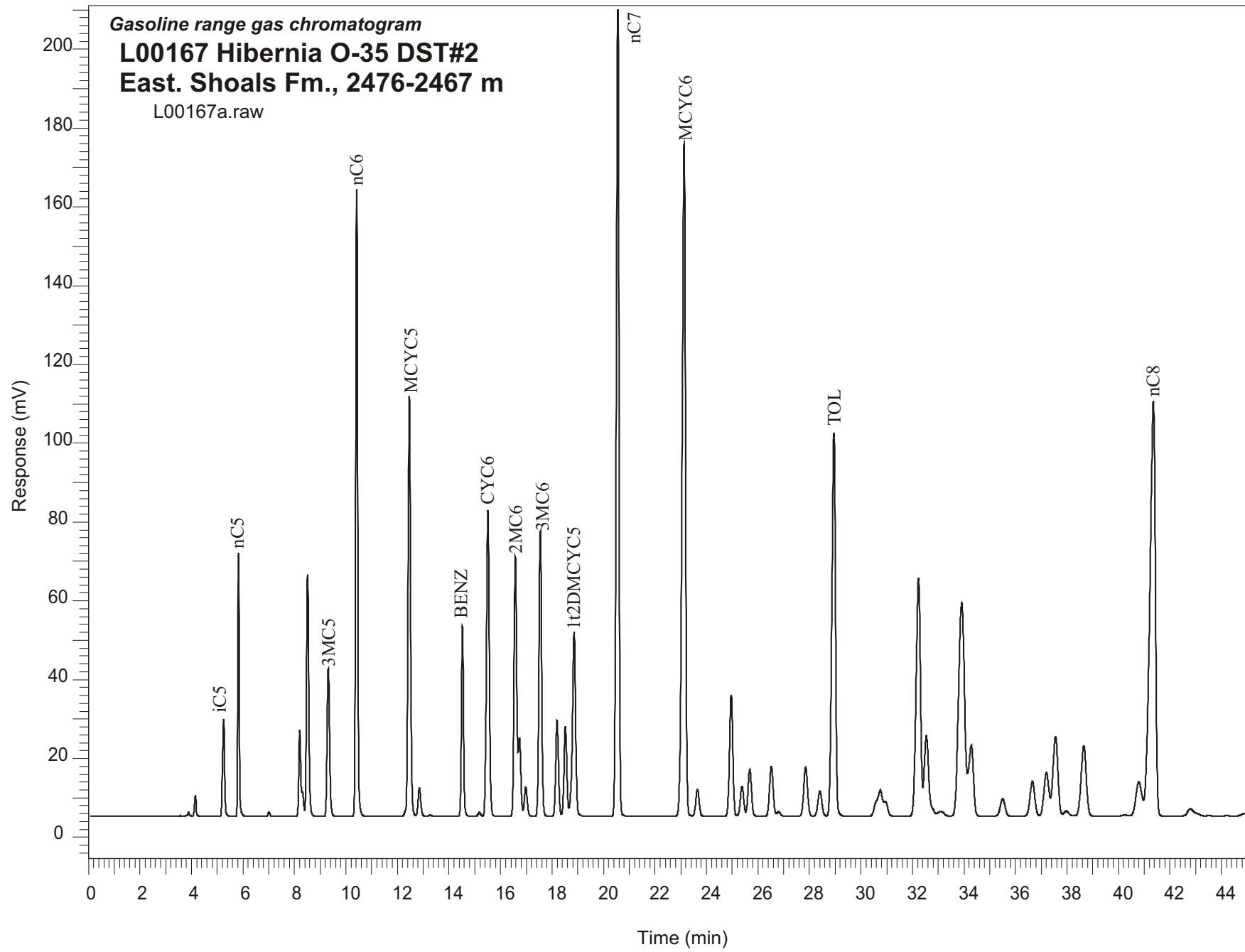


Gasoline range gas chromatogram  
**L00167 Hibernia O-35 DST#2**  
**East. Shoals Fm., 2476-2467 m**  
L00167a.raw



Sample Name: #167 Hibernia 0-35 DST#2

-----  
GASOLINE RANGE ANALYSIS DATA  
-----

ORGANIC GEOCHEMISTRY LAB GSC CALGARY  
-----

Ret Time [min]	Compound	Area	Height [uV]
5.25	iC5	142878	24641
5.82	nC5	251717	66691
7.01	22DMC4	5233	1059
8.2	CYC5	121855	22056
8.31	23DMC4	26020	6247
8.51	2MC5	379492	61518
9.31	3MC5	251804	37545
10.42	nC6	840726	159414
12.09	22DMC5	328	54
12.46	MCYC5	723340	106581
12.85	24DMC5	53714	7270
13.27	223TMC4	2230	333
14.52	Benzene	279220	48175
15.18	33DMC5	7140	988
15.51	CYC6	610792	77699
16.58	2MC6	478506	65905
16.73	23DMC5	133860	19821
16.98	11DMCYC5	57726	7493
17.55	3MC6	529354	72340
18.2	1c3DMCYC5	184627	24294
18.52	1t3DMCYC5	174571	22753
18.86	1t2DMCYC5	409392	46899
20.56	nC7	1465194	204952
23.13	MCYC6	1581979	170630
23.65	22DMC6	62513	6779
24.96	ECYC5	271677	30867
25.38	25DMC6	70479	7587
25.68	24DMC6	113137	11899
26.52	223TMC5	128088	12696
28.41	234TMC5	68978	6395
28.95	Toluene	942235	97264
32.24	2MC7	711415	60367
34.29	3MC7	231205	17942
40.79	1c4DMCYC6	138834	8637
41.36	nC8	1602038	105383