

Early Cretaceous Isachsen succession

RockEval/TOC report, Organic Geochemistry Laboratory, Geological Survey of Canada - Calgary

Database Reference: Rock-Eval Data for Canadian Borehole Cuttings, Core and Outcrop Samples

Geoscience Data Repository, Earth Sciences Sector, Natural Resources Canada

For data reference, general terms and conditions see - http://gdr.nrcan.gc.ca/terms_e.php

Geoscience Data Repository are copyright of Her Majesty the Queen in Right of Canada, 2010

GSC publication website - http://geopub.nrcan.gc.ca/moreinfo_e.php?id=223457

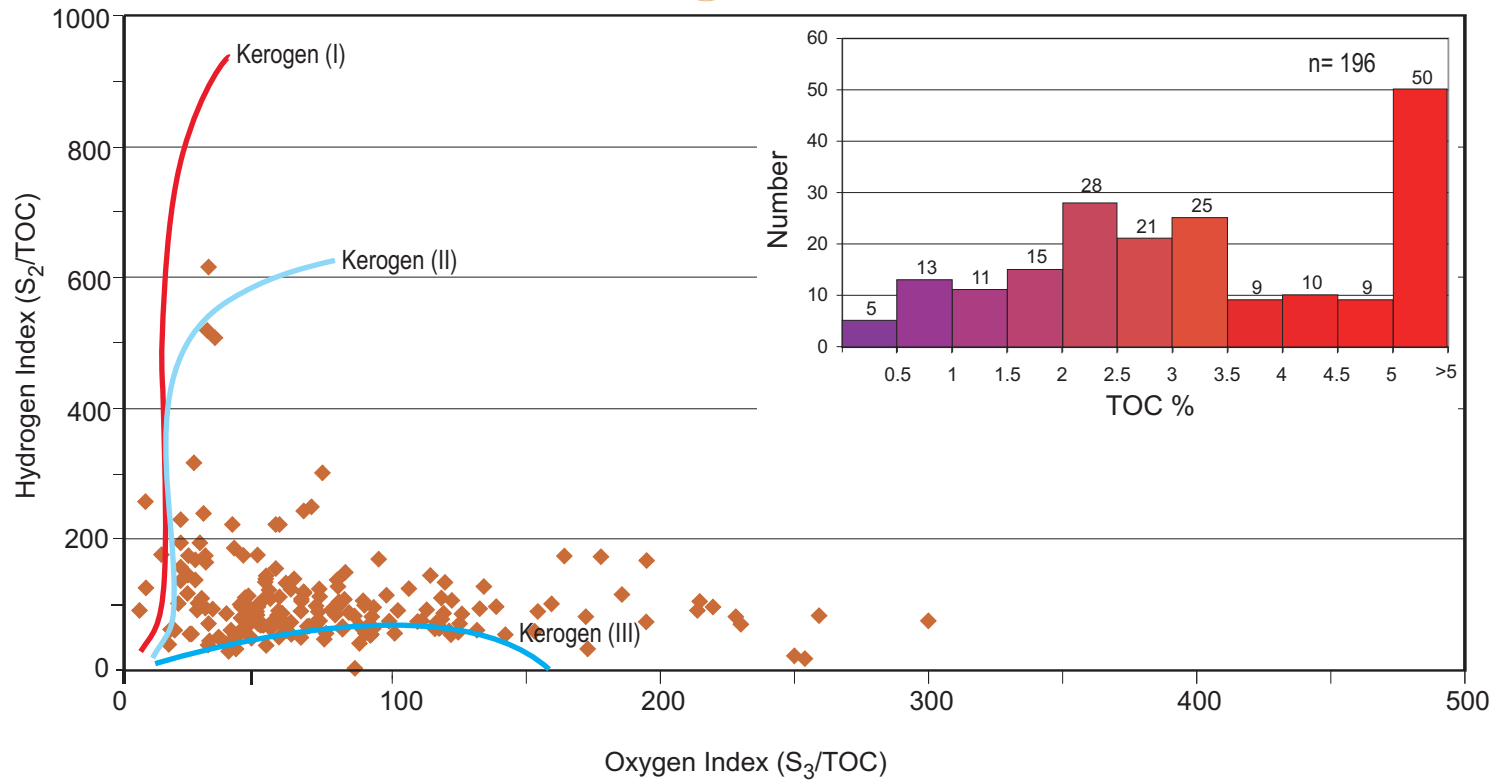
LOCATION_ID	NAME	LAT	LONG	DEPTH	TOC	TMAX	S1	S2	S3	HI	OI	PI	EQUIP	UNIT
C-133353	Geodetic Hills	79.77	-89.83	outcrop	0.25	388	0.01	0.06	6.07	24	2428	0.14	R 6	Isachsen
C-086043	Skaare Syncline	79.35	-88.08	outcrop	3.12	438	0.07	3.65	0.74	117	24	0.02	R 6	Isachsen
C-086047	Skaare Syncline	79.35	-88.08	outcrop	2.48	423	0.05	1.36	0.61	55	25	0.04	R 6	Isachsen
C-090374	Peeawahto Point	79.15	-93.33	outcrop	0.12	430	0.03	0.09	0.36	75	300	0.25	R 6	Isachsen
C-090376	Peeawahto Point	79.15	-93.33	outcrop	0.27	348	0.08	0.28	1.41	104	522	0.22	R 6	Isachsen
C-092152	Wolf Fiord	78.63	-88.35	outcrop	4.28	442	0.12	2.61	0.81	61	19	0.04	R 6	Isachsen
C-092153	Wolf Fiord	78.63	-88.35	outcrop	3.75	444	0.18	3.81	0.76	102	20	0.05	R 6	Isachsen
C-092155	Wolf Fiord	78.63	-88.35	outcrop	5.92	442	0.19	3.66	1.03	62	17	0.05	R 6	Isachsen
C-100619	Glacier Fiord	78.67	-89.75	outcrop	2.97	453	0.21	1.81	3.91	61	132	0.10	R 6	Isachsen
C-100622	Glacier Fiord	78.67	-89.75	outcrop	34.82	455	1.46	43.54	2.85	125	8	0.03	R 6	Isachsen
C-100626	Glacier Fiord	78.67	-89.75	outcrop	1.18	467	0.05	0.45	0.37	38	31	0.10	R 6	Isachsen
C-100634	Glacier Fiord	78.67	-89.75	outcrop	2.61	456	0.11	1.44	0.66	55	25	0.07	R 6	Isachsen
C-100642	Glacier Fiord	78.67	-89.75	outcrop	4.17	450	0.19	3.78	0.24	91	6	0.05	R 6	Isachsen
C-198965	Mould Bay area	76.30	-119.25	outcrop	1.95	429	0.02	0.42	4.89	22	250	0.05	R II	Isachsen
C-198965	Mould Bay area	76.30	-119.25	outcrop	1.98	438	0.01	0.35	5.03	18	254	0.03	R II	Isachsen
C-198967	Mould Bay area	76.38	-119.33	outcrop	50.73	427	0.29	37.72	50.69	74	99	0.01	R II	Isachsen
C-198967	Mould Bay area	76.38	-119.33	outcrop	54.69	427	0.29	36.69	50.09	67	91	0.01	R II	Isachsen
C-199006	Mould Bay area	76.40	-119.61	outcrop	67.74	426	2.90	168.60	47.60	249	70	0.02	R II	Isachsen
C-199006	Mould Bay area	76.40	-119.61	outcrop	65.69	425	2.62	159.32	44.66	243	67	0.02	R II	Isachsen
300A267720106300	Whitefish A-26	77.25	-106.64	1119 M	1.79	449	0.36	2.99	3.49	167	195	0.11	R II	Isachsen
300A267720106300	Whitefish A-26	77.25	-106.64	1128 M	2.40	435	0.24	1.77	2.63	74	110	0.12	R II	Isachsen
300A267720106300	Whitefish A-26	77.25	-106.64	1137 M	2.44	436	0.52	3.26	2.92	134	120	0.14	R II	Isachsen
300A267720106300	Whitefish A-26	77.25	-106.64	1146 M	13.06	434	1.97	29.02	5.28	222	40	0.06	R II	Isachsen
300A727730105000	Pat Bay A-72	77.35	-105.45	3200 F	3.41	434	0.47	2.16	3.17	63	93	0.18	R II	Isachsen
300A727730105000	Pat Bay A-72	77.35	-105.45	3500 F	4.32	433	0.26	3.06	1.36	71	31	0.08	R II	Isachsen
300A727730105000	Pat Bay A-72	77.35	-105.45	3650 F	2.91	434	0.32	2.05	1.72	70	59	0.14	R II	Isachsen
300A727730105000	Pat Bay A-72	77.35	-105.45	3750 F	3.05	433	0.27	2.52	2.62	83	86	0.10	R II	Isachsen
300A727730105000	Pat Bay A-72	77.35	-105.45	3750 F	2.67	440	0.28	2.18	2.47	82	93	0.11	R II	Isachsen
300A727730105000	Pat Bay A-72	77.35	-105.45	3750 F	1.63	433	0.21	1.21	1.17	74	72	0.15	R II	Isachsen
300A727730105000	Pat Bay A-72	77.35	-105.45	4650 F	3.35	437	0.50	3.11	1.11	93	33	0.14	R II	Isachsen
300A727730105000	Pat Bay A-72	77.35	-105.45	4700 F	4.24	441	0.33	3.28	1.96	77	46	0.09	R II	Isachsen
300A727730105000	Pat Bay A-72	77.35	-105.45	4700 F	1.94	435	0.48	2.19	0.90	113	46	0.18	R II	Isachsen
300A727730105000	Pat Bay A-72	77.35	-105.45	4750 F	2.24	438	0.18	2.05	0.61	92	27	0.08	R II	Isachsen
300A727730105000	Pat Bay A-72	77.35	-105.45	4800 F	0.80	438	0.13	0.71	0.58	89	73	0.15	R II	Isachsen
300A727730105000	Pat Bay A-72	77.35	-105.45	4850 F	0.92	436	0.10	0.65	0.46	71	50	0.13	R II	Isachsen
300A727730105000	Pat Bay A-72	77.35	-105.45	5000 F	1.55	437	0.31	1.49	1.22	96	79	0.17	R II	Isachsen
300A727730105000	Pat Bay A-72	77.35	-105.45	5050 F	1.41	437	0.24	1.29	1.09	91	77	0.16	R II	Isachsen
300A727730105000	Pat Bay A-72	77.35	-105.45	5100 F	1.01	437	0.25	1.05	0.81	104	80	0.19	R II	Isachsen
300A727730105000	Pat Bay A-72	77.35	-105.45	5150 F	0.90	438	0.29	0.82	0.92	91	102	0.26	R II	Isachsen
300A727730105000	Pat Bay A-72	77.35	-105.45	5200 F	0.88	433	0.24	0.98	0.51	111	58	0.20	R II	Isachsen
300A727730105000	Pat Bay A-72	77.35	-105.45	5300 F	1.45	445	0.20	1.57	0.96	108	66	0.11	R II	Isachsen
300A727730105000	Pat Bay A-72	77.35	-105.45	5300 F	0.86	437	0.18	0.83	0.43	97	50	0.18	R II	Isachsen

LOCATION_ID	NAME	LAT	LONG	DEPTH	TOC	TMAX	S1	S2	S3	HI	OI	PI	EQUIP	UNIT
300A727730105000	Pat Bay A-72	77.35	-105.45	5350 F	0.84	436	0.17	0.93	0.38	111	45	0.15	R II	Isachsen
300A727730105000	Pat Bay A-72	77.35	-105.45	5400 F	0.93	438	0.18	0.83	0.46	89	49	0.18	R II	Isachsen
300A727730105000	Pat Bay A-72	77.35	-105.45	5450 F	0.83	438	0.18	0.83	0.36	100	43	0.18	R II	Isachsen
300A727730105000	Pat Bay A-72	77.35	-105.45	5500 F	0.81	433	0.24	0.80	0.65	99	80	0.23	R II	Isachsen
300A727730105000	Pat Bay A-72	77.35	-105.45	5550 F	1.12	435	0.32	1.19	1.37	106	122	0.21	R II	Isachsen
300A727730105000	Pat Bay A-72	77.35	-105.45	5600 F	1.21	436	0.44	1.28	1.08	106	89	0.26	R II	Isachsen
300A727730105000	Pat Bay A-72	77.35	-105.45	5650 F	0.85	436	0.29	0.77	0.49	91	58	0.27	R II	Isachsen
300A727730105000	Pat Bay A-72	77.35	-105.45	5700 F	1.10	437	0.37	1.29	0.74	117	67	0.22	R II	Isachsen
300A737800102000	Wallis A-73	77.87	-102.45	1161 F	3.07	437	0.13	2.39	3.64	78	119	0.05	R II	Isachsen
300A737800102000	Wallis A-73	77.87	-102.45	1341 F	1.64	438	0.07	1.19	1.91	73	116	0.06	R II	Isachsen
300A737800102000	Wallis A-73	77.87	-102.45	1635 F	3.95	438	0.15	4.02	1.09	102	28	0.04	R II	Isachsen
300A737800102000	Wallis A-73	77.87	-102.45	630 M	59.09	442	0.37	40.18	30.18	68	51	0.01	R II	Isachsen
300A737800102000	Wallis A-73	77.87	-102.45	855 M	44.59	438	0.74	37.22	25.55	83	57	0.02	R II	Isachsen
300A737800102000	Wallis A-73	77.87	-102.45	1176 M	2.35	439	0.07	2.37	3.75	101	160	0.03	R II	Isachsen
300B447630108000	Drake B-44	76.39	-108.27	2050 F	3.89	429	1.41	3.16	6.70	81	172	0.31	R II	Isachsen
300B647630109300	Chads Creek B-64	76.39	-109.91	2160 F	2.01	400	0.05	0.05	1.73	2	86	0.50	R II	Isachsen
300B667730106000	Cisco B-66	77.42	-106.39	735 M	3.33	435	0.25	1.97	5.10	59	153	0.11	R II	Isachsen
300B667730106000	Cisco B-66	77.42	-106.39	750 M	2.96	435	0.21	2.65	4.57	90	154	0.07	R II	Isachsen
300B667730106000	Cisco B-66	77.42	-106.39	870 M	3.18	434	0.14	2.01	3.74	63	118	0.07	R II	Isachsen
300B667730106000	Cisco B-66	77.42	-106.39	885 M	2.20	434	0.17	1.79	5.02	81	228	0.09	R II	Isachsen
300B667730106000	Cisco B-66	77.42	-106.39	900 M	3.80	436	0.15	2.58	3.51	68	92	0.05	R II	Isachsen
300B667730106000	Cisco B-66	77.42	-106.39	915 M	15.27	434	1.57	33.93	8.64	222	57	0.04	R II	Isachsen
300B667730106000	Cisco B-66	77.42	-106.39	1037 M	0.69	443	0.15	1.03	0.57	149	83	0.13	R II	Isachsen
300C057630110300	West Hecla C-05	76.40	-110.53	1400 F	2.98	433	0.12	3.12	6.40	105	215	0.04	R II	Isachsen
300C057630110300	West Hecla C-05	76.40	-110.53	1470 F	60.71	433	3.52	106.47	30.19	175	50	0.03	R II	Isachsen
300C157720105000	Skybattle Bay C-15	77.24	-105.10	3100 F	3.75	431	0.66	2.48	3.06	66	82	0.21	R II	Isachsen
300C157720105000	Skybattle Bay C-15	77.24	-105.10	3200 F	2.21	427	0.46	2.12	2.06	96	93	0.18	R II	Isachsen
300C157720105000	Skybattle Bay C-15	77.24	-105.10	3400 F	4.50	432	0.29	3.06	2.34	68	52	0.09	R II	Isachsen
300C157720105000	Skybattle Bay C-15	77.24	-105.10	3500 F	2.34	434	0.10	1.40	2.84	60	121	0.07	R II	Isachsen
300C157720105000	Skybattle Bay C-15	77.24	-105.10	3600 F	3.33	436	0.12	2.21	2.28	66	68	0.05	R II	Isachsen
300C157720105000	Skybattle Bay C-15	77.24	-105.10	3700 F	4.88	434	0.20	4.69	2.14	96	44	0.04	R II	Isachsen
300C157720105000	Skybattle Bay C-15	77.24	-105.10	3900 F	58.66	442	0.78	58.94	29.47	100	50	0.01	R II	Isachsen
300C157720105000	Skybattle Bay C-15	77.24	-105.10	4000 F	21.33	438	0.88	39.66	8.77	186	41	0.02	R II	Isachsen
300C157720105000	Skybattle Bay C-15	77.24	-105.10	4000 F	7.65	434	0.41	12.87	2.04	168	27	0.03	R II	Isachsen
300C327630110000	East Hecla C-32	76.35	-110.23	1400 F	3.27	431	0.16	3.16	4.54	97	139	0.05	R II	Isachsen
300C527730090300	Graham C-52	77.35	-90.86	1400 F	57.05	434	7.16	49.33	33.66	86	59	0.13	R II	Isachsen
300D497540118300	Pedder Point D-49	75.64	-118.80	2250 F	8.62	433	0.81	9.32	4.50	108	52	0.08	R II	Isachsen
300D497540118300	Pedder Point D-49	75.64	-118.80	2580 F	10.04	428	0.78	24.00	2.98	239	30	0.03	R II	Isachsen
300D497540118300	Pedder Point D-49	75.64	-118.80	2580 F	19.56	429	2.17	61.83	5.09	316	26	0.03	R II	Isachsen
300D497540118300	Pedder Point D-49	75.64	-118.80	2580 F	26.57	431	1.91	60.93	5.62	229	21	0.03	R II	Isachsen
300D497540118300	Pedder Point D-49	75.64	-118.80	2580 F	26.53	437	1.55	46.21	6.40	174	24	0.03	R II	Isachsen
300D497540118300	Pedder Point D-49	75.64	-118.80	2840 F	3.75	435	0.18	2.97	2.15	79	57	0.06	R II	Isachsen
300D497540118300	Pedder Point D-49	75.64	-118.80	3300 F	2.64	434	0.25	2.40	1.26	91	48	0.09	R II	Isachsen
300D497540118300	Pedder Point D-49	75.64	-118.80	3550 F	1.85	434	0.20	2.26	1.00	122	54	0.08	R II	Isachsen
300D587740100000	Balaena D-58	77.62	-100.37	320 M	1.93	427	0.50	3.34	3.43	173	178	0.13	R 6	Isachsen
300D587740100000	Balaena D-58	77.62	-100.37	440 M	0.40	392	0.54	0.89	0.23	222	58	0.38	R 6	Isachsen
300D587740100000	Balaena D-58	77.62	-100.37	500 M	7.81	426	0.27	7.38	6.16	94	79	0.04	R 6	Isachsen
300D587740100000	Balaena D-58	77.62	-100.37	560 M	0.80	423	0.06	0.72	0.53	90	66	0.07	R 6	Isachsen
300D587740100000	Balaena D-58	77.62	-100.37	620 M	2.83	426	0.21	3.18	2.07	112	73	0.06	R 6	Isachsen
300D587740100000	Balaena D-58	77.62	-100.37	680 M	2.60	429	0.12	2.40	2.94	92	113	0.05	R 6	Isachsen

LOCATION_ID	NAME	LAT	LONG	DEPTH	TOC	TMAX	S1	S2	S3	HI	OI	PI	EQUIP	UNIT
300D587740100000	Balaena D-58	77.62	-100.37	740 M	3.61	427	0.14	3.18	3.02	88	84	0.04	R 6	Isachsen
300D587740100000	Balaena D-58	77.62	-100.37	800 M	2.22	430	0.18	2.03	4.76	91	214	0.08	R 6	Isachsen
300D587740100000	Balaena D-58	77.62	-100.37	860 M	1.66	428	0.16	1.89	1.62	114	98	0.08	R 6	Isachsen
300D737630108000	Drake D-73	76.37	-108.49	2220 F	4.06	435	0.33	2.83	9.34	70	230	0.10	R II	Isachsen
300D737630108000	Drake D-73	76.37	-108.49	2400 F	3.28	434	0.20	4.73	3.75	144	114	0.04	R II	Isachsen
300E787630108000	Drake E-78	76.46	-108.49	1800 F	3.98	438	0.33	3.31	10.32	83	259	0.09	R II	Isachsen
300F147620108300	Sherard Bay F-14	76.22	-108.60	2400 F	3.43	439	0.18	3.96	6.37	115	186	0.04	R II	Isachsen
300F167630108300	Drake F-16	76.42	-108.59	1800 F	3.48	433	0.52	4.44	4.67	128	134	0.10	R II	Isachsen
300F547710110000	Hazen F-54	77.05	-110.35	330 M	15.19	438	7.48	26.72	2.13	176	14	0.22	R II	Isachsen
300F547710110000	Hazen F-54	77.05	-110.35	745 M	3.17	440	0.48	4.32	0.67	136	21	0.10	R II	Isachsen
300F547710110000	Hazen F-54	77.05	-110.35	833 M	8.02	436	1.61	20.58	0.64	257	8	0.07	R II	Isachsen
300F547710110000	Hazen F-54	77.05	-110.35	918 M	2.29	441	0.56	3.15	0.61	138	27	0.15	R II	Isachsen
300F627630110000	East Hecla F-62	76.35	-110.41	1070 F	4.98	437	0.33	4.31	5.94	87	119	0.07	R II	Isachsen
300F767630108000	Drake F-76	76.42	-108.48	1750 F	3.29	435	0.30	3.17	7.23	96	220	0.09	R II	Isachsen
300G077740099300	Char G-07	77.61	-99.52	470 M	2.14	436	0.06	1.35	2.48	63	116	0.04	R 6	Isachsen
300G077740099300	Char G-07	77.61	-99.52	500 M	1.11	435	0.01	0.36	1.92	32	173	0.03	R 6	Isachsen
300G077740099300	Char G-07	77.61	-99.52	530 M	31.88	424	0.16	24.03	23.40	75	73	0.01	R 6	Isachsen
300G077740099300	Char G-07	77.61	-99.52	560 M	3.61	432	0.03	2.01	3.64	56	101	0.01	R 6	Isachsen
300G077740099300	Char G-07	77.61	-99.52	590 M	2.01	438	0.02	1.30	2.37	65	118	0.01	R 6	Isachsen
300G077740099300	Char G-07	77.61	-99.52	680 M	2.16	435	0.05	1.63	2.39	75	111	0.03	R 6	Isachsen
300G077740099300	Char G-07	77.61	-99.52	740 M	1.59	434	0.01	0.89	1.43	56	90	0.01	R 6	Isachsen
300G077740099300	Char G-07	77.61	-99.52	800 M	6.96	405	0.39	11.76	6.63	169	95	0.03	R 6	Isachsen
300G077740099300	Char G-07	77.61	-99.52	860 M	13.36	438	0.06	7.05	12.35	53	92	0.01	R 6	Isachsen
300G077740099300	Char G-07	77.61	-99.52	920 M	0.76	430	0.02	0.41	0.93	54	122	0.05	R 6	Isachsen
300H497650108300	North Sabine H-49	76.80	-108.75	6570 F	2.70	438	0.21	2.32	1.03	86	38	0.08	R II	Isachsen
300H637720106300	Whitefish H-63	77.20	-106.88	875 M	3.28	426	2.57	4.51	2.61	138	80	0.36	R II	Isachsen
300H637720106300	Whitefish H-63	77.20	-106.88	893 M	3.21	428	2.83	4.46	1.70	139	53	0.39	R II	Isachsen
300H637720106300	Whitefish H-63	77.20	-106.88	912 M	4.30	430	2.60	6.18	2.28	144	53	0.30	R II	Isachsen
300H637720106300	Whitefish H-63	77.20	-106.88	1012 M	2.48	433	0.36	2.68	2.04	108	82	0.12	R II	Isachsen
300H637720106300	Whitefish H-63	77.20	-106.88	1027 M	2.49	437	0.41	1.75	1.79	70	72	0.19	R II	Isachsen
300H637720106300	Whitefish H-63	77.20	-106.88	1039 M	2.25	438	0.32	1.06	1.68	47	75	0.23	R II	Isachsen
300H637720106300	Whitefish H-63	77.20	-106.88	1048 M	2.91	435	0.49	1.45	1.92	50	66	0.25	R II	Isachsen
300H637720106300	Whitefish H-63	77.20	-106.88	1066 M	4.97	434	1.32	8.70	2.21	175	44	0.13	R II	Isachsen
300H637720106300	Whitefish H-63	77.20	-106.88	1075 M	3.11	435	0.96	4.12	1.88	132	60	0.19	R II	Isachsen
300H637720106300	Whitefish H-63	77.20	-106.88	1084 M	2.54	433	0.44	1.53	1.54	60	61	0.22	R II	Isachsen
300H637720106300	Whitefish H-63	77.20	-106.88	1099 M	4.20	431	0.55	6.91	1.28	165	30	0.07	R II	Isachsen
300H637720106300	Whitefish H-63	77.20	-106.88	1154 M	2.37	432	0.17	1.73	1.42	73	60	0.09	R II	Isachsen
300H637720106300	Whitefish H-63	77.20	-106.88	1181 M	9.73	432	4.09	59.82	3.07	615	32	0.06	R II	Isachsen
300H637720106300	Whitefish H-63	77.20	-106.88	1187 M	8.76	435	2.83	44.40	2.97	507	34	0.06	R II	Isachsen
300H637720106300	Whitefish H-63	77.20	-106.88	1196 M	8.38	435	2.23	43.39	2.60	518	31	0.05	R II	Isachsen
300H637720106300	Whitefish H-63	77.20	-106.88	1203 M	69.27	437	3.87	100.30	16.53	145	24	0.04	R II	Isachsen
300H637720106300	Whitefish H-63	77.20	-106.88	1230 M	1.36	439	0.10	0.88	0.61	65	45	0.10	R II	Isachsen
300I697620110000	Hecla I-69	76.31	-110.39	1600 F	4.15	434	0.65	5.15	4.41	124	106	0.11	R II	Isachsen
300I727740103300	Maclean I-72	77.53	-103.94	408 M	14.84	441	0.37	14.64	13.32	99	90	0.02	R II	Isachsen
300I727740103300	Maclean I-72	77.53	-103.94	423 M	64.02	433	0.46	43.33	29.58	68	46	0.01	R II	Isachsen
300I727740103300	Maclean I-72	77.53	-103.94	423 M	16.92	429	0.31	17.78	11.20	105	66	0.02	R II	Isachsen
300I727740103300	Maclean I-72	77.53	-103.94	423 M	15.15	428	0.30	18.77	11.03	124	73	0.02	R II	Isachsen
300I727740103300	Maclean I-72	77.53	-103.94	438 M	6.24	432	0.03	3.61	2.72	58	44	0.01	R II	Isachsen
300I727740103300	Maclean I-72	77.53	-103.94	453 M	5.64	433	0.04	4.73	2.80	84	50	0.01	R II	Isachsen
300I727740103300	Maclean I-72	77.53	-103.94	468 M	2.95	434	0.03	3.21	1.61	109	55	0.01	R II	Isachsen

LOCATION_ID	NAME	LAT	LONG	DEPTH	TOC	TMAX	S1	S2	S3	HI	OI	PI	EQUIP	UNIT
300I727740103300	Macleaen I-72	77.53	-103.94	483 M	1.78	439	0.02	0.89	1.03	50	58	0.02	R II	Isachsen
300I727740103300	Macleaen I-72	77.53	-103.94	498 M	6.23	436	0.07	3.98	3.41	64	55	0.02	R II	Isachsen
300I727740103300	Macleaen I-72	77.53	-103.94	513 M	4.59	435	0.07	2.86	3.74	62	81	0.02	R II	Isachsen
300I727740103300	Macleaen I-72	77.53	-103.94	528 M	4.80	436	0.11	3.25	4.21	68	88	0.03	R II	Isachsen
300I727740103300	Macleaen I-72	77.53	-103.94	543 M	2.31	436	0.04	0.94	2.03	41	88	0.04	R II	Isachsen
300I727740103300	Macleaen I-72	77.53	-103.94	558 M	2.74	435	0.06	1.49	2.53	54	92	0.04	R II	Isachsen
300I727740103300	Macleaen I-72	77.53	-103.94	573 M	7.57	430	0.33	22.78	5.61	301	74	0.01	R II	Isachsen
300I727740103300	Macleaen I-72	77.53	-103.94	588 M	3.01	435	0.06	2.53	2.37	84	79	0.02	R II	Isachsen
300I727740103300	Macleaen I-72	77.53	-103.94	603 M	63.74	432	0.79	60.46	29.29	95	46	0.01	R II	Isachsen
300I727740103300	Macleaen I-72	77.53	-103.94	603 M	13.56	436	0.26	18.88	8.60	139	63	0.01	R II	Isachsen
300I727740103300	Macleaen I-72	77.53	-103.94	618 M	13.28	432	0.28	17.82	7.01	134	53	0.02	R II	Isachsen
300I727740103300	Macleaen I-72	77.53	-103.94	633 M	5.20	435	0.04	4.12	2.27	79	44	0.01	R II	Isachsen
300I727740103300	Macleaen I-72	77.53	-103.94	648 M	5.34	432	0.07	4.98	2.52	93	47	0.01	R II	Isachsen
300I727740103300	Macleaen I-72	77.53	-103.94	663 M	12.25	433	0.26	15.10	7.63	123	62	0.02	R II	Isachsen
300I727740103300	Macleaen I-72	77.53	-103.94	678 M	4.28	460	0.07	3.04	5.36	71	125	0.02	R II	Isachsen
300I727740103300	Macleaen I-72	77.53	-103.94	693 M	4.54	437	0.10	4.45	3.25	98	72	0.02	R II	Isachsen
300I727740103300	Macleaen I-72	77.53	-103.94	708 M	2.41	438	0.06	2.25	3.20	93	133	0.03	R II	Isachsen
300I727740103300	Macleaen I-72	77.53	-103.94	723 M	3.37	443	0.03	1.88	2.54	56	75	0.02	R II	Isachsen
300I727740103300	Macleaen I-72	77.53	-103.94	738 M	5.73	434	0.20	8.88	3.25	155	57	0.02	R II	Isachsen
300I727740103300	Macleaen I-72	77.53	-103.94	753 M	2.71	437	0.06	1.99	5.28	73	195	0.03	R II	Isachsen
300I727740103300	Macleaen I-72	77.53	-103.94	768 M	1.24	437	0.01	1.58	0.99	127	80	0.01	R II	Isachsen
300I727740103300	Macleaen I-72	77.53	-103.94	783 M	0.26	447	0.00	0.14	0.37	54	142	0.00	R II	Isachsen
300J437650109300	Roche Point O-43	76.71	-109.77	4570 F	12.32	435	0.07	4.84	2.05	39	17	0.01	R II	Isachsen
300K337640108300	Collingwood K-33	76.55	-108.72	2980 F	2.68	434	0.01	1.00	1.42	37	53	0.01	R II	Isachsen
300K627800102000	Wallis K-62	77.86	-102.42	1920 F	2.30	434	0.34	1.97	2.90	86	126	0.15	R II	Isachsen
300K797630108300	Drake Point K-79	76.48	-108.98	2350 F	4.70	437	0.29	2.71	5.86	58	125	0.10	R II	Isachsen
300K797630108300	Drake Point K-79	76.48	-108.98	2351 F	50.84	429	3.72	31.01	20.33	61	40	0.11	R II	Isachsen
300M117720105000	Skybattle Bay M-11	77.18	-105.11	761 M	2.61	431	0.14	0.75	1.02	29	39	0.16	R II	Isachsen
300M117720105000	Skybattle Bay M-11	77.18	-105.11	771 M	2.43	438	0.20	0.96	0.93	40	38	0.17	R II	Isachsen
300M117720105000	Skybattle Bay M-11	77.18	-105.11	780 M	2.37	438	0.13	1.05	0.87	44	37	0.11	R II	Isachsen
300M117720105000	Skybattle Bay M-11	77.18	-105.11	789 M	3.36	439	0.23	1.49	1.07	44	32	0.13	R II	Isachsen
300M117720105000	Skybattle Bay M-11	77.18	-105.11	798 M	3.40	441	0.56	3.38	0.96	99	28	0.14	R II	Isachsen
300M117720105000	Skybattle Bay M-11	77.18	-105.11	807 M	1.86	437	0.24	0.64	0.74	34	40	0.27	R II	Isachsen
300M117720105000	Skybattle Bay M-11	77.18	-105.11	816 M	4.78	435	2.34	9.28	1.35	194	28	0.20	R II	Isachsen
300M117720105000	Skybattle Bay M-11	77.18	-105.11	891 M	3.06	439	0.83	3.34	0.89	109	29	0.20	R II	Isachsen
300M117720105000	Skybattle Bay M-11	77.18	-105.11	897 M	3.32	430	0.62	6.44	0.70	194	21	0.09	R II	Isachsen
300M117720105000	Skybattle Bay M-11	77.18	-105.11	903 M	2.64	434	0.27	2.50	0.80	95	30	0.10	R II	Isachsen
300M117720105000	Skybattle Bay M-11	77.18	-105.11	909 M	1.90	440	0.05	0.95	0.67	50	35	0.05	R II	Isachsen
300M117720105000	Skybattle Bay M-11	77.18	-105.11	915 M	2.17	438	0.07	1.07	0.90	49	41	0.06	R II	Isachsen
300M117720105000	Skybattle Bay M-11	77.18	-105.11	921 M	2.17	438	0.27	1.41	1.18	65	54	0.16	R II	Isachsen
300M117720105000	Skybattle Bay M-11	77.18	-105.11	927 M	2.89	438	0.28	1.55	1.20	54	42	0.15	R II	Isachsen
300M117720105000	Skybattle Bay M-11	77.18	-105.11	933 M	2.23	440	0.13	1.09	1.06	49	48	0.11	R II	Isachsen
300M117720105000	Skybattle Bay M-11	77.18	-105.11	939 M	4.31	442	0.67	7.51	1.31	174	30	0.08	R II	Isachsen
300M117720105000	Skybattle Bay M-11	77.18	-105.11	945 M	2.64	438	0.27	1.55	1.14	59	43	0.15	R II	Isachsen
300M407810101300	Elve M-40	78.17	-101.83	270 F	3.04	434	0.25	0.98	1.27	32	42	0.20	R II	Isachsen
302H637720106300	Whitefish 2H-63	77.21	-106.89	871 M	5.78	430	6.01	6.34	6.84	110	118	0.49	R II	Isachsen
302H637720106300	Whitefish 2H-63	77.21	-106.89	875 M	2.88	436	0.73	1.94	1.99	67	69	0.27	R II	Isachsen
302H637720106300	Whitefish 2H-63	77.21	-106.89	899 M	5.67	427	2.81	6.76	3.80	119	67	0.29	R II	Isachsen
302H637720106300	Whitefish 2H-63	77.21	-106.89	999 M	1.19	437	0.15	0.87	0.74	73	62	0.15	R II	Isachsen
302H637720106300	Whitefish 2H-63	77.21	-106.89	1015 M	1.65	438	0.18	0.90	1.03	55	62	0.17	R II	Isachsen

LOCATION_ID	NAME	LAT	LONG	DEPTH	TOC	TMAX	S1	S2	S3	HI	OI	PI	EQUIP	UNIT
302H637720106300	Whitefish 2H-63	77.21	-106.89	1024 M	3.36	434	1.22	5.85	5.52	174	164	0.17	R II	Isachsen
302H637720106300	Whitefish 2H-63	77.21	-106.89	1030 M	2.27	437	0.37	1.73	1.27	76	56	0.18	R II	Isachsen
302H637720106300	Whitefish 2H-63	77.21	-106.89	1045 M	2.23	433	1.16	1.85	1.09	83	49	0.39	R II	Isachsen
302H637720106300	Whitefish 2H-63	77.21	-106.89	1075 M	75.87	435	5.39	119.20	16.03	157	21	0.04	R II	Isachsen



Early Cretaceous Isachsen succession