

Late Triassic-Early Jurassic Barrow-Heiberg succession

RockEval/TOC report, Organic Geochemistry Laboratory, Geological Survey of Canada - Calgary

Database Reference: Rock-Eval Data for Canadian Borehole Cuttings, Core and Outcrop Samples

Geoscience Data Repository, Earth Sciences Sector, Natural Resources Canada

For data reference, general terms and conditions see - http://gdr.nrcan.gc.ca/terms_e.php

Geoscience Data Repository are copyright of Her Majesty the Queen in Right of Canada, 2010

GSC publication website - http://geopub.nrcan.gc.ca/moreinfo_e.php?id=223457

LOCATION_ID	NAME	LAT	LONG	DEPTH	TOC	TMAX	S1	S2	S3	HI	OI	PI	EQUIP	UNIT
C-134742	New Boots Glacier	78.73	-88.70	outcrop	0.63	339	0.11	0.47	0.20	75	32	0.19	R 6	Heiberg
C-134741	New Boots Glacier	78.73	-88.70	outcrop	1.12	470	0.09	0.77	0.19	69	17	0.10	R 6	Heiberg
C-134738	New Boots Glacier	78.73	-88.70	outcrop	7.94	472	0.31	8.05	0.46	101	6	0.04	R 6	Heiberg
C-092145	New Boots Glacier	78.73	-89.65	outcrop	2.82	486	0.13	1.31	0.33	46	12	0.09	R 6	Heiberg
C-092142	New Boots Glacier	78.73	-89.65	outcrop	1.92	479	0.05	0.98	0.15	51	8	0.05	R 6	Heiberg
C-036865	Cornwallis Island	77.73	-95.22	outcrop	1.20	354	0.11	0.23	0.19	19	16	0.32	R 6	Heiberg
302K157750099000	Cape Macmillan 2K-15	77.74	-99.10	1471 M	75.24	434	6.55	110.49	8.19	147	11	0.06	R II	Heiberg
302K157750099000	Cape Macmillan 2K-15	77.74	-99.10	1576 M	14.64	434	1.72	27.02	2.57	185	18	0.06	R II	Heiberg
302K157750099000	Cape Macmillan 2K-15	77.74	-99.10	1945 M	1.46	439	0.08	1.05	1.52	72	104	0.07	R II	Barrow
302K157750099000	Cape Macmillan 2K-15	77.74	-99.10	1999 M	1.49	440	0.12	0.99	0.84	66	56	0.11	R II	Barrow
302K157750099000	Cape Macmillan 2K-15	77.74	-99.10	2074 M	1.05	441	0.09	0.99	0.52	94	50	0.08	R II	Barrow
302H637720106300	Whitefish 2H-63	77.21	-106.89	2109 M	1.69	441	0.48	2.82	1.00	167	59	0.15	R II	King Christian
302H637720106300	Whitefish 2H-63	77.21	-106.89	2124 M	0.89	441	0.35	1.82	1.16	204	130	0.16	R II	King Christian
302H637720106300	Whitefish 2H-63	77.21	-106.89	2139 M	0.98	446	0.34	1.99	0.50	203	51	0.15	R II	Lougheed Island
302H637720106300	Whitefish 2H-63	77.21	-106.89	2154 M	0.90	441	0.25	1.64	0.33	182	37	0.13	R II	Lougheed Island
302H637720106300	Whitefish 2H-63	77.21	-106.89	2169 M	1.10	442	0.32	2.29	0.34	208	31	0.12	R II	Lougheed Island
302H637720106300	Whitefish 2H-63	77.21	-106.89	2210 M	0.88	444	0.22	0.58	1.16	66	132	0.28	R II	Maclean Strait
302H637720106300	Whitefish 2H-63	77.21	-106.89	2299 M	1.29	444	0.32	1.93	0.46	150	36	0.14	R II	Barrow
302H637720106300	Whitefish 2H-63	77.21	-106.89	2315 M	0.72	440	0.16	0.81	0.47	113	65	0.16	R II	Barrow
302H637720106300	Whitefish 2H-63	77.21	-106.89	2324 M	0.61	440	0.11	0.29	0.31	48	51	0.28	R II	Barrow
302H637720106300	Whitefish 2H-63	77.21	-106.89	2330 M	0.86	439	0.20	1.12	0.49	130	57	0.15	R II	Barrow
302G167810101000	Jackson 2G-16	78.09	-101.11	4790 F	37.49	521	17.45	25.93	6.27	69	17	0.40	R II	Heiberg
302G167810101000	Jackson 2G-16	78.09	-101.11	5060 F	52.28	464	15.66	29.50	3.83	56	7	0.35	R II	Heiberg
302G167810101000	Jackson 2G-16	78.09	-101.11	5150 F	45.93	462	13.06	21.93	2.74	48	6	0.37	R II	Heiberg
302G167810101000	Jackson 2G-16	78.09	-101.11	5150 F	1.03	441	0.91	2.31	0.42	224	41	0.28	R II	Heiberg
300P467750097300	Linckens Island P-46	77.76	-97.76	3610 F	50.26	511	5.71	27.14	1.07	54	2	0.17	R II	Heiberg
300P467750097300	Linckens Island P-46	77.76	-97.76	5220 F	1.17	428	0.20	0.50	1.28	43	109	0.29	R II	Barrow
300P467750097300	Linckens Island P-46	77.76	-97.76	5500 F	0.94	435	0.25	0.64	0.97	68	103	0.28	R II	Barrow
300P467750097300	Linckens Island P-46	77.76	-97.76	5850 F	1.14	441	0.16	0.54	1.06	47	93	0.23	R II	Barrow
300P407630107000	Northeast Drake P-40	76.50	-107.20	3171 F	1.43	428	0.11	0.43	1.76	30	123	0.20	R II	King Christian
300O237750102000	Sutherland O-23	77.71	-102.14	1380 F	2.41	434	0.36	2.45	0.68	102	28	0.13	R II	Heiberg
300O237750102000	Sutherland O-23	77.71	-102.14	2822 F	0.38	460	0.11	0.07	0.61	18	161	0.61	R II	Barrow
300N527630110300	West Hecla N-52	76.36	-110.85	2732 F	0.30	436	0.05	0.11	0.51	37	170	0.31	R II	King Christian
300N277940084300	Fosheim N-27	79.62	-84.72	300 F	1.75	462	0.51	0.26	0.60	15	34	0.66	R II	Barrow
300N277940084300	Fosheim N-27	79.62	-84.72	420 F	1.56	315	0.80	0.12	0.23	8	15	0.87	R II	Barrow
300M407810101300	Elve M-40	78.17	-101.83	5580 F	58.40	449	14.23	163.26	6.92	280	12	0.08	R II	King Christian
300M407810101300	Elve M-40	78.17	-101.83	5730 F	65.79	446	20.19	216.86	9.21	330	14	0.09	R II	King Christian
300M407810101300	Elve M-40	78.17	-101.83	5830 F	2.61	436	0.43	5.08	0.56	195	21	0.08	R II	King Christian
300M117720105000	Skybattle Bay M-11	77.18	-105.11	1905 M	0.36	409	0.11	0.14	0.69	39	192	0.44	R II	Grosvenor Island
300M117720105000	Skybattle Bay M-11	77.18	-105.11	1911 M	0.29	446	0.08	0.06	0.66	21	228	0.57	R II	Grosvenor Island
300M117720105000	Skybattle Bay M-11	77.18	-105.11	1917 M	0.48	386	0.10	0.17	0.72	35	150	0.37	R II	Grosvenor Island
300M117720105000	Skybattle Bay M-11	77.18	-105.11	1923 M	0.47	344	0.12	0.14	0.61	30	130	0.46	R II	Grosvenor Island

LOCATION_ID	NAME	LAT	LONG	DEPTH	TOC	TMAX	S1	S2	S3	HI	OI	PI	EQUIP	UNIT
300M117720105000	Skybattle Bay M-11	77.18	-105.11	1929 M	0.49	327	0.12	0.15	0.55	31	112	0.44	R II	Grosvenor Island
300M117720105000	Skybattle Bay M-11	77.18	-105.11	1935 M	0.37	440	0.04	0.02	0.52	5	141	0.67	R II	Grosvenor Island
300M117720105000	Skybattle Bay M-11	77.18	-105.11	1935 M	0.57	374	0.13	0.14	0.64	25	112	0.48	R II	Grosvenor Island
300M117720105000	Skybattle Bay M-11	77.18	-105.11	1941 M	0.42	334	0.08	0.06	0.62	14	148	0.57	R II	Grosvenor Island
300M117720105000	Skybattle Bay M-11	77.18	-105.11	1947 M	0.74	407	0.20	0.24	0.79	32	107	0.45	R II	Grosvenor Island
300M117720105000	Skybattle Bay M-11	77.18	-105.11	1959 M	0.33	302	0.08	0.10	0.29	30	88	0.44	R II	Skybattle
300M117720105000	Skybattle Bay M-11	77.18	-105.11	1965 M	0.50	360	0.10	0.08	0.53	16	106	0.56	R II	Barrow
300M117720105000	Skybattle Bay M-11	77.18	-105.11	1971 M	0.61	363	0.16	0.16	0.77	26	126	0.50	R II	Barrow
300M117720105000	Skybattle Bay M-11	77.18	-105.11	1977 M	0.59	357	0.10	0.14	0.63	24	107	0.42	R II	Barrow
300M117720105000	Skybattle Bay M-11	77.18	-105.11	1983 M	0.63	422	0.11	0.20	0.76	32	121	0.35	R II	Barrow
300M117720105000	Skybattle Bay M-11	77.18	-105.11	1995 M	0.87	436	0.09	0.58	0.57	67	66	0.13	R II	Barrow
300M117720105000	Skybattle Bay M-11	77.18	-105.11	2001 M	1.03	438	0.11	0.87	0.67	84	65	0.11	R II	Barrow
300M117720105000	Skybattle Bay M-11	77.18	-105.11	2007 M	0.96	439	0.10	0.92	0.60	96	63	0.10	R II	Barrow
300M117720105000	Skybattle Bay M-11	77.18	-105.11	2013 M	0.92	440	0.06	0.65	0.59	71	64	0.08	R II	Barrow
300M117720105000	Skybattle Bay M-11	77.18	-105.11	2019 M	0.91	440	0.07	0.67	0.60	74	66	0.09	R II	Barrow
300M117720105000	Skybattle Bay M-11	77.18	-105.11	2025 M	0.90	443	0.03	0.76	0.43	84	48	0.04	R II	Barrow
300M117720105000	Skybattle Bay M-11	77.18	-105.11	2025 M	1.08	438	0.11	0.75	0.74	69	69	0.13	R II	Barrow
300M117720105000	Skybattle Bay M-11	77.18	-105.11	2031 M	1.04	438	0.09	0.73	0.69	70	66	0.11	R II	Barrow
300M117720105000	Skybattle Bay M-11	77.18	-105.11	2037 M	1.67	437	0.15	2.01	0.59	120	35	0.07	R II	Barrow
300M117720105000	Skybattle Bay M-11	77.18	-105.11	2043 M	1.11	439	0.10	0.89	0.57	80	51	0.10	R II	Barrow
300L467630115000	Sandy Point L-46	76.43	-115.30	2527 F	2.10	436	0.24	8.86	0.57	422	27	0.03	R II	Barrow
300L467630115000	Sandy Point L-46	76.43	-115.30	2544 F	1.77	431	0.18	1.66	0.40	94	23	0.10	R II	Barrow
300L467630115000	Sandy Point L-46	76.43	-115.30	2548 F	1.15	431	0.15	0.19	1.20	17	104	0.44	R II	Barrow
300L327720118000	Andreasen L-32	77.19	-118.24	1955 F	0.49	429	0.08	0.28	0.22	57	45	0.22	R II	King Christian
300K797630108300	Drake Point K-79	76.48	-108.98	4680 F	0.37	429	0.11	0.15	0.56	41	151	0.42	R II	Barrow
300K627800102000	Wallis K-62	77.86	-102.42	6970 F	1.71	438	0.55	3.11	0.56	182	33	0.15	R II	Maclean Strait
300K627800102000	Wallis K-62	77.86	-102.42	7700 F	0.49	438	0.09	0.39	0.48	80	98	0.19	R II	Grosvenor Island
300K627800102000	Wallis K-62	77.86	-102.42	8120 F	1.64	435	0.50	1.57	0.67	96	41	0.24	R II	Skybattle
300K627800102000	Wallis K-62	77.86	-102.42	8420 F	0.33	454	0.13	0.22	0.28	67	85	0.37	R II	Barrow
300K627800102000	Wallis K-62	77.86	-102.42	8421 F	1.55	441	0.21	1.43	0.75	92	48	0.13	R II	Barrow
300K627800102000	Wallis K-62	77.86	-102.42	8600 F	3.28	439	0.07	2.14	1.15	65	35	0.03	R II	Barrow
300K337640108300	Collingwood K-33	76.55	-108.72	5380 F	0.64	0	0.00	0.01	0.42	2	66	0.00	R II	Barrow
300K337640108300	Collingwood K-33	76.55	-108.72	5420 F	0.66	431	0.12	0.27	1.38	41	209	0.31	R II	Barrow
300K337640108300	Collingwood K-33	76.55	-108.72	5420 F	0.65	430	0.12	0.23	1.10	35	169	0.34	R II	Barrow
300K337640108300	Collingwood K-33	76.55	-108.72	5430 F	0.95	0	0.01	0.00	0.36	0	38	1.00	R II	Barrow
300K337640108300	Collingwood K-33	76.55	-108.72	5500 F	0.37	0	0.01	0.00	0.26	0	70	1.00	R II	Barrow
300K337640108300	Collingwood K-33	76.55	-108.72	5530 F	0.44	439	0.06	0.17	0.45	39	102	0.26	R II	Barrow
300K287920103300	Sirius K-28	79.29	-103.73	2934 F	1.74	453	0.39	1.35	0.44	78	25	0.22	R II	King Christian
300K287920103300	Sirius K-28	79.29	-103.73	4702 F	1.70	439	0.30	1.65	3.00	97	176	0.15	R II	Grosvenor Island
300K287920103300	Sirius K-28	79.29	-103.73	4740 F	1.71	438	0.04	0.35	0.82	20	48	0.10	R II	Grosvenor Island
300K287920103300	Sirius K-28	79.29	-103.73	5181 F	65.91	441	9.53	158.46	5.38	240	8	0.06	R II	Skybattle
300K287920103300	Sirius K-28	79.29	-103.73	5180 F	5.73	442	1.19	12.01	0.61	210	11	0.09	R II	Skybattle
300K287920103300	Sirius K-28	79.29	-103.73	5500 F	1.08	441	0.16	0.53	0.82	49	76	0.23	R II	Skybattle
300K287920103300	Sirius K-28	79.29	-103.73	5650 F	0.92	441	0.19	0.40	0.89	43	97	0.32	R II	Skybattle
300K287920103300	Sirius K-28	79.29	-103.73	5860 F	57.40	452	13.93	140.65	2.45	245	4	0.09	R II	Skybattle
300K287920103300	Sirius K-28	79.29	-103.73	6160 F	0.97	445	0.33	0.51	0.95	53	98	0.39	R II	Skybattle
300K287920103300	Sirius K-28	79.29	-103.73	6300 F	0.69	411	0.22	0.13	0.17	19	25	0.63	R II	Skybattle
300K287920103300	Sirius K-28	79.29	-103.73	6570 F	1.65	525	0.52	0.68	1.55	41	94	0.43	R II	Skybattle
300K287920103300	Sirius K-28	79.29	-103.73	7550 F	1.11	492	0.21	0.49	0.89	44	80	0.30	R II	Barrow
300K287920103300	Sirius K-28	79.29	-103.73	8000 F	0.98	379	0.48	0.28	0.31	29	32	0.63	R II	Barrow

LOCATION_ID	NAME	LAT	LONG	DEPTH	TOC	TMAX	S1	S2	S3	HI	OI	PI	EQUIP	UNIT
300K287920103300	Sirius K-28	79.29	-103.73	8300 F	0.84	449	0.40	0.42	0.29	50	35	0.49	R II	Barrow
300K087810104300	Sculpin K-08	78.13	-104.56	1530 M	3.21	440	0.61	4.66	1.50	145	47	0.12	R II	Lougheed Island
300K087810104300	Sculpin K-08	78.13	-104.56	1650 M	2.37	438	0.56	3.02	1.51	127	64	0.16	R II	Lougheed Island
300K087810104300	Sculpin K-08	78.13	-104.56	1776 M	0.07	438	0.15	0.81	0.41	1157	586	0.16	R II	Lougheed Island
300K087810104300	Sculpin K-08	78.13	-104.56	1776 M	0.67	440	0.10	0.42	0.38	63	57	0.19	R II	Lougheed Island
300J517640117000	Wilkie Point J-51	76.51	-117.33	1020 F	0.58	424	0.18	0.70	0.33	121	57	0.20	R II	King Christian
300J437650109300	Roche Point O-43	76.71	-109.77	7710 F	0.38	0	0.02	0.00	0.01	0	3	1.00	R II	Maclean Strait
300J437650109300	Roche Point O-43	76.71	-109.77	7920 F	0.56	0	0.01	0.01	0.23	2	41	0.50	R II	Barrow
300J437650109300	Roche Point O-43	76.71	-109.77	8000 F	0.58	442	0.03	0.27	0.64	47	110	0.10	R II	Barrow
300J437650109300	Roche Point O-43	76.71	-109.77	8050 F	0.45	318	0.03	0.05	0.07	11	16	0.38	R II	Barrow
300I727740103300	Maclean I-72	77.53	-103.94	1590 M	0.71	430	0.09	0.79	1.76	111	248	0.10	R II	King Christian
300I727740103300	Maclean I-72	77.53	-103.94	1599 M	0.45	433	0.05	0.33	1.90	73	422	0.13	R II	Lougheed Island
300I727740103300	Maclean I-72	77.53	-103.94	1608 M	0.47	431	0.06	0.44	2.38	94	506	0.12	R II	Lougheed Island
300I727740103300	Maclean I-72	77.53	-103.94	1617 M	0.38	433	0.06	0.40	1.94	105	511	0.13	R II	Lougheed Island
300I727740103300	Maclean I-72	77.53	-103.94	1626 M	0.43	431	0.04	0.32	1.96	74	456	0.11	R II	Lougheed Island
300I727740103300	Maclean I-72	77.53	-103.94	1635 M	0.33	437	0.02	0.26	2.11	79	639	0.07	R II	Lougheed Island
300I727740103300	Maclean I-72	77.53	-103.94	1644 M	0.34	420	0.08	0.54	2.50	159	735	0.13	R II	Lougheed Island
300I727740103300	Maclean I-72	77.53	-103.94	1701 M	0.27	427	0.00	0.03	1.17	11	433	0.00	R II	Grosvenor Island
300I727740103300	Maclean I-72	77.53	-103.94	1716 M	0.31	339	0.01	0.07	1.01	23	326	0.13	R II	Grosvenor Island
300I727740103300	Maclean I-72	77.53	-103.94	1731 M	0.75	442	0.02	0.25	1.42	33	189	0.07	R II	Grosvenor Island
300I727740103300	Maclean I-72	77.53	-103.94	1746 M	0.34	364	0.01	0.10	0.48	29	141	0.09	R II	Grosvenor Island
300I727740103300	Maclean I-72	77.53	-103.94	1761 M	0.39	357	0.01	0.09	0.43	23	110	0.10	R II	Skybattle
300I727740103300	Maclean I-72	77.53	-103.94	1776 M	0.83	445	0.08	0.39	0.64	47	77	0.17	R II	Skybattle
300I727740103300	Maclean I-72	77.53	-103.94	1791 M	0.69	441	0.06	0.31	0.64	45	93	0.16	R II	Skybattle
300I727740103300	Maclean I-72	77.53	-103.94	1806 M	0.71	444	0.06	0.32	0.62	45	87	0.16	R II	Skybattle
300I727740103300	Maclean I-72	77.53	-103.94	1821 M	0.69	440	0.08	0.34	0.58	49	84	0.19	R II	Skybattle
300I727740103300	Maclean I-72	77.53	-103.94	1836 M	0.72	439	0.07	0.33	0.59	46	82	0.18	R II	Skybattle
300I727740103300	Maclean I-72	77.53	-103.94	1851 M	0.56	438	0.06	0.35	0.78	63	139	0.15	R II	Barrow
300I727740103300	Maclean I-72	77.53	-103.94	1866 M	0.44	437	0.05	0.21	0.84	48	191	0.19	R II	Barrow
300I727740103300	Maclean I-72	77.53	-103.94	1881 M	0.46	441	0.04	0.15	0.34	33	74	0.21	R II	Barrow
300I727740103300	Maclean I-72	77.53	-103.94	1896 M	0.58	436	0.04	0.21	0.50	36	86	0.16	R II	Barrow
300I727740103300	Maclean I-72	77.53	-103.94	1911 M	0.74	439	0.05	0.27	0.86	36	116	0.16	R II	Barrow
300I727740103300	Maclean I-72	77.53	-103.94	1926 M	0.81	438	0.05	0.30	0.66	37	81	0.14	R II	Barrow
300I727740103300	Maclean I-72	77.53	-103.94	1956 M	0.81	438	0.05	0.33	0.47	41	58	0.13	R II	Barrow
300I727740103300	Maclean I-72	77.53	-103.94	1971 M	0.83	437	0.03	0.35	0.50	42	60	0.08	R II	Barrow
300I727740103300	Maclean I-72	77.53	-103.94	1986 M	0.81	440	0.03	0.33	0.39	41	48	0.08	R II	Barrow
300I727740103300	Maclean I-72	77.53	-103.94	2001 M	0.88	438	0.05	0.47	0.40	53	45	0.10	R II	Barrow
300I727740103300	Maclean I-72	77.53	-103.94	2016 M	0.93	438	0.06	0.54	0.49	58	53	0.10	R II	Barrow
300I727740103300	Maclean I-72	77.53	-103.94	2031 M	0.95	441	0.08	0.65	0.38	68	40	0.11	R II	Barrow
300I727740103300	Maclean I-72	77.53	-103.94	2046 M	0.86	438	0.05	0.52	0.37	60	43	0.09	R II	Barrow
300I727740103300	Maclean I-72	77.53	-103.94	2061 M	0.97	442	0.07	0.64	0.37	66	38	0.10	R II	Barrow
300I727740103300	Maclean I-72	77.53	-103.94	2076 M	0.93	441	0.07	0.89	0.20	96	22	0.07	R II	Barrow
300I727740103300	Maclean I-72	77.53	-103.94	2091 M	0.94	438	0.05	0.70	0.30	74	32	0.07	R II	Barrow
300I727740103300	Maclean I-72	77.53	-103.94	2106 M	0.96	440	0.07	0.84	0.40	88	42	0.08	R II	Barrow
300I727740103300	Maclean I-72	77.53	-103.94	2121 M	0.97	442	0.07	0.79	0.36	81	37	0.08	R II	Barrow
300I727740103300	Maclean I-72	77.53	-103.94	2136 M	1.04	442	0.07	0.98	0.40	94	38	0.07	R II	Barrow
300I347630113000	Grassy I-34	76.40	-113.19	2820 F	8.52	424	0.89	46.01	1.84	540	22	0.02	R II	Barrow
300I347630113000	Grassy I-34	76.40	-113.19	2930 F	7.98	425	1.20	43.54	1.89	546	24	0.03	R II	Barrow
300H497700118300	Intrepid Inlet H-49	76.97	-118.75	1790 F	0.65	420	0.05	0.52	0.91	80	140	0.08	R 6	King Christian
300H497700118300	Intrepid Inlet H-49	76.97	-118.75	2030 F	1.01	311	0.21	1.42	2.50	141	248	0.13	R 6	King Christian

LOCATION_ID	NAME	LAT	LONG	DEPTH	TOC	TMAX	S1	S2	S3	HI	OI	PI	EQUIP	UNIT
300H497700118300	Intrepid Inlet H-49	76.97	-118.75	2380 F	3.19	427	0.13	13.75	0.84	431	26	0.01	R II	Barrow
300H497700118300	Intrepid Inlet H-49	76.97	-118.75	2500 F	0.01	0	0.00	0.01	0.17	100	1700	0.00	R II	Barrow
300H497650108300	North Sabine H-49	76.80	-108.75	10020 F	0.66	443	0.09	0.96	0.01	145	2	0.09	R II	Lougheed Island
300H497650108300	North Sabine H-49	76.80	-108.75	10250 F	0.45	444	0.11	0.64	0.01	142	2	0.15	R II	Barrow
300H497650108300	North Sabine H-49	76.80	-108.75	10400 F	0.65	443	0.13	0.99	0.01	152	2	0.12	R II	Barrow
300G607910104300	Pollux G-60	79.16	-104.96	2400 F	1.51	434	0.43	3.13	0.65	207	43	0.12	R II	Barrow
300G607910104300	Pollux G-60	79.16	-104.96	2595 F	1.08	439	0.15	1.84	0.31	170	29	0.08	R II	Barrow
300G607910104300	Pollux G-60	79.16	-104.96	2790 F	1.13	436	0.61	1.76	0.75	156	66	0.26	R II	Barrow
300G077740099300	Char G-07	77.61	-99.52	1670 M	1.52	429	0.03	0.80	1.03	53	68	0.03	R 6	Heiberg
300G077740099300	Char G-07	77.61	-99.52	1700 M	1.81	430	0.02	1.09	0.88	60	49	0.02	R 6	Heiberg
300G077740099300	Char G-07	77.61	-99.52	1730 M	1.77	433	0.07	1.25	1.34	71	76	0.06	R 6	Heiberg
300G077740099300	Char G-07	77.61	-99.52	1790 M	4.35	432	0.06	2.28	1.89	52	43	0.03	R 6	Heiberg
300G077740099300	Char G-07	77.61	-99.52	1820 M	2.99	431	0.08	1.53	1.47	51	49	0.05	R 6	Heiberg
300F687720116300	Satellite F-68	77.29	-116.92	1850 F	0.91	434	0.13	1.08	0.38	119	42	0.11	R II	Grosvenor Island
300F687720116300	Satellite F-68	77.29	-116.92	2094 F	0.55	432	0.06	0.47	0.32	85	58	0.11	R II	Barrow
300F687720116300	Satellite F-68	77.29	-116.92	2250 F	1.41	435	0.37	4.78	0.38	339	27	0.07	R II	Barrow
300F627630110000	East Hecla F-62	76.35	-110.41	3290 F	1.80	433	0.30	5.18	0.46	288	26	0.05	R II	Barrow
300F547710110000	Hazen F-54	77.05	-110.35	1336 M	1.13	445	0.35	1.44	0.07	127	6	0.20	R II	Lougheed Island
300F547710110000	Hazen F-54	77.05	-110.35	1406 M	0.54	446	0.18	0.66	0.08	122	15	0.21	R II	Barrow
300F547710110000	Hazen F-54	77.05	-110.35	1445 M	0.79	446	0.27	1.05	0.13	133	16	0.20	R II	Barrow
300F247740109000	Cape Mamen F-24	77.55	-109.17	1848 M	1.41	443	0.23	2.07	0.29	147	21	0.10	R II	Lougheed Island
300F247740109000	Cape Mamen F-24	77.55	-109.17	1950 M	0.41	445	0.10	0.29	0.41	71	100	0.26	R II	Barrow
300F247740109000	Cape Mamen F-24	77.55	-109.17	2034 M	0.71	445	0.13	0.47	0.40	66	56	0.22	R II	Barrow
300F167630108300	Drake F-16	76.42	-108.59	3772 F	0.38	435	0.09	0.08	0.69	21	182	0.53	R II	Barrow
300F147620108300	Sherard Bay F-14	76.22	-108.60	3901 F	0.45	436	0.04	0.22	0.59	49	131	0.15	R II	Grosvenor Island
300E787630108000	Drake E-78	76.46	-108.49	3700 F	0.82	432	0.46	1.65	1.54	201	188	0.22	R II	King Christian
300E787630108000	Drake E-78	76.46	-108.49	3850 F	0.63	432	0.37	1.58	0.47	251	75	0.19	R II	Barrow
300E607800111000	Wilkins E-60	77.99	-111.36	2350 F	1.61	433	0.37	5.44	0.38	338	24	0.06	R II	King Christian
300D737630108000	Drake D-73	76.37	-108.49	4057 F	0.30	437	0.04	0.14	0.77	47	257	0.22	R II	Lougheed Island
300D687630108300	Drake Point D-68	76.45	-108.93	3850 F	0.54	433	0.01	0.10	1.78	19	330	0.09	R 6	Barrow
300D687630108300	Drake Point D-68	76.45	-108.93	3950 F	0.36	441	0.01	0.09	1.14	25	317	0.07	R 6	Barrow
300D687630108300	Drake Point D-68	76.45	-108.93	3950 F	0.39	0	0.00	0.01	0.30	3	77	0.00	R II	Barrow
300D587740100000	Balaena D-58	77.62	-100.37	1460 M	1.00	426	0.14	0.52	2.62	52	262	0.21	R 6	Heiberg
300D587740100000	Balaena D-58	77.62	-100.37	1480 M	1.95	463	0.54	2.19	1.74	112	89	0.20	R 6	Heiberg
300D587740100000	Balaena D-58	77.62	-100.37	1500 M	2.06	425	0.69	1.68	1.46	82	71	0.29	R 6	Heiberg
300D587740100000	Balaena D-58	77.62	-100.37	1520 M	2.29	423	0.69	2.77	4.25	121	186	0.20	R 6	Heiberg
300D587740100000	Balaena D-58	77.62	-100.37	1540 M	1.75	425	0.55	2.98	2.11	170	121	0.16	R 6	Heiberg
300D587740100000	Balaena D-58	77.62	-100.37	1560 M	1.27	428	0.41	1.46	1.39	115	109	0.22	R 6	Heiberg
300D587740100000	Balaena D-58	77.62	-100.37	1580 M	2.39	428	0.71	2.74	1.56	115	65	0.21	R 6	Heiberg
300D587740100000	Balaena D-58	77.62	-100.37	1600 M	2.23	433	0.54	2.35	1.49	105	67	0.19	R 6	Heiberg
300D417830104000	Noice D-41	78.33	-104.40	1854 M	1.89	442	0.45	3.28	0.36	174	19	0.12	R II	Lougheed Island
300D417830104000	Noice D-41	78.33	-104.40	2148 M	0.53	446	0.18	0.49	0.35	92	66	0.27	R II	Grosvenor Island
300D417830104000	Noice D-41	78.33	-104.40	2299 M	0.75	444	0.21	0.57	0.33	76	44	0.27	R II	Skybattle
300D237830104300	Mocklin Point D-23	78.37	-104.75	5700 F	0.57	439	0.15	0.56	0.10	98	18	0.21	R II	Lougheed Island
300D237830104300	Mocklin Point D-23	78.37	-104.75	6000 F	1.29	443	0.43	2.20	0.16	171	12	0.16	R II	Lougheed Island
300D237830104300	Mocklin Point D-23	78.37	-104.75	6650 F	1.00	453	0.10	0.35	0.19	35	19	0.22	R II	Grosvenor Island
300D237830104300	Mocklin Point D-23	78.37	-104.75	7100 F	0.36	507	0.03	0.05	0.50	14	139	0.38	R II	Barrow
300D237830104300	Mocklin Point D-23	78.37	-104.75	7250 F	0.89	500	0.10	0.21	0.22	24	25	0.32	R II	Barrow
300D237830104300	Mocklin Point D-23	78.37	-104.75	7350 F	0.76	403	0.14	0.07	0.30	9	39	0.67	R II	Barrow
300D237830104300	Mocklin Point D-23	78.37	-104.75	8050 F	0.76	460	0.18	0.25	0.26	33	34	0.42	R II	Barrow

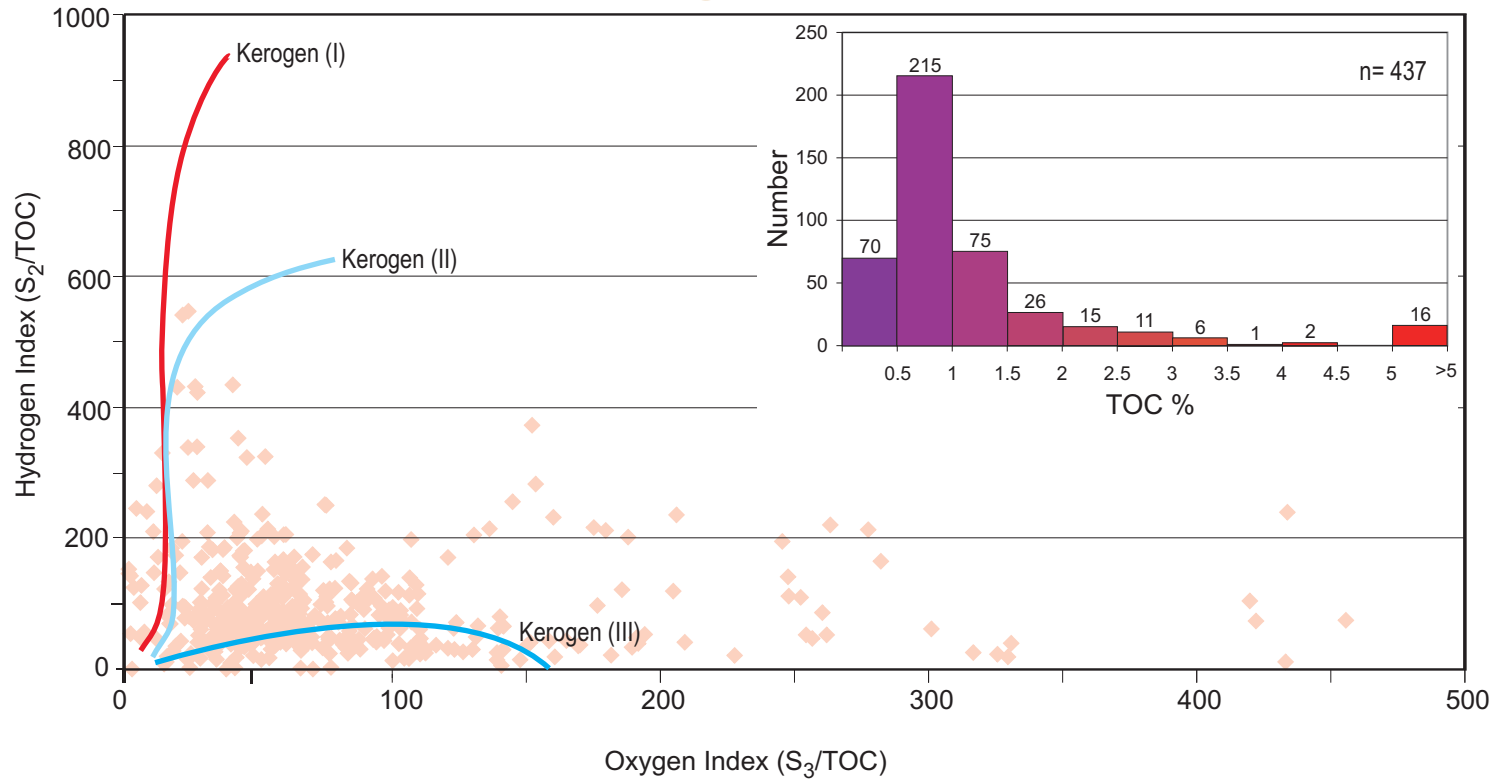
LOCATION_ID	NAME	LAT	LONG	DEPTH	TOC	TMAX	S1	S2	S3	HI	OI	PI	EQUIP	UNIT
300D237830104300	Mocklin Point D-23	78.37	-104.75	8350 F	0.81	468	0.17	0.33	0.22	41	27	0.34	R II	Barrow
300D237830104300	Mocklin Point D-23	78.37	-104.75	8900 F	0.83	498	0.15	0.23	0.15	28	18	0.39	R II	Barrow
300C597750104300	Skate C-59	77.80	-104.86	1170 M	0.79	439	0.33	1.10	0.84	139	106	0.23	R II	Lougheed Island
300C597750104300	Skate C-59	77.80	-104.86	1212 M	1.47	435	0.77	2.02	1.36	137	93	0.28	R II	Lougheed Island
300C597750104300	Skate C-59	77.80	-104.86	1350 M	0.93	441	0.14	0.82	0.55	88	59	0.15	R II	Skybattle
300C597750104300	Skate C-59	77.80	-104.86	1356 M	1.79	440	0.88	2.11	1.05	118	59	0.29	R II	Skybattle
300C597750104300	Skate C-59	77.80	-104.86	1362 M	0.96	441	0.13	0.85	0.49	89	51	0.13	R II	Skybattle
300C597750104300	Skate C-59	77.80	-104.86	1374 M	0.94	439	0.27	0.81	0.58	86	62	0.25	R II	Skybattle
300C597750104300	Skate C-59	77.80	-104.86	1380 M	0.89	440	0.18	0.74	0.75	83	84	0.20	R II	Skybattle
300C597750104300	Skate C-59	77.80	-104.86	1386 M	1.09	440	0.36	1.12	0.93	103	85	0.24	R II	Skybattle
300C597750104300	Skate C-59	77.80	-104.86	1392 M	0.96	439	0.26	0.88	0.47	92	49	0.23	R II	Skybattle
300C597750104300	Skate C-59	77.80	-104.86	1398 M	0.71	440	0.14	0.70	0.52	99	73	0.17	R II	Skybattle
300C597750104300	Skate C-59	77.80	-104.86	1404 M	0.72	438	0.23	0.88	0.55	122	76	0.21	R II	Skybattle
300C597750104300	Skate C-59	77.80	-104.86	1410 M	0.65	440	0.18	0.65	0.42	100	65	0.22	R II	Skybattle
300C597750104300	Skate C-59	77.80	-104.86	1428 M	0.25	437	0.05	0.26	1.05	104	420	0.16	R II	Barrow
300C597750104300	Skate C-59	77.80	-104.86	1434 M	0.46	441	0.05	0.24	1.17	52	254	0.17	R II	Barrow
300C597750104300	Skate C-59	77.80	-104.86	1440 M	0.75	438	0.08	0.49	1.06	65	141	0.14	R II	Barrow
300C597750104300	Skate C-59	77.80	-104.86	1446 M	0.51	446	0.06	0.27	0.99	53	194	0.18	R II	Barrow
300C597750104300	Skate C-59	77.80	-104.86	1452 M	0.84	439	0.12	0.36	1.33	43	158	0.25	R II	Barrow
300C597750104300	Skate C-59	77.80	-104.86	1458 M	1.01	442	0.12	0.50	0.95	50	94	0.19	R II	Barrow
300C597750104300	Skate C-59	77.80	-104.86	1464 M	0.96	442	0.11	0.47	0.67	49	70	0.19	R II	Barrow
300C597750104300	Skate C-59	77.80	-104.86	1470 M	1.41	442	0.14	0.88	0.76	62	54	0.14	R II	Barrow
300C597750104300	Skate C-59	77.80	-104.86	1476 M	1.15	443	0.13	0.71	1.03	62	90	0.15	R II	Barrow
300C597750104300	Skate C-59	77.80	-104.86	1482 M	1.02	443	0.08	0.48	0.54	47	53	0.14	R II	Barrow
300C597750104300	Skate C-59	77.80	-104.86	1488 M	0.99	442	0.08	0.52	0.60	53	61	0.13	R II	Barrow
300C597750104300	Skate C-59	77.80	-104.86	1494 M	0.95	443	0.07	0.48	0.45	51	47	0.13	R II	Barrow
300C597750104300	Skate C-59	77.80	-104.86	1500 M	0.93	442	0.10	0.54	0.78	58	84	0.16	R II	Barrow
300C597750104300	Skate C-59	77.80	-104.86	1506 M	0.94	442	0.11	0.60	0.47	64	50	0.15	R II	Barrow
300C597750104300	Skate C-59	77.80	-104.86	1512 M	1.17	444	0.21	1.52	0.51	130	44	0.12	R II	Barrow
300C597750104300	Skate C-59	77.80	-104.86	1518 M	1.04	443	0.17	1.31	0.44	126	42	0.11	R II	Barrow
300C597750104300	Skate C-59	77.80	-104.86	1524 M	0.88	443	0.14	0.87	0.43	99	49	0.14	R II	Barrow
300C597750104300	Skate C-59	77.80	-104.86	1530 M	0.74	443	0.11	0.53	0.59	72	80	0.17	R II	Barrow
300C597750104300	Skate C-59	77.80	-104.86	1536 M	0.79	442	0.11	0.65	0.75	82	95	0.14	R II	Barrow
300C597750104300	Skate C-59	77.80	-104.86	1542 M	0.76	443	0.10	0.54	0.94	71	124	0.16	R II	Barrow
300C597750104300	Skate C-59	77.80	-104.86	1548 M	0.72	444	0.08	0.45	0.74	63	103	0.15	R II	Barrow
300C597750104300	Skate C-59	77.80	-104.86	1554 M	0.66	443	0.07	0.41	0.81	62	123	0.15	R II	Barrow
300C597750104300	Skate C-59	77.80	-104.86	1560 M	0.70	442	0.09	0.44	0.69	63	99	0.17	R II	Barrow
300C597750104300	Skate C-59	77.80	-104.86	1566 M	0.57	443	0.07	0.41	0.61	72	107	0.15	R II	Barrow
300C597750104300	Skate C-59	77.80	-104.86	1572 M	0.56	446	0.10	0.41	0.41	73	73	0.20	R II	Barrow
300C597750104300	Skate C-59	77.80	-104.86	1608 M	0.50	448	0.09	0.32	0.34	64	68	0.22	R II	Barrow
300C597750104300	Skate C-59	77.80	-104.86	1611 M	0.49	447	0.09	0.33	0.32	67	65	0.21	R II	Barrow
300C597750104300	Skate C-59	77.80	-104.86	1614 M	0.48	445	0.07	0.26	0.31	54	65	0.21	R II	Barrow
300C597750104300	Skate C-59	77.80	-104.86	1617 M	0.48	448	0.07	0.24	0.33	50	69	0.23	R II	Barrow
300C597750104300	Skate C-59	77.80	-104.86	1620 M	0.44	447	0.07	0.22	0.26	50	59	0.24	R II	Barrow
300C597750104300	Skate C-59	77.80	-104.86	1623 M	0.46	443	0.07	0.21	0.35	46	76	0.25	R II	Barrow
300C597750104300	Skate C-59	77.80	-104.86	1626 M	0.44	447	0.08	0.21	0.29	48	66	0.28	R II	Barrow
300C597750104300	Skate C-59	77.80	-104.86	1629 M	0.39	453	0.07	0.15	0.25	38	64	0.32	R II	Barrow
300C597750104300	Skate C-59	77.80	-104.86	1632 M	0.43	442	0.08	0.21	0.24	49	56	0.28	R II	Barrow
300C597750104300	Skate C-59	77.80	-104.86	1635 M	0.43	448	0.05	0.17	0.37	40	86	0.23	R II	Barrow
300C597750104300	Skate C-59	77.80	-104.86	1641 M	0.40	449	0.07	0.16	0.28	40	70	0.30	R II	Barrow

LOCATION_ID	NAME	LAT	LONG	DEPTH	TOC	TMAX	S1	S2	S3	HI	OI	PI	EQUIP	UNIT
300C597750104300	Skate C-59	77.80	-104.86	1644 M	0.45	450	0.10	0.21	0.27	47	60	0.32	R II	Barrow
300C597750104300	Skate C-59	77.80	-104.86	1647 M	0.52	448	0.07	0.32	0.28	62	54	0.18	R II	Barrow
300C597750104300	Skate C-59	77.80	-104.86	1650 M	0.76	448	0.09	0.41	0.32	54	42	0.18	R II	Barrow
300C597750104300	Skate C-59	77.80	-104.86	1653 M	0.67	449	0.11	0.41	0.43	61	64	0.21	R II	Barrow
300C597750104300	Skate C-59	77.80	-104.86	1656 M	0.82	448	0.13	0.49	0.34	60	41	0.21	R II	Barrow
300C597750104300	Skate C-59	77.80	-104.86	1659 M	0.85	448	0.14	0.61	0.40	72	47	0.19	R II	Barrow
300C597750104300	Skate C-59	77.80	-104.86	1662 M	0.91	445	0.19	0.81	0.59	89	65	0.19	R II	Barrow
300C597750104300	Skate C-59	77.80	-104.86	1665 M	1.04	445	0.28	1.17	0.38	113	37	0.19	R II	Barrow
300C597750104300	Skate C-59	77.80	-104.86	1668 M	1.16	444	0.23	1.41	0.48	122	41	0.14	R II	Barrow
300C597750104300	Skate C-59	77.80	-104.86	1671 M	1.42	443	0.36	2.20	0.63	155	44	0.14	R II	Barrow
300C597750104300	Skate C-59	77.80	-104.86	1674 M	1.29	447	0.34	2.39	0.48	185	37	0.12	R II	Barrow
300C597750104300	Skate C-59	77.80	-104.86	1677 M	1.43	445	0.39	2.86	0.60	200	42	0.12	R II	Barrow
300C527730090300	Graham C-52	77.35	-90.86	4740 F	64.73	475	12.77	80.37	2.22	124	3	0.14	R II	Heiberg
300C527730090300	Graham C-52	77.35	-90.86	5050 F	0.58	380	0.31	0.37	0.35	64	60	0.46	R II	Barrow
300C527730090300	Graham C-52	77.35	-90.86	5253 F	1.48	492	0.15	0.03	0.36	2	24	0.83	R II	Barrow
300C447630114000	Depot Island C-44	76.39	-114.30	2081 F	0.35	412	0.17	0.10	0.23	29	66	0.63	R II	Maclean Strait
300C447630114000	Depot Island C-44	76.39	-114.30	648 M	1.83	438	0.05	1.75	0.90	96	49	0.03	R II	Grosvenor Island
300C317650116300	Jameson Bay C-31	76.67	-116.73	3110 F	0.53	431	0.11	0.50	0.28	94	53	0.18	R II	Grosvenor Island
300C317650116300	Jameson Bay C-31	76.67	-116.73	3380 F	1.13	436	0.19	1.27	0.49	112	43	0.13	R II	Barrow
300C157720105001	Skybattle Bay C-15	77.24	-105.10	6650 F	1.04	443	0.03	0.15	0.53	14	51	0.17	R II	Lougheed Island
300C157720105001	Skybattle Bay C-15	77.24	-105.10	6700 F	0.71	432	0.09	0.44	0.36	62	51	0.17	R II	Lougheed Island
300C157720105001	Skybattle Bay C-15	77.24	-105.10	6701 F	0.89	437	0.19	0.89	0.36	100	40	0.18	R II	Lougheed Island
300C157720105001	Skybattle Bay C-15	77.24	-105.10	6790 F	0.76	452	0.03	0.13	0.41	17	54	0.19	R II	Maclean Strait
300C157720105001	Skybattle Bay C-15	77.24	-105.10	7180 F	0.39	0	0.01	0.05	0.39	13	100	0.17	R II	Barrow
300C157720105001	Skybattle Bay C-15	77.24	-105.10	7320 F	0.54	434	0.03	0.13	0.45	24	83	0.19	R II	Barrow
300C157720105001	Skybattle Bay C-15	77.24	-105.10	7410 F	0.65	435	0.00	0.22	0.29	34	45	0.00	R II	Barrow
300C157720105001	Skybattle Bay C-15	77.24	-105.10	7560 F	0.81	435	0.00	0.30	0.38	37	47	0.00	R II	Barrow
300C157720105000	SKYBATTLE BAY C-15	77.24	-105.10	6350 F	0.76	435	0.07	0.62	0.12	82	16	0.10	R II	King Christian
300C157720105000	Skybattle Bay C-15	77.24	-105.10	6630 F	0.51	438	0.09	0.45	0.18	88	35	0.17	R II	Lougheed Island
300C157720105000	Skybattle Bay C-15	77.24	-105.10	6690 F	0.59	437	0.08	0.64	0.20	108	34	0.11	R II	Lougheed Island
300C157720105000	Skybattle Bay C-15	77.24	-105.10	6690 F	0.49	435	0.07	0.42	0.24	86	49	0.14	R II	Lougheed Island
300C157720105000	Skybattle Bay C-15	77.24	-105.10	7200 F	0.40	429	0.06	0.13	0.33	33	83	0.32	R II	Barrow
300C157720105000	Skybattle Bay C-15	77.24	-105.10	7200 F	0.43	441	0.09	0.23	0.17	53	40	0.28	R II	Barrow
300C157720105000	Skybattle Bay C-15	77.24	-105.10	7250 F	0.34	443	0.03	0.08	0.26	24	76	0.27	R II	Barrow
300C157720105000	Skybattle Bay C-15	77.24	-105.10	7300 F	0.58	435	0.07	0.30	0.25	52	43	0.19	R II	Barrow
300C157720105000	Skybattle Bay C-15	77.24	-105.10	7350 F	0.60	439	0.04	0.20	0.19	33	32	0.17	R II	Barrow
300C157720105000	Skybattle Bay C-15	77.24	-105.10	7350 F	0.54	438	0.04	0.18	0.36	33	67	0.18	R II	Barrow
300C157720105000	Skybattle Bay C-15	77.24	-105.10	7400 F	0.67	439	0.08	0.52	0.15	78	22	0.13	R II	Barrow
300C157720105000	Skybattle Bay C-15	77.24	-105.10	7450 F	0.63	434	0.09	0.45	0.38	71	60	0.17	R II	Barrow
300C157720105000	Skybattle Bay C-15	77.24	-105.10	7500 F	0.72	435	0.09	0.60	0.30	83	42	0.13	R II	Barrow
300C157720105000	Skybattle Bay C-15	77.24	-105.10	7550 F	0.88	441	0.11	0.71	0.21	81	24	0.13	R II	Barrow
300C157720105000	Skybattle Bay C-15	77.24	-105.10	7550 F	0.68	433	0.14	0.56	0.70	82	103	0.20	R II	Barrow
300C057630110300	West Hecla C-05	76.40	-110.53	3637 F	0.36	438	0.06	0.09	0.50	25	139	0.40	R II	Lougheed Island
300C057630110300	West Hecla C-05	76.40	-110.53	3790 F	1.11	434	0.13	1.32	1.08	119	97	0.09	R II	Barrow
300B807750104300	Skate B-80	77.82	-104.96	1002 M	2.88	334	4.47	5.91	1.73	205	60	0.43	R II	Lougheed Island
300B807750104300	Skate B-80	77.82	-104.96	1008 M	4.18	335	6.58	8.27	2.07	198	50	0.44	R II	Lougheed Island
300B807750104300	Skate B-80	77.82	-104.96	1014 M	2.84	330	2.85	4.45	1.66	157	58	0.39	R II	Lougheed Island
300B807750104300	Skate B-80	77.82	-104.96	1020 M	3.37	337	4.75	6.90	2.00	205	59	0.41	R II	Lougheed Island
300B807750104300	Skate B-80	77.82	-104.96	1026 M	2.83	330	3.38	4.84	1.79	171	63	0.41	R II	Lougheed Island
300B807750104300	Skate B-80	77.82	-104.96	1032 M	2.54	334	2.21	4.44	1.78	175	70	0.33	R II	Lougheed Island

LOCATION_ID	NAME	LAT	LONG	DEPTH	TOC	TMAX	S1	S2	S3	HI	OI	PI	EQUIP	UNIT
300B807750104300	Skate B-80	77.82	-104.96	1038 M	2.48	326	2.67	4.05	1.91	163	77	0.40	R II	Lougheed Island
300B807750104300	Skate B-80	77.82	-104.96	1044 M	2.05	432	1.50	3.78	1.70	184	83	0.28	R II	Lougheed Island
300B807750104300	Skate B-80	77.82	-104.96	1050 M	2.61	333	2.20	4.45	1.13	170	43	0.33	R II	Lougheed Island
300B807750104300	Skate B-80	77.82	-104.96	1056 M	1.11	438	0.32	1.66	0.55	150	50	0.16	R II	Lougheed Island
300B807750104300	Skate B-80	77.82	-104.96	1062 M	1.05	437	0.26	1.29	0.63	123	60	0.17	R II	Lougheed Island
300B807750104300	Skate B-80	77.82	-104.96	1068 M	3.88	336	7.64	8.16	1.69	210	44	0.48	R II	Lougheed Island
300B807750104300	Skate B-80	77.82	-104.96	1074 M	2.41	433	1.86	3.94	1.35	163	56	0.32	R II	Lougheed Island
300B807750104300	Skate B-80	77.82	-104.96	1080 M	1.40	436	0.40	2.21	0.86	158	61	0.15	R II	Lougheed Island
300B807750104300	Skate B-80	77.82	-104.96	1086 M	1.31	438	0.36	1.91	0.83	146	63	0.16	R II	Lougheed Island
300B807750104300	Skate B-80	77.82	-104.96	1092 M	2.96	430	2.60	5.33	1.31	180	44	0.33	R II	Lougheed Island
300B807750104300	Skate B-80	77.82	-104.96	1098 M	1.36	437	0.32	1.86	0.90	137	66	0.15	R II	Lougheed Island
300B807750104300	Skate B-80	77.82	-104.96	1326 M	1.15	437	0.19	0.81	0.77	70	67	0.19	R II	Barrow
300B807750104300	Skate B-80	77.82	-104.96	1332 M	0.88	437	0.08	0.54	0.39	61	44	0.13	R II	Barrow
300B807750104300	Skate B-80	77.82	-104.96	1338 M	1.00	436	0.12	0.67	0.64	67	64	0.15	R II	Barrow
300B807750104300	Skate B-80	77.82	-104.96	1344 M	0.98	437	0.11	0.57	0.52	58	53	0.16	R II	Barrow
300B807750104300	Skate B-80	77.82	-104.96	1350 M	1.02	438	0.14	0.62	0.64	61	63	0.18	R II	Barrow
300B807750104300	Skate B-80	77.82	-104.96	1356 M	0.96	440	0.08	0.41	0.20	43	21	0.16	R II	Barrow
300B807750104300	Skate B-80	77.82	-104.96	1362 M	2.04	434	1.44	4.36	1.09	214	53	0.25	R II	Barrow
300B807750104300	Skate B-80	77.82	-104.96	1368 M	1.86	331	1.18	2.41	1.08	130	58	0.33	R II	Barrow
300B807750104300	Skate B-80	77.82	-104.96	1374 M	3.27	330	4.82	5.65	1.40	173	43	0.46	R II	Barrow
300B807750104300	Skate B-80	77.82	-104.96	1380 M	0.93	439	0.11	0.76	0.46	82	49	0.13	R II	Barrow
300B807750104300	Skate B-80	77.82	-104.96	1386 M	2.50	328	2.51	3.64	1.50	146	60	0.41	R II	Barrow
300B807750104300	Skate B-80	77.82	-104.96	1392 M	1.40	439	0.47	1.89	0.89	135	64	0.20	R II	Barrow
300B807750104300	Skate B-80	77.82	-104.96	1398 M	1.03	442	0.25	0.83	0.83	81	81	0.23	R II	Barrow
300B807750104300	Skate B-80	77.82	-104.96	1404 M	1.03	440	0.20	1.44	0.33	140	32	0.12	R II	Barrow
300B807750104300	Skate B-80	77.82	-104.96	1410 M	0.91	442	0.13	0.97	0.50	107	55	0.12	R II	Barrow
300B807750104300	Skate B-80	77.82	-104.96	1416 M	1.29	439	0.37	1.40	0.76	109	59	0.21	R II	Barrow
300B807750104300	Skate B-80	77.82	-104.96	1422 M	1.76	436	0.99	2.67	0.98	152	56	0.27	R II	Barrow
300B807750104300	Skate B-80	77.82	-104.96	1428 M	0.86	439	0.17	0.87	0.29	101	34	0.16	R II	Barrow
300B807750104300	Skate B-80	77.82	-104.96	1434 M	0.90	438	0.20	0.82	0.25	91	28	0.20	R II	Barrow
300B807750104300	Skate B-80	77.82	-104.96	1440 M	1.06	458	0.21	1.19	0.61	112	58	0.15	R II	Barrow
300B807750104300	Skate B-80	77.82	-104.96	1446 M	0.83	439	0.19	0.83	0.24	100	29	0.19	R II	Barrow
300B807750104300	Skate B-80	77.82	-104.96	1452 M	0.89	439	0.14	0.89	0.29	100	33	0.14	R II	Barrow
300B807750104300	Skate B-80	77.82	-104.96	1458 M	0.84	440	0.12	0.60	0.25	71	30	0.17	R II	Barrow
300B807750104300	Skate B-80	77.82	-104.96	1464 M	0.94	441	0.11	0.85	0.41	90	44	0.11	R II	Barrow
300B807750104300	Skate B-80	77.82	-104.96	1470 M	0.98	441	0.19	1.47	0.35	150	36	0.11	R II	Barrow
300B807750104300	Skate B-80	77.82	-104.96	1476 M	0.90	440	0.15	0.83	0.51	92	57	0.15	R II	Barrow
300B807750104300	Skate B-80	77.82	-104.96	1482 M	0.71	443	0.12	1.01	0.26	142	37	0.11	R II	Barrow
300B807750104300	Skate B-80	77.82	-104.96	1488 M	0.78	442	0.14	0.75	0.59	96	76	0.16	R II	Barrow
300B807750104300	Skate B-80	77.82	-104.96	1494 M	0.63	442	0.06	0.34	0.28	54	44	0.15	R II	Barrow
300B807750104300	Skate B-80	77.82	-104.96	1500 M	0.77	441	0.14	0.85	0.58	110	75	0.14	R II	Barrow
300B807750104300	Skate B-80	77.82	-104.96	1506 M	0.71	444	0.10	0.53	0.40	75	56	0.16	R II	Barrow
300B807750104300	Skate B-80	77.82	-104.96	1512 M	0.63	443	0.08	0.38	0.28	60	44	0.17	R II	Barrow
300B807750104300	Skate B-80	77.82	-104.96	1518 M	0.80	441	0.16	0.98	0.23	123	29	0.14	R II	Barrow
300B807750104300	Skate B-80	77.82	-104.96	1524 M	0.79	443	0.10	0.67	0.25	85	32	0.13	R II	Barrow
300B807750104300	Skate B-80	77.82	-104.96	1530 M	0.71	443	0.08	0.47	0.30	66	42	0.15	R II	Barrow
300B807750104300	Skate B-80	77.82	-104.96	1536 M	0.83	442	0.12	0.78	0.42	94	51	0.13	R II	Barrow
300B807750104300	Skate B-80	77.82	-104.96	1542 M	0.85	444	0.12	0.68	0.54	80	64	0.15	R II	Barrow
300B807750104300	Skate B-80	77.82	-104.96	1548 M	0.85	444	0.15	0.78	0.45	92	53	0.16	R II	Barrow
300B737650105300	Desbarats B-73	76.70	-105.95	528 M	0.89	430	0.07	0.43	0.33	48	37	0.14	R II	King Christian

LOCATION_ID	NAME	LAT	LONG	DEPTH	TOC	TMAX	S1	S2	S3	HI	OI	PI	EQUIP	UNIT
300B737650105300	Desbarats B-73	76.70	-105.95	599 M	0.58	424	0.18	0.50	1.51	86	260	0.26	R II	Barrow
300B667730106000	Cisco B-66	77.42	-106.39	2100 M	1.21	439	0.45	3.02	0.91	250	75	0.13	R II	King Christian
300B667730106000	Cisco B-66	77.42	-106.39	2151 M	0.35	439	0.19	0.81	0.56	231	160	0.19	R II	King Christian
300B667730106000	Cisco B-66	77.42	-106.39	2166 M	0.45	438	0.32	0.74	1.27	164	282	0.30	R II	Lougheed Island
300B667730106000	Cisco B-66	77.42	-106.39	2181 M	0.40	437	0.30	0.85	1.11	213	278	0.26	R II	Lougheed Island
300B667730106000	Cisco B-66	77.42	-106.39	2196 M	0.65	442	0.19	0.71	1.64	109	252	0.21	R II	Lougheed Island
300B667730106000	Cisco B-66	77.42	-106.39	2211 M	0.55	440	0.24	1.07	1.35	195	245	0.18	R II	Lougheed Island
300B667730106000	Cisco B-66	77.42	-106.39	2241 M	0.59	440	0.41	1.41	2.56	239	434	0.23	R II	Lougheed Island
300B667730106000	Cisco B-66	77.42	-106.39	2256 M	0.50	440	0.18	1.86	0.76	372	152	0.09	R II	Maclean Strait
300B667730106000	Cisco B-66	77.42	-106.39	2271 M	0.30	443	0.12	0.66	0.79	220	263	0.15	R II	Maclean Strait
300B667730106000	Cisco B-66	77.42	-106.39	2286 M	0.45	441	0.16	1.27	0.69	282	153	0.11	R II	Grosvenor Island
300B667730106000	Cisco B-66	77.42	-106.39	2301 M	0.51	441	0.16	1.20	1.05	235	206	0.12	R II	Skybattle
300B667730106000	Cisco B-66	77.42	-106.39	2316 M	0.44	444	0.17	0.95	0.77	216	175	0.15	R II	Skybattle
300B667730106000	Cisco B-66	77.42	-106.39	2331 M	0.44	443	0.13	0.87	0.47	198	107	0.13	R II	Skybattle
300B667730106000	Cisco B-66	77.42	-106.39	2346 M	0.64	442	0.13	0.72	0.68	113	106	0.15	R II	Skybattle
300B667730106000	Cisco B-66	77.42	-106.39	2361 M	0.44	442	0.14	0.93	0.79	211	180	0.13	R II	Barrow
300B667730106000	Cisco B-66	77.42	-106.39	2376 M	0.36	442	0.10	0.77	0.49	214	136	0.11	R II	Barrow
300B667730106000	Cisco B-66	77.42	-106.39	2391 M	0.38	442	0.07	0.97	0.55	255	145	0.07	R II	Barrow
300B647630109300	Chads Creek B-64	76.39	-109.91	4470 F	0.86	435	0.07	0.35	0.27	41	31	0.17	R II	Barrow
300B447630108000	Drake B-44	76.39	-108.27	3800 F	0.94	434	0.08	0.37	3.11	39	331	0.18	R II	Barrow
300B067820102300	Kristoffer Bay B-06	78.25	-102.54	5390 F	1.14	443	1.39	2.06	0.51	181	45	0.40	R II	Maclean Strait
300B067820102300	Kristoffer Bay B-06	78.25	-102.54	6710 F	1.20	493	0.25	0.46	0.40	38	33	0.35	R II	Barrow
300B067820102300	Kristoffer Bay B-06	78.25	-102.54	7010 F	0.82	514	0.16	0.27	0.54	33	66	0.37	R II	Barrow
300B067820102300	Kristoffer Bay B-06	78.25	-102.54	7500 F	0.79	471	0.22	0.32	0.44	41	56	0.41	R II	Barrow
300B067820102300	Kristoffer Bay B-06	78.25	-102.54	7800 F	0.78	400	0.32	0.27	0.35	35	45	0.54	R II	Barrow
300B067820102300	Kristoffer Bay B-06	78.25	-102.54	8210 F	0.72	442	0.40	0.32	0.46	44	64	0.56	R II	Barrow
300B067820102300	Kristoffer Bay B-06	78.25	-102.54	8510 F	0.72	405	0.28	0.23	0.31	32	43	0.55	R II	Barrow
300B067820102300	Kristoffer Bay B-06	78.25	-102.54	9050 F	0.83	441	0.44	0.22	0.28	27	34	0.67	R II	Barrow
300B067820102300	Kristoffer Bay B-06	78.25	-102.54	9300 F	0.86	365	0.36	0.13	0.20	15	23	0.73	R II	Barrow
300B067820102300	Kristoffer Bay B-06	78.25	-102.54	9750 F	1.13	388	0.61	0.20	0.47	18	42	0.75	R II	Barrow
300B067820102300	Kristoffer Bay B-06	78.25	-102.54	10010 F	1.28	361	1.06	0.21	0.36	16	28	0.83	R II	Barrow
300A737800102000	Wallis A-73	77.87	-102.45	2211 M	1.39	436	0.37	4.00	0.43	288	31	0.08	R II	Maclean Strait
300A737800102000	Wallis A-73	77.87	-102.45	2427 M	2.50	436	0.76	10.75	0.49	430	20	0.07	R II	Grosvenor Island
300A737800102000	Wallis A-73	77.87	-102.45	2574 M	1.46	435	1.18	2.72	0.46	186	32	0.30	R II	Skybattle
300A737800102000	Wallis A-73	77.87	-102.45	2618 M	0.66	380	0.42	0.20	0.36	30	55	0.68	R II	Skybattle
300A737800102000	Wallis A-73	77.87	-102.45	2676 M	0.80	429	1.17	0.97	0.37	121	46	0.55	R II	Barrow
300A737800102000	Wallis A-73	77.87	-102.45	2751 M	0.80	471	0.27	0.29	0.45	36	56	0.48	R II	Barrow
300A737800102000	Wallis A-73	77.87	-102.45	2805 M	0.68	480	0.21	0.26	0.41	38	60	0.45	R II	Barrow
300A727730105000	Pat Bay A-72	77.35	-105.45	7400 F	0.90	438	0.40	1.24	0.43	138	48	0.24	R II	Lougheed Island
300A727730105000	Pat Bay A-72	77.35	-105.45	7450 F	0.72	438	0.15	1.70	0.37	236	51	0.08	R II	Lougheed Island
300A727730105000	Pat Bay A-72	77.35	-105.45	7450 F	2.40	443	0.29	2.28	0.53	95	22	0.11	R II	Lougheed Island
300A727730105000	Pat Bay A-72	77.35	-105.45	7500 F	0.83	442	0.24	1.23	0.39	148	47	0.16	R II	Lougheed Island
300A727730105000	Pat Bay A-72	77.35	-105.45	7700 F	0.60	444	0.12	0.54	0.17	90	28	0.18	R II	Grosvenor Island
300A727730105000	Pat Bay A-72	77.35	-105.45	7800 F	0.98	442	0.13	1.00	0.65	102	66	0.12	R II	Skybattle
300A727730105000	Pat Bay A-72	77.35	-105.45	7800 F	1.31	441	0.22	1.00	0.59	76	45	0.18	R II	Skybattle
300A727730105000	Pat Bay A-72	77.35	-105.45	7850 F	1.08	441	0.29	0.92	0.40	85	37	0.24	R II	Skybattle
300A727730105000	Pat Bay A-72	77.35	-105.45	7900 F	0.70	440	0.14	0.56	0.34	80	49	0.20	R II	Barrow
300A727730105000	Pat Bay A-72	77.35	-105.45	7950 F	0.91	440	0.21	0.99	0.51	109	56	0.18	R II	Barrow
300A727730105000	Pat Bay A-72	77.35	-105.45	8000 F	0.76	436	0.12	0.37	0.39	49	51	0.24	R II	Barrow
300A727730105000	Pat Bay A-72	77.35	-105.45	8050 F	0.61	442	0.10	0.27	0.37	44	61	0.27	R II	Barrow

LOCATION_ID	NAME	LAT	LONG	DEPTH	TOC	TMAX	S1	S2	S3	HI	OI	PI	EQUIP	UNIT
300A727730105000	Pat Bay A-72	77.35	-105.45	8100 F	0.63	439	0.05	0.24	0.25	38	40	0.17	R II	Barrow
300A727730105000	Pat Bay A-72	77.35	-105.45	8100 F	0.92	442	0.14	0.39	0.27	42	29	0.26	R II	Barrow
300A727730105000	Pat Bay A-72	77.35	-105.45	8150 F	0.95	444	0.13	0.41	0.52	43	55	0.24	R II	Barrow
300A727730105000	Pat Bay A-72	77.35	-105.45	8200 F	1.00	441	0.16	0.47	0.32	47	32	0.25	R II	Barrow
300A727730105000	Pat Bay A-72	77.35	-105.45	8250 F	0.81	443	0.20	0.49	0.28	60	35	0.29	R II	Barrow
300A727730105000	Pat Bay A-72	77.35	-105.45	8300 F	0.81	442	0.14	0.49	0.23	60	28	0.22	R II	Barrow
300A727730105000	Pat Bay A-72	77.35	-105.45	8350 F	0.80	445	0.12	0.41	0.22	51	28	0.23	R II	Barrow
300A727730105000	Pat Bay A-72	77.35	-105.45	8400 F	0.78	441	0.08	0.61	0.23	78	29	0.12	R II	Barrow
300A727730105000	Pat Bay A-72	77.35	-105.45	8400 F	0.90	444	0.15	0.70	0.33	78	37	0.18	R II	Barrow
300A267730099300	Grenadier A-26	77.42	-99.64	981 M	1.07	434	0.23	1.27	2.19	119	205	0.15	R II	Heiberg
300A267730099300	Grenadier A-26	77.42	-99.64	1020 M	69.26	427	2.77	51.29	17.77	74	26	0.05	R II	Heiberg
300A267730099300	Grenadier A-26	77.42	-99.64	1200 M	1.11	438	0.05	0.48	1.83	43	165	0.09	R II	Barrow
300A267730099300	Grenadier A-26	77.42	-99.64	1299 M	0.93	431	0.11	0.57	2.80	61	301	0.16	R II	Barrow
300A267730099300	Grenadier A-26	77.42	-99.64	1401 M	0.89	433	0.07	0.54	0.98	61	110	0.11	R II	Barrow
300A267730099300	Grenadier A-26	77.42	-99.64	1500 M	1.45	434	0.13	2.93	0.81	202	56	0.04	R II	Barrow
300A267730099300	Grenadier A-26	77.42	-99.64	1551 M	3.10	429	0.41	13.44	1.25	434	40	0.03	R II	Barrow
300A267730099300	Grenadier A-26	77.42	-99.64	1572 M	2.46	434	0.31	8.66	1.04	352	42	0.03	R II	Barrow
300A267730099300	Grenadier A-26	77.42	-99.64	1578 M	2.21	430	0.27	7.16	1.16	324	52	0.04	R II	Barrow
300A267730099300	Grenadier A-26	77.42	-99.64	1584 M	2.00	436	0.22	6.45	0.91	323	46	0.03	R II	Barrow
300A267720106300	Whitefish A-26	77.25	-106.64	2250 M	1.02	439	0.27	1.23	0.63	121	62	0.18	R II	King Christian
300A267720106300	Whitefish A-26	77.25	-106.64	2259 M	1.00	438	0.25	0.99	0.87	99	87	0.20	R II	King Christian
300A267720106300	Whitefish A-26	77.25	-106.64	2268 M	0.92	439	0.22	0.94	0.69	102	75	0.19	R II	Lougheed Island
300A267720106300	Whitefish A-26	77.25	-106.64	2277 M	0.85	441	0.20	1.02	0.63	120	74	0.16	R II	Lougheed Island
300A267720106300	Whitefish A-26	77.25	-106.64	2286 M	0.86	437	0.21	0.91	0.78	106	91	0.19	R II	Lougheed Island
300A267720106300	Whitefish A-26	77.25	-106.64	2295 M	0.94	437	0.26	1.10	0.96	117	102	0.19	R II	Lougheed Island
300A267720106300	Whitefish A-26	77.25	-106.64	2304 M	0.90	444	0.25	1.49	0.71	166	79	0.14	R II	Lougheed Island
300A267720106300	Whitefish A-26	77.25	-106.64	2313 M	0.90	441	0.22	1.18	0.76	131	84	0.16	R II	Lougheed Island
300A267720106300	Whitefish A-26	77.25	-106.64	2361 M	0.62	440	0.17	0.83	0.52	134	84	0.17	R II	Grosvenor Island
300A267720106300	Whitefish A-26	77.25	-106.64	2370 M	0.75	439	0.18	1.06	0.72	141	96	0.15	R II	Grosvenor Island
300A267720106300	Whitefish A-26	77.25	-106.64	2379 M	0.66	440	0.13	0.59	0.68	89	103	0.18	R II	Skybattle
300A267720106300	Whitefish A-26	77.25	-106.64	2388 M	0.73	438	0.22	0.79	0.68	108	93	0.22	R II	Skybattle
300A267720106300	Whitefish A-26	77.25	-106.64	2397 M	0.72	438	0.19	0.65	0.71	90	99	0.23	R II	Skybattle
300A267720106300	Whitefish A-26	77.25	-106.64	2406 M	0.71	441	0.14	0.68	0.68	96	96	0.17	R II	Barrow
300A267720106300	Whitefish A-26	77.25	-106.64	2415 M	0.66	442	0.14	0.62	0.66	94	100	0.18	R II	Barrow
300A267720106300	Whitefish A-26	77.25	-106.64	2424 M	0.65	442	0.14	0.80	0.51	123	78	0.15	R II	Barrow
300A267720106300	Whitefish A-26	77.25	-106.64	2433 M	0.52	441	0.11	0.55	0.44	106	85	0.17	R II	Barrow
300A267720106300	Whitefish A-26	77.25	-106.64	2442 M	0.63	442	0.14	0.77	0.57	122	90	0.15	R II	Barrow
300A267720106300	Whitefish A-26	77.25	-106.64	2451 M	0.66	440	0.17	0.75	0.36	114	55	0.18	R II	Barrow
300A267720106300	Whitefish A-26	77.25	-106.64	2460 M	0.58	441	0.10	0.64	0.30	110	52	0.14	R II	Barrow
300A267720106300	Whitefish A-26	77.25	-106.64	2469 M	0.65	443	0.11	0.59	0.58	91	89	0.16	R II	Barrow
300A267720106300	Whitefish A-26	77.25	-106.64	2478 M	0.78	439	0.14	0.72	0.85	92	109	0.16	R II	Barrow
300A267720106300	Whitefish A-26	77.25	-106.64	2487 M	0.65	442	0.10	0.52	0.36	80	55	0.16	R II	Barrow
300A267720106300	Whitefish A-26	77.25	-106.64	2496 M	1.02	439	0.45	1.31	1.11	128	109	0.26	R II	Barrow
300A267720106300	Whitefish A-26	77.25	-106.64	2505 M	0.62	439	0.11	0.47	0.45	76	73	0.19	R II	Barrow
300A267720106300	Whitefish A-26	77.25	-106.64	2514 M	0.56	442	0.09	0.43	0.44	77	79	0.17	R II	Barrow



Late Triassic-Early Jurassic Barrow-Heiberg succession