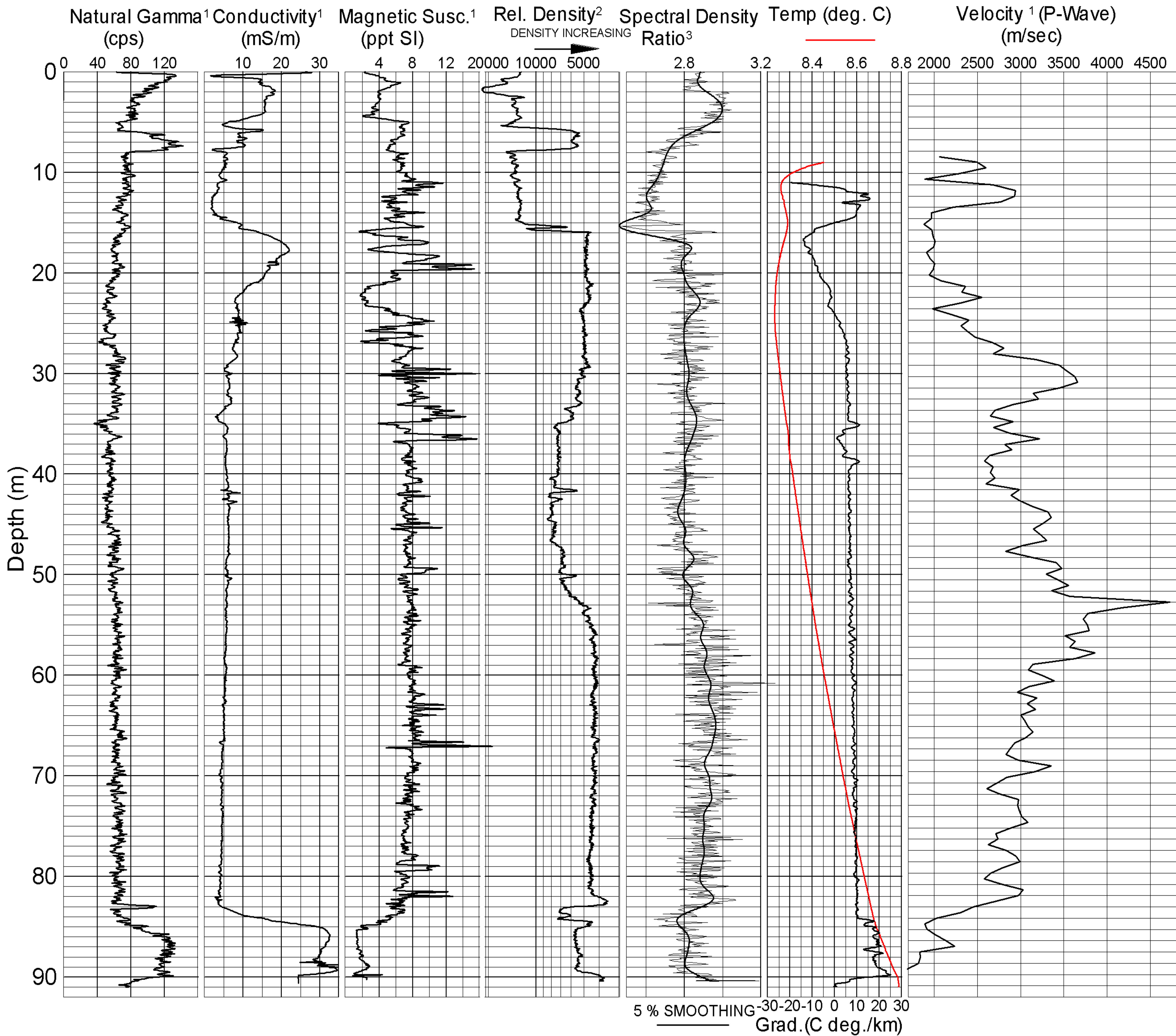


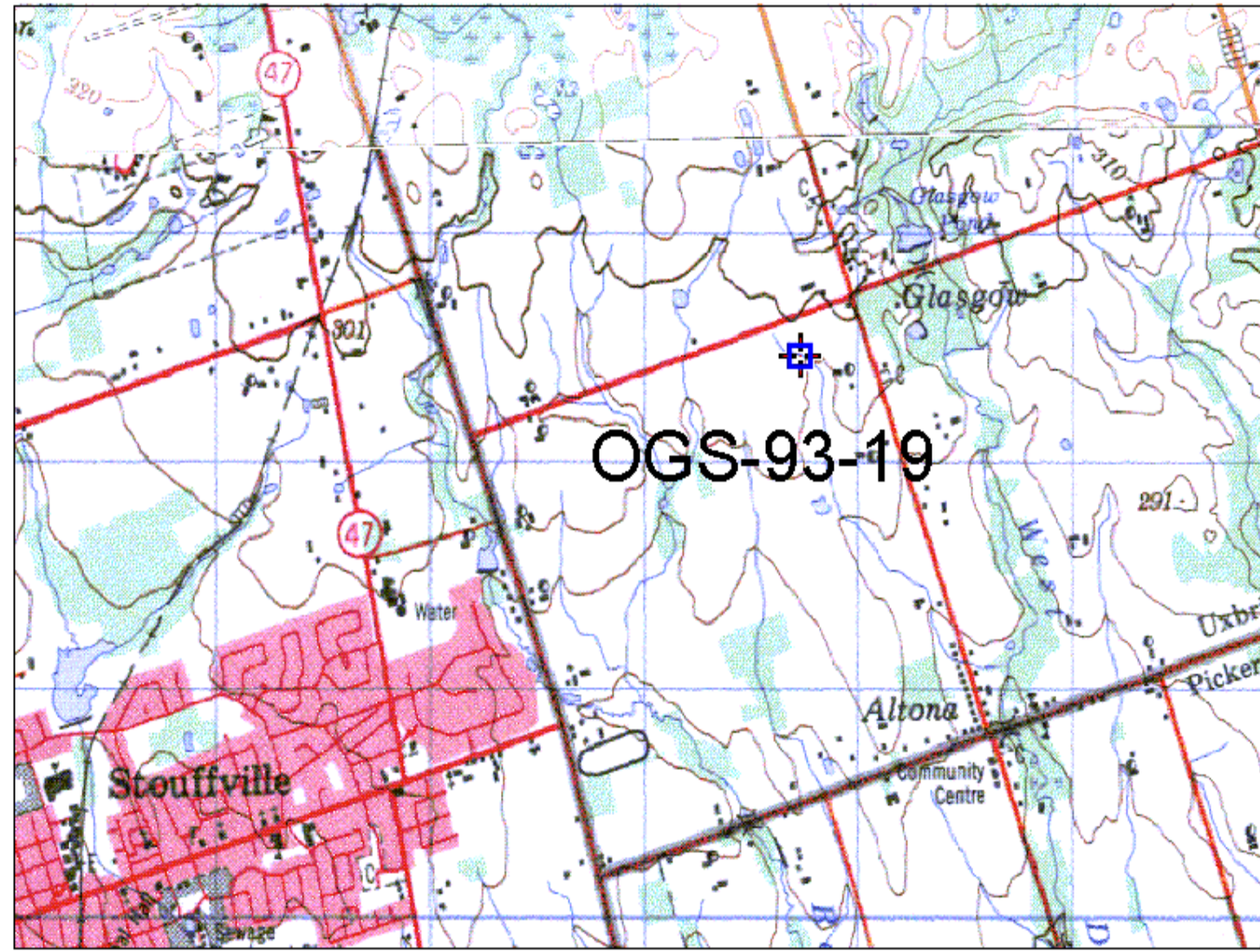
GEOLOGICAL SURVEY OF CANADA

BOREHOLE : OGS-93-19



Driller's Log

TOPSOIL	0
DIAMICTON	
SILT	
DIAMICTON	
interbedded f. & v. fine	
SAND	10
fine to med sand	
silty v. fine sand	
	20
SAND	
med to coarse	
SAND	
silty v. fine	
DIAMICTON	30
GRAVEL	
	40
massive v. dense gritty sandy	
	50
	60
stony gritty sandy silt	
DIAMICTON	
	70
	80
gritty to sandy silt, very dense	
	90
stony silty sand to sandy silt	
CLAY	
clay to silty clay lam. w/ silt	
silt/clay rhythmites	



GEOLOGICAL SURVEY OF CANADA

BOREHOLE: OGS-93-19

PROJECT: Assessment of Regional Aquifers

MAP SHEET 31 D LOCATION: Z 17 0643733 E WGS84 4872478 N

DEPTH: 91 m

CASING: PLASTIC 3"

WATER TABLE: 10 M

OPER: R. GOOD / R. BURNS / J. HUNTER

LOGGING DATE: 08 / 11 / 96

FILE: OGS93-19ML.GRF

NOTES: 1. 3" PVC CASING
2. COUNT (200-1000 keV)
3. (200-1000)/(50-150) keV