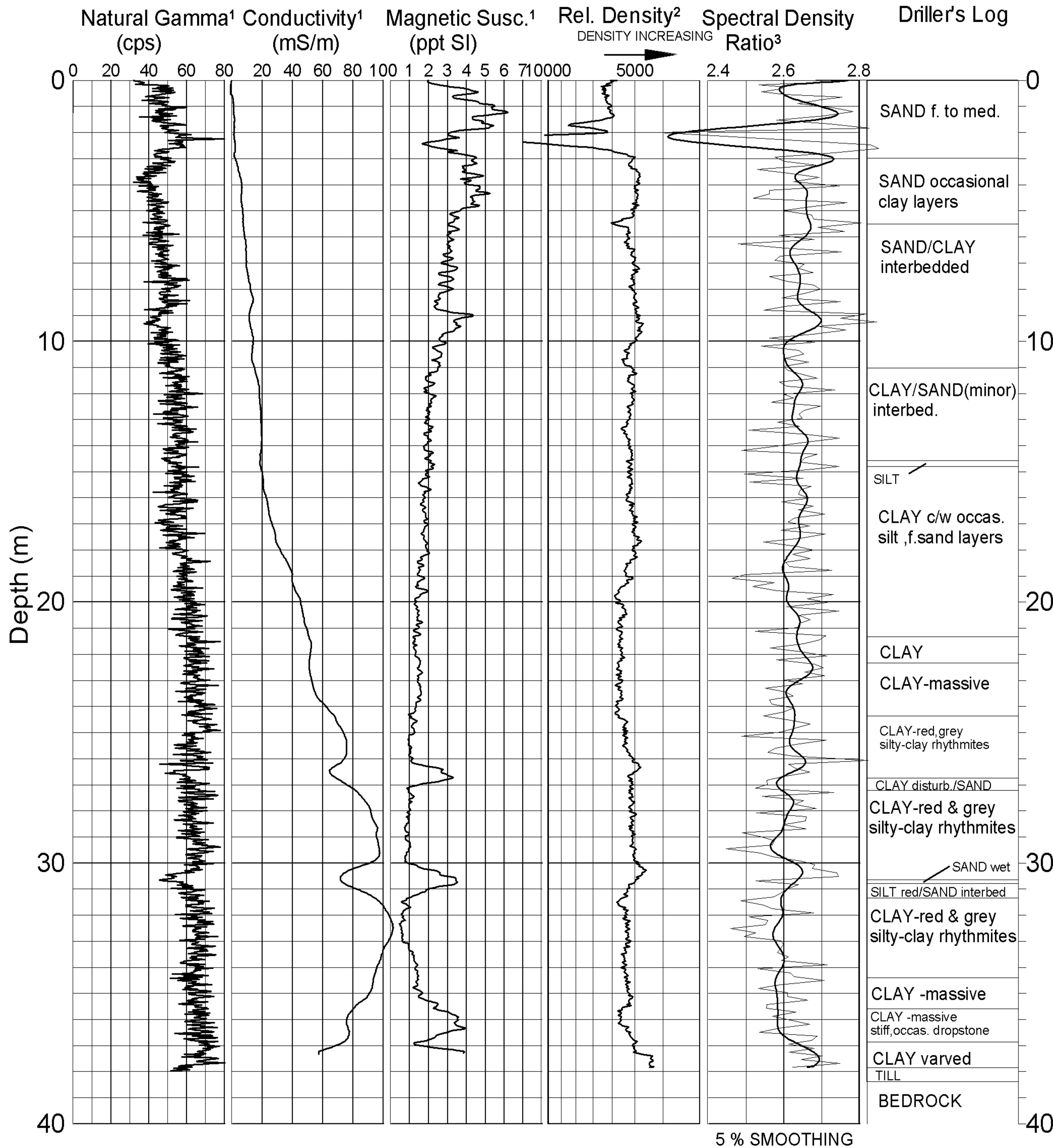
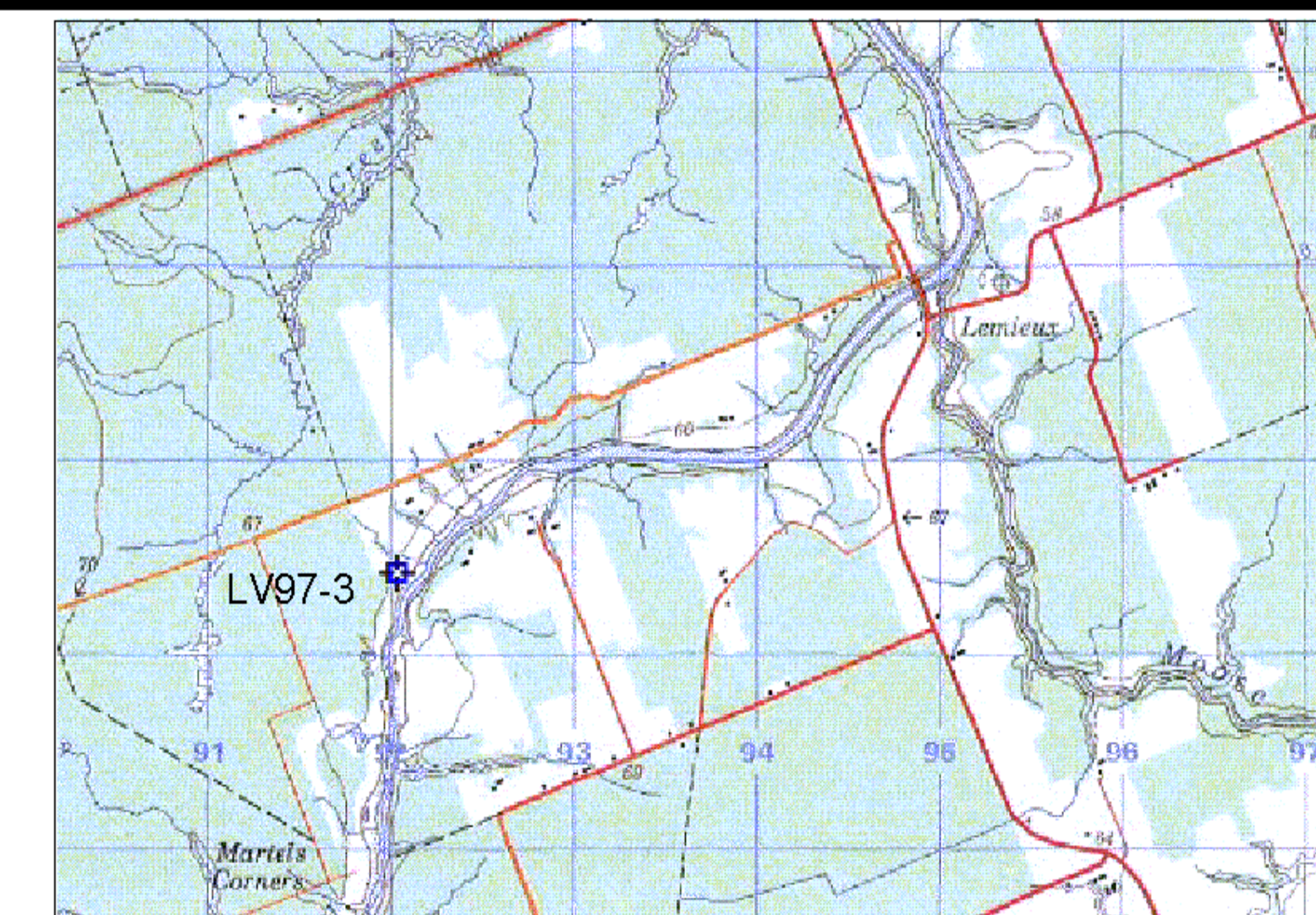



GEOLOGICAL SURVEY OF CANADA

BOREHOLE : LV97-3



 GEOLOGICAL SURVEY OF CANADA	
BOREHOLE: LV-97-3 (Lemieux)	
PROJECT: Eastern Canada Hazards & Geomorphic Processes	
MAP SHEET 31 G	LOCATION: Z 18 0492040 E WGS84 5025420 N
DEPTH: 38 m	
CASING: PLASTIC 3"	
WATER TABLE: near surface	
OPER: R. GOOD / R. BURNS	
LOGGING DATE: 13/05/98	
FILE: LV97-3ML.GRF	
NOTES: 1. 3" PVC CASING 2. COUNT (200-1000 keV) 3. (200-1000)/(50-150)keV	