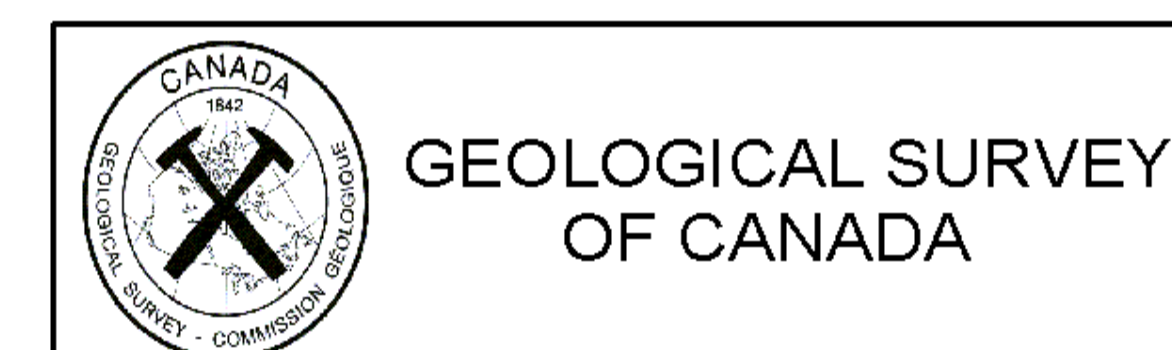
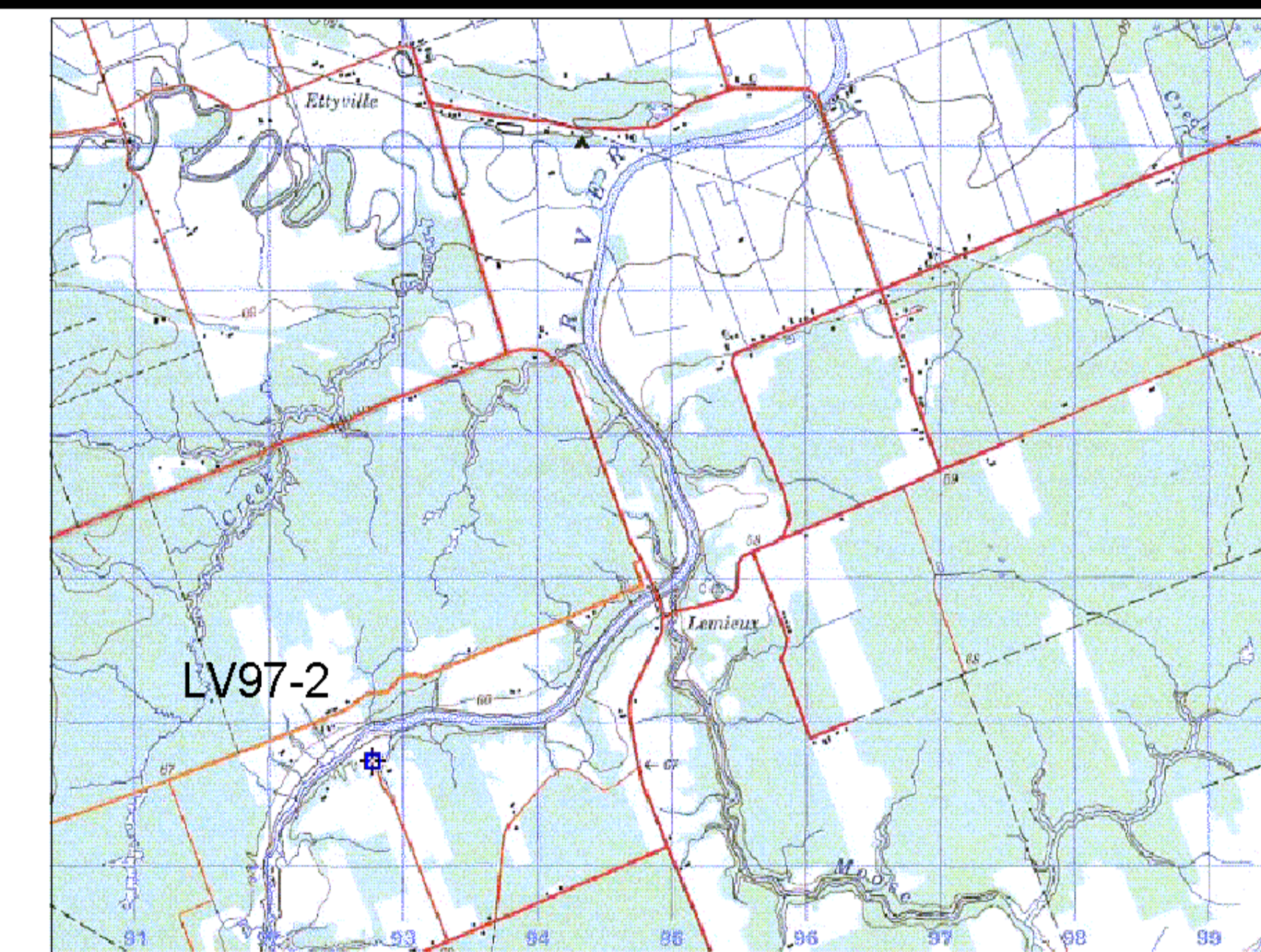
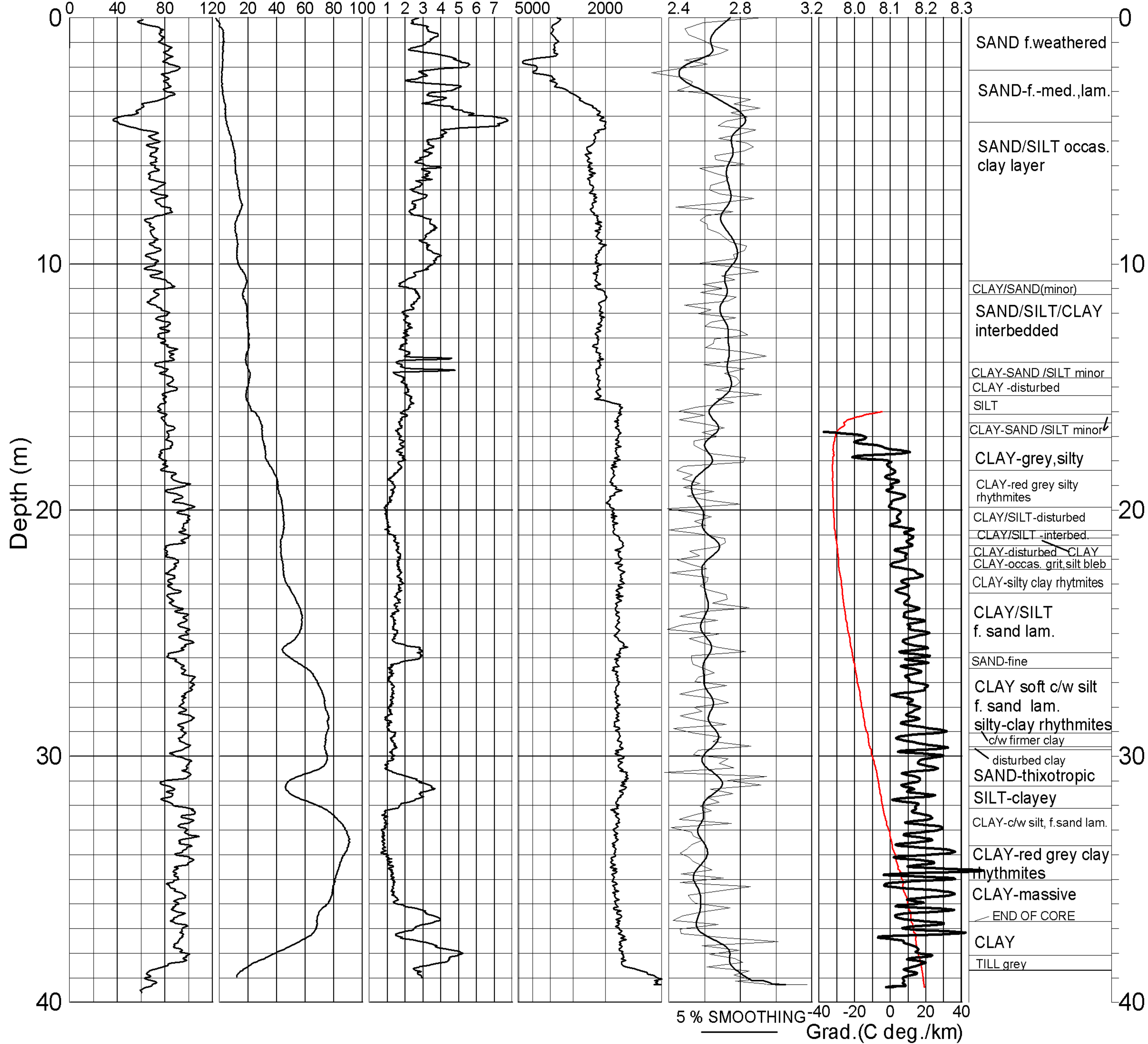


# GEOLOGICAL SURVEY OF CANADA BOREHOLE : LV97-2

Natural Gamma<sup>1</sup> (cps)    Conductivity<sup>1</sup> (mS/m)    Magnetic Susc.<sup>1</sup> (ppt SI)    Rel. Density<sup>2</sup> (DENSITY INCREASING)    Spectral Density Ratio<sup>3</sup>    Temp (deg. C)    Driller's Log



GEOLOGICAL SURVEY OF CANADA

BOREHOLE: **LV97-2** (Lemieux Ont)

PROJECT: Eastern Canada Hazards & Geomorphic Processes

MAP SHEET 31 G    LOCATION: Z 18 0492783 E WGS84 5025726 N

DEPTH: 39 m

CASING: PLASTIC 3"

WATER TABLE: 16 M

OPER: R. GOOD

LOGGING DATE: 28/11/03

FILE: LV97-2ML.GRF

NOTES: 1. 3" PVC CASING  
2. COUNT (200-1000 keV)  
3. (200-1000)/(50-150)keV