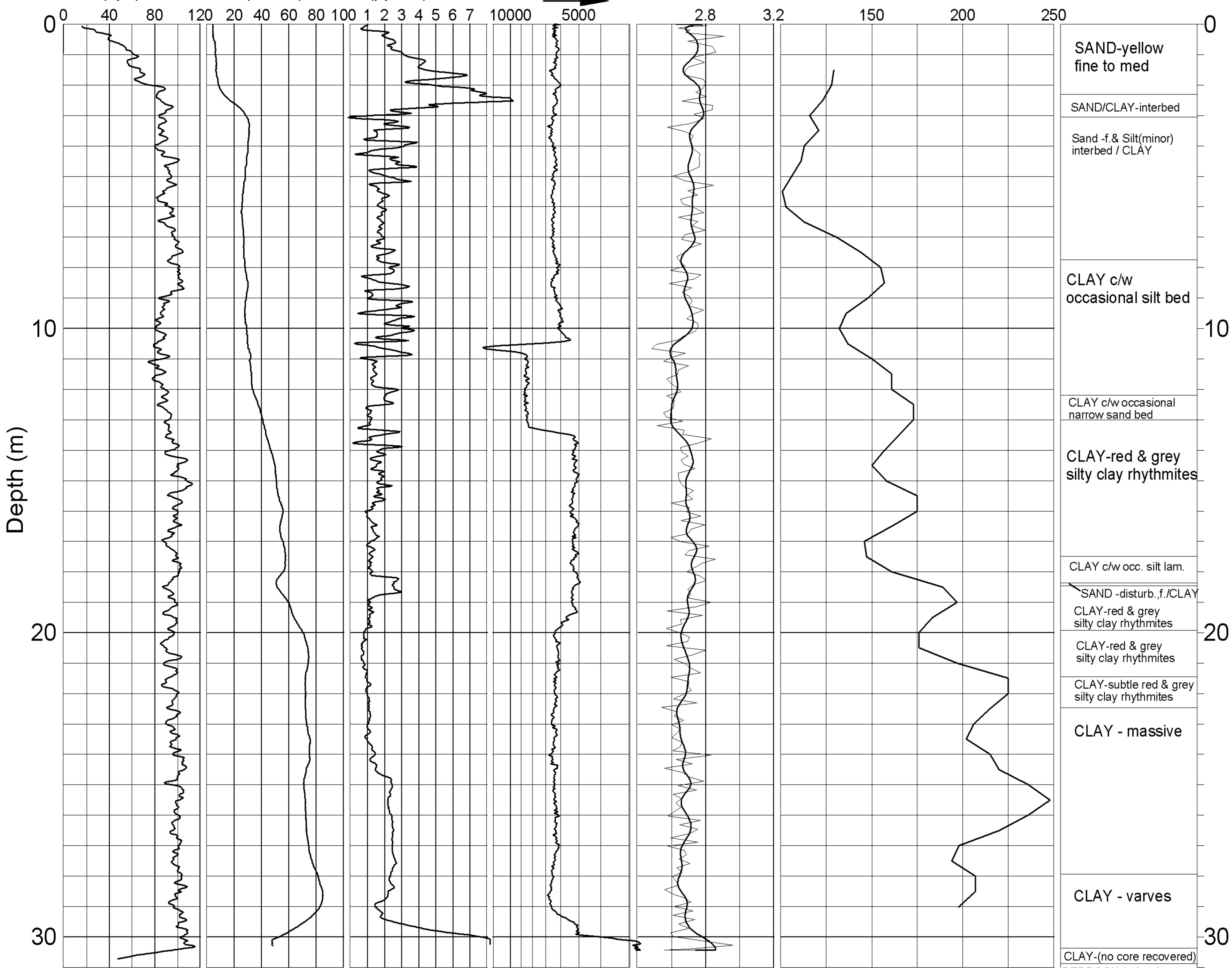


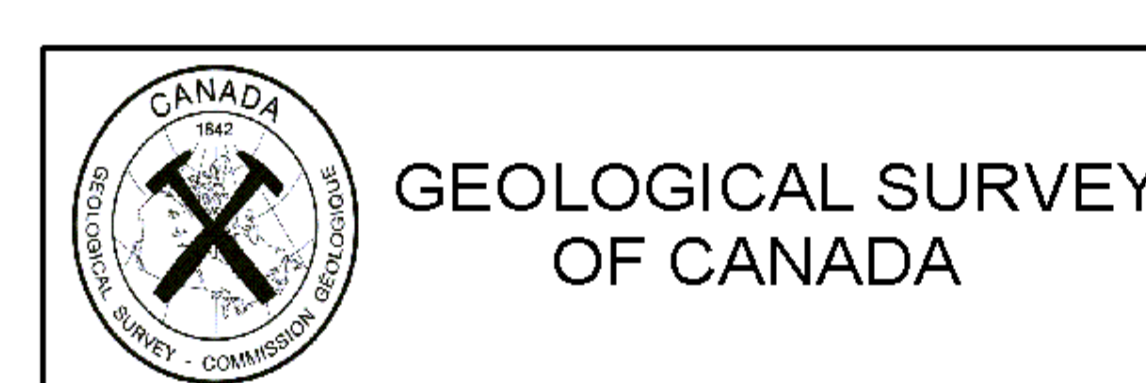
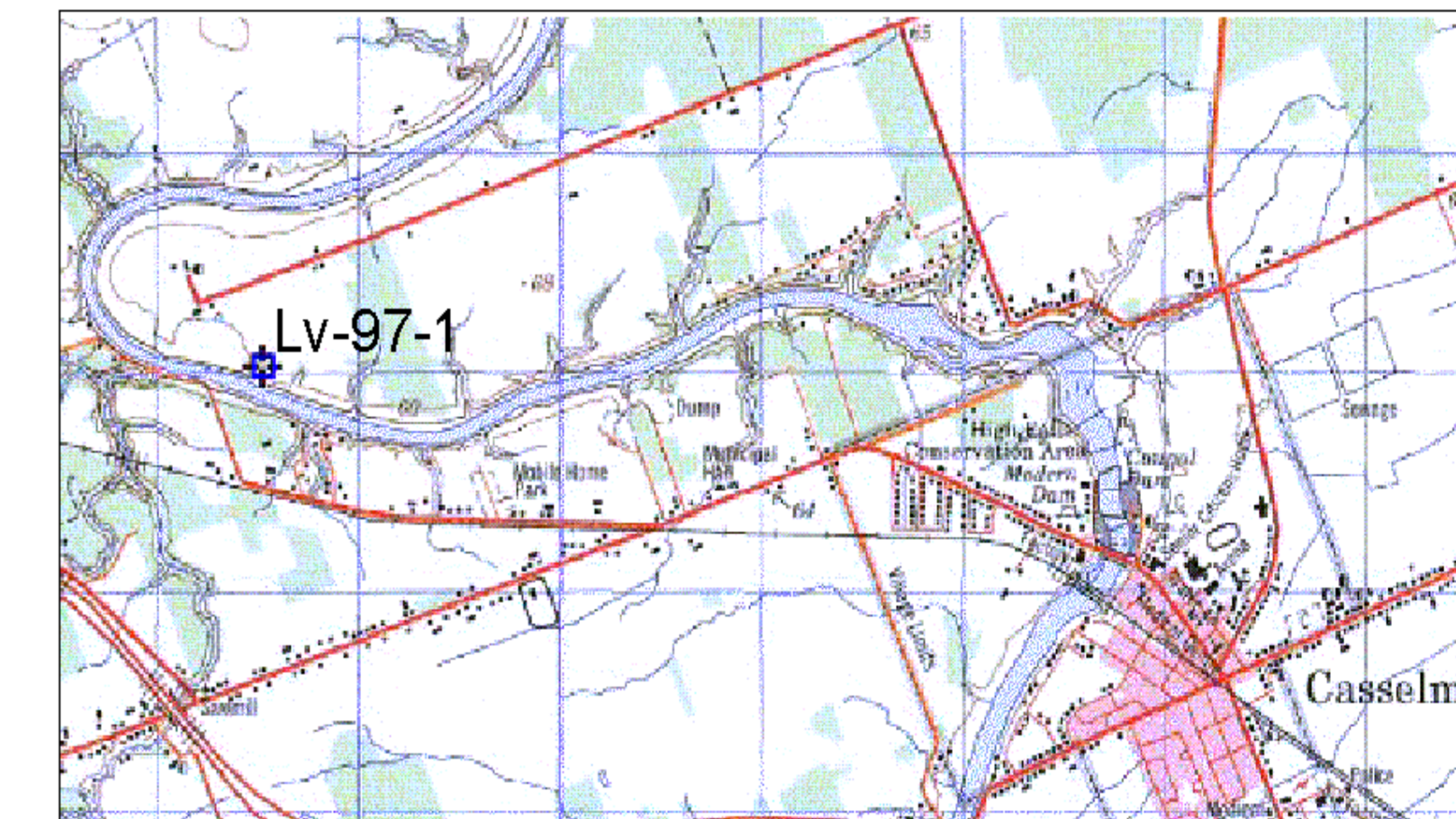
# GEOLOGICAL SURVEY OF CANADA

## BOREHOLE : LV97-1

Natural Gamma<sup>1</sup> (cps)    Conductivity<sup>1</sup> (mS/m)    Magnetic Susc.<sup>1</sup> (ppt SI)    Rel. Density<sup>2</sup> (DENSITY INCREASING)    Spectral Density Ratio<sup>3</sup>    Velocity<sup>1</sup> (P-Wave) (m/sec)<sup>4</sup>    Driller's Log



5 % SMOOTHING



**BOREHOLE: LV97-1** (Lemieux Ont.)

**PROJECT: Eastern Canada Hazards & Geomorphic Processes**

**MAP SHEET 31 G**    **LOCATION: Z 18 0488537 E**  
 WGS84 5019023 N

**DEPTH: 31 m**

**CASING: PLASTIC 3"**

**WATER TABLE: dry hole**

**OPER: R. GOOD / R. BURNS**

**LOGGING DATE: 26 /12 /97 / 07/01/04**

**FILE: LV97-1ML.GRF**

**NOTES:** 1. 3" PVC CASING  
 2. COUNT (200-1000 keV)  
 3. (200-1000)/(50-150)keV  
 4. LOGGED NOV 11,04