

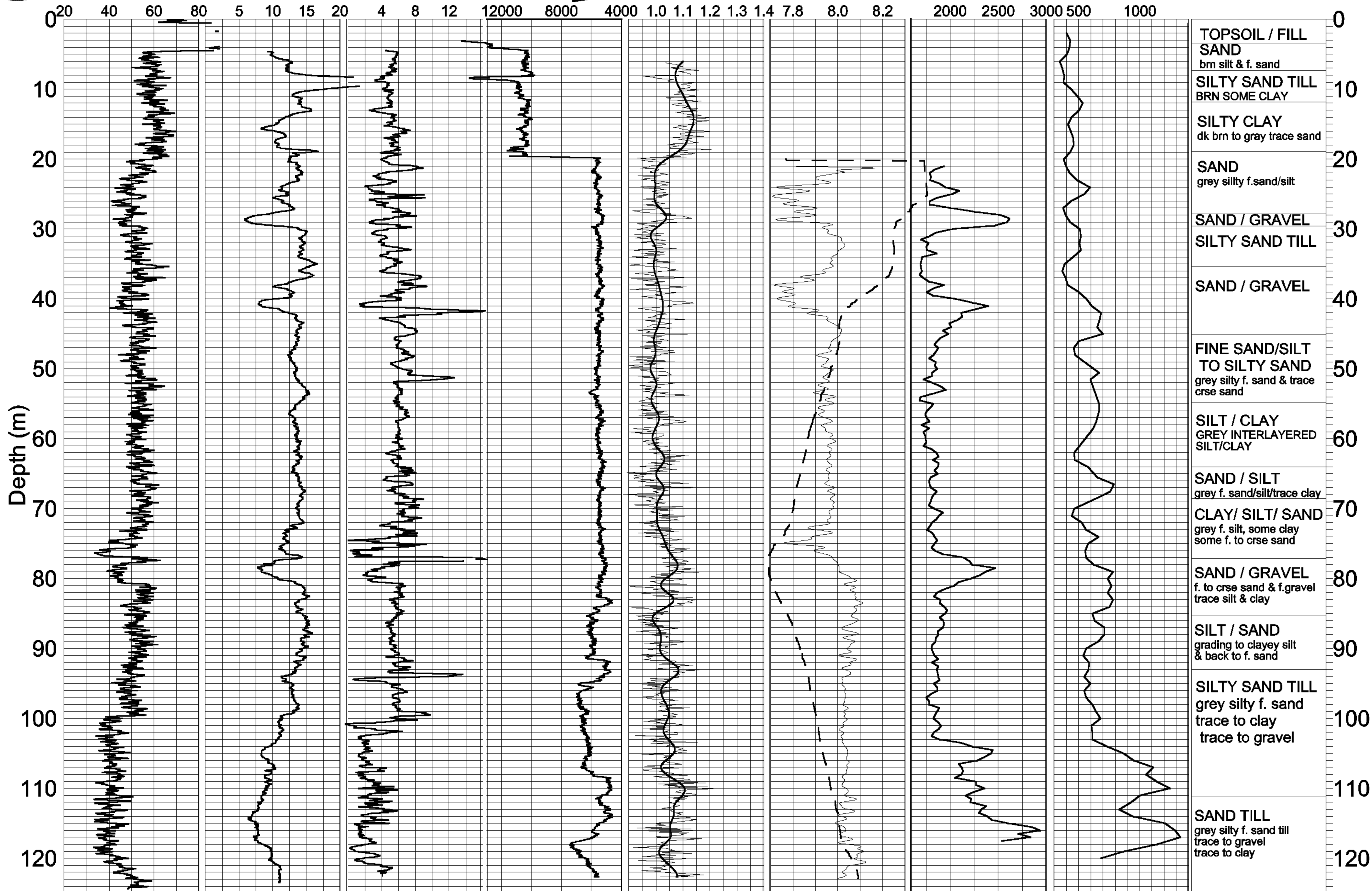


# GEOLOGICAL SURVEY OF CANADA

# BOREHOLE :GLL-1

ZONE 17 4880649 N  
649822 E

Natural Gamma (cps)    Conductivity (mS/m)    Magnetic Susc. (ppt SI)    Rel. Density\* (DENSITY INCREASING)    Spectral Density Ratio\*\*    Temp (deg. C)    P-wave Velocity (m/sec)    S-wave Velocity (m/sec)    General Lithology (Drill Log)



\*COUNT (50-800 keV) 5% SMOOTHING    Grad.(C deg./km)  
\*\* (360-800)/(90-140)keV