



GEOLOGICAL SURVEY OF CANADA

BOREHOLE :AL99-1

ZONE 18 5-11-396E
50-52-935N

Natural Gamma Conductivity Magnetic Susc. Rel. Density* Spectral Density Temp (deg. C) General Lithology

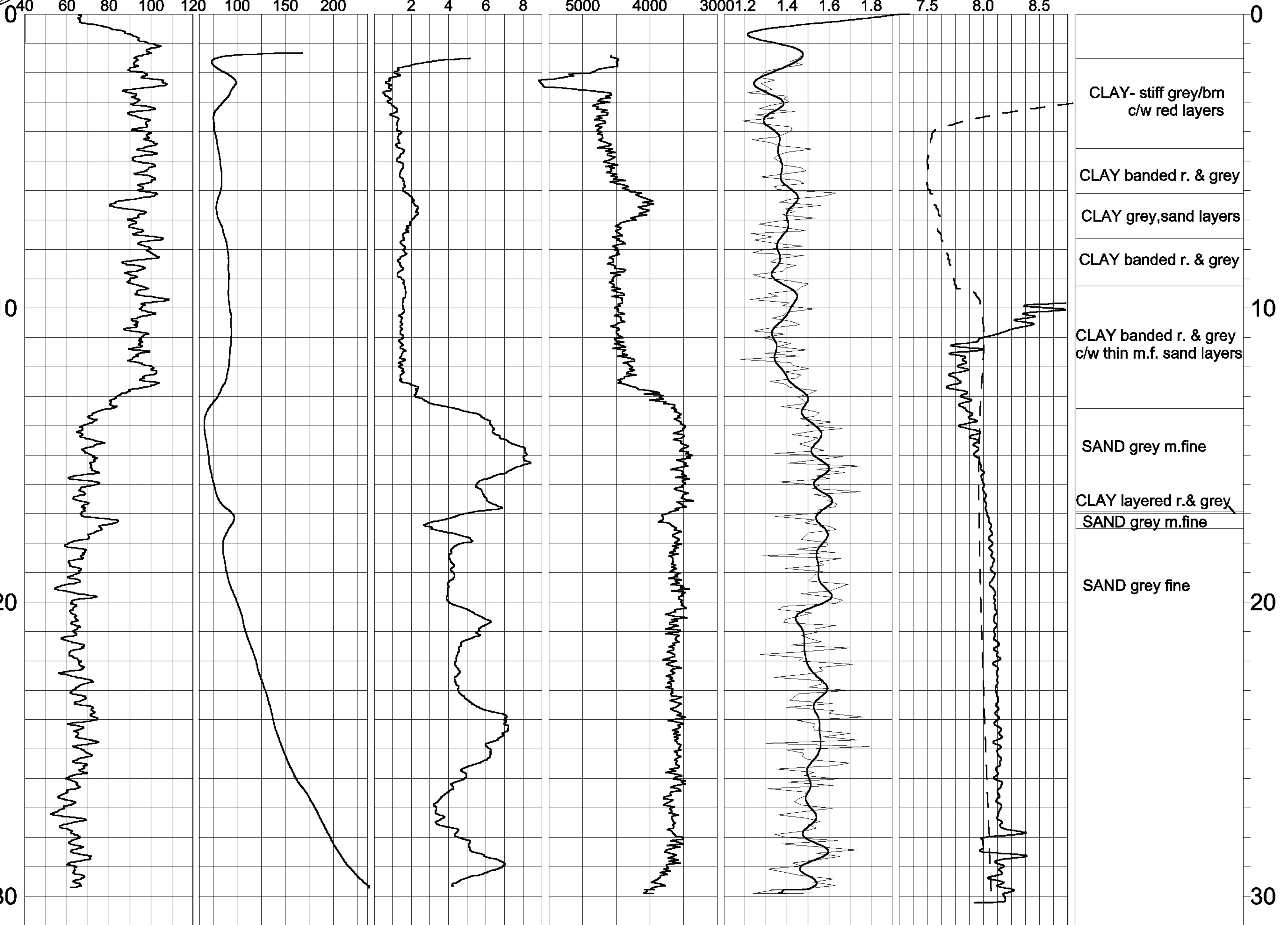
(cps)

(mS/m)

(ppt SI)

DENSITY INCREASING

Ratio**



*COUNT(50-800keV) 5% SMOOTHING

**RATIO = (371-800keV)/(92-133keV)

-60 -40 -20 0 20 40 60
Grad.(C deg./km)

AL99-1M.GRF