

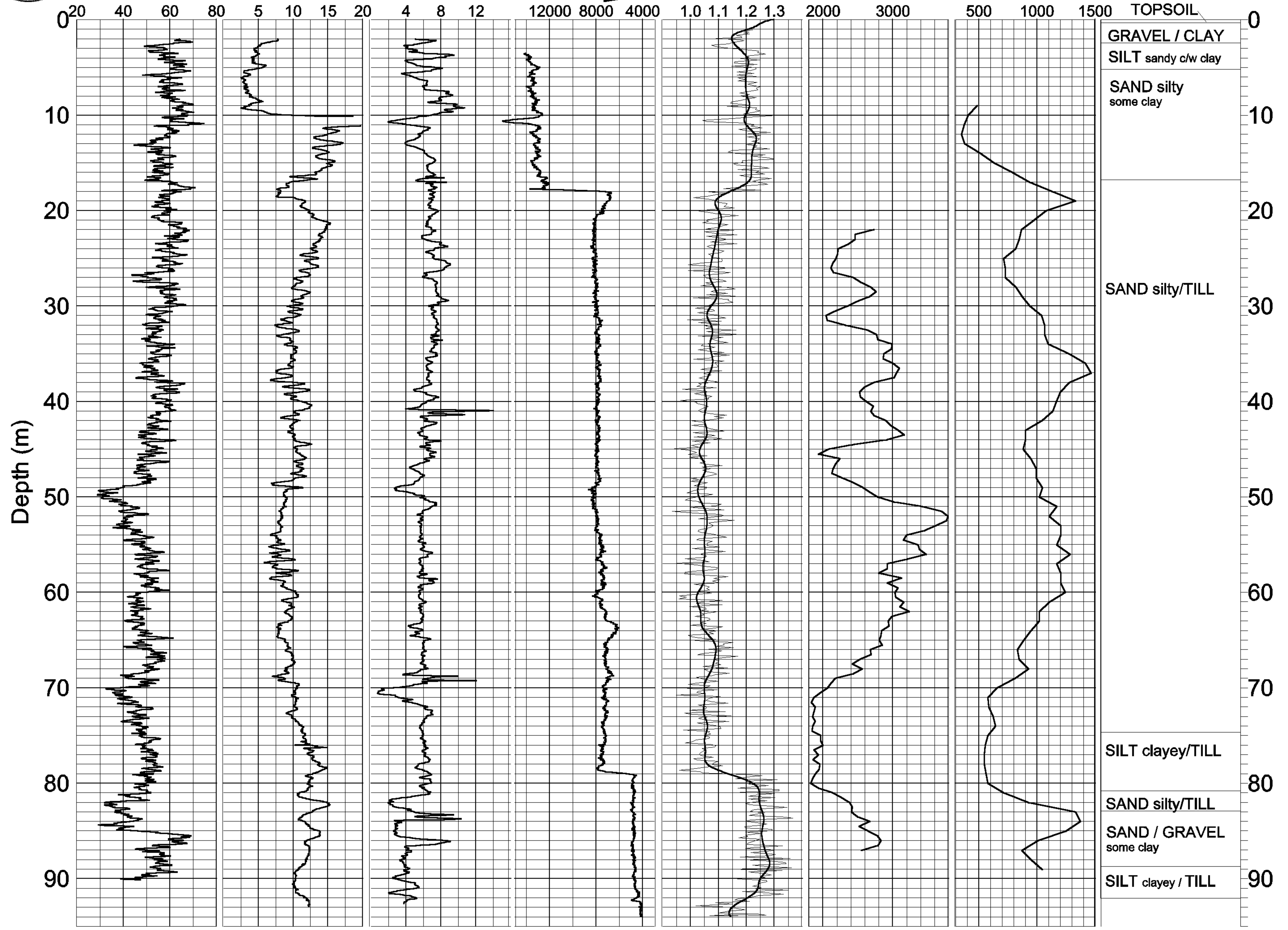


GEOLOGICAL SURVEY OF CANADA

BOREHOLE :GLL-2

ZONE 17 4882781 N
648100 E
Driller's Log

Natural Gamma (cps) Conductivity (mS/m) Magnetic Susc. (ppt SI) Rel. Density* (DENSITY INCREASING) Spectral Density Ratio** P-wave Velocity (m/sec) S-wave Velocity (m/sec)



*COUNT (50-800 keV) 5% SMOOTHING

**((340-800)/(90-140)keV)

GLL-2M.GRF