



GEOLOGICAL SURVEY OF CANADA

BOREHOLE :SHUB95-2,3

ZONE 20 4990320 N
468300 E

Natural Gamma
(cps)

Conductivity
(mS/m)

Magnetic Susc.
(ppt SI)

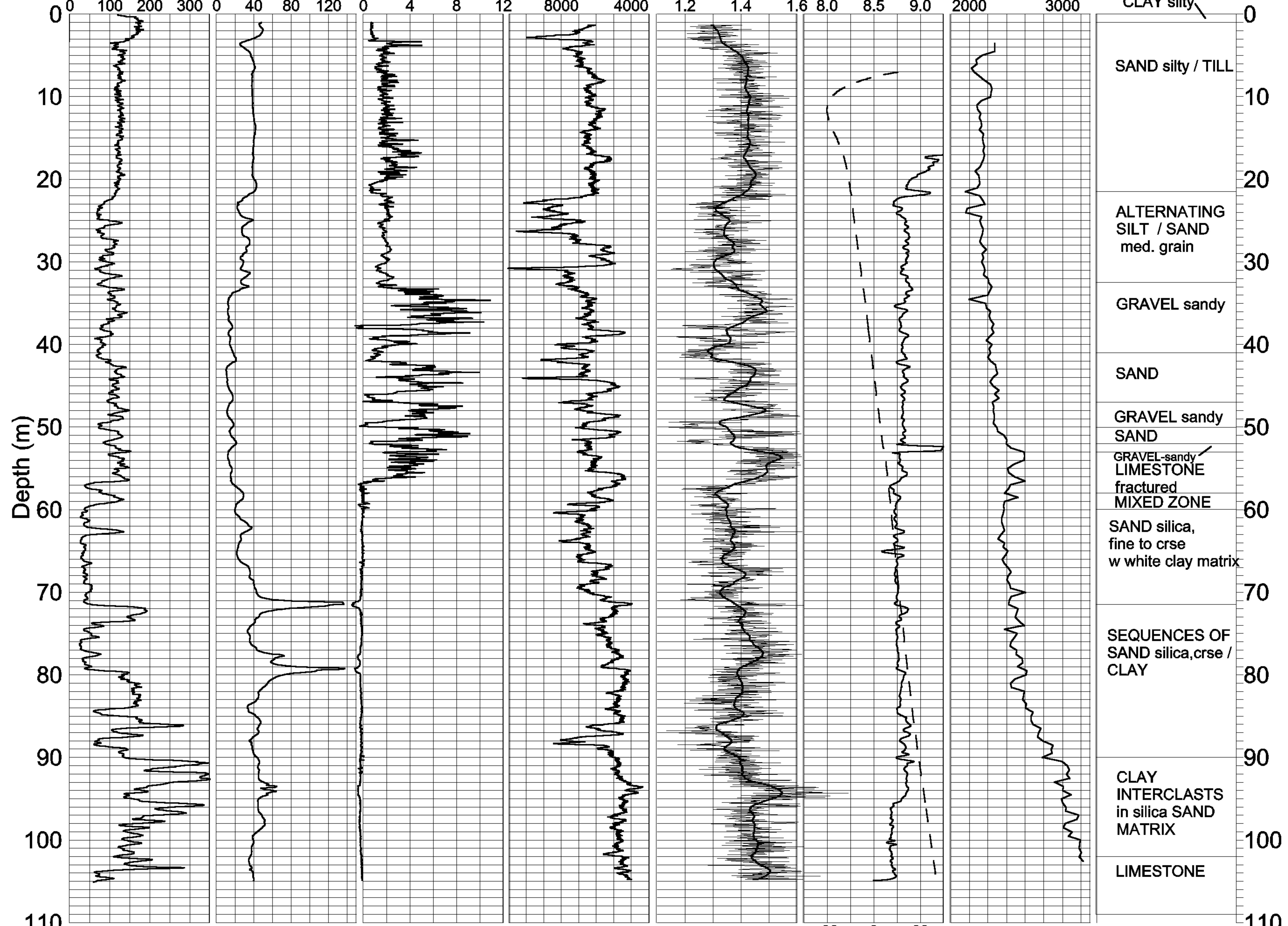
Rel. Density*
DENSITY INCREASING

Spectral Density
Ratio**

Temp (deg. C)

P-wave Velocity
(m/sec)

Driller's Log



*COUNT(50-800keV) 5 % SMOOTHING
 **((350-800)/(75-140)keV) Grad.(C deg./km)