



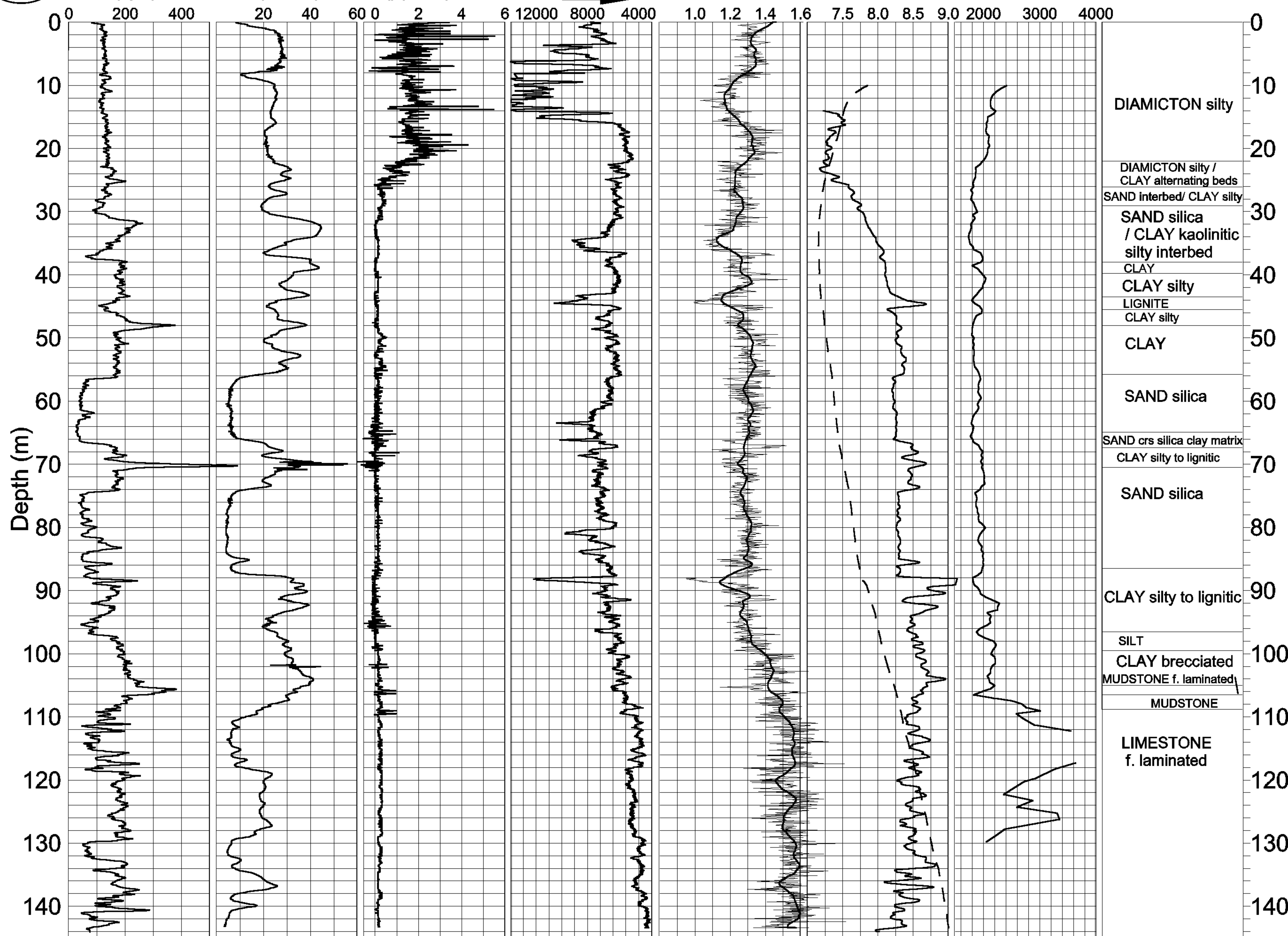
# GEOLOGICAL SURVEY OF CANADA

# BOREHOLE : MQ96-4

ZONE 20 4984760 N  
483030 E

Natural Gamma (cps)    Conductivity (mS/m)    Magnetic Susc. (ppt SI)    Rel. Density\*    Spectral Density Ratio\*\*    Temp (deg. C)    P-wave Velocity (m/sec)

Driller's Log



\*COUNT(50-800keV) 5 % SMOOTHING

\*\* (350-800)/(75-140)keV

Grad.(C deg./km)

MQ96-4M.GRF