

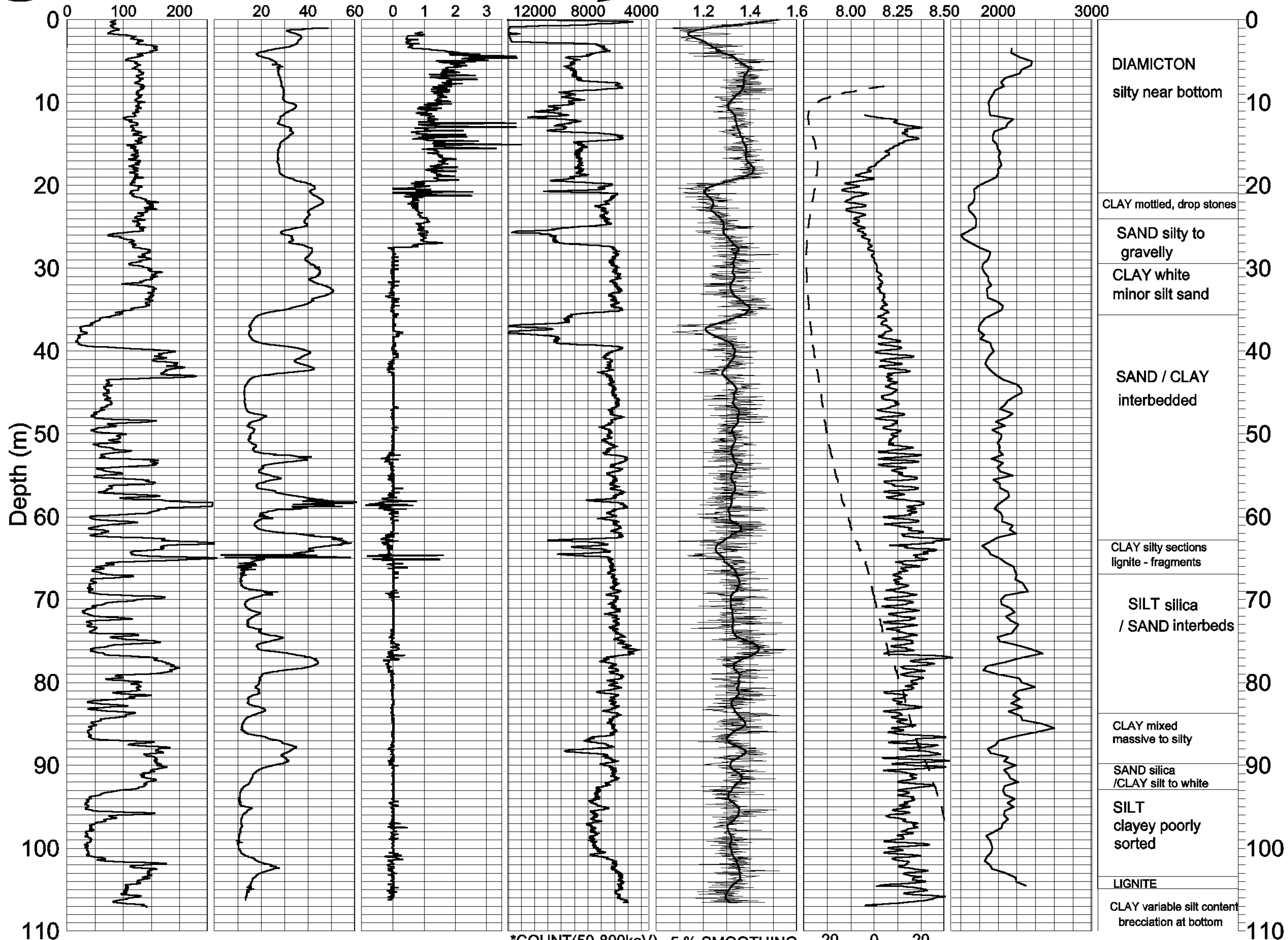


GEOLOGICAL SURVEY OF CANADA

BOREHOLE : MQ95-4

ZONE 20 4984260 N
482950 E

Natural Gamma (cps) Conductivity (mS/m) Magnetic Susc. (ppt SI) Rel. Density* (DENSITY INCREASING) Spectral Density Ratio** Temp (deg. C) P-wave Velocity (m/sec) Driller's Log



*COUNT(50-800keV) 5% SMOOTHING -20 0 20 Grad.(C deg./km)
**(350-800)/(75-140)keV