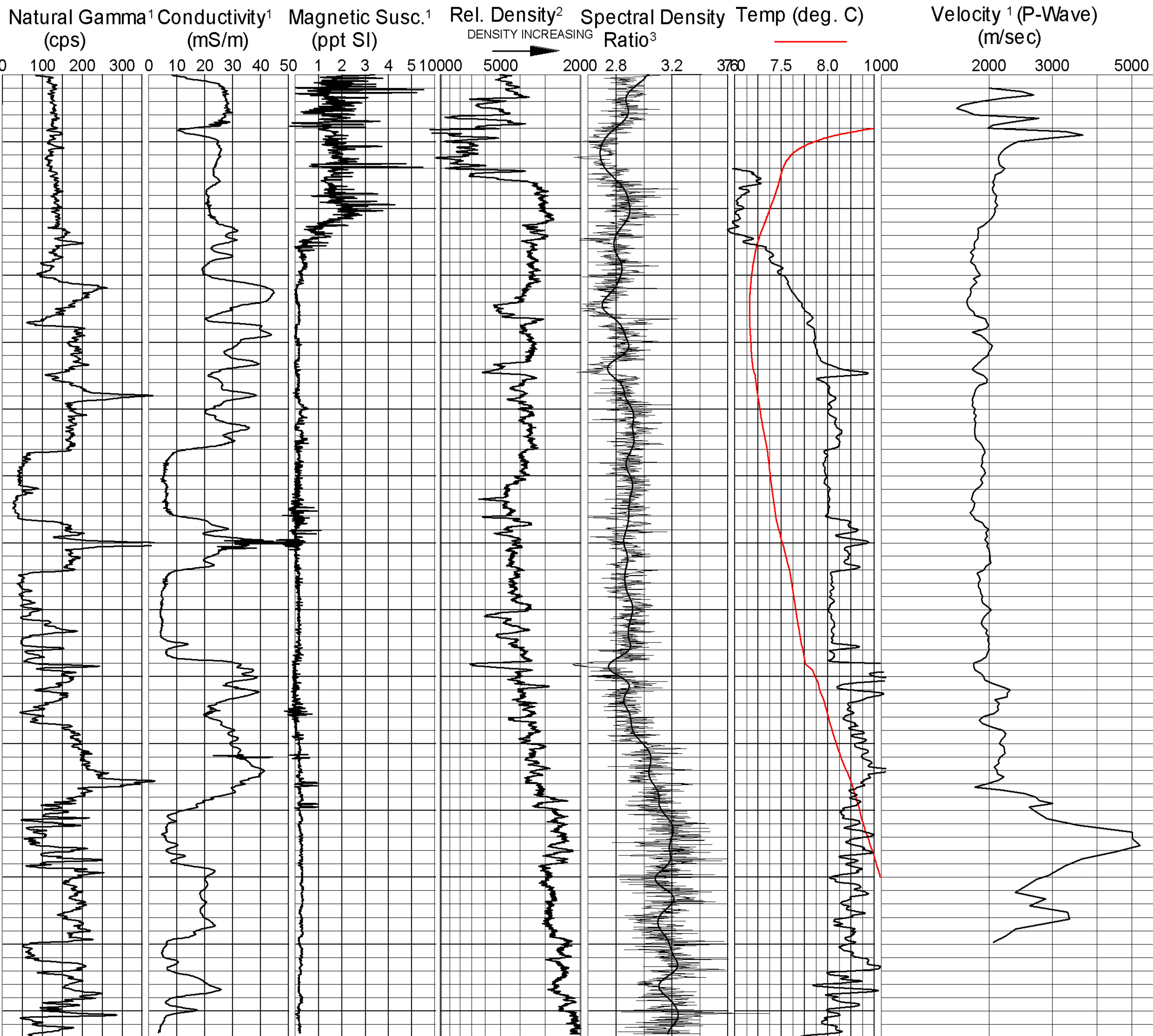


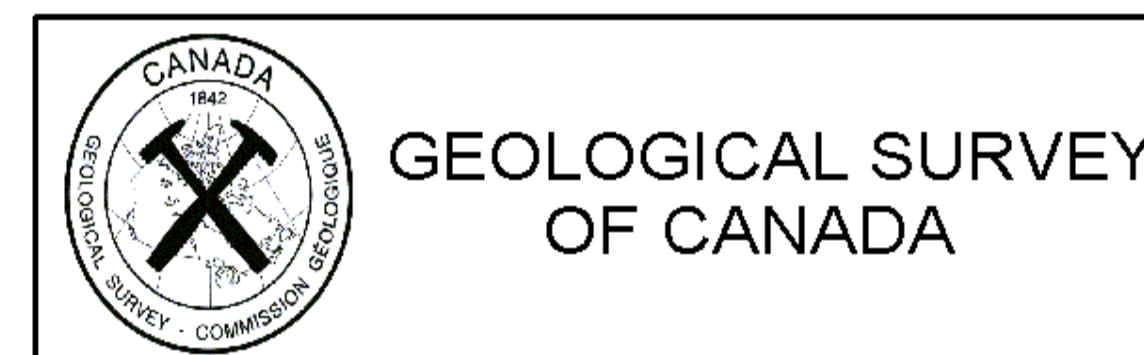
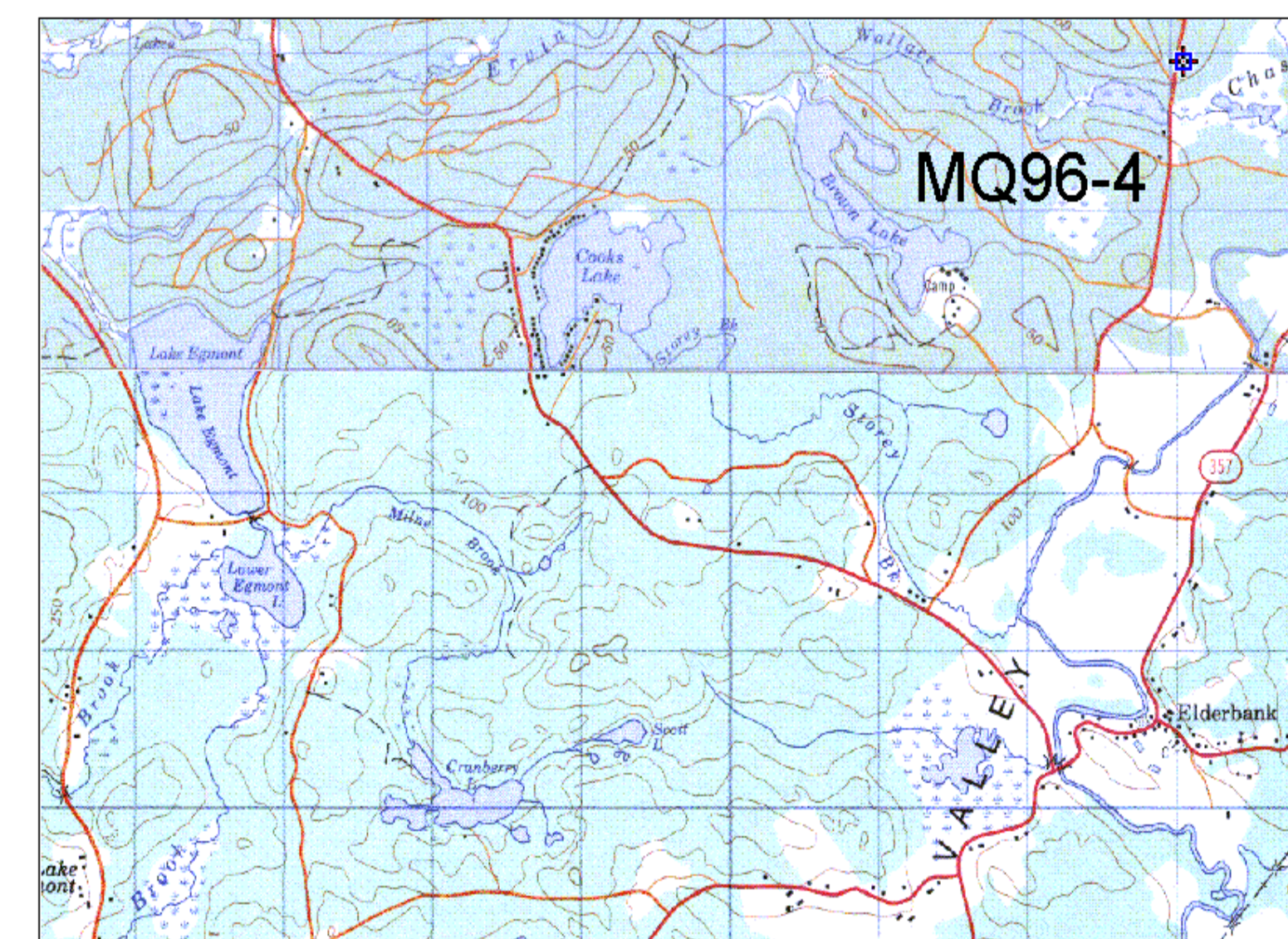
GEOLOGICAL SURVEY OF CANADA

BOREHOLE : MQ96-4



Driller's Log

DIAMICTON silty	0
DIAMICTON silty / CLAY alternating beds	10
SAND interbed/ CLAY silty	20
SAND silica / CLAY kaolinitic silty interbed	30
CLAY	35
CLAY silty	40
LIGNITE	45
CLAY silty	50
CLAY	55
SAND silica	60
SAND crs silica clay matrix	65
CLAY silty to lignitic	70
SAND silica	75
CLAY silty to lignitic	85
SILT	90
CLAY brecciated	95
MUDSTONE f. laminated	100
MUDSTONE	105
LIMESTONE f. laminated	110
	120
	130
	140



GEOLOGICAL SURVEY OF CANADA
BOREHOLE: MQ96-4
 Musquodoboit
PROJECT: Nova Scotia MDA
MAP SHEET: 11 E3 **LOCATION:** Z 20 0483095 E WGS84 4984967 N
DEPTH: 144 m
CASING: PLASTIC 3"
WATER TABLE: 8 M
OPER: R. GOOD / R. BURNS / M. DOUMA
LOGGING DATE: 20 /10 /96
FILE: MQ96-4ML.GRF
NOTES: 1. 3" PVC CASING
 2. COUNT (200-1000 keV)
 3. (200-1000)/(50-150)keV