

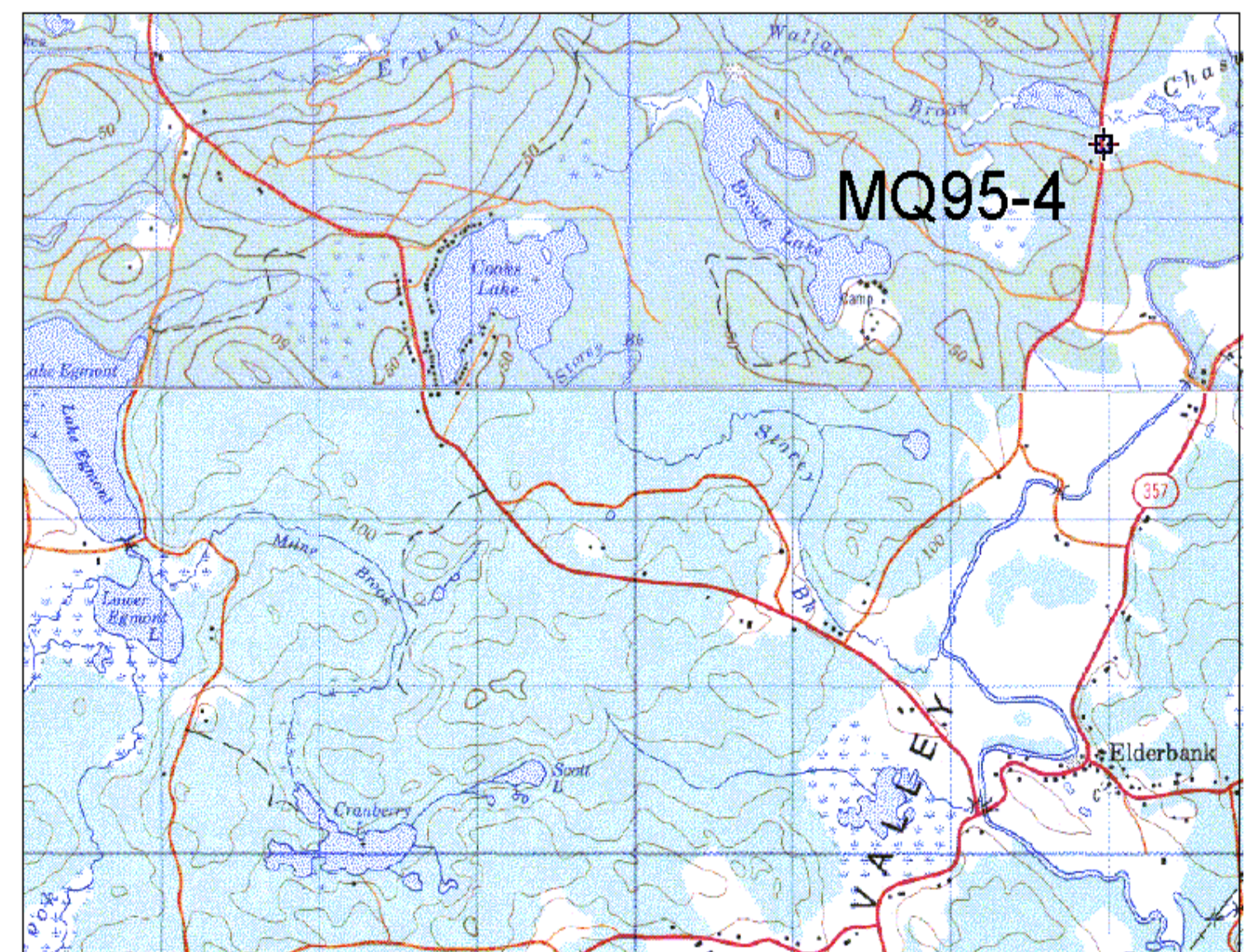
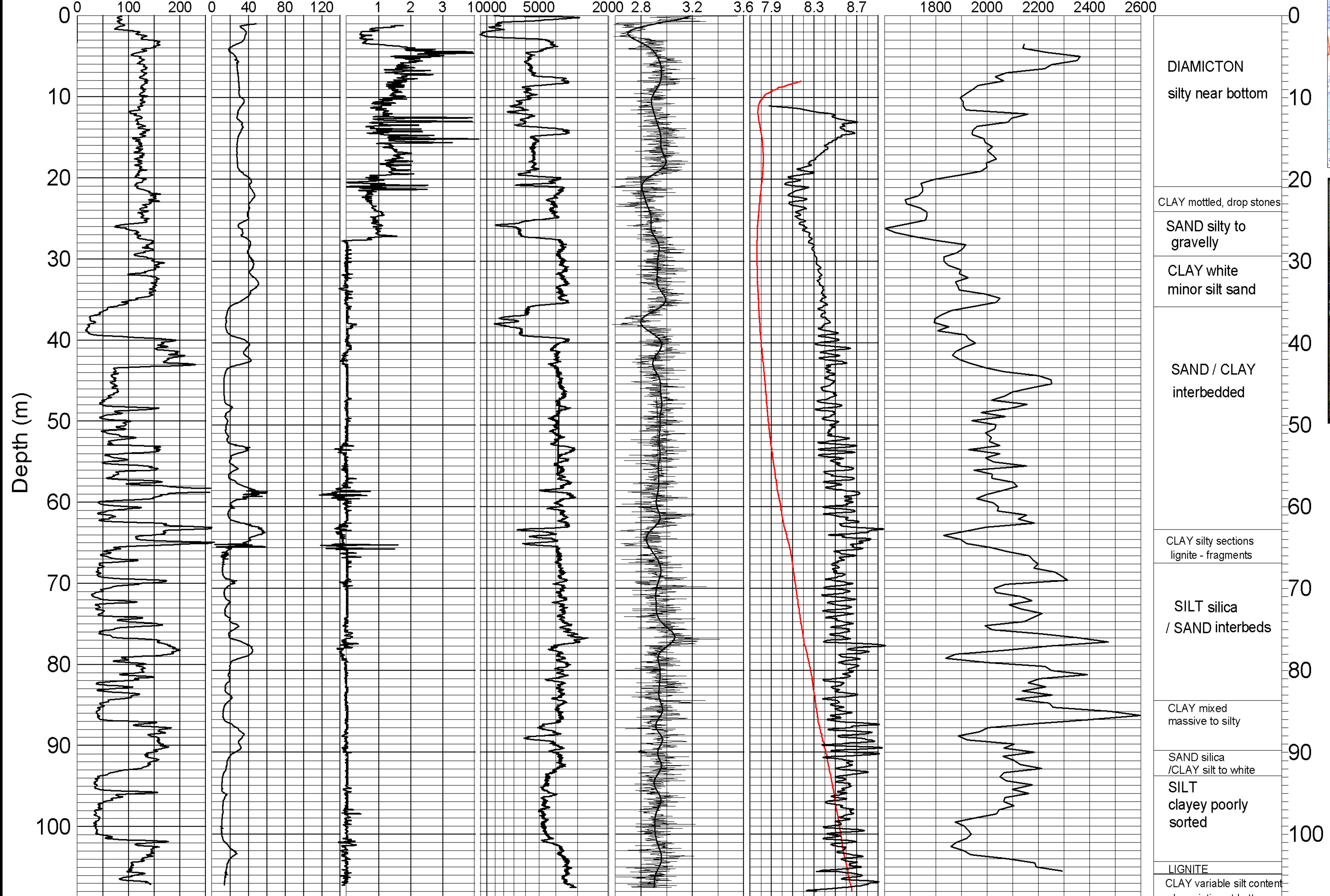
# GEOLOGICAL SURVEY OF CANADA

# BOREHOLE : MQ95-4

Natural Gamma<sup>1</sup> (cps)    Conductivity<sup>1</sup> (mS/m)    Magnetic Susc.<sup>1</sup> (ppt SI)    Rel. Density<sup>2</sup> (DENSITY INCREASING)    Spectral Density Ratio<sup>3</sup>    Temp (deg. C)

Velocity<sup>1</sup> (P-Wave) (m/sec)

Driller's Log



DIAMICTON  
silty near bottom

CLAY mottled, drop stones

SAND silty to gravelly

CLAY white  
minor silt sand

SAND / CLAY  
interbedded

CLAY silty sections  
lignite - fragments

SILT silica  
/ SAND interbeds

CLAY mixed  
massive to silty

SAND silica  
/CLAY silt to white

SILT  
clayey poorly  
sorted

LIGNITE

CLAY variable silt content  
brecciation at bottom

**GEOLOGICAL SURVEY OF CANADA**

**BOREHOLE: MQ95-4**  
Musquadoiboit

**PROJECT:** Nova Scotia MDA

---

**MAP SHEET** 11 E3    **LOCATION:** Z 20 0483015 E  
WGS84 4984467 N

---

**DEPTH:** 107 m

---

**CASING:** PLASTIC 3"

---

**WATER TABLE:** 8 M

---

**OPER:** R. GOOD / R. BURNS / M. DOUMA

---

**LOGGING DATE:** 21 /10 /96

---

**FILE:** MQ95-4ML.GRF

---

**NOTES:** 1. 3" PVC CASING  
2. COUNT (200-1000 keV)  
3. (200-1000)/(50-150)keV

5 % SMOOTHING    -30 -20 -10 0 10 20 30  
Grad. (C deg./km)