

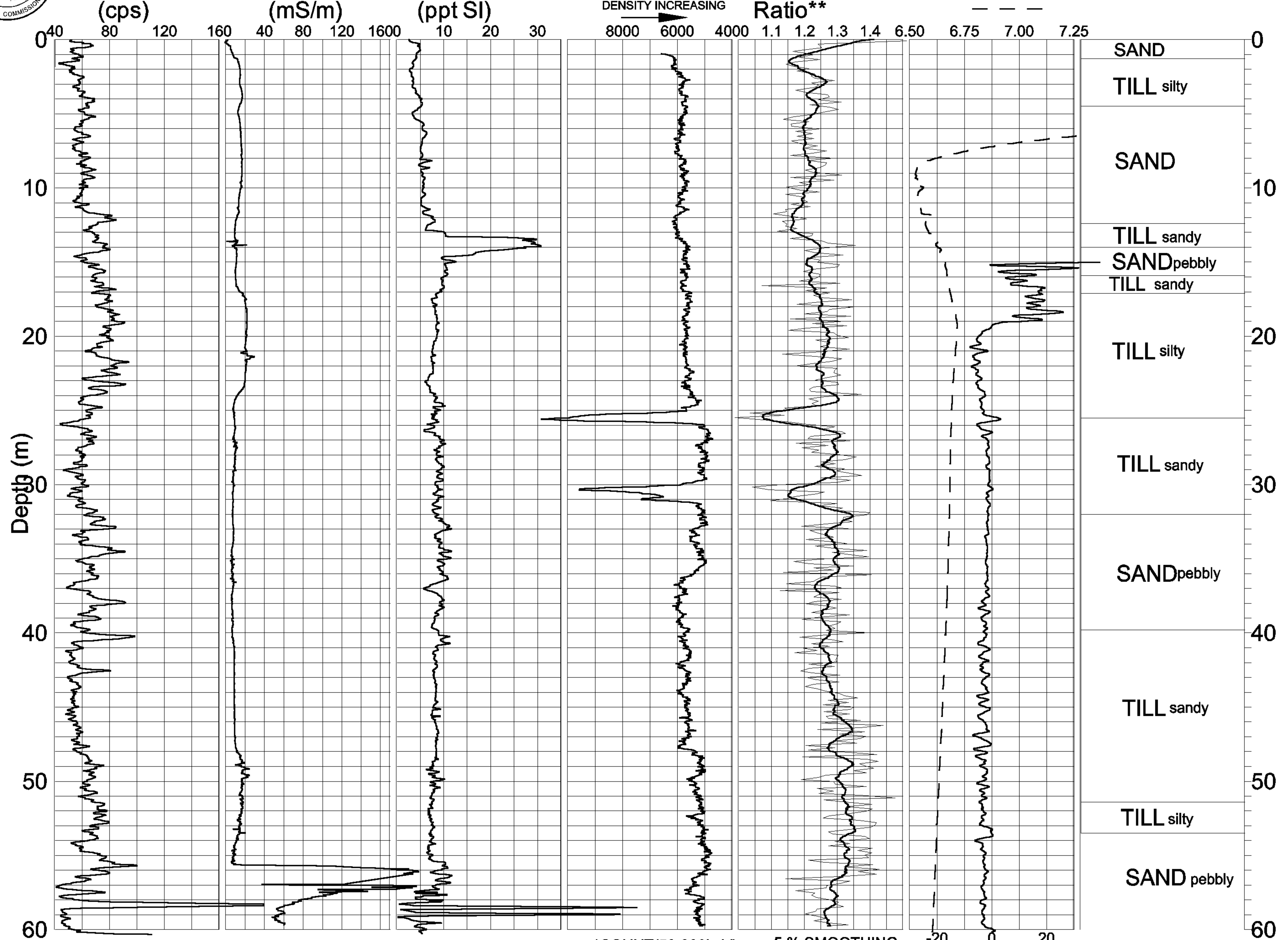


GEOLOGICAL SURVEY OF CANADA

BOREHOLE : SEM92-U

ZONE 14 5528700 N
707400 E

Natural Gamma (cps) Conductivity (mS/m) Magnetic Susc. (ppt SI) Rel. Density* Spectral Density Ratio** Temp (deg. C) Driller's Log



*COUNT(50-800keV)

5% SMOOTHING

Grad.(C deg./km)

**((340-800)/(90-140)keV)

U99M.GRF