



# GEOLOGICAL SURVEY OF CANADA

# BOREHOLE :SEM92-J

ZONE 15 5431900 N  
321900 E

Natural Gamma  
(cps)

Conductivity  
(mS/m)

Magnetic Susc.  
(ppt SI)

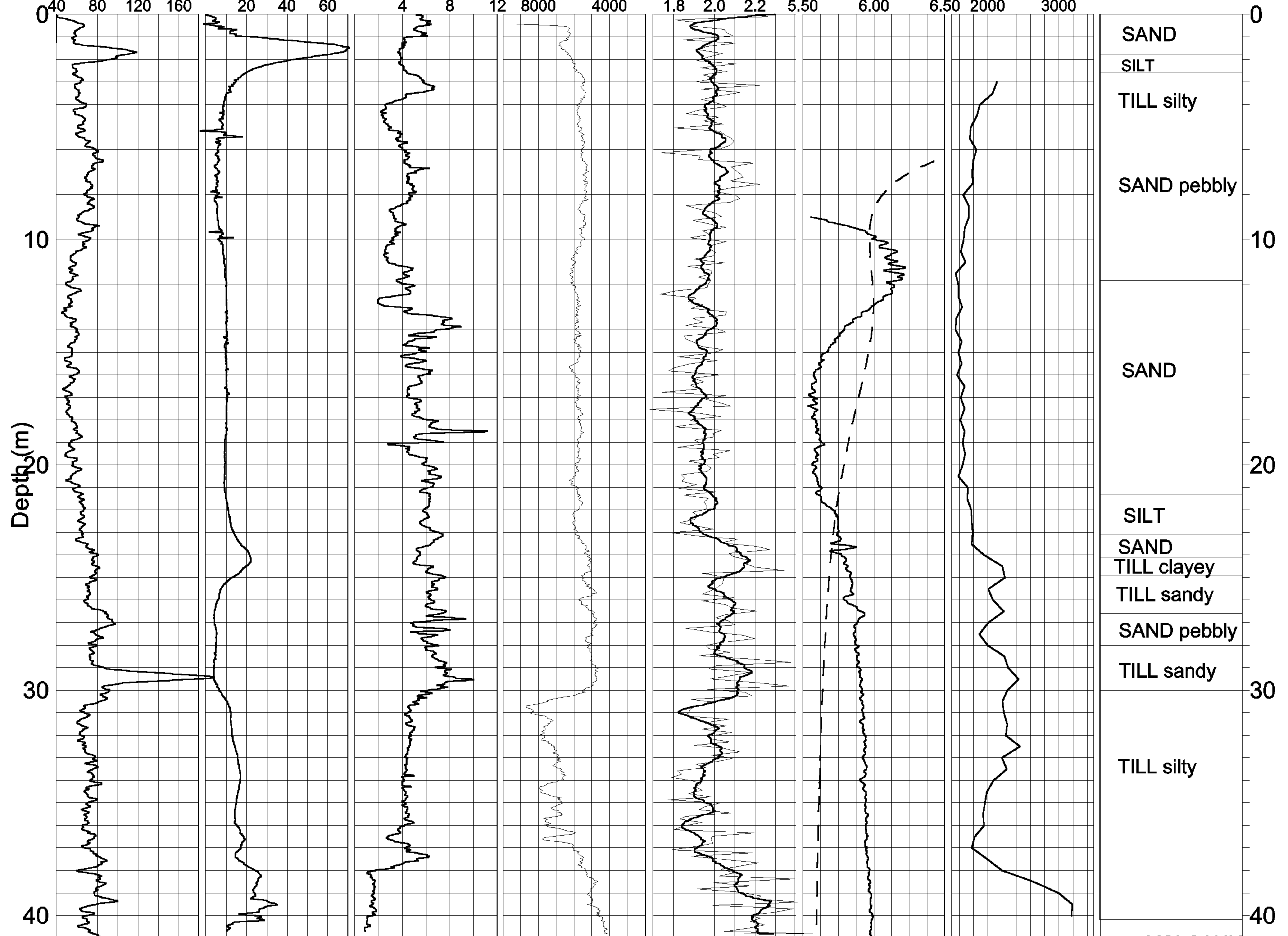
Rel. Density\*  
DENSITY INCREASING

Spectral Density  
Ratio\*\*

Temp (deg. C)

P-wave Velocity  
( m/sec)

Driller's Log



\*COUNT(50-800keV) 5% SMOOTHING

\*\*((340-800)/(75-125)keV

Grad.(C deg./km)

meta-VOLCANIC  
J99M.GRF