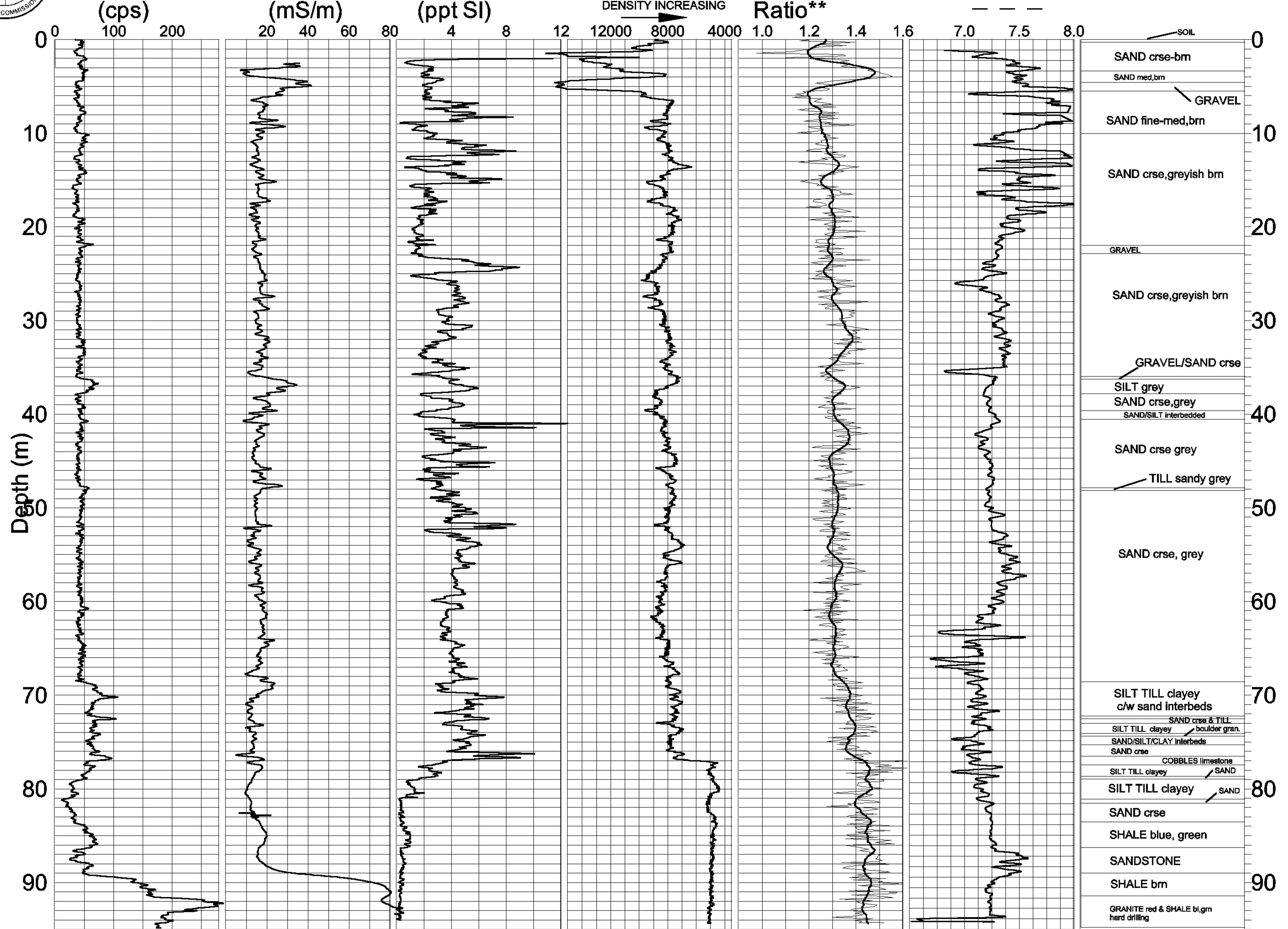




Natural Gamma (cps) Conductivity (mS/m) Magnetic Susc. (ppt SI) Rel. Density* Spectral Density Ratio** Temp (deg. C)

Driller's Log



*COUNT(50-800keV) 5 % SMOOTHING

** $(350-800)/(75-140)$ keV

-60 -40 -20 0 20 40 60
Grad.(C deg./km)

GS9902-M.GRF