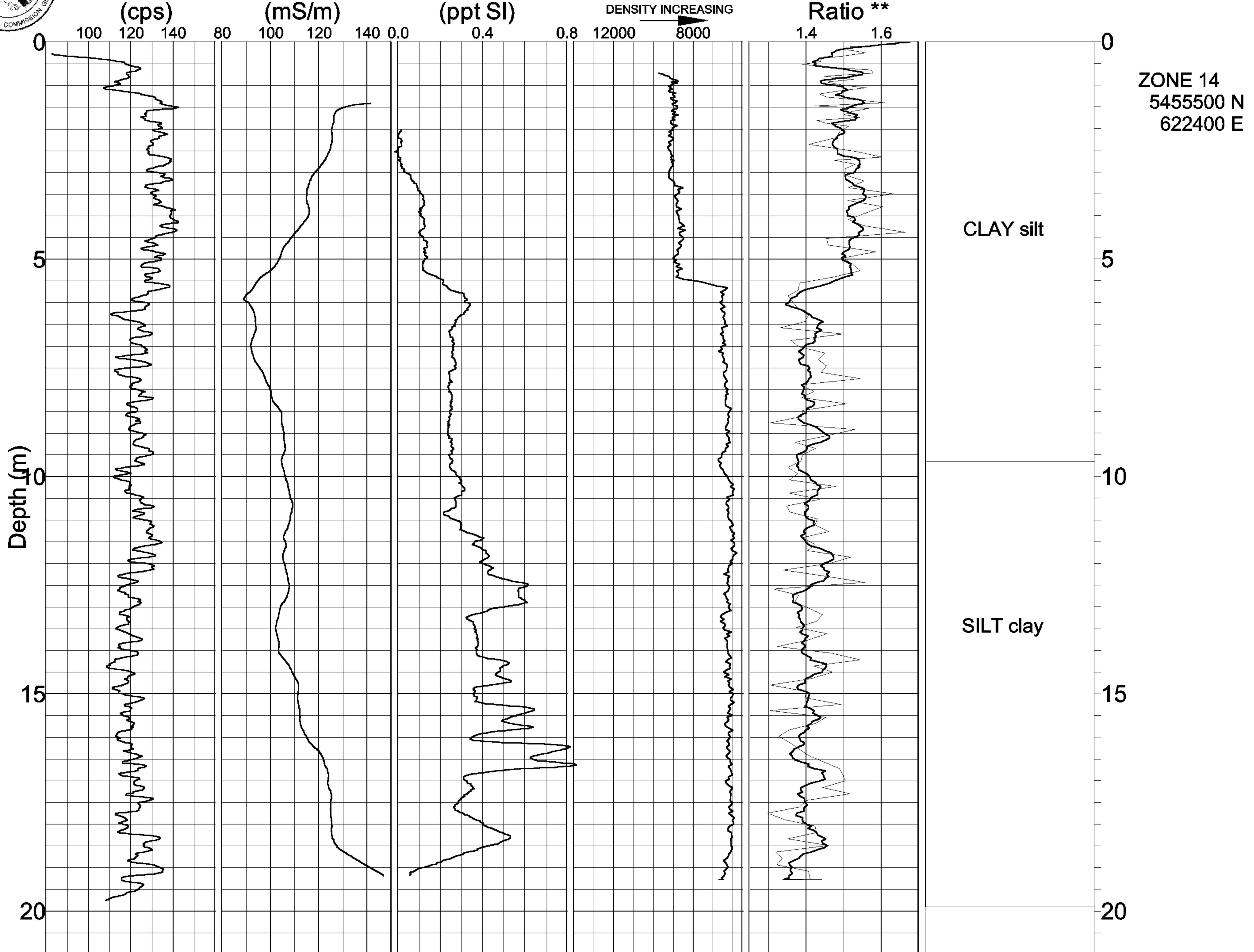




# GEOLOGICAL SURVEY OF CANADA BOREHOLE: 99RR1E

Natural Gamma Conductivity    Magnetic Susc.    Rel. Density\*    Spectral Density    Driller's Log



\*COUNT(50-800keV)    5 % SMOOTHING  
 \*\*((325-800)/(95-140)keV)