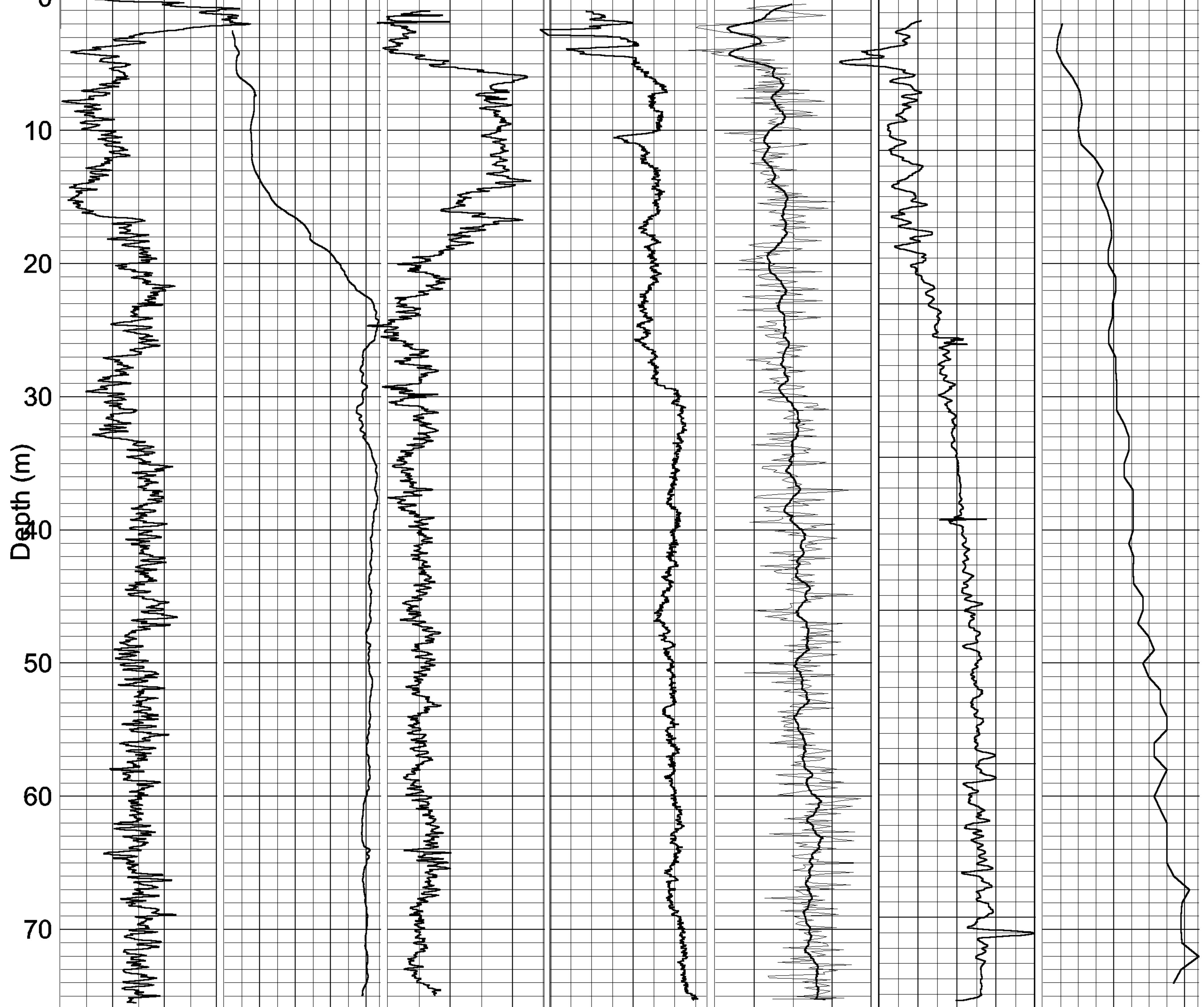




# GEOLOGICAL SURVEY OF CANADA

# BOREHOLE : FD98-1

Natural Gamma (cps)    Conductivity (mS/m)    Magnetic Susc. (ppt SI)    Rel. Density\*    Spectral Density Ratio\*\*    Temp (deg. C)    S-wave Velocity (m/sec)



ZONE 10  
 5441490 N  
 485840 E

\*COUNT(50-800keV) 5 % SMOOTHING -40 -20 0 20 40 Grad.(C deg./km) FD98-1M.GRF  
 \*\*(350-800)/(90-140)keV