



# GEOLOGICAL SURVEY OF CANADA BOREHOLE :FD94-3

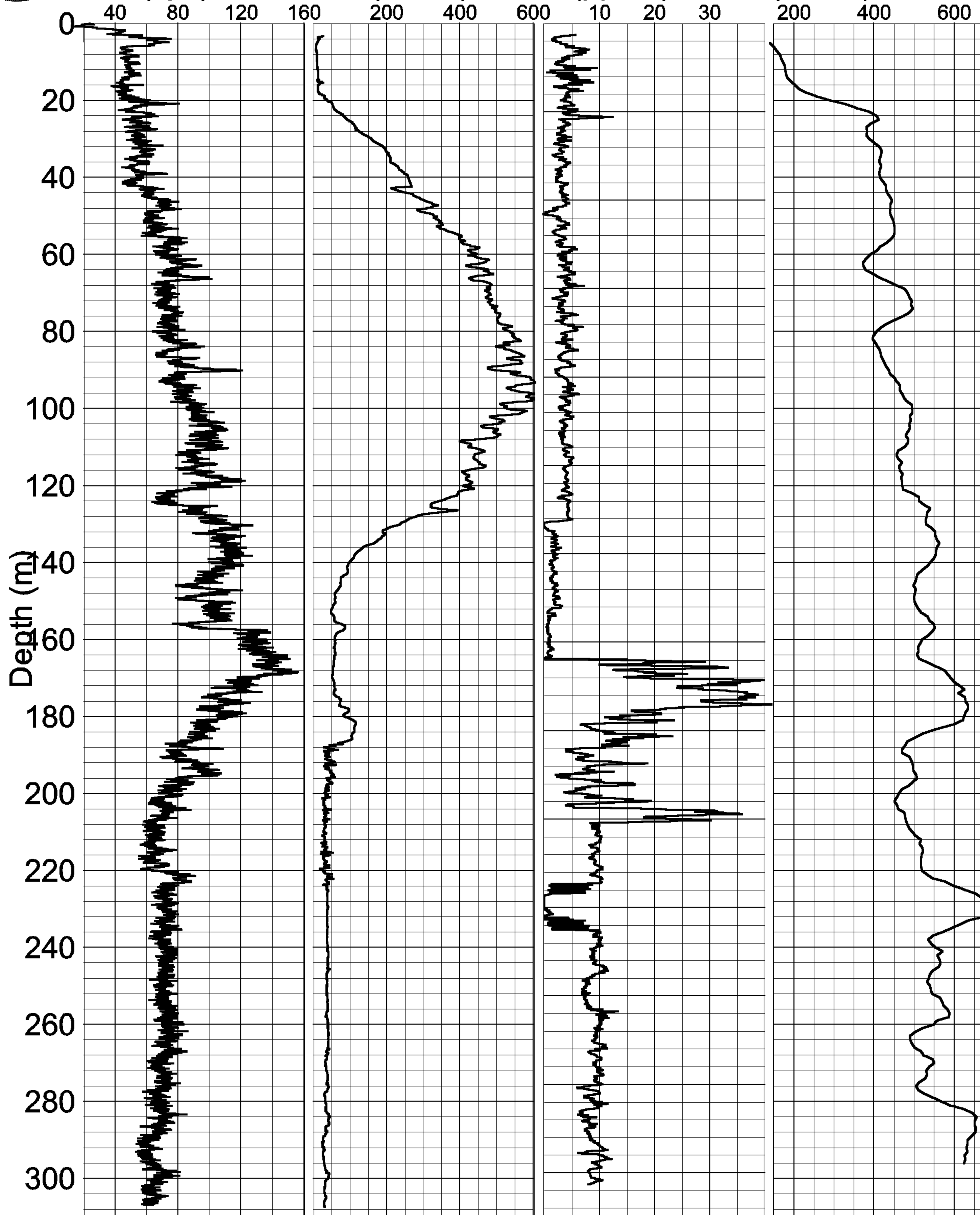
Natural Gamma Conductivity Magnetic Susc. S-Wave Velocity Driller's Log

(cps)

(mS/m)

(ppt SI)

(m/sec)



0 ZONE 10  
5446300 N  
495940 E

SAND	0 - 20
faintly laminated to massive fine sand and silt random wood fragments	
sand faintly parallel lam.	20 - 35
SAND med. well sorted sand granule & pebble bands	35 - 40
SAND silty	40 - 50
SAND fine to v. fine distinct silt interbeds	50 - 60
SAND silty	60 - 70
SAND	70 - 80
faintly parallel laminated fine with silty interbeds silt is bioturbated	80 - 100
SAND parallel lam. fine C/W thick interbeds of lam. & bioturbated silt & silty clay	100 - 110
CLAY silty	110 - 120
SAND	120 - 130
SAND silty, interbed. contorted lam. bioturbated clayey silt	130 - 140
CLAY silty burrow mottled to homogenized silty clay	140 - 150
SAND v.f. rare silt/clay interbed	150 - 160
CLAY	160 - 170
silty contorted and lam. shot with sand stringers	170 - 180
CLAY silty	180 - 190
massive to lam. v. fine sand interbeds scattered shells, some burrowing, friable	190 - 200
SAND	200 - 210
massive fine, rare silty clay laminae scattered rip-up clasts	210 - 220
CLAY	220 - 230
silty burrow-mottled to homogenized, some silty clay interbeds faintly lam. to massive	230 - 240
SAND v.f./silty, lam. to thin bed.	240 - 250
CLAY silty extensively burrow-mottled	250 - 260
SAND v.f. to fine, faintly bed.	260 - 270
CLAY silty, bioturbated interbed	270 - 280
SAND	280 - 290
	290 - 300