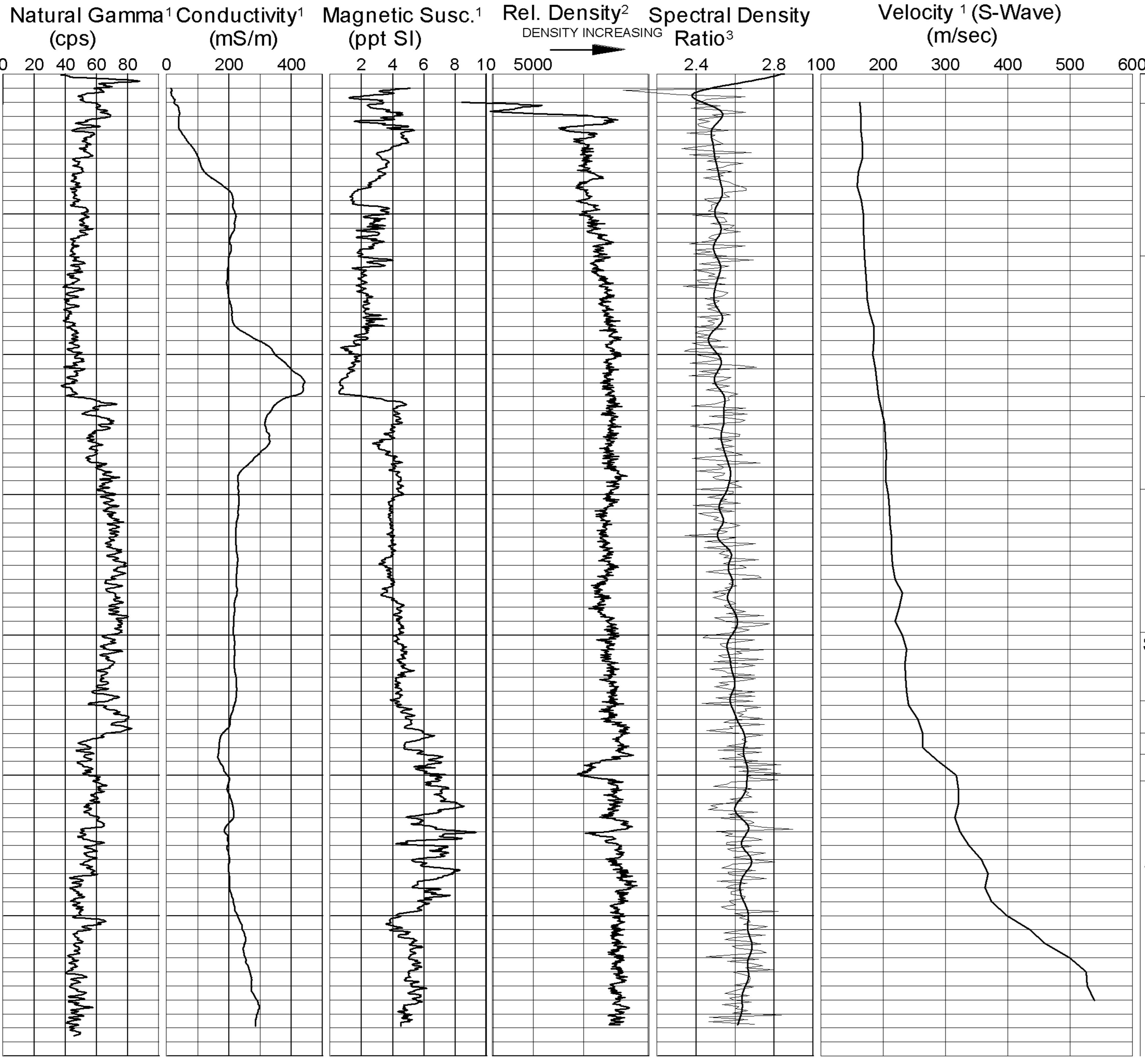


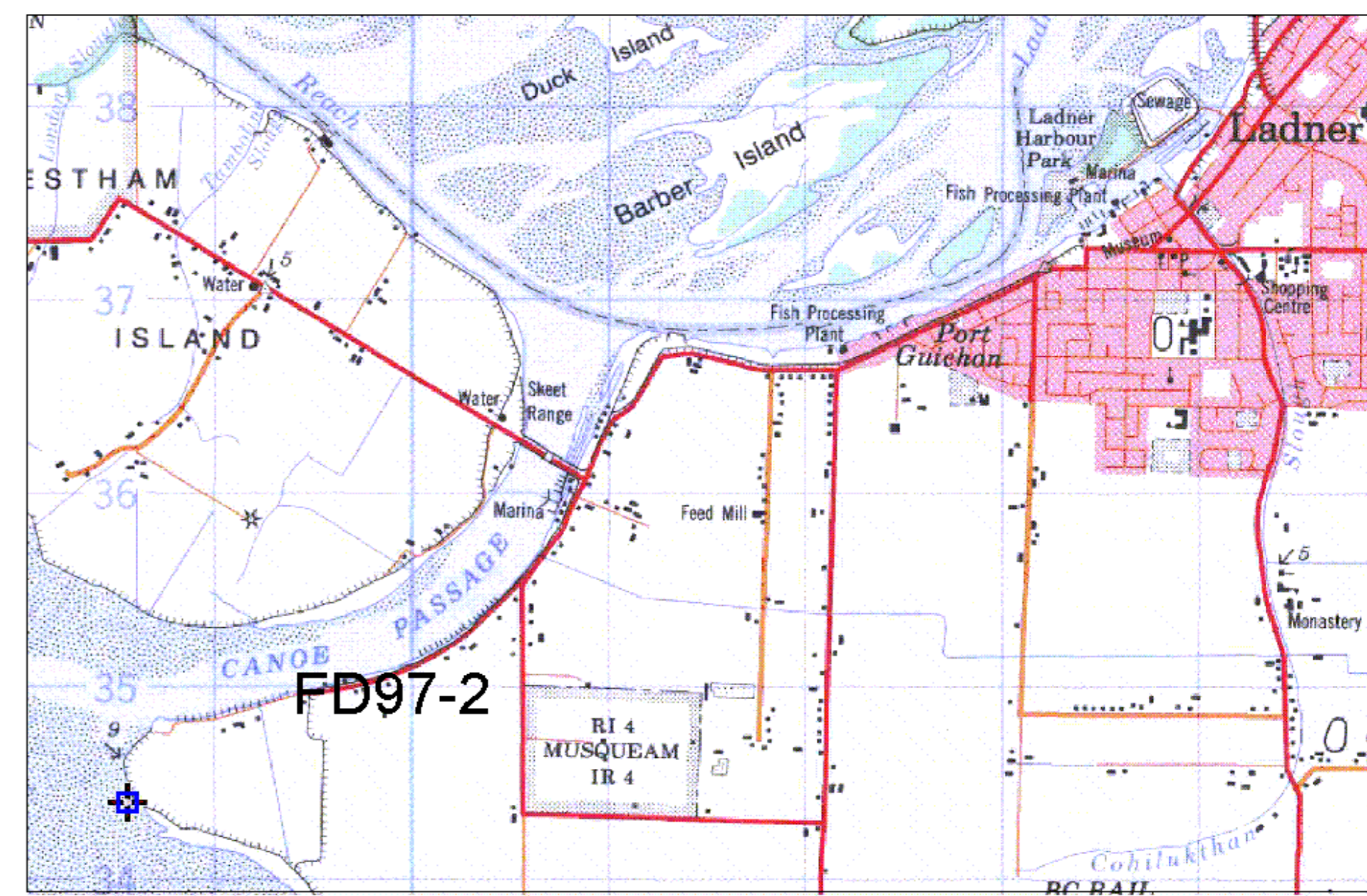
GEOLOGICAL SURVEY OF CANADA


BOREHOLE : FD97-2



Driller's Log

SAND loose silty fill
SAND loose micaceous to med and silty
SAND compact micaceous fine to medium
SAND loose to compact fine silty interlayered with/SILT fine sandy
SILT firm non-plastic thinly layered with sandy **SILT**
SAND loose - compact fine silty interlayered with fine sandy / **SILT**
SILT firm sandy
SAND compact silty
SILT firm sandy
GRAVEL dense / **COBBLES**(till)
CLAY hard gritty with thick dense sand layers



 GEOLOGICAL SURVEY OF CANADA	
BOREHOLE: FD97-2 (Brunswick Point)	
PROJECT: Earthquake Hazards Fraser River Delta	
MAP SHEET 92 G/3	LOCATION: Z 10 0488560 E NAD27 5434420 N
DEPTH: 68 m	
CASING: PLASTIC 3"	
WATER TABLE: n/a	
OPER: R. GOOD / R.BURNS	
LOGGING DATE: 24/09/97	
FILE: FD97-2ML.GRF	
NOTES: 1. 3" PVC CASING 2. COUNT (200-1000 keV) 3. (200-1000)/(50-150)keV	