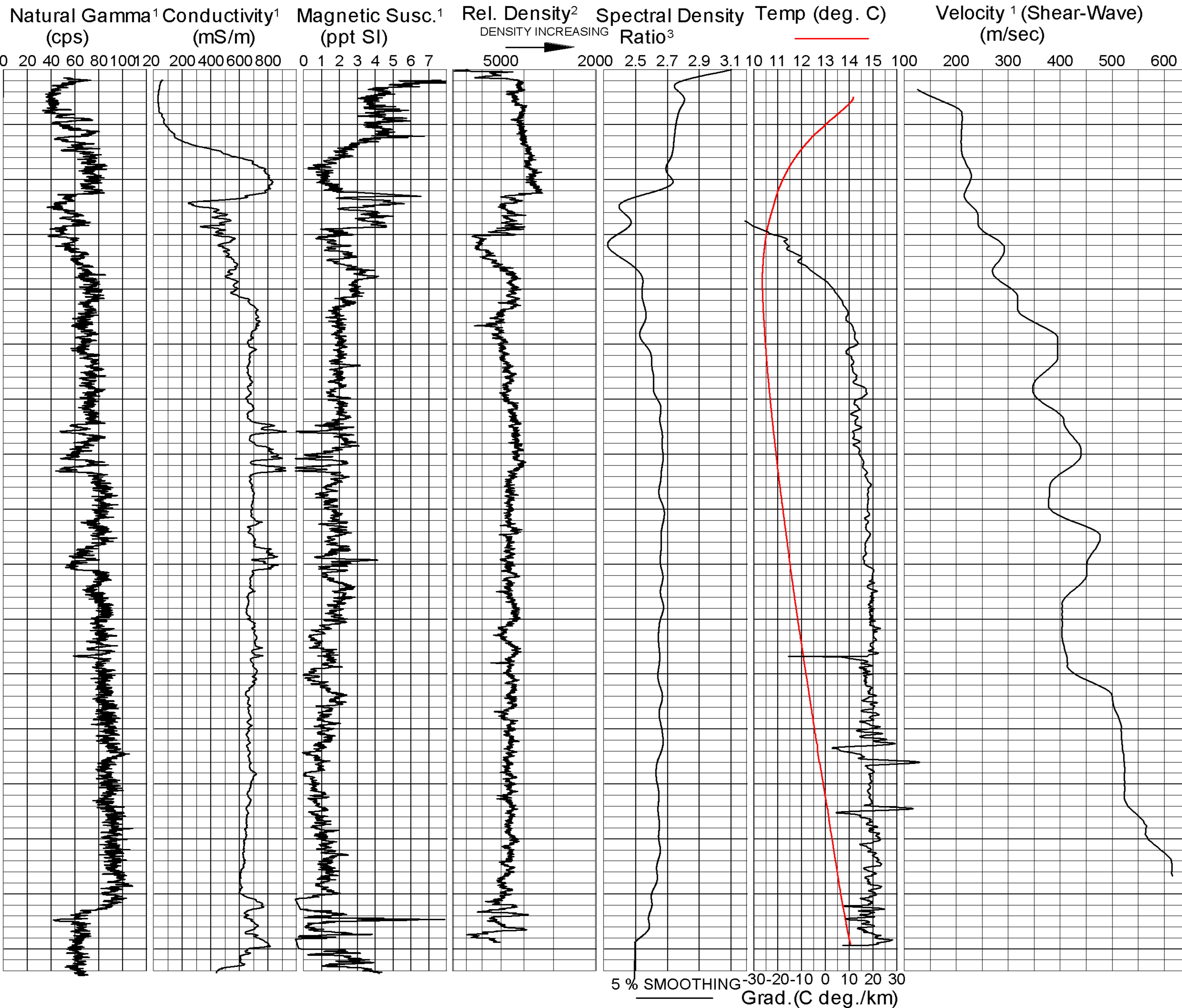


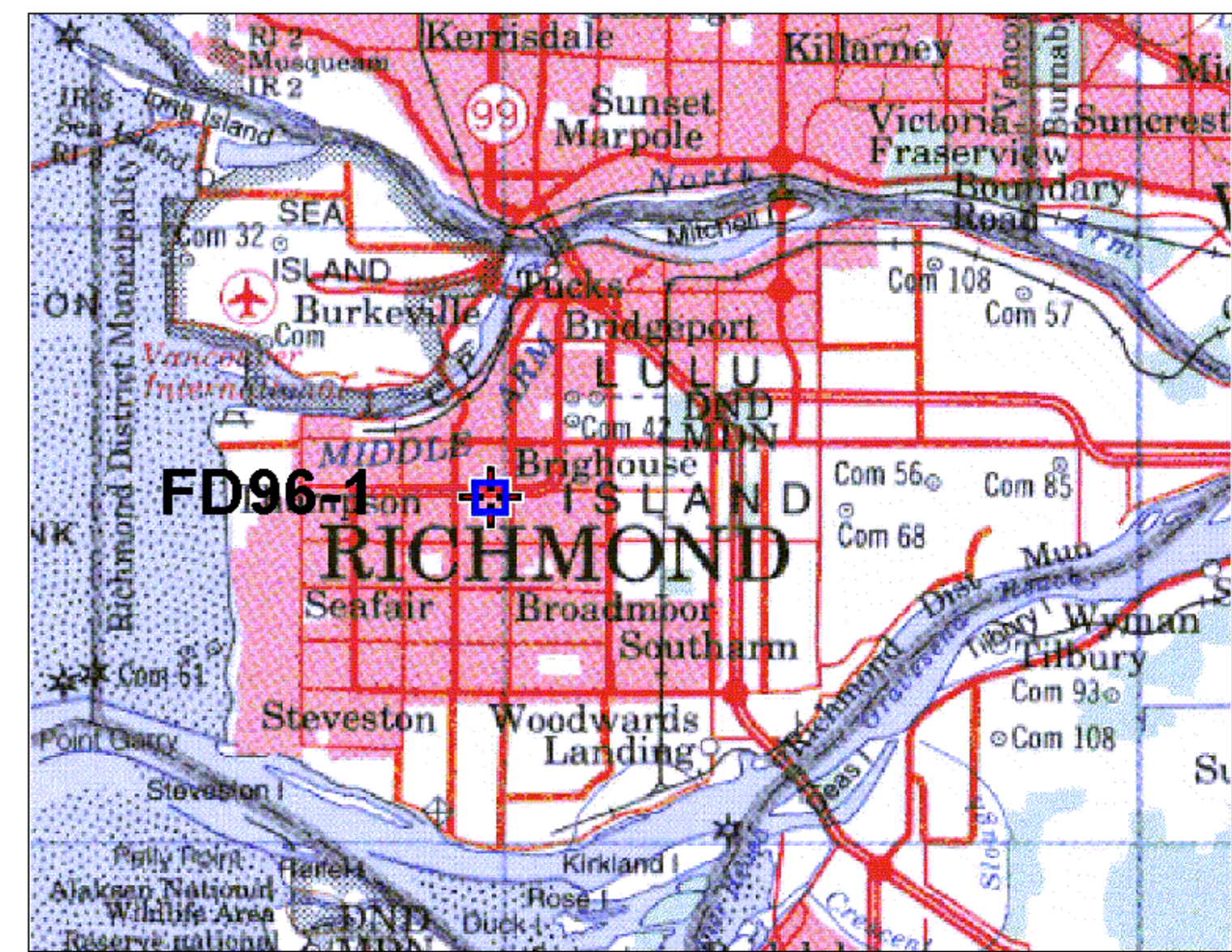
GEOLOGICAL SURVEY OF CANADA

BOREHOLE : FD96-1



Driller's Log

SAND fine to med. well to poorly sorted massive inter laminated SAND & SILT
SILT sandy, clayey /
SAND fine, mod. sorted inter laminated & interbedded
SILT weakly laminated to thin bedded bioturbated
SAND silty v.f., poorly sort. / **SILT** clayey lam., rythm.
SILT sandy / **SILT** clayey massive, bioturbated, weakly lam., & interbed, are beds of / **SAND** silty f., to v. fine poorly sorted
SILT clayey, massive bioturbated, rare intervals of / **SILT** clayey lam., occasional beds / **SAND** silty, f. to v.f.
SAND silty, v.f. to fine poorly to well sorted inter laminated
SILT clayey massive bioturbated, rare intervals of / **SILT** clayey lam. occasional bed of / **SAND** silty f. to v. fine
SILT clayey massive, scattered granules & pebbles
SILT clayey, distinctive couplets
DIAMICTON clayey, sandy silty, massive, 20% grit scattered clasts



GEOLOGICAL SURVEY OF CANADA

BOREHOLE: FD96-1 (City Hall)

PROJECT: Earthquake Hazards Fraser River Delta

MAP SHEET 92 G2 **LOCATION:** Z 10 0489949 E
 WGS84 5445687 N

DEPTH: 328 m

CASING: PLASTIC 3"

WATER TABLE: near surface

OPER: R. GOOD / R. BURNS / J.A. HUNTER

LOGGING DATE: 23 /02 /1995

FILE: FD96-1ML.GRF

NOTES: 1. 3" PVC CASING
 2. COUNT (200-1000 keV)
 3. (200-1000)/(50-150) keV