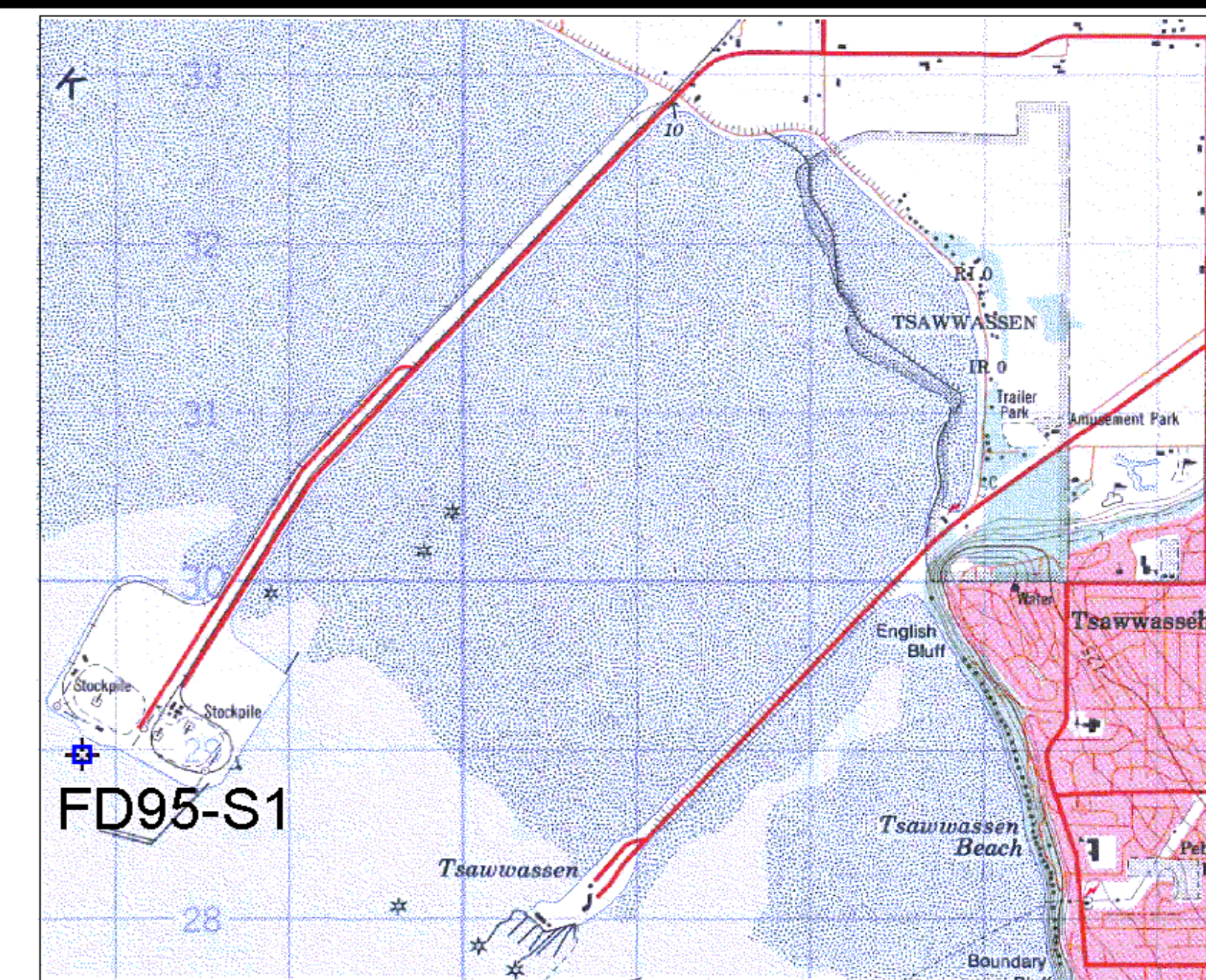
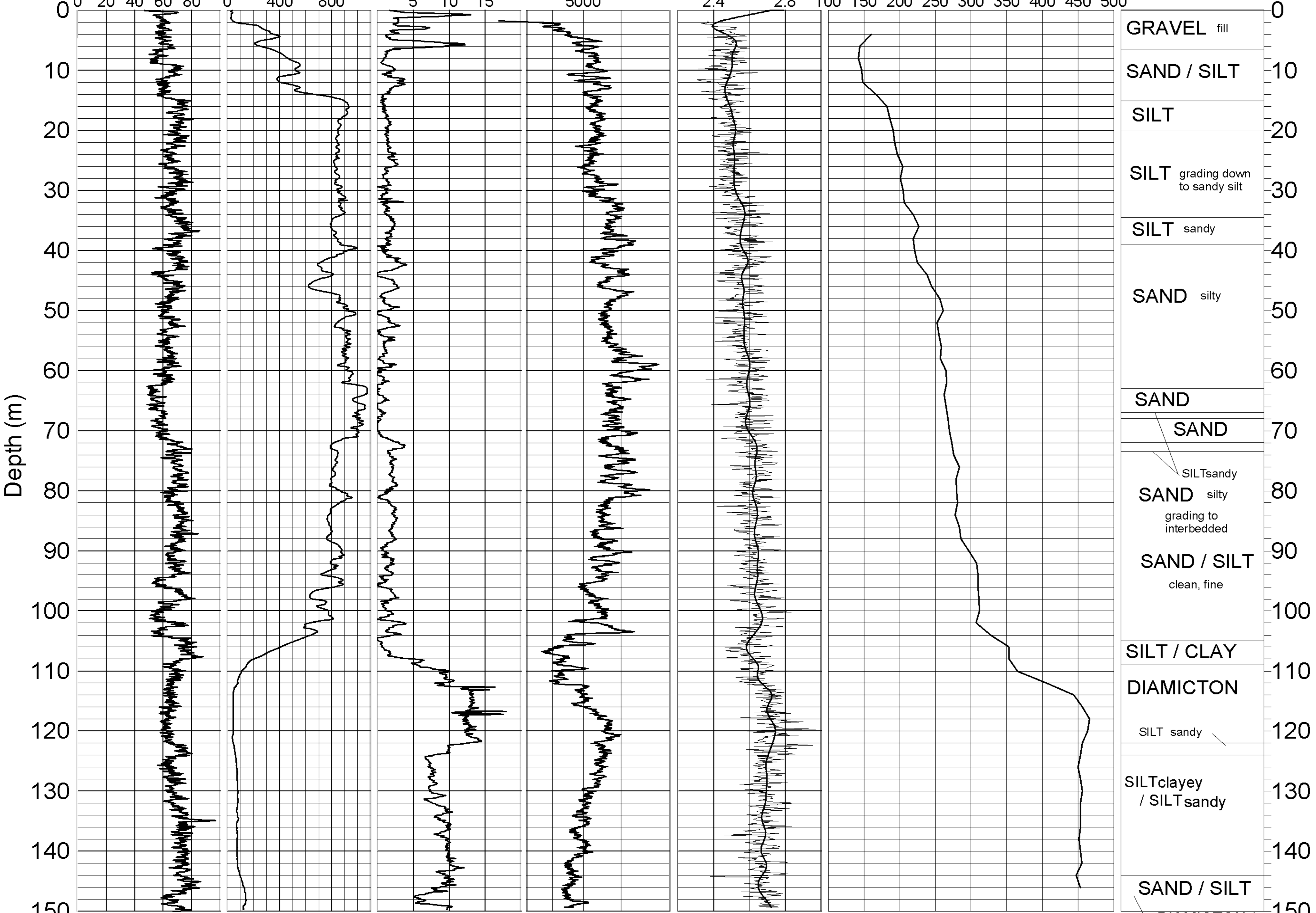


GEOLOGICAL SURVEY OF CANADA

BOREHOLE : FD95-S1




Natural Gamma¹ Conductivity¹ Magnetic Susc.¹ Rel. Density² Spectral Density Velocity¹ (Shear Wave) Driller's Log
 (cps) (mS/m) (ppt SI) DENSITY INCREASING Ratio³ (m/sec)



5 % SMOOTHING

GRAVEL fill	0
SAND / SILT	10
SILT	20
SILT grading down to sandy silt	30
SILT sandy	40
SAND silty	50
SAND	60
SAND	70
SILT sandy	80
SAND silty grading to interbedded	80
SAND / SILT clean, fine	90
SILT / CLAY	110
DIAMICTON	110
SILT sandy	120
SILT clayey / SILT sandy	130
SAND / SILT	140
DIAMICTON / CLAY SHALE	150



GEOLOGICAL SURVEY OF CANADA

BOREHOLE: FD95-S1 (Coal Port)

PROJECT: Earthquake Hazards Fraser River Delta

MAP SHEET 92 G2 LOCATION: Z 10 0487716 E WGS84 5429197 N

DEPTH: 150 m

CASING: PLASTIC 3"

WATER TABLE: n/a

OPER: R. GOOD / R. BURNS

LOGGING DATE: 23/09/97

FILE: FD95-S1ML.GRF

NOTES: 1. 3" PVC CASING
 2. COUNT (200-1000 keV)
 3. (200-1000)/(50-150)keV