

# GEOLOGICAL SURVEY OF CANADA

# BOREHOLE : F95-6

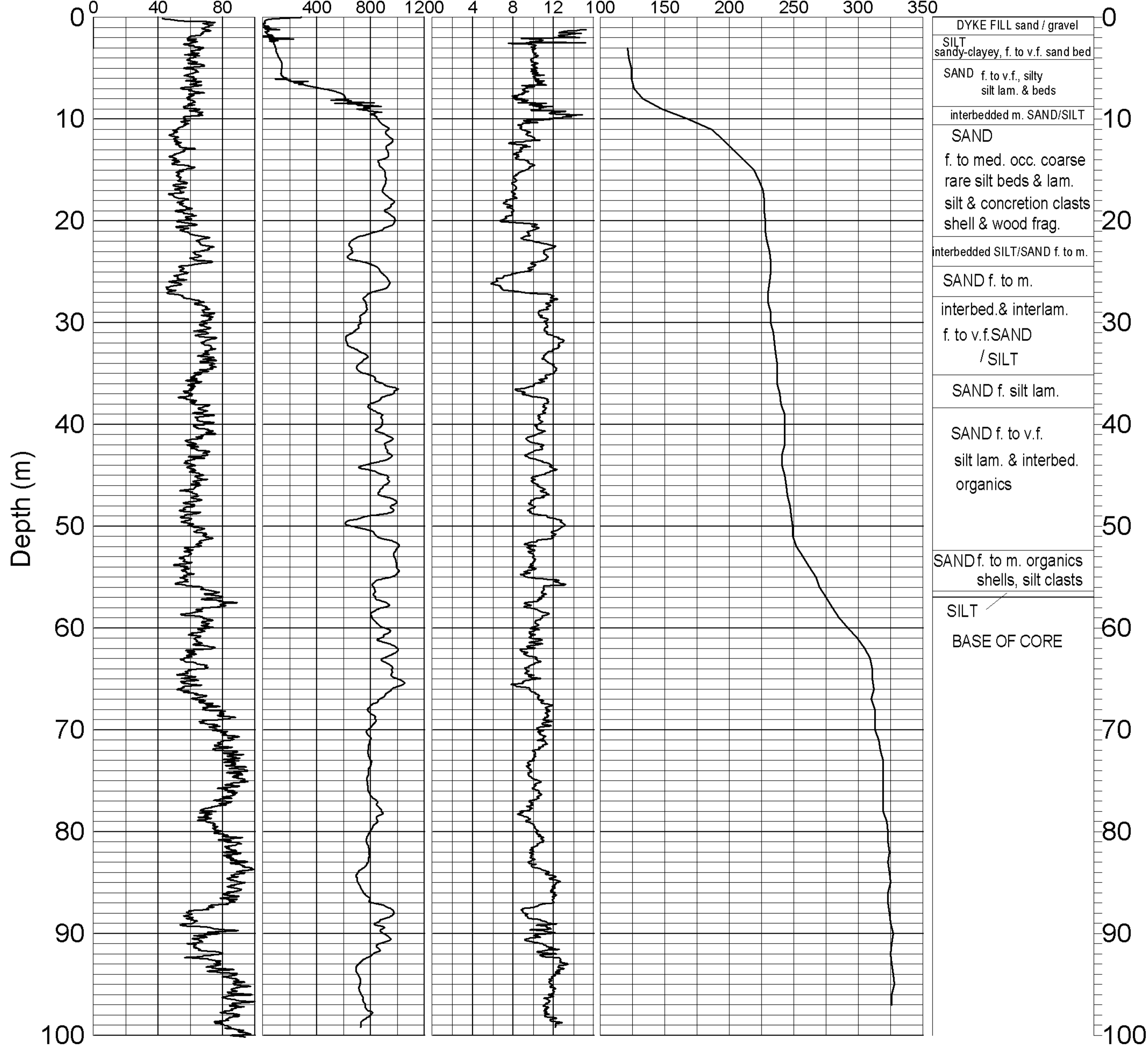
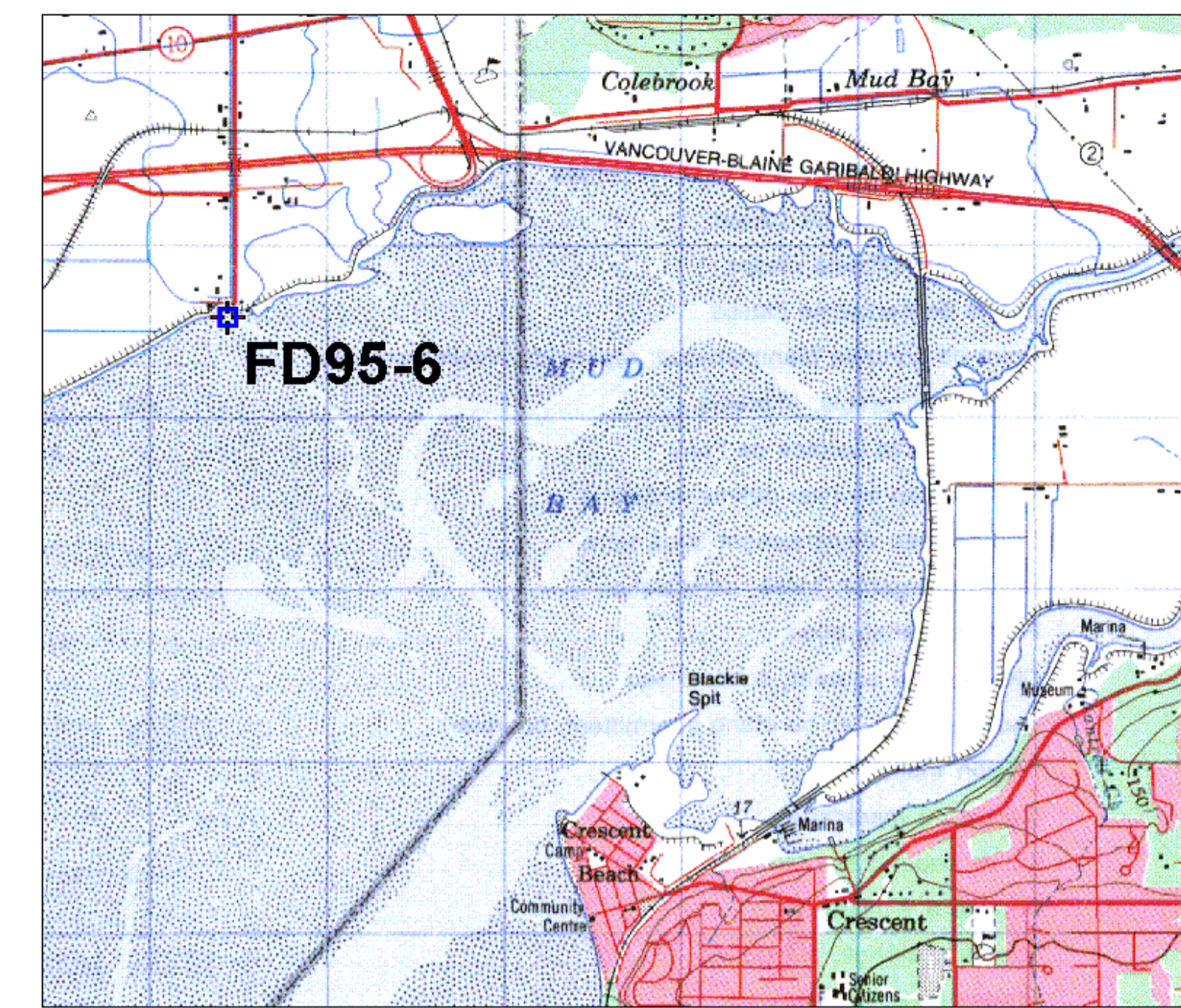
Natural Gamma<sup>1</sup>  
(cps)

Conductivity<sup>1</sup>  
(mS/m)


Magnetic Susc.<sup>1</sup>  
(ppt SI)

Velocity <sup>1</sup> (Shear Wave)  
(m/sec)

Driller's Log



DYKE FILL sand / gravel  
 SILT sandy-clayey, f. to v.f. sand bed  
 SAND f. to v.f., silty silt lam. & beds  
 interbedded m. SAND/SILT SAND  
 f. to med. occ. coarse rare silt beds & lam. silt & concretion clasts shell & wood frag.  
 interbedded SILT/SAND f. to m.  
 SAND f. to m.  
 interbed. & interlam. f. to v.f. SAND /SILT  
 SAND f. silt lam.  
 SAND f. to v.f. silt lam. & interbed. organics  
 SAND f. to m. organics shells, silt clasts  
 SILT  
 BASE OF CORE

	GEOLOGICAL SURVEY OF CANADA	
	BOREHOLE: FD95-6 n. shore Mud Bay	
PROJECT: Earthquake Hazards Fraser River Delta		
MAP SHEET 92 G2	LOCATION: Z 10 0506356 E WGS84 5436787 N	
DEPTH: 100 m		
CASING: PLASTIC 3"		
WATER TABLE: n/a		
OPER: R. GOOD / R. BURNS / J.A. HUNTER		
LOGGING DATE: 1995		
FILE: FD95-6ML.GRF		
NOTES: 1. 3" PVC CASING		