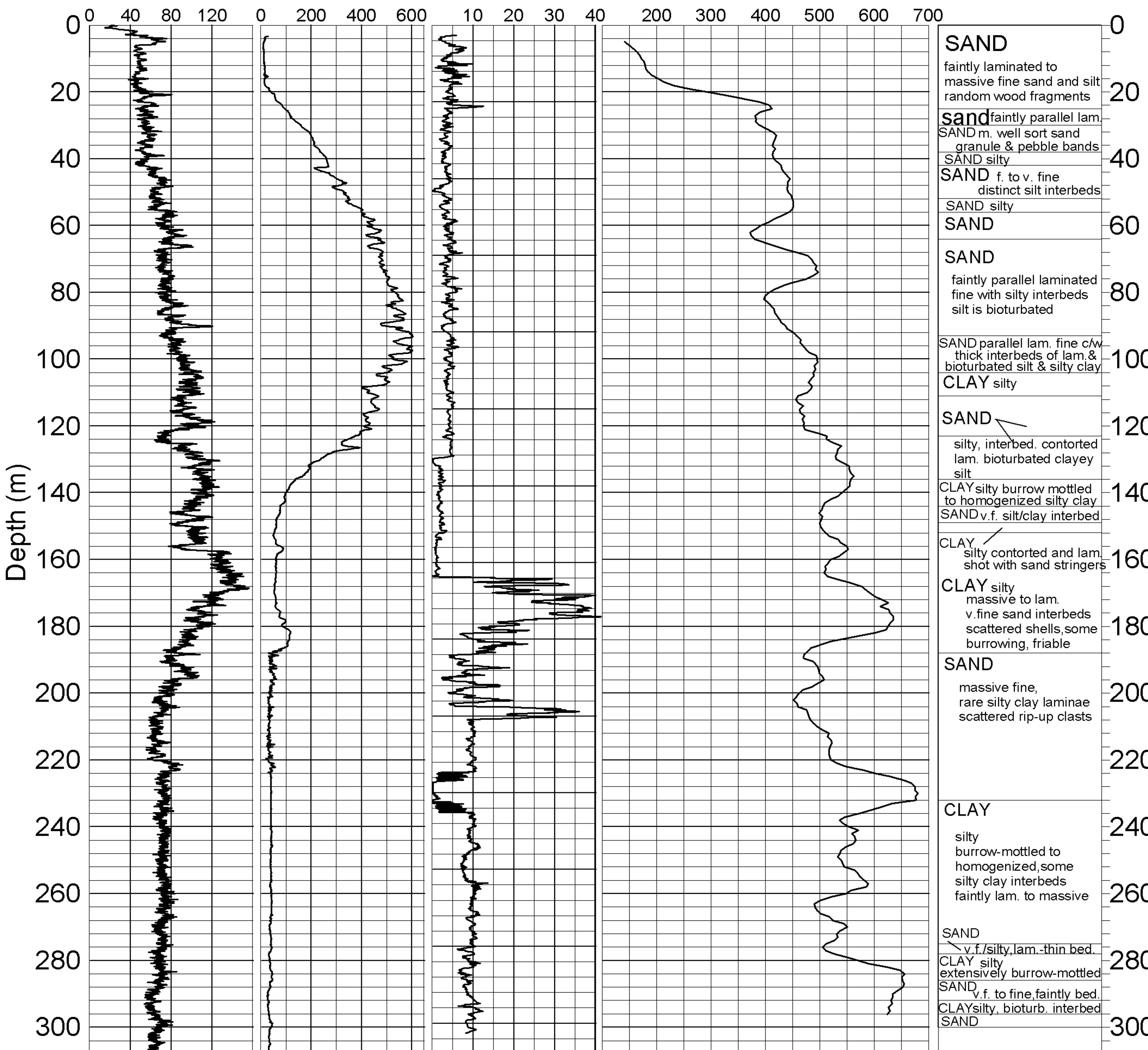
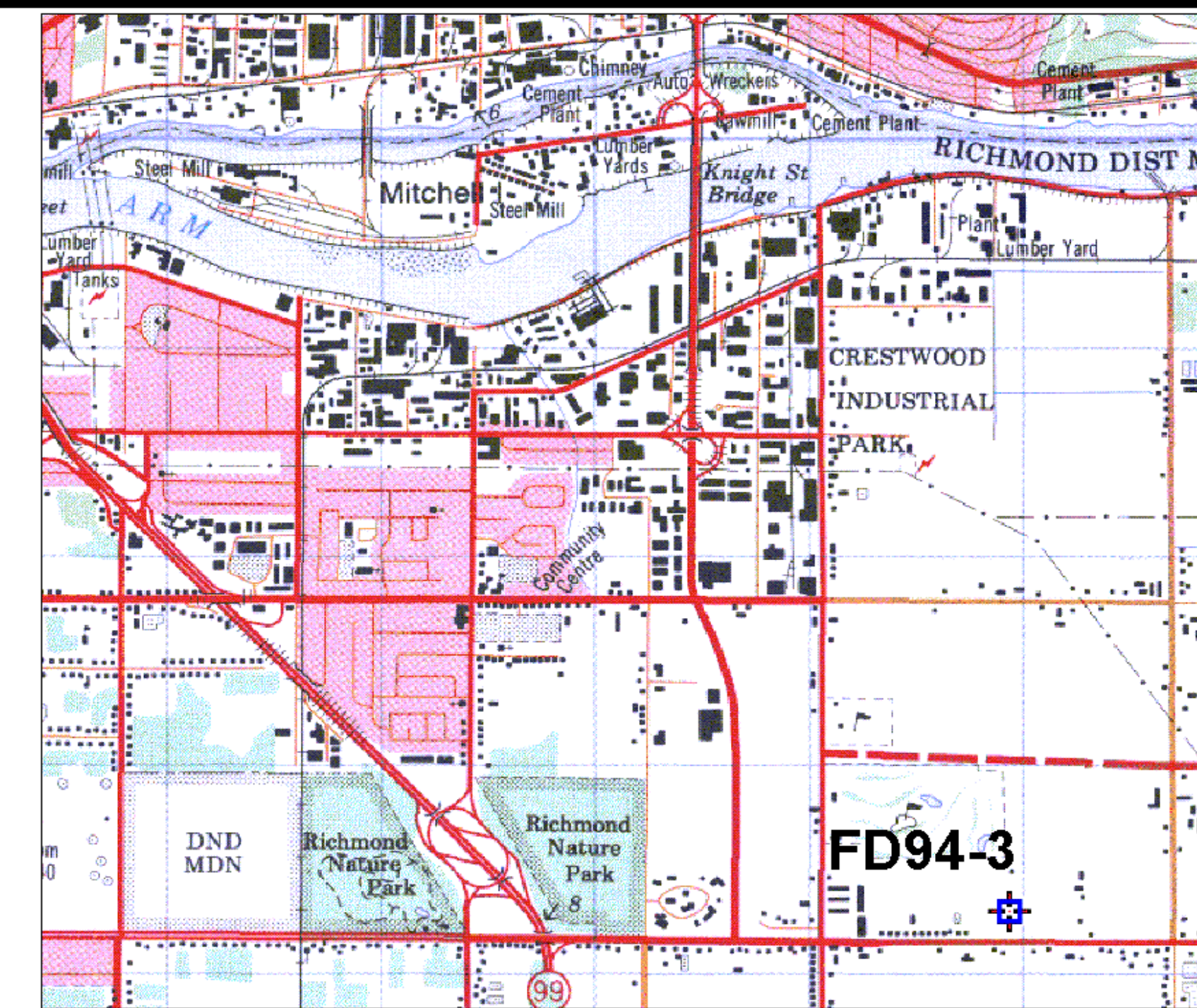


Natural Gamma<sup>1</sup> Conductivity<sup>1</sup>  
(cps)

Magnetic Susc.<sup>1</sup>  
(ppt SI)

Velocity <sup>1</sup> (Shear Wave)  
(m/sec)

Driller's Log



**SAND**  
faintly laminated to massive fine sand and silt random wood fragments

**sand** faintly parallel lam.  
SAND m. well sort sand granule & pebble bands  
SAND silty

**SAND** f. to v. fine distinct silt interbeds

**SAND** silty

**SAND**

**SAND**  
faintly parallel laminated fine with silty interbeds silt is bioturbated

**SAND** parallel lam. fine c/w thick interbeds of lam. & bioturbated silt & silty clay

**CLAY** silty

**SAND**  
silty, interbed. contorted lam. bioturbated clayey silt

**CLAY** silty burrow mottled to homogenized silty clay  
**SAND** v.f. silt/clay interbed

**CLAY**  
silty contorted and lam. shot with sand stringers

**CLAY** silty massive to lam. v. fine sand interbeds scattered shells, some burrowing, friable

**SAND**  
massive fine, rare silty clay laminae scattered rip-up clasts

**CLAY**  
silty burrow-mottled to homogenized, some silty clay interbeds faintly lam. to massive


**SAND**  
v.f. / silty, lam. - thin bed.

**CLAY** silty extensively burrow-mottled

**SAND**  
v.f. to fine, faintly bed.

**CLAY** silty, bioturb. interbed

**SAND**

 **GEOLOGICAL SURVEY OF CANADA**

**BOREHOLE: FD94-3** MOT site  
between 6 & 7 rd

**PROJECT: Earthquake Hazards Fraser River Delta**

**MAP SHEET 92 G2** **LOCATION: Z 10 0495846 E WGS84 5446497 N**

**DEPTH: 307 m**

**CASING: PLASTIC 3"**

**WATER TABLE: n/a**

**OPER: R. GOOD / R. BURNS / J.A. HUNTER**

**LOGGING DATE: 1995**

**FILE: FD94-3ML.GRF**

**NOTES: 1. 3" PVC CASING**