

# GEOLOGICAL SURVEY OF CANADA

# BOREHOLE : FD86-5

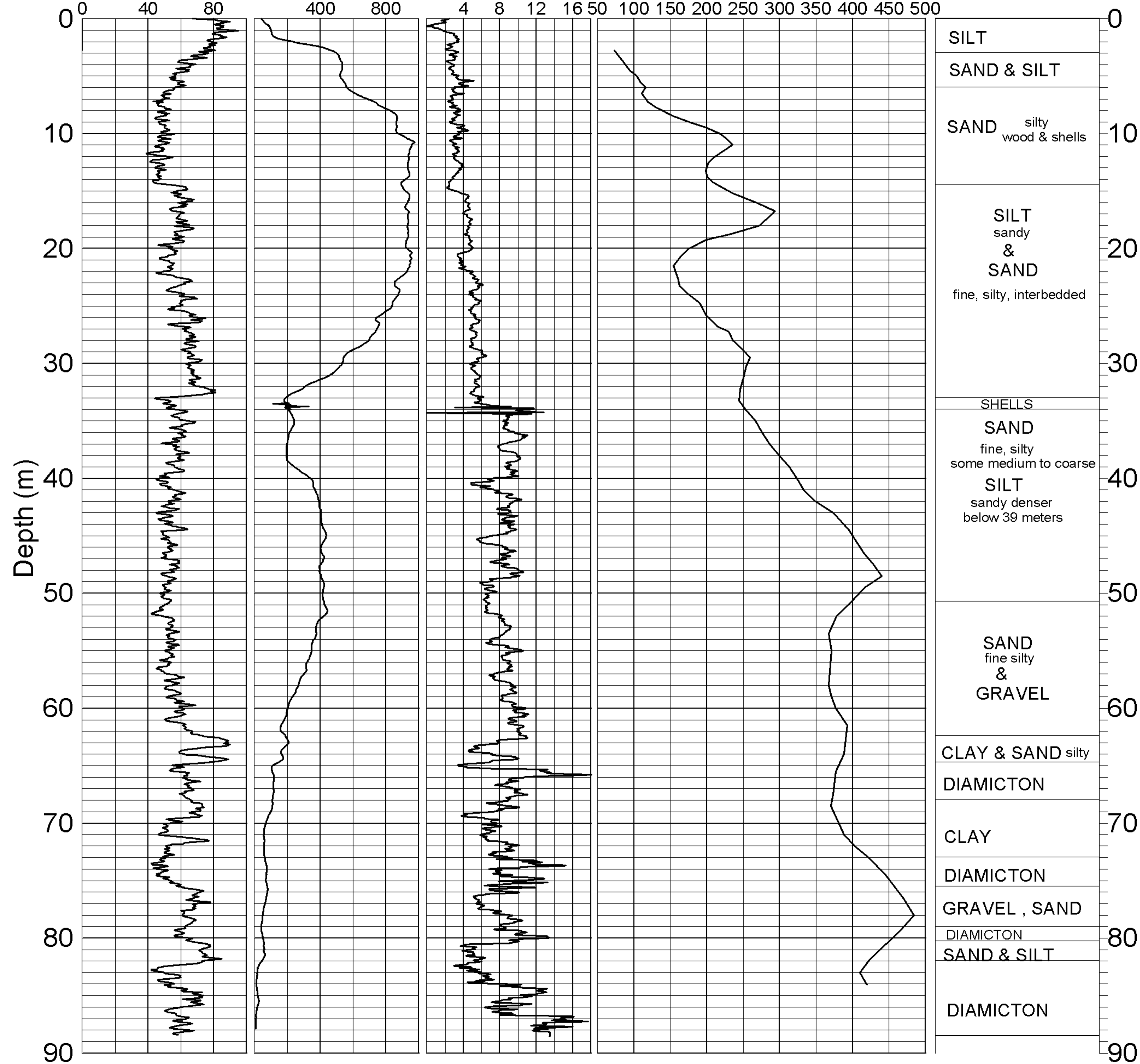
Natural Gamma<sup>1</sup>  
(cps)

Conductivity<sup>1</sup>  
(mS/m)

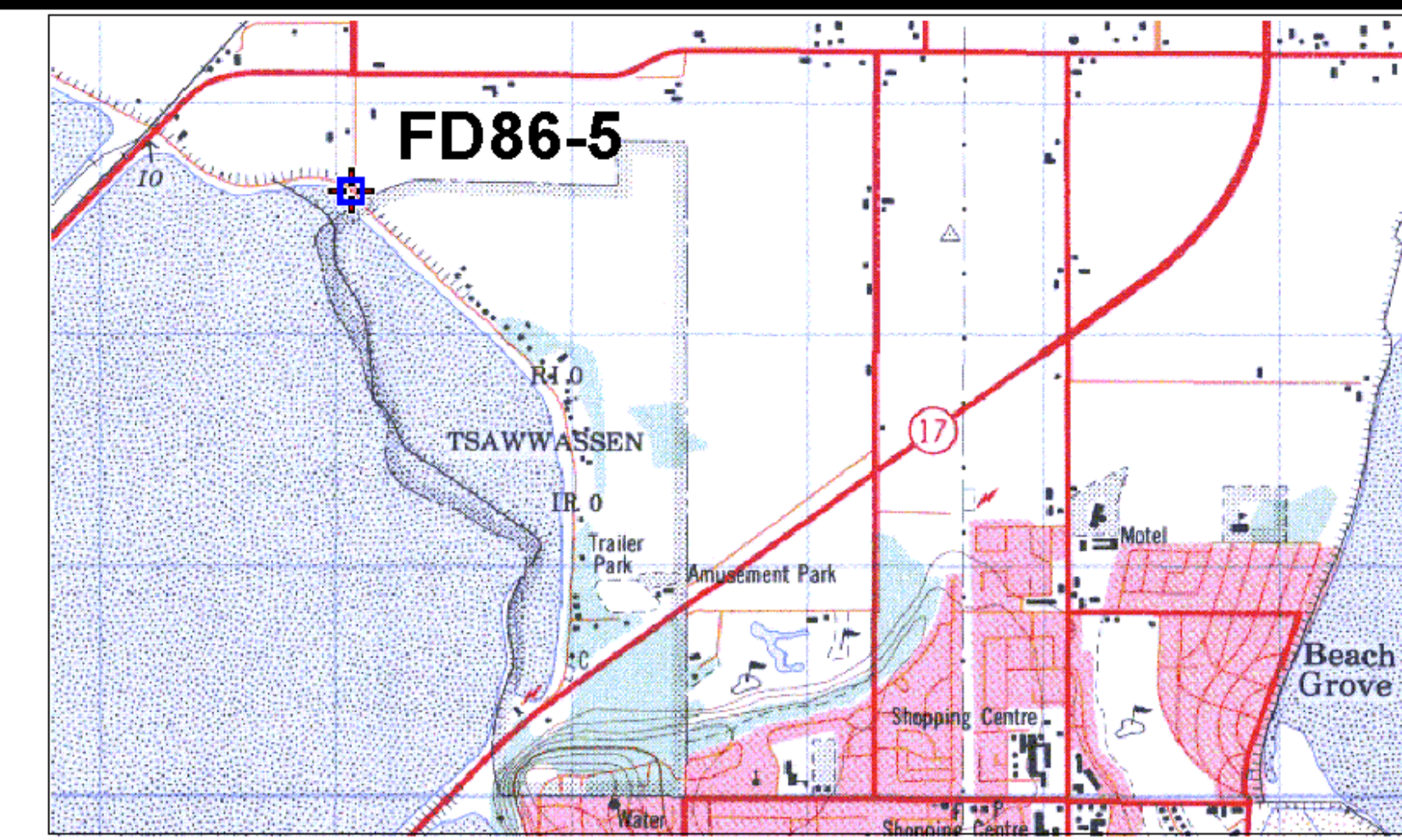
Magnetic Susc.<sup>1</sup>  
(ppt SI)


Velocity<sup>1</sup> (Shear Wave)  
(m/sec)

Driller's Log



SILT	0
SAND & SILT	
SAND silty wood & shells	10
SILT sandy & SAND fine, silty, interbedded	20
SHELLS	
SAND fine, silty some medium to coarse	40
SILT sandy denser below 39 meters	
SAND fine silty & GRAVEL	60
CLAY & SAND silty	
DIAMICTON	
CLAY	70
DIAMICTON	
GRAVEL , SAND	
DIAMICTON	80
SAND & SILT	
DIAMICTON	90



	<b>GEOLOGICAL SURVEY OF CANADA</b>
	<b>BOREHOLE: FD86-5</b> dyke by Reserve
<b>PROJECT: Earthquake Hazards Fraser River Delta</b>	
<b>MAP SHEET</b> 92 G2	<b>LOCATION:</b> Z 10 0491973 E WGS84 5432837 N
<b>DEPTH:</b> 89 m	
<b>CASING:</b> PLASTIC 3"	
<b>WATER TABLE:</b> n/a	
<b>OPER:</b> R. GOOD / R. BURNS / J.A. HUNTER	
<b>LOGGING DATE:</b> 1995	
<b>FILE:</b> FD86-5ML.GRF	
<b>NOTES:</b> 1. 3" PVC CASING	