

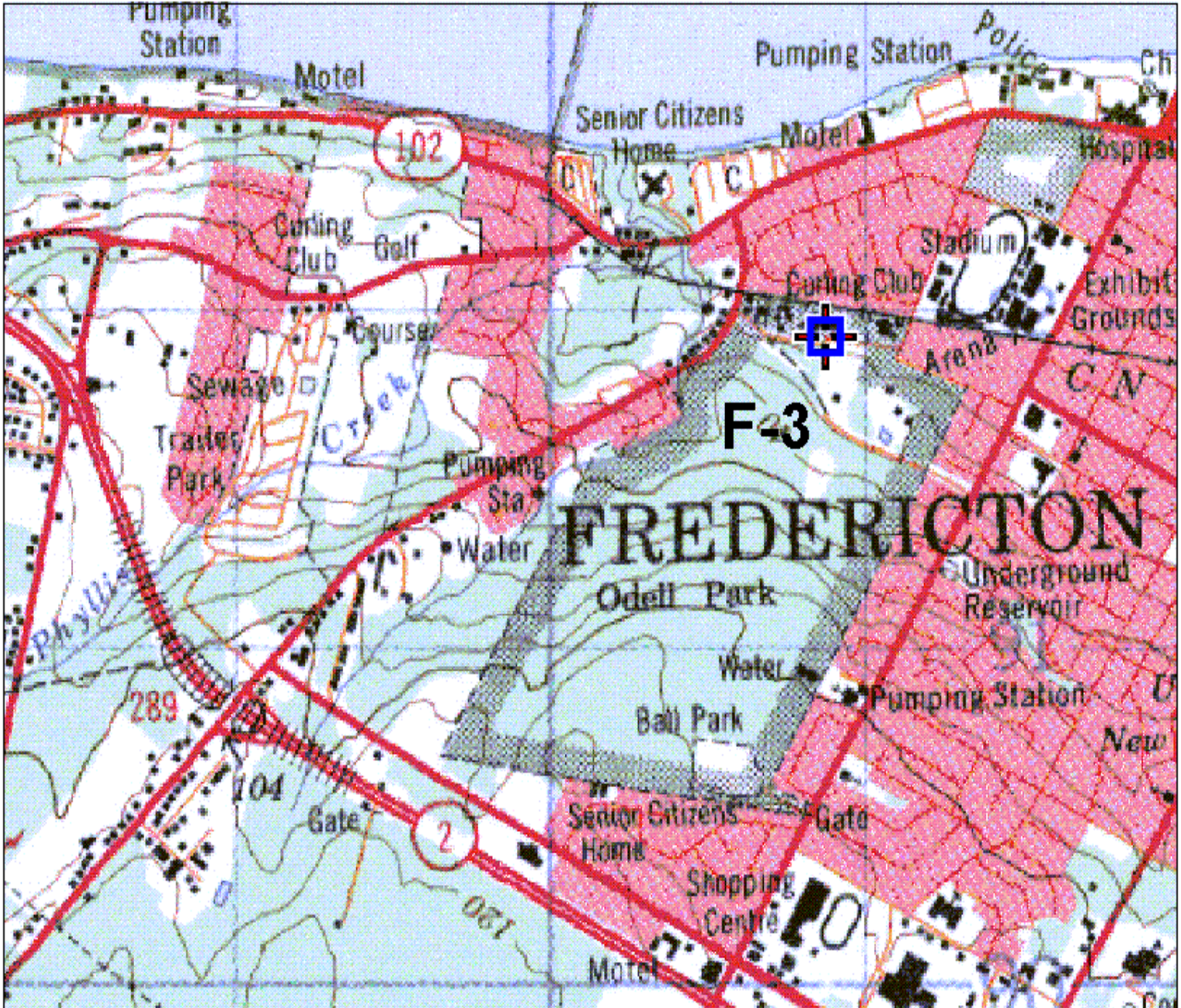
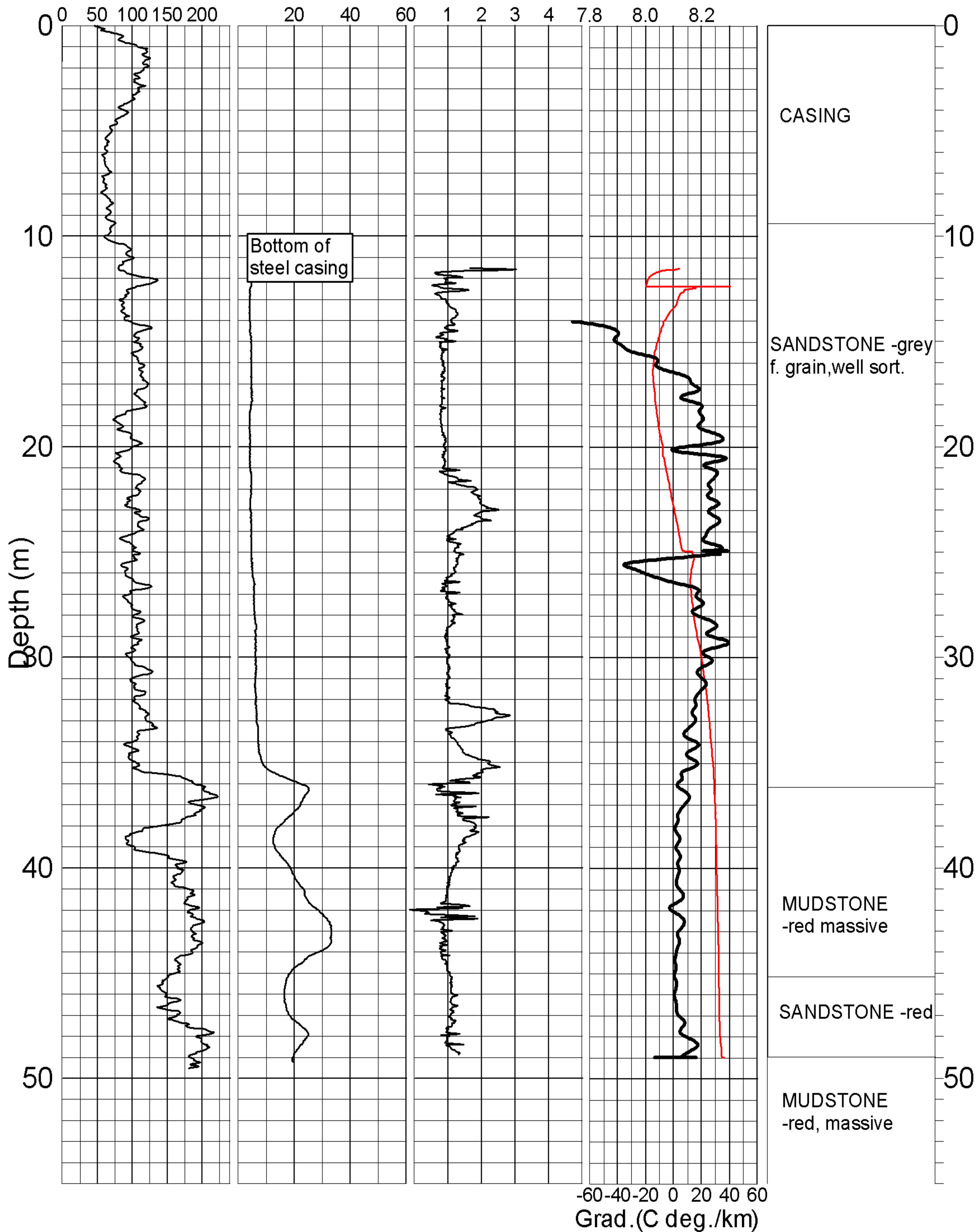


GEOLOGICAL SURVEY OF CANADA

BOREHOLE : F-3(Fract.Rx)

Natural Gamma Conductivity₁ Magnetic Susc.₁ Temp (deg. C)

Driller's Log



GEOLOGICAL SURVEY
OF CANADA

BOREHOLE: F-3
(Odell Park bottom of hill near street)

PROJECT: Collaborative Survey - GSC &
University of New Brunswick

MAP SHEET 21G 15 **LOCATION:** Z 19 680925 E
WGS84 5092116 N

DEPTH: 58 m

CASING: STEEL CASED TO 9.4 M

WATER TABLE: at surface

OPER: R. GOOD

LOGGING DATE: 10 /09 /03

FILE: F-3ML.GRF

NOTES: 1. STEEL CASING TO 9.4 M