



National Road Network

Conceptual Data Model Segmented View

Edition 2.0.1

2012-03-31

**Natural Resources Canada
Earth Sciences Sector
Centre for Topographic Information
2144, King Street West, Suite 010
Sherbrooke (Quebec) Canada
J1J 2E8**

Telephone: +01-819-564-4857
1-800-661-2638 (Canada and USA)

Fax: +01-819-564-5698

E-mail: SupportGeoBase@NRCan.gc.ca

URL: <http://www.geobase.ca>

Copyright Notice

© Her Majesty the Queen in Rights of Canada, Department of Natural Resources.
All rights reserved.

GeoBase®

REVISION HISTORY

Date	Edition	Description
2003-01-10	1.0	First Edition
2007-05-31	2.0	Updates for NRN edition 2.0 - Addressing components (Address Range, Street Name and Place Name) reviewed. - Point location components added. - Polygon metadata components added. - Object metadata components reviewed. - Attributes added on linear geometry: <ul style="list-style-type: none">• Speed restrictions• Closing period• Road jurisdiction - Attributes renamed: <ul style="list-style-type: none">• National road class renamed Functional road class• Direction of traffic flow renamed Traffic direction - Attributes code list reviewed: <ul style="list-style-type: none">• Crossing type• Reference point type
2012-03	2.0.1	Inclusion of the following attributes into the NRN product: <ul style="list-style-type: none">• Speed Restrictions• Traffic Direction• Road Jurisdiction• Closing Period

TABLE OF CONTENTS

1 OVERVIEW..... 1

2 MODEL DESCRIPTION 1

2.1 SEGMENTED VIEW 2

2.2 DATA TYPES AND CODE LISTS 4

2.3 GEOMETRY..... 6

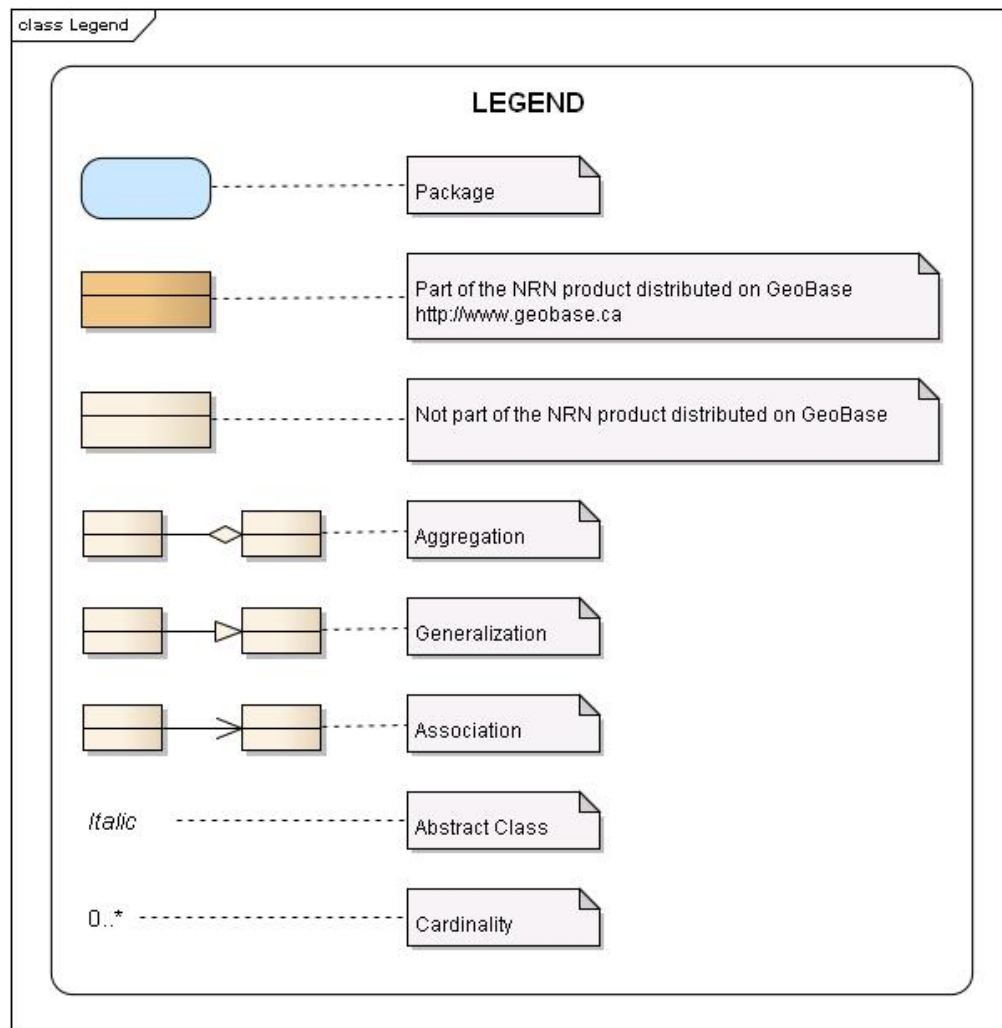
1 OVERVIEW

The National Road Network (NRN) conceptual model was elaborated in collaboration with interested data providers and is adopted by the Canadian Council on Geomatics (CCOG). The standard ISO 14825 — Intelligent transport systems — Geographic Data Files (GDF) — Overall data specification served as a guide for the elaboration of the NRN conceptual model. The NRN vocabulary used (class names and attribute names) largely conforms to the ISO 14825.

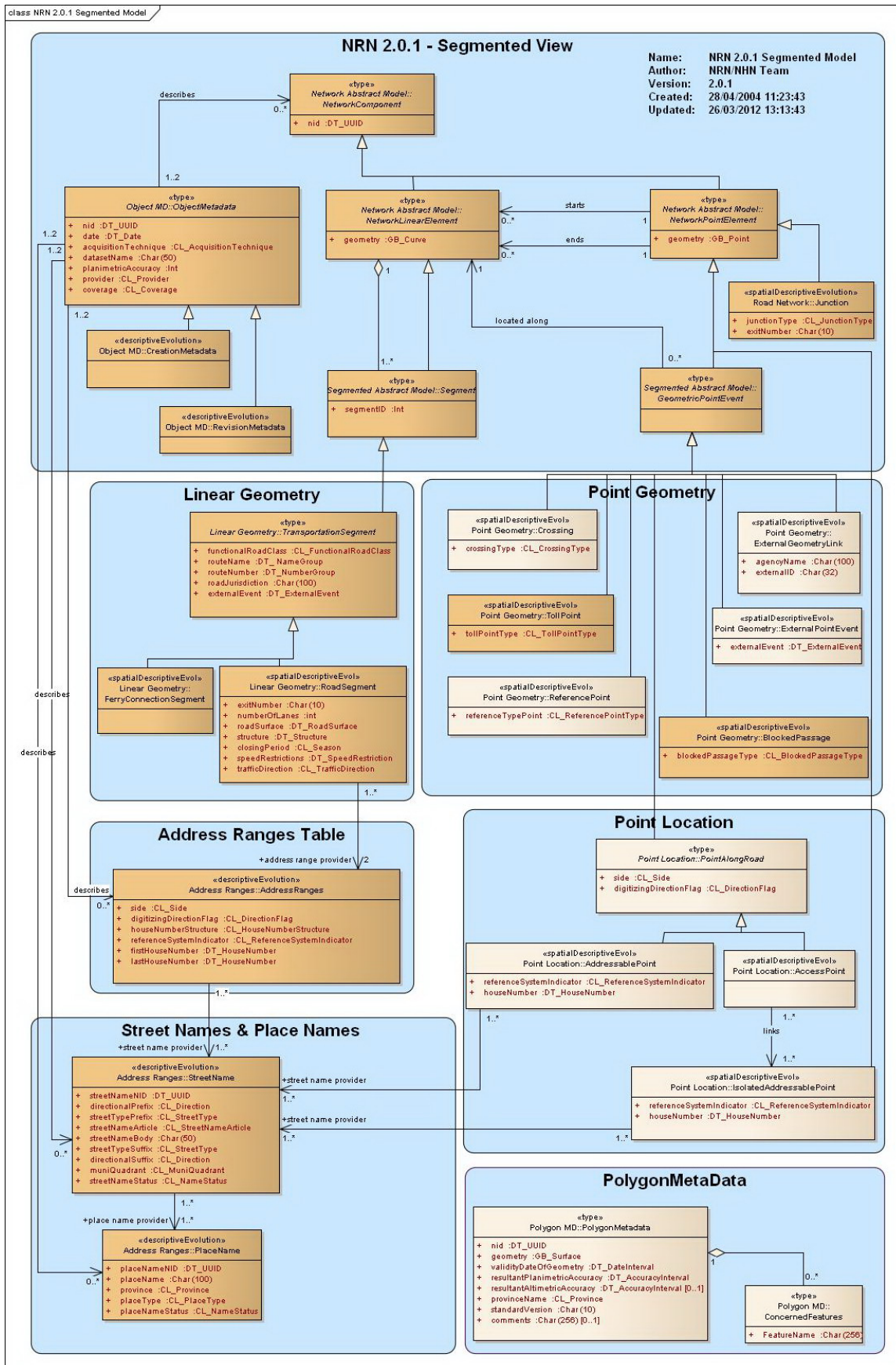
2 MODEL DESCRIPTION

This document describes the NRN conceptual model according to a segmented view where segmentation is created on linear elements where an attribute value changes.

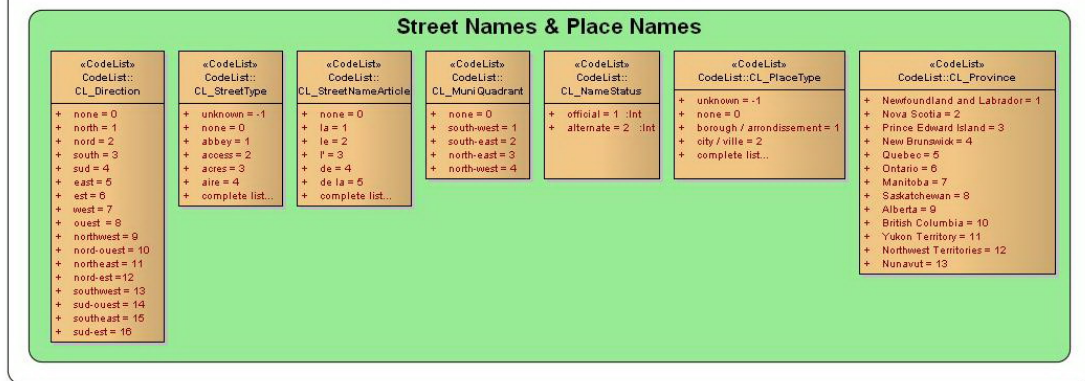
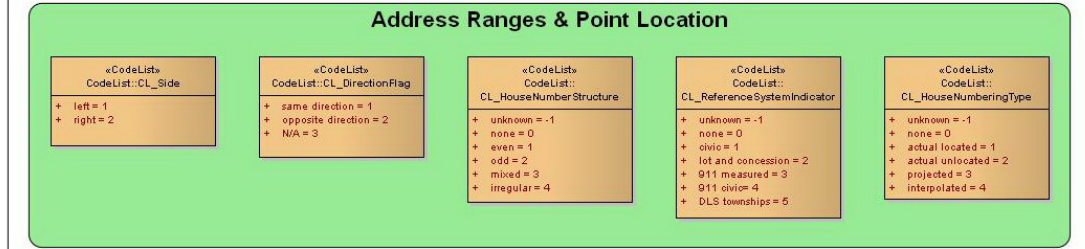
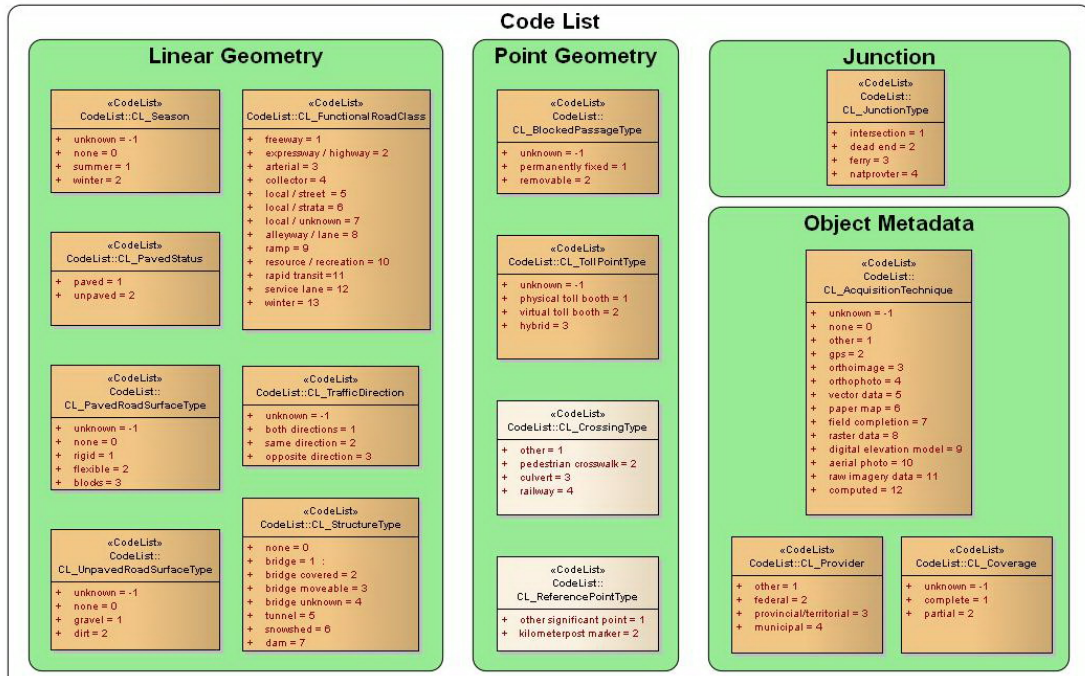
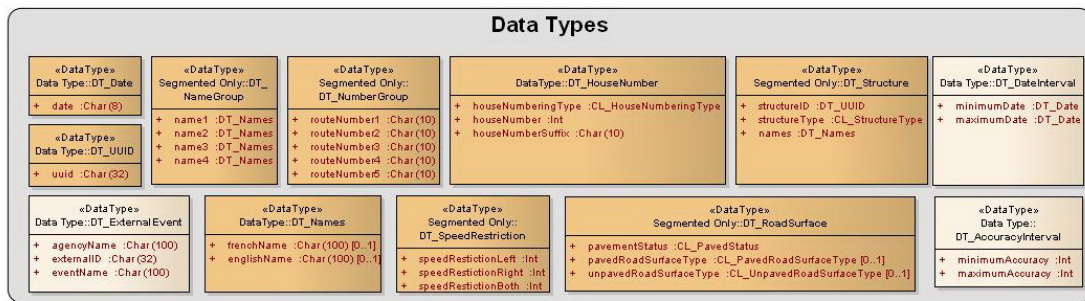
It also identifies classes and attributes that are part of the NRN, Edition 2.0.1 product distributed on the GeoBase portal (www.geobase.ca). The conceptual model is represented using UML (Unified Modeling Language) notation. Refer to the following legend for more indications.



2.1 Segmented view



2.2 Data types and code lists



2.3 Geometry

