



Natural Resources  
Canada

Ressources naturelles  
Canada

# **Toporama**

## **Release notes**

### **Edition 2.0**

### **2009-04-14**

**Natural Resources Canada  
Earth and Sciences Sector  
Centre for topographic information  
Customer Support Group**  
2144, King Street West, Suite 010  
Sherbrooke, Quebec, Canada  
J1J 2E8

Telephone: +01-819-564-4857  
1-800-661-2638 (Canada and USA)  
Fax: +01-819-564-5698  
E-mail: [geoinfo@NRCan.gc.ca](mailto:geoinfo@NRCan.gc.ca)  
URL : [www.GeoGratis.gc.ca](http://www.GeoGratis.gc.ca)

**Canada**

## Copyright notice

© Her Majesty the Queen in Right of Canada, Department of Natural Resources.  
All rights reserved.

**RELEASES HISTORY**

<b>Date</b>	<b>Edition</b>	<b>Description</b>
2009-04-14	2.0	Second edition
2008-10-20	1.0	Original edition

---

**TABLE OF CONTENTS**

**1 OVERVIEW..... 1**

**2 DATE OF PRODUCTION..... 1**

**3 CURRENT RELEASE NOTES..... 1**

**4 COVERAGE OF TOPORAMA PRODUCT ..... 2**

## 1 OVERVIEW

Toporama is a digital topographic reference product developed by Natural Resources Canada. Toporama integrates the best available data sources that cover the Canadian landmass to provide quality topographical information in raster format. Toporama is essentially based on the CanVec product.

## 2 DATE OF PRODUCTION

Current release date: April 14, 2009.

This publication of Toporama product corresponds to CanVec product fourth edition. Toporama product is designed to be released generally every six (6) month, usually during spring and autumn.

## 3 CURRENT RELEASE NOTES

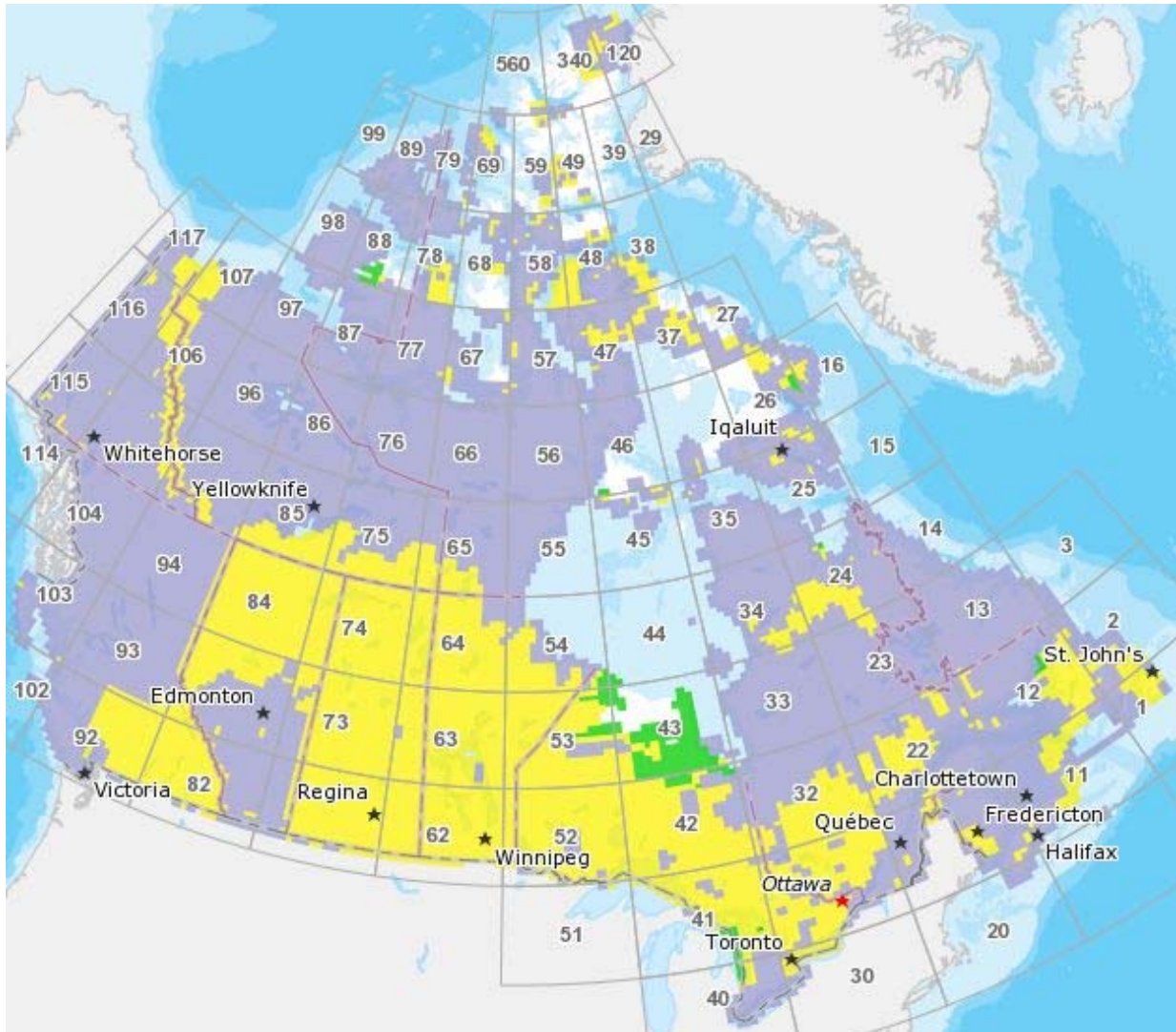
The fourth edition of Toporama product includes following novelties and modifications:

- Addition of 181 new datasets for which the majority comes from the project Mapping of the North (163 datasets), from the transfer of GeoBase National Hydro Network (NHN) data (17 datasets) to CanVec and from the digitizing, conversion and sometimes update of NTDB files (1 dataset).
- Update of National Road Network (NRN) into CanVec product. The following province/territory datasets have been actualized: Manitoba and Saskatchewan. A total of 838 datasets have been updated.
- The hydrography (Hydrographic obstacle entity, Island, Manmade hydrographic entity, Single line watercourse and Waterbody) that comes from GeoBase National Hydro Network (NHN) has been updated. More than 2 636 datasets located mainly in southern British Columbia, in the Prairies (Alberta, Manitoba and Saskatchewan), in Ontario, in Quebec and in Newfoundland and Labrador have been actualized and contain toponymic information in attribute.
- Update of geographical names for the entity Named feature. Toponyms from Canadian Geographical Name Data Base (CGNDB) have been actualized for the entire modified datasets of this release.
- More than one hundred datasets (a total of 103) now contain the entities Contour and Elevation point (metric). The metrification process aims to create new metric hypsographical data or to replace imperial hypsographical data (entities Contour imperial and Elevation point imperial).
- Correction of discrepancies for datasets and metadata in the third edition of Toporama product:
  - The structure (geometry) of the entity **Runway** area is erroneous (17 datasets, discrepancy no 01846);
  - Entity **Moraine** is missing: it was coded under entity **Glacial debris undifferentiated** (108 datasets, discrepancy no 01850);
  - Entity **Waterbody** in excess (8 datasets, discrepancy no 01852);
  - Entity **Sand** in excess (1 dataset, discrepancy no 01869);
  - The attribute values associated to toponyms (Lake name and/or River name) of entity **Waterbody** are erroneous (936 datasets, discrepancy no 01872).

## 4 COVERAGE OF TOPORAMA PRODUCT

A total of 12 720 datasets is part of the edition 2.0 of Toporama product where 181 are new and 4 368 are modified. 8 171 datasets are unchanged from previous edition.

Coverage of Toporama product – Edition 2.0



### Legend

- New (181 datasets)
- Modified/corrected (4 368 datasets)
- Identical/unchanged (8 171 datasets)