

LEGEND - LÉGENDE

ROADS AND RELATED FEATURES

- HARD SURFACE, ALL WEATHER
- LOOSE SURFACE
- CART TRACK, WINTER ROAD OR ROAD UNDER CONSTRUCTION
- TRAIL, CUT LINE, PORTAGE
- BUILT-UP AREA
- RAILWAY, SIDING, STATION, STOP
- BRIDGE
- SEAPLANE BASE, ANCHORAGE

LANDMARK FEATURES

- HOUSE, BARN
- CHURCH, SCHOOL
- POST OFFICE
- HISTORICAL SITE
- TOWERS: FIRE, RADIO
- WELL, OIL, GAS
- TANK, OIL, GASOLINE, WATER
- TELEPHONE LINE
- POWER TRANSMISSION LINE
- MINE
- CUTTING, EMBANKMENT
- GRAVEL PIT

BOUNDARIES AND SURVEY CONTROL

- INTERNATIONAL, PROVINCIAL, BOUNDARY MONUMENT
- COUNTY, DISTRICT
- TOWNSHIP, PARISH - SURVEYED - UNSURVEYED
- TOWNSHIP, DLS - SURVEYED, UNSURVEYED - SECTION CORNERS
- MUNICIPALITY
- INDIAN RESERVE, PARK, ETC.
- HORIZONTAL SURVEY POINT
- BENCH MARK
- SPOT ELEVATION, ELEVATION APPROXIMATE

DRAINAGE AND RELATED FEATURES

- STREAM, SHORELINE, INDEFINITE
- DIRECTION OF FLOW
- LAKE, INTERMITTENT LAKE
- INUNDATED LAND
- MARSH, SWAMP (WOODED)
- DRY RIVER BED WITH CHANNELS
- SAND, ABOVE, IN WATER
- STRING BOG
- TUNDRA PONDS, POLYGONS
- RAPIDS, FALLS, RAPIDS
- FORESHORE FLATS
- ROCK
- DAM
- WHARF
- DITCH

RELIEF FEATURES

- CONTOURS
- APPROXIMATE CONTOUR
- DEPRESSION
- ESKER
- PINGO
- SAND, SAND DUNES
- PALSA BOG
- WOODED AREA
- CLEARED AREA

ROUTES ET OUVRAGES CONNEXES

- SURFACE DURE, TOUTES SAISONS
- GRAVIER
- CHEMIN DE TERRE, D'HIVER OU CHEMIN EN CONSTRUCTION
- SENTIER, PERÇÉE, PORTAGE
- AGGLOMERATION
- CHEMIN DE FER, VOIE D'ÉVITEMENT, GARE, ARRÊT
- PONT
- HYDROAÉROPORT, MOULAGE

POINTS DE REPÈRE

- MAISON, GRANGE
- ÉGLISE, ÉCOLE
- BUREAU DE POSTE
- LIEU HISTORIQUE
- TOURS: FEU, RADIO
- PUITS: PÉTROLE, GAZ
- RÉSERVOIR: PÉTROLE, ESSENCE, EAU
- LIGNE TÉLÉPHONIQUE
- LIGNE DE TRANSPORT D'ÉNERGIE
- MINE
- TRANCHÉE, REMBLAI
- FOSSE DE GRAVIER

FRONTIÈRES ET POINTS DE RÉFÉRENCES

- INTERNATIONALE, PROVINCIALE, BORNE FRONTIÈRE
- COMTE, DISTRICT
- CANTON, PAROISSE - ARPENTE - NON ARPENTE
- CANTON, DLS - ARPENTE, NON ARPENTE
- MUNICIPALITÉ
- RÉSERVE INDIGÈNE, PARC, ETC.
- REPÈRE PLANIMÉTRIQUE
- REPÈRE DE NIVELLEMENT
- POINT COTÉ, ÉLEVATION APPROXIMATIVE

DRAINAGE ET OUVRAGES CONNEXES

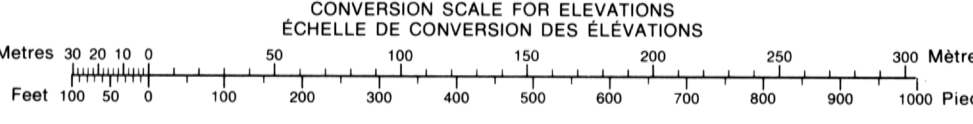
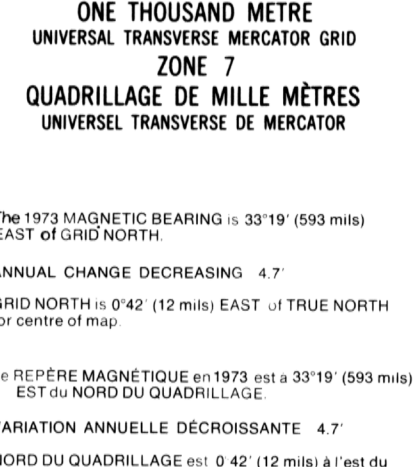
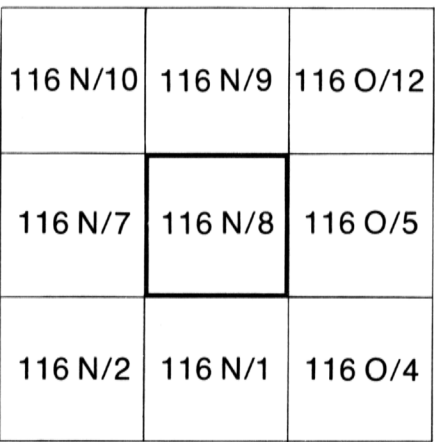
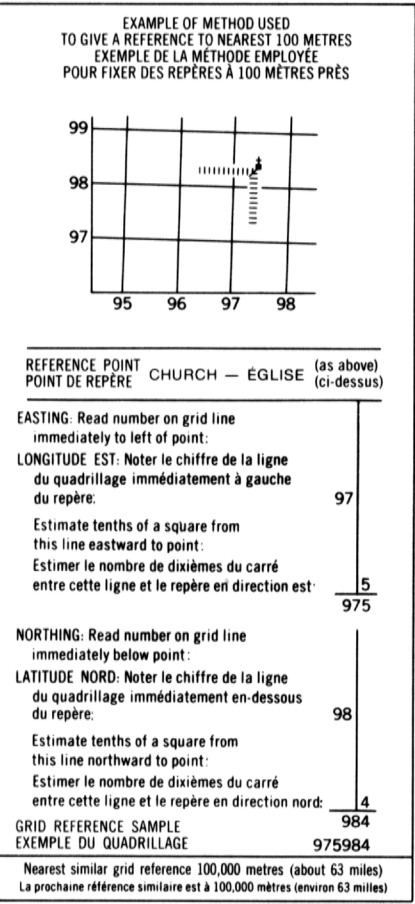
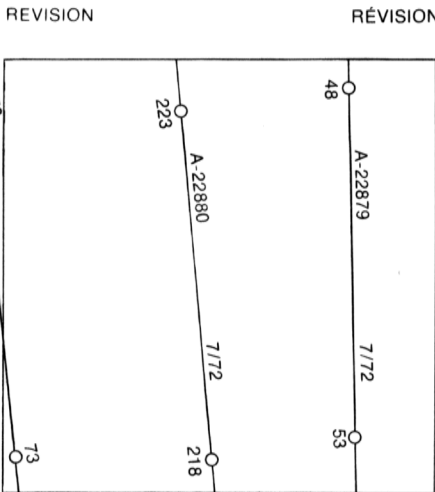
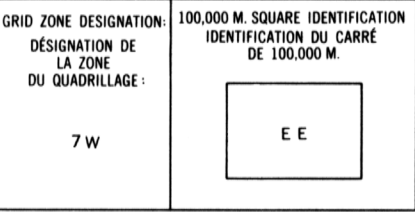
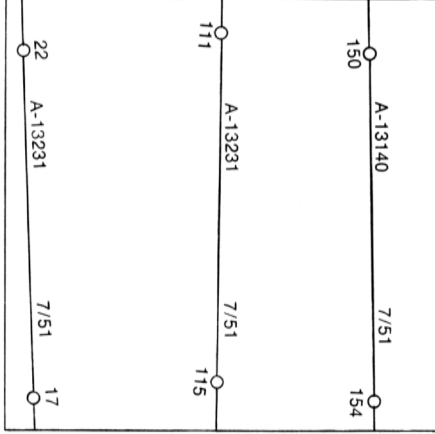
- COURS D'EAU, RIVE, IMPRÉCISE
- DIRECTION DU COURANT
- LAC, LAC INTERMITTENT
- TERRAIN INONDÉ
- MARAIS, MARECAGE (BOISÉ)
- LIT DE COURS D'EAU TARI AVEC CHENAUX
- SABLE, AU DESSUS, DANS L'EAU
- MARECAGES EN ENFILADE
- TOUNDRA: ÉTANGS, SOLS POLYGONAUX
- RAPIDES, CHUTES, RAPIDES
- ESTRANS
- ROCHE
- BARRAGE
- QUAI
- FOSSE

RELIEF

- COURE DE NIVEAU
- COURE DE NIVEAU APPROXIMATIF
- COURE DE CUVETTE
- ESKER
- PINGO
- SABLE, DUNES
- PALSE
- RÉGION BOISÉE
- REGION DEBOISÉE

PHOTOGRAPHY PHOTOGRAPHIE

COMPILATION RESTITUTION



TWIN LAKE YUKON TERRITORY

