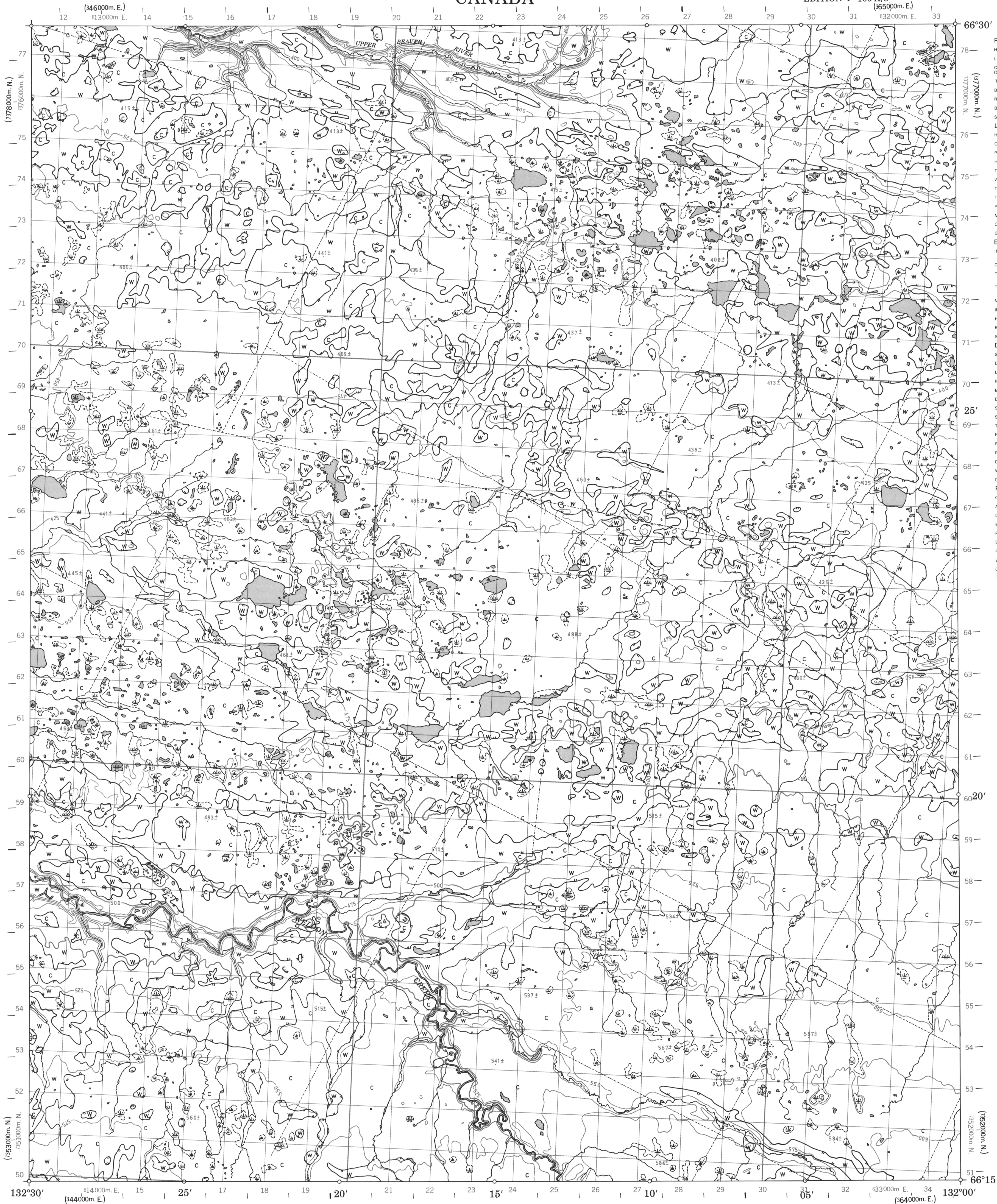


CANADA

EDITION 1 106 K/8  
(365000m. E.)

Military users,  
refer to this map as:  
Réf rence de la carte  
pour usage militaire:

SERIES A 733 S RI   
MAP 106 K/8 CARTE  
EDITION 1 MCE  DITION



ROADS AND RELATED FEATURES

- HARD SURFACE, ALL WEATHER
- LOOSE SURFACE
- CART TRACK, WINTER ROAD  
OR ROAD UNDER CONSTRUCTION
- TRAIL, CUT LINE, PORTAGE
- RAILWAY, SIDING, STATION, STOP
- BRIDGE
- SEAPLANE BASE, ANCHORAGE

LANDMARK FEATURES

- HOUSE, BARN
- CHURCH, SCHOOL
- POST OFFICE
- HISTORICAL SITE
- TOWERS, FIRE, RADIO
- WELL, OIL, GAS
- TANK, OIL, GASOLINE, WATER
- TELEPHONE LINE
- POWER TRANSMISSION LINE
- MINE
- CUTTING, EMBANKMENT
- GRAVEL PIT

BOUNDARIES AND SURVEY CONTROL

- INTERNATIONAL, PROVINCIAL  
BOUNDARY MONUMENT
- COUNTY, DISTRICT
- TOWNSHIP, PARISH - SURVEYED  
- UNSURVEYED
- TOWNSHIP, DLS - SURVEYED, UNSURVEYED  
SECTION CORNERS
- MUNICIPALITY
- INDIAN RESERVE, PARK, ETC
- HORIZONTAL SURVEY POINT
- BENCH MARK
- SPOT ELEVATION, ELEVATION APPROXIMATE

DRAINAGE AND RELATED FEATURES

- STREAM, SHORELINE, INDEFINITE
- DIRECTION OF FLOW
- LAKE, INTERMITTENT LAKE
- INUNDATED LAND
- MARSH, SWAMP (WOODED)
- DRY RIVER BED WITH CHANNELS
- SAND, ABOVE, IN WATER
- STRING BOG
- TUNDRA, PONDS, POLYGONS
- RAPIDS, FALLS, RAPIDS
- FORESHORE FLATS
- ROCK
- DAM
- WHARF
- DITCH

RELIEF FEATURES

- CONTOURS
- APPROXIMATE CONTOUR
- DEPRESSION
- ESKER
- PINGO
- SAND, SAND DUNES
- PALSA BOG
- WOODED AREA
- CLEARED AREA

LEGEND - L G NDE

ROUTES ET OUVRAGES CONNEXES

- SURFACE DURE, TOUTES SAISONS
- GRAVIER
- CHEMIN DE TERRE, D'HIVER  
OU CHEMIN EN CONSTRUCTION
- SENTIER, PERC E, PORTAGE
- AGGLOMERATION
- CHEMIN DE FER, VOIE D' VITEMENT, GARE, ARR T
- PONT
- HYDRO ROPORT, MOULAGE

POINTS DE REP RE

- MAISON, GRANGE
- EGLISE,  COLE
- BUREAU DE POSTE
- LIEU HISTORIQUE
- TOURS, FEU, RADIO
- PUITS, P TROLE, GAZ
- R SERVOIR, P TROLE, ESSENCE, EAU
- LIGNE T L PHONIQUE
- LIGNE DE TRANSPORT D' NERGIE
- MINE
- TRANCH E, REMBLAI
- FOSSE DE GRAVIER

FRONTI RES ET POINTS DE R F RENCES

- INTERNATIONALE, PROVINCIALE  
BORNE FRONTI RE
- COM T , DISTRICT
- CANTON, PAROISSE - ARPENTE  
- NON ARPENTE
- CANTON, DLS - ARPENTE, NON ARPENTE
- SECTION ANGULAIRE
- MUNICIPALIT 
- R SERVE INDIENNE, PARC, ETC
- REP RE PLANIM TRIQUE
- REP RE DE NIVELLEMENT
- POINT C TE, ELEVATION APPROXIMATIVE

DRAINAGE ET OUVRAGES CONNEXES

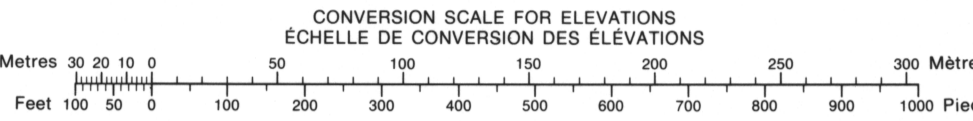
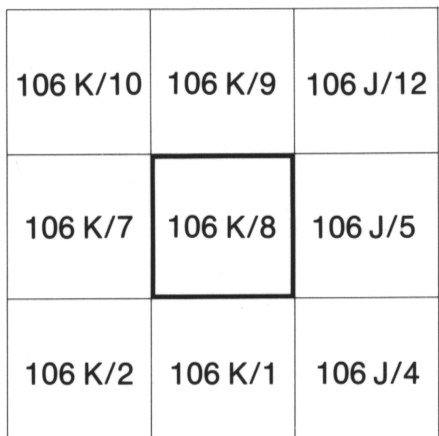
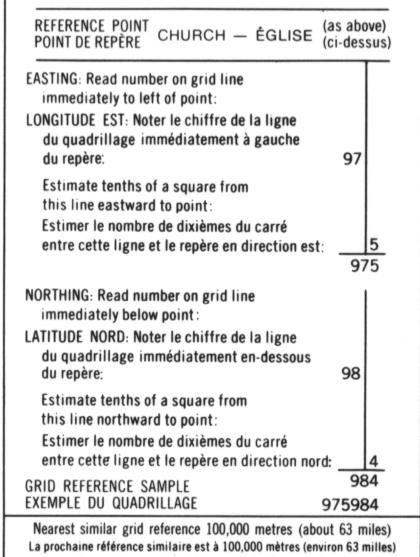
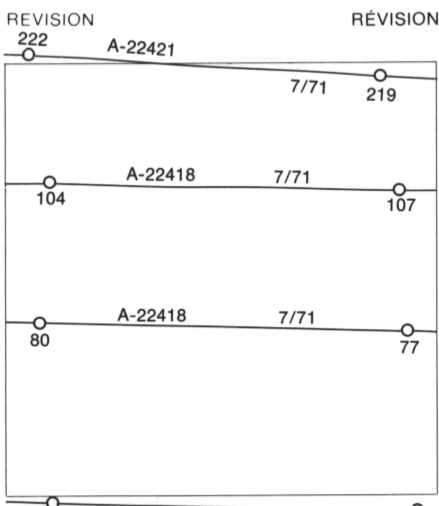
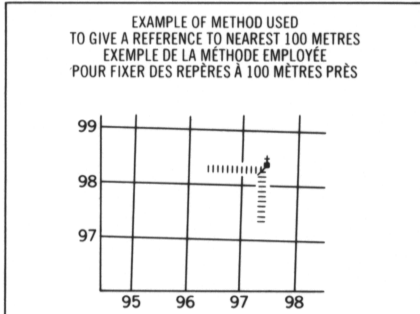
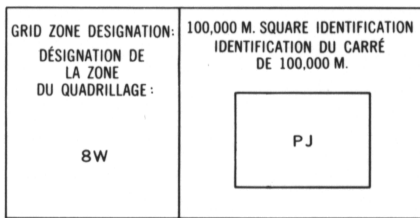
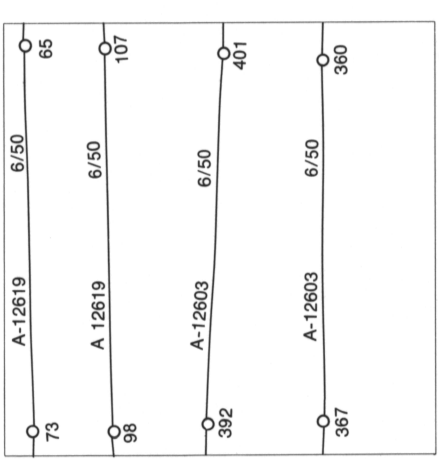
- COURS D'EAU, RIVE, IMPRECISE
- DIRECTION DU COURANT
- LAC, LAC, INTERMITTENT
- TERRAIN INOND 
- MARAIS, MARECAGE (BOIS E)
- LIT DE COURS D'EAU TARI AVEC CHENAUX
- SABLE, AU DESSUS, DANS L'EAU
- MARECAGES EN ENFILADE
- TOUNDRA - ETANGS, SOLS POLYGONAUX
- RAPIDES, CHUTES, RAPIDES
- ESTRANS
- ROCHE
- BARRAGE
- QUAI
- FOSSE

RELIEF

- COURBE DE NIVEAU
- COURBE DE NIVEAU APPROXIMATIF
- COURBE DE CUVETTE
- ESKER
- PINGO
- SABLE, DUNES
- PAUSE
- REGION BOIS E
- REGION DE BOIS E

PHOTOGRAPHY PHOTOGRAPHIE

COMPILATION RESTITUTION



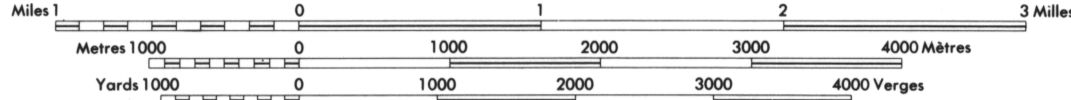
NOTE:  
GRID TICKS WITH NUMBERS IN BRACKETS  
OR WITHOUT NUMBERS INDICATE THE  
1000 METRE U.T.M. GRID  
ZONE 8  
LES TRAITS NUM ROT S ENTRE PARENTHESES  
OU SANS NUM RO INDICENT  
LE QUADRILLAGE DE 1000 M TRES U.T.M.

WELDON CREEK

DISTRICT OF MACKENZIE

NORTHWEST TERRITORIES

Scale 1:50,000  chelle



CES CARTES SONT EN VENTE AU BUREAU DE DISTRIBUTION DES CARTES.  
MINIST RE DE L' NERGIE, DES MINES ET DES RESSOURCES, OTTAWA.

 TABL  PAR LA DIRECTION DES LEV S ET DE LA  
CARTOGRAPHIE, MINIST RE DE L' NERGIE, DES  
MINES ET DES RESSOURCES, OTTAWA, 1973.

EQUIDISTANCE DES COURBES   25 PIEDS  
  CANADA 1973. TOUS DROITS R SERV S.

PRODUCED BY SURVEYS AND MAPPING BRANCH,  
DEPARTMENT OF ENERGY, MINES AND RESOURCES,  
OTTAWA, 1973.

COPIES MAY BE OBTAINED FROM THE MAP DISTRIBUTION OFFICE,  
DEPARTMENT OF ENERGY, MINES AND RESOURCES, OTTAWA, 1973.

CONTOUR INTERVAL 25 FEET

  CANADA COPYRIGHTS RESERVED 1973.

106 K/8

EDITION 1