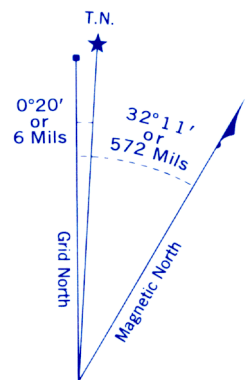
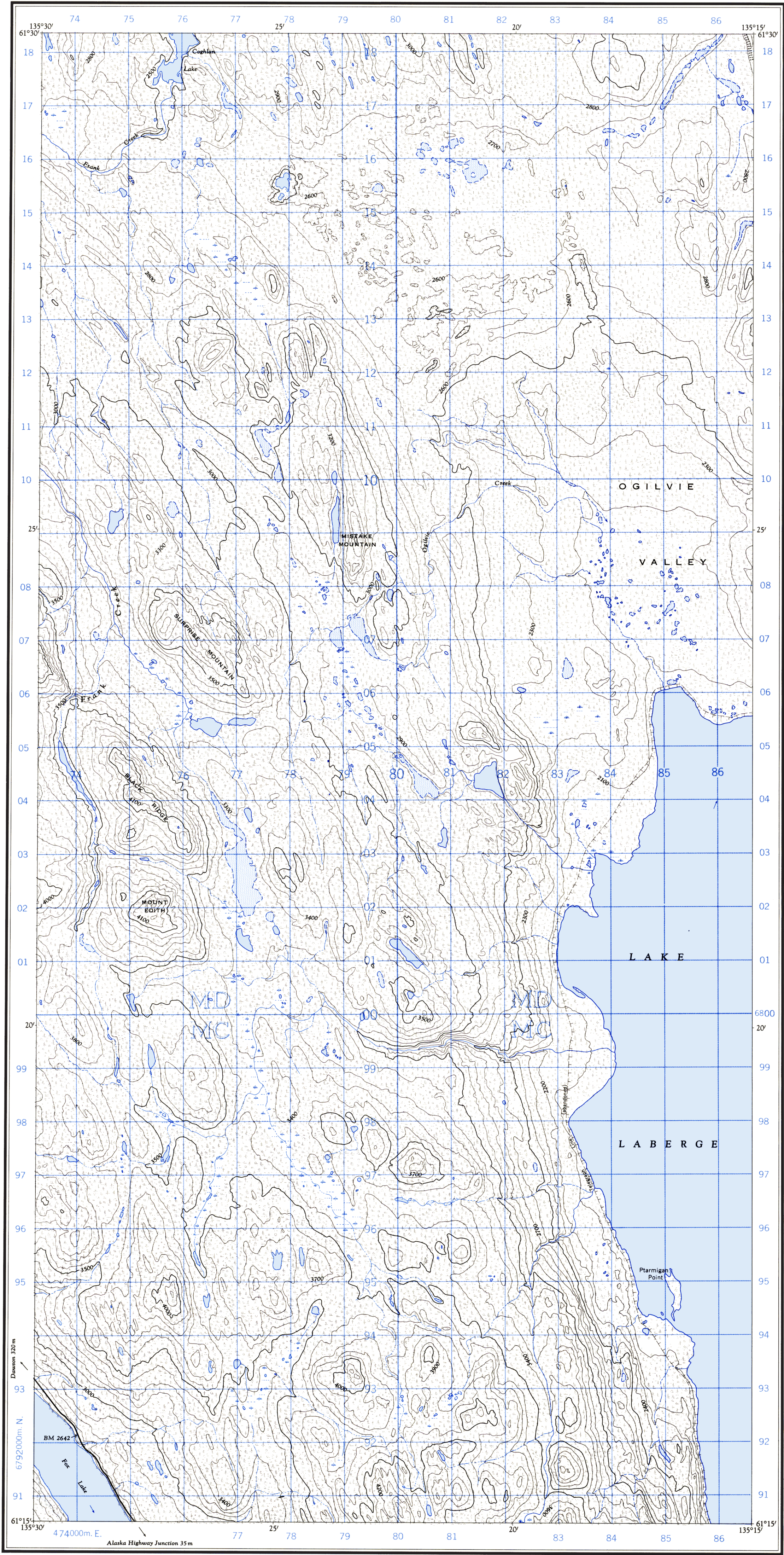


Refer to
this map as: 105 E/6 WEST
EDITION 1 ASE
SERIES A 722



100,000 M. SQUARE IDENTIFICATION	
GRID ZONE DESIGNATION	MD MC 68
TO GIVE A REFERENCE TO NEAREST 100 METRES	
EXAMPLE: STREAM JUNCTION	
EASTING: Read number on grid line immediately to left of point. Estimate tenths of a square from this line eastward to point.	80 8 08
NORTHING: Read number on grid line immediately below point. Estimate tenths of a square from this line northward to point.	00 8 008
MILITARY GRID REFERENCE 808008	
Nearest similar grid reference 100,000 metres (about 63 miles)	

ONE THOUSAND METRE
UNIVERSAL TRANSVERSE MERCATOR GRID
ZONE 8

Produced and printed by the SURVEYS AND MAPPING BRANCH, DEPARTMENT OF MINES AND TECHNICAL SURVEYS, 1961, from air photographs taken in 1948. Copies may be obtained from the Map Distribution Office, Department of Mines and Technical Surveys, Ottawa.

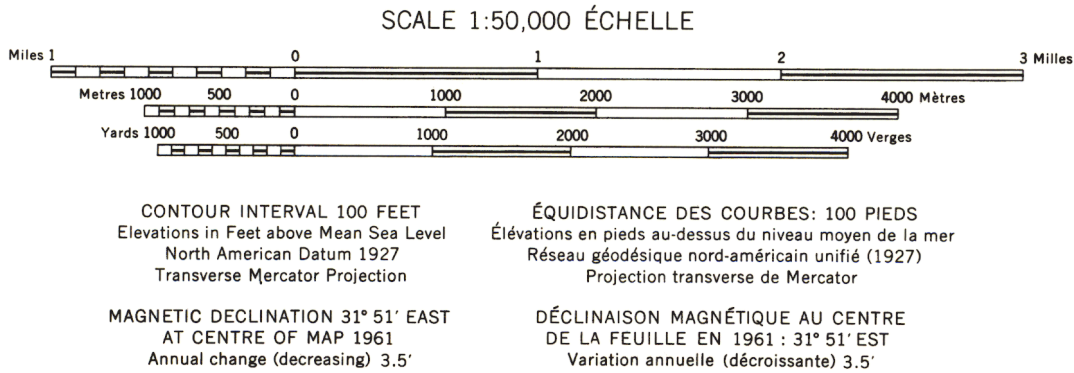
LOWER LABERGE YUKON TERRITORY

Établie et imprimée par la DIRECTION DES LEVÉS ET DE LA CARTOGRAPHIE, MINISTÈRE DES MINES ET DES RELÈVES TECHNIQUES en 1961, d'après les photographies aériennes prises en 1948. Ces cartes sont en vente au Bureau de distribution des cartes, ministère des Mines et des Relevés techniques, Ottawa.

Roads: all weather, dry weather, cart track, trail or portage, Railway, normal gauge, single track, Power transmission line, Mine or Open cut, Horizontal control point, with elevation, Bench mark, with elevation

Routes: toute saison, période sèche, de terre, sentier ou portage, Chemin de fer, voie unique (écartement normal), Ligne de transport d'énergie, Mine ou fosse à ciel ouvert, Point géodésique avec cote, Repère de nivellement avec cote

BM 157 →



Building, School, Church, Lighthouse, River with bridge, Stream, Lake intermittent, indefinite, Marsh or Swamp, Depression contours, Building, School, Church, Lighthouse, River with bridge, Stream, Lake intermittent, indefinite, Marsh or Swamp, Depression contours

The nomenclature on this map has not been submitted to the Canadian Board on Geographical Names and may be subject to revision. Information on names is invited by the Surveys and Mapping Branch.

La nomenclature de la présente carte n'a pas été soumise à la Commission canadienne des noms géographiques et, par conséquent, elle pourrait faire l'objet d'une révision. Tous renseignements sur les noms seront bien accueillis par la Direction des levés et de la cartographie.

NATIONAL TOPOGRAPHIC SYSTEM
SYSTÈME DE RÉFÉRENCE CARTOGRAPHIQUE NATIONAL