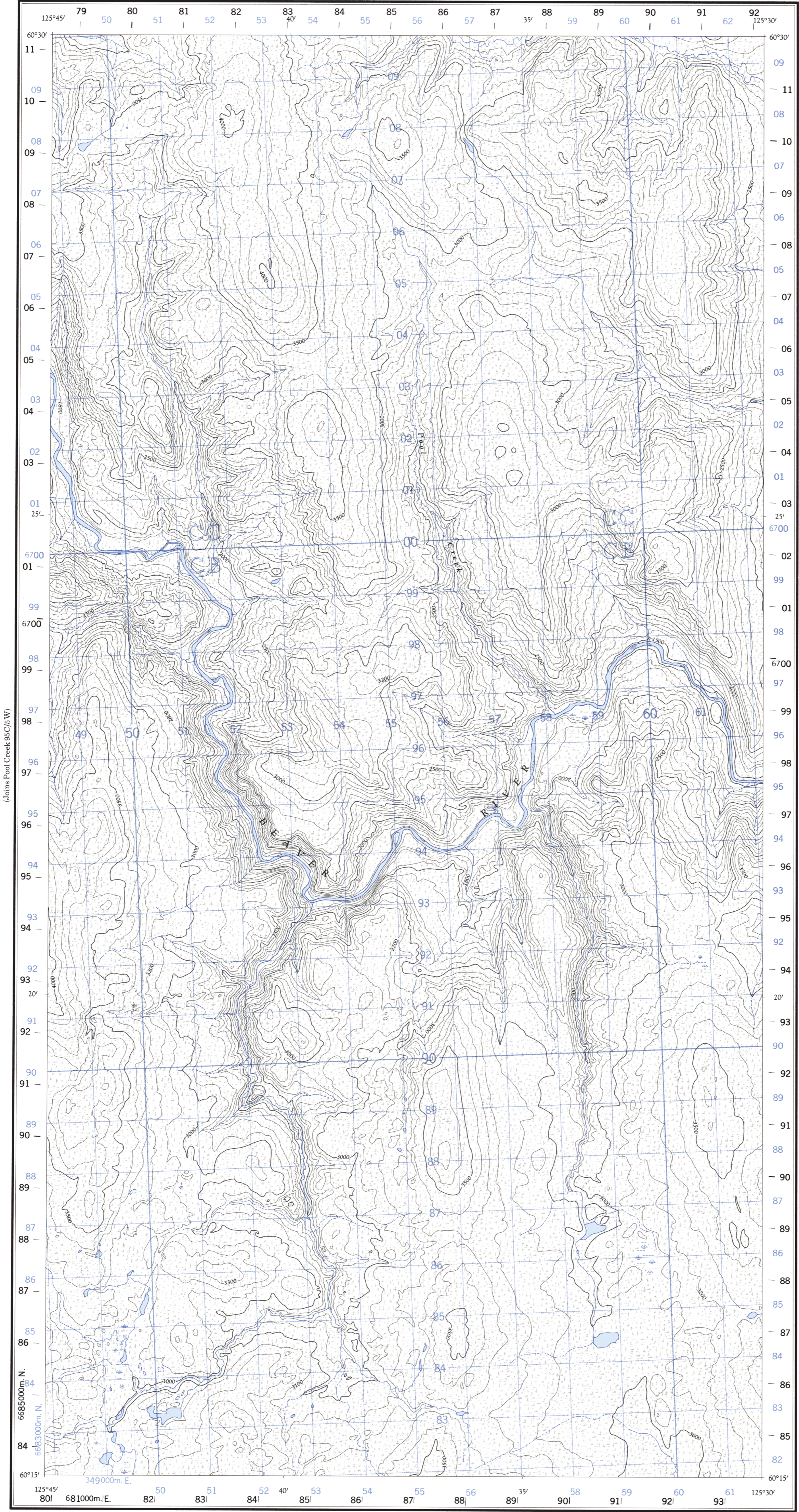
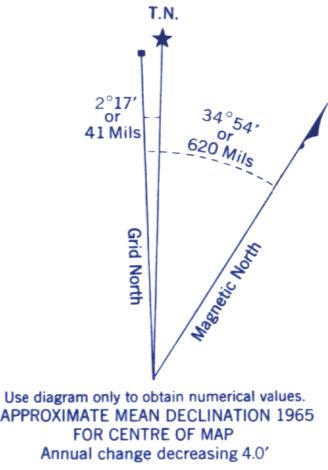


Refer to
this map as:
95 C/5 E
EDITION 1 ASE
SERIES A 722



CONVERSION SCALE FOR ELEVATIONS



GRID ZONE DESIGNATION	100,000 M. SQUARE IDENTIFICATION
10V	CC CB 67
TO GIVE A REFERENCE TO NEAREST 100 METRES	
EXAMPLE: STREAM JUNCTION	
EASTING: Read number on grid line immediately to left of point. Estimate tenths of a square from this line eastward to point.	56 3 563
NORTHING: Read number on grid line immediately below point. Estimate tenths of a square from this line northward to point.	92 5 925
MILITARY GRID REFERENCE	563925
Nearest similar grid reference 100,000 metres (about 63 miles)	

ONE THOUSAND METRE
UNIVERSAL TRANSVERSE MERCATOR GRID
ZONE 10

BLACK NUMBERED TICKS INDICATE
THE 1000 METRE U.T.M. GRID
ZONE 9

Compiled, 1964, by the SURVEYS AND MAPPING BRANCH,
DEPARTMENT OF MINES AND TECHNICAL SURVEYS,
from aerial photographs taken in 1961. Field surveys 1960. Printed 1966.

Copies may be obtained from the Map Distribution Office,
Department of Mines and Technical Surveys, Ottawa.

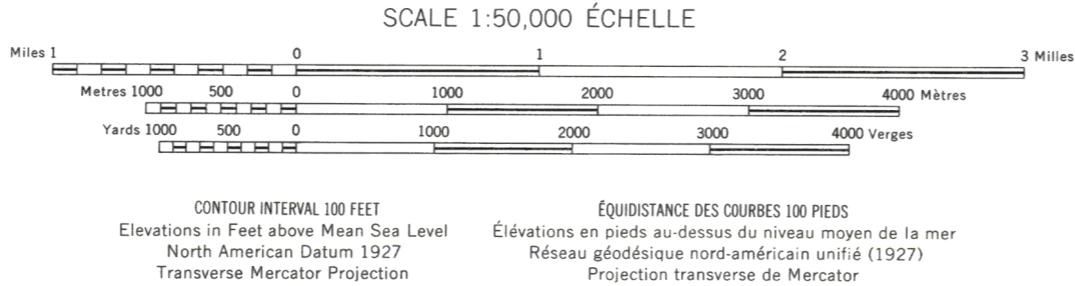
POOL CREEK
YUKON TERRITORY

(Joins Larsen Lake 95C/4E)

Rédigée en 1964, par la DIRECTION DES LEVÉS ET DE LA CARTOGRAPHIE,
MINISTÈRE DES MINES ET DES RELEVÉS TECHNIQUES, d'après des photo-
graphies aériennes prises en 1961. Levés sur le terrain en 1960. Imprimée en 1966.

Ces cartes sont en vente au Bureau de distribution des cartes,
ministère des Mines et des Relevés techniques, Ottawa.

Roads:	Routes:
all weather	toute saison
dry weather	période sèche
cart track	de terre
trail or portage	sentier ou portage
Railway, normal gauge, single track	Chemin de fer voie unique (écartement normal)
Power transmission line	Ligne de transport d'énergie
Mine or Open cut	Mine ou fosse à ciel ouvert
Horizontal control point, with elevation	Point géodésique avec cote
Bench mark, with elevation	Repère de nivellement avec cote



Building	Bâtiment	Barn	Grange
School	École	Post Office	Bureau de poste
Church	Eglise	Cemetery	Cimetière
Lighthouse	Phare		
River with bridge	Rivière avec pont		
Stream, intermittent or dry	Cours d'eau intermittent ou à sec		
Lake intermittent, indefinite	Lac intermittent, rive imprécise		
Marsh or Swamp	Marais ou marécage		
Depression contours	Courbes de cuvette		