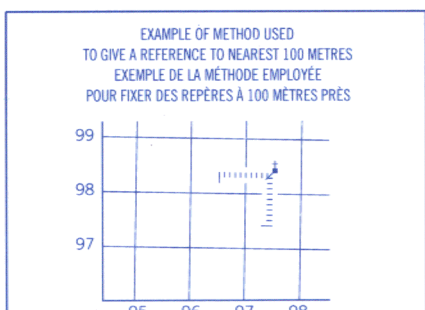
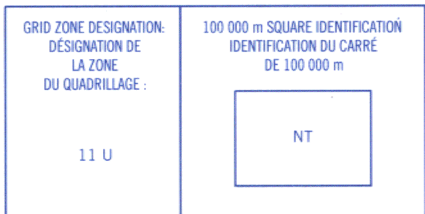


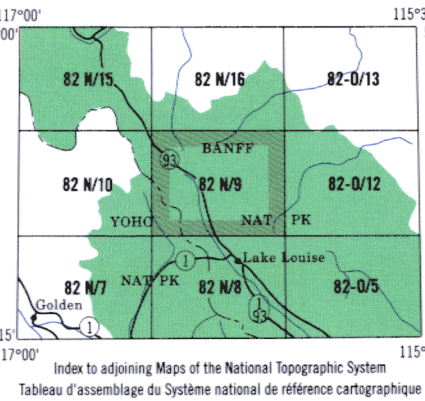
Use diagram only to obtain numerical values
approximate mean declination 1995
FOR CENTRE OF MAP
Annual change approximately 1.7'

N'utiliser le diagramme que pour obtenir les valeurs numériques
des déclinaisons moyennes approximatives
AU CENTRE DE LA CARTE EN 1995
Variation annuelle approximative 1.7'

ONE THOUSAND METRE
UNIVERSAL TRANSVERSE MERCATOR GRID
ZONE 11
QUADRILLAGE UNIVERSEL TRANSVERSE DE MERCATOR
DE MILLE MÈTRES



REFERENCE POINT	CHURCH - EGLISE	See above
POINT DE REPERE	CHURCH - EGLISE	(31)-(above)
EASTING: Read number on grid line immediately to left of point.		
NORTHING: Read number on grid line immediately below point.		
EXAMPLE: Point of intersection of grid lines 97 and 98.		
Estimate number of a square from this line westward to point.		
Estimate number of a square from this line southward to point.		
Estimate in number of squares of the corner within each line of a square in direction west.		
GRID REFERENCE		
REFERENCE TO GRID		
Read number on grid line immediately below point.		
Estimate in number of squares of the corner within each line of a square in direction west.		
GRID REFERENCE		
REFERENCE TO GRID		
Read number on grid line immediately below point.		
Estimate in number of squares of the corner within each line of a square in direction west.		
GRID REFERENCE		
REFERENCE TO GRID		



LOCAL DEALER

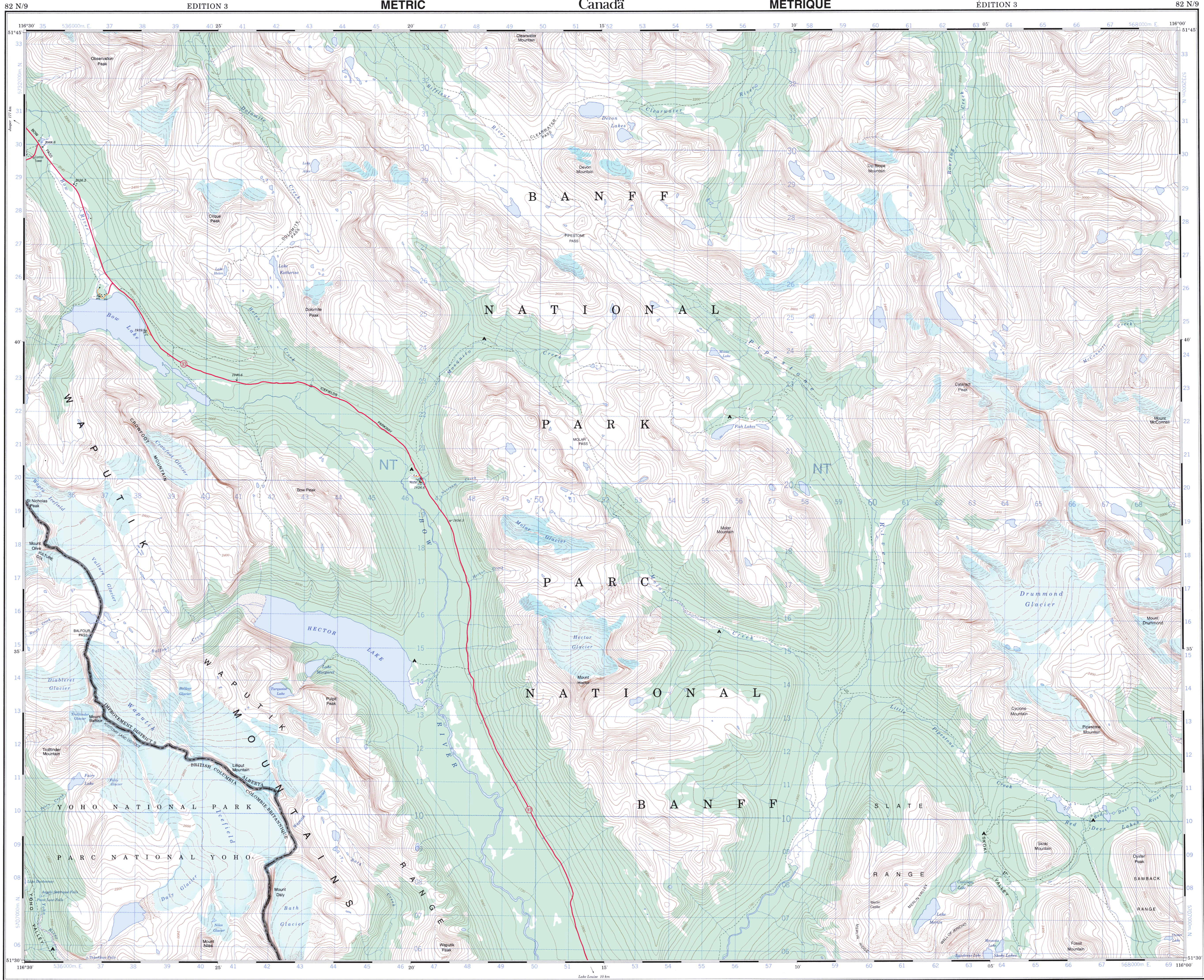
DETAILLANT LOCAL



NRCAN TOPOGRAPHIC MAPS
LES CARTES TOPOGRAPHIQUES DE RNCAN

HECTOR LAKE
82 N/9

SCALE / ÉCHELLE 1:50000



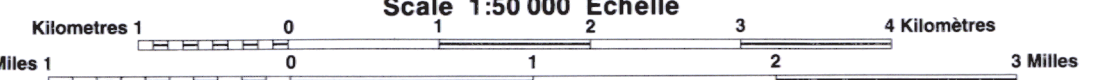
PRODUCED BY THE CANADA CENTRE FOR MAPPING
NATURAL RESOURCES CANADA. INFORMATION CURRENT AS
OF 1994. PUBLISHED 1996.

© 1996, HER MAJESTY THE QUEEN IN RIGHT OF CANADA.

We welcome your comments.
Just phone us at 1-800-465-MAPS.
Digital topographic data is also available
for this region. For more information,
phone us at 1-800-661-2638.

HECTOR LAKE
ALBERTA BRITISH COLUMBIA
ALBERTA COLOMBIE-BRITANNIQUE
WEST OF FIFTH MERIDIAN OUEST DU CINQUIÈME MÉRIDIEN

Scale 1:50 000 Échelle



CONVERSION SCALE FOR ELEVATIONS	ÉCHELLE DE CONVERSION DES ALTITUDES
Metres 30 20 10 0 100 200 300 400 500 600 700 800 900 1000	150 200 250 300 350 400 450 500 550 600 650 700 750 800 850 900 950 1000
Feet 100 150 200 250 300 350 400 450 500 550 600 650 700 750 800 850 900 950 1000	
CONTOUR INTERVAL 40 METRES Elevations in Metres above Mean Sea Level	EQUIDISTANCE DES COURBES 40 MÈTRES Altitudes en mètres
TRANSVERSE MERCATOR PROJECTION North American Datum 1983	PROJECTION TRANSVERSE DE MERCATOR Système de coordonnées géographiques nord-américain, 1983
Coordinate Conversion NAD 83 (NAD 83) to NAD 27 Mean value for this map	Conversion des coordonnées NAD 83 (NAD 83) à NAD 27 Valeur moyenne pour cette carte
Geographic: Latitude: 0.0° Longitude: 0.0°	Coordonnées géographiques: Latitude: 0.0° Longitude: 0.0°
Grid: Northing: 217m Easting: 47m	Quadrillage: Ordonnées N: 217m Abscisses E: 47m

Roads	Routes	Water Features	Other Features
hard surface	revêtement dur	water feature	water feature
hard surface	revêtement dur	water feature	water feature
loose or stabilized surface, all weather	gravier, asphalté, toute saison	water feature	water feature
loose surface, dry weather	de gravier, temps sec	water feature	water feature
speed/unclassified road	route non classée	water feature	water feature
vehicle track	chemin de terre	water feature	water feature
trail, cut line or portage	sentier, percée ou portage	water feature	water feature
		water feature	water feature

FOR COMPLETE REFERENCE SEE REVERSE SIDE
POUR UNE LISTE COMPLÈTE DES SIGNES, VOIR AU VERSO

Nous apprécions vos commentaires.
Téléphonez-nous au 1-800-465-6277.
Des données topographiques numériques
sont aussi disponibles pour cette région.
Pour plus de renseignements, téléphonez-
nous au 1-800-661-BNDT.