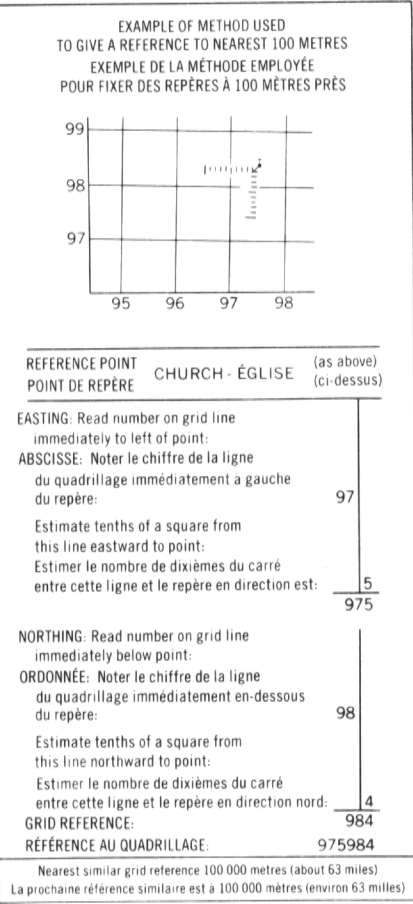
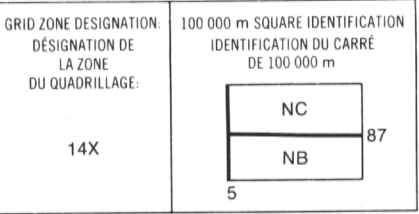
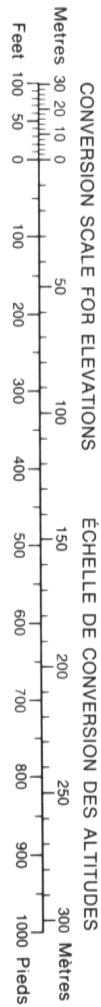


Military users,
refer to this map as:
Réf rence de cette carte
pour usage militaire:

SERIES A 002
MAP 69 E/6
EDITION 1 MCE

S RI 
CARTE
 DITION



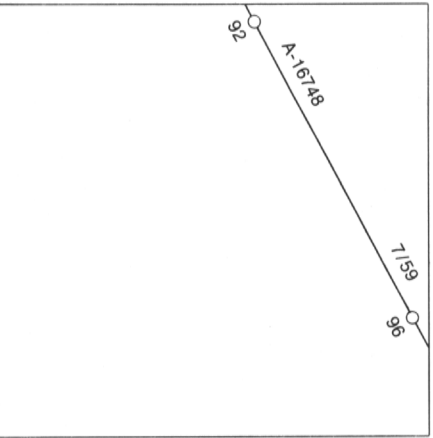
ONE THOUSAND METRE
UNIVERSAL TRANSVERSE MERCATOR GRID
ZONE 14
QUADRILLAGE DE MILLE M TRES
TRANSVERSE UNIVERSEL DE MERCATOR

The 1982 MAGNETIC BEARING is 114 51' (2042 mils)
WEST of GRID NORTH.
ANNUAL CHANGE DECREASING 71 5'
GRID NORTH is 0 29' (9 mils) EAST of TRUE NORTH
for centre of map.

Le REP RE MAGN TIQUE en 1982 est   114 51' (2042 mils)
  l'OUEST DU NORD DU QUADRILLAGE.
VARIATION ANNUELLE D CROISSANTE 71 5'
NORD DU QUADRILLAGE est   0 29' (9 mils)   l'EST du
NORD G OGRAPHIQUE au centre de la carte

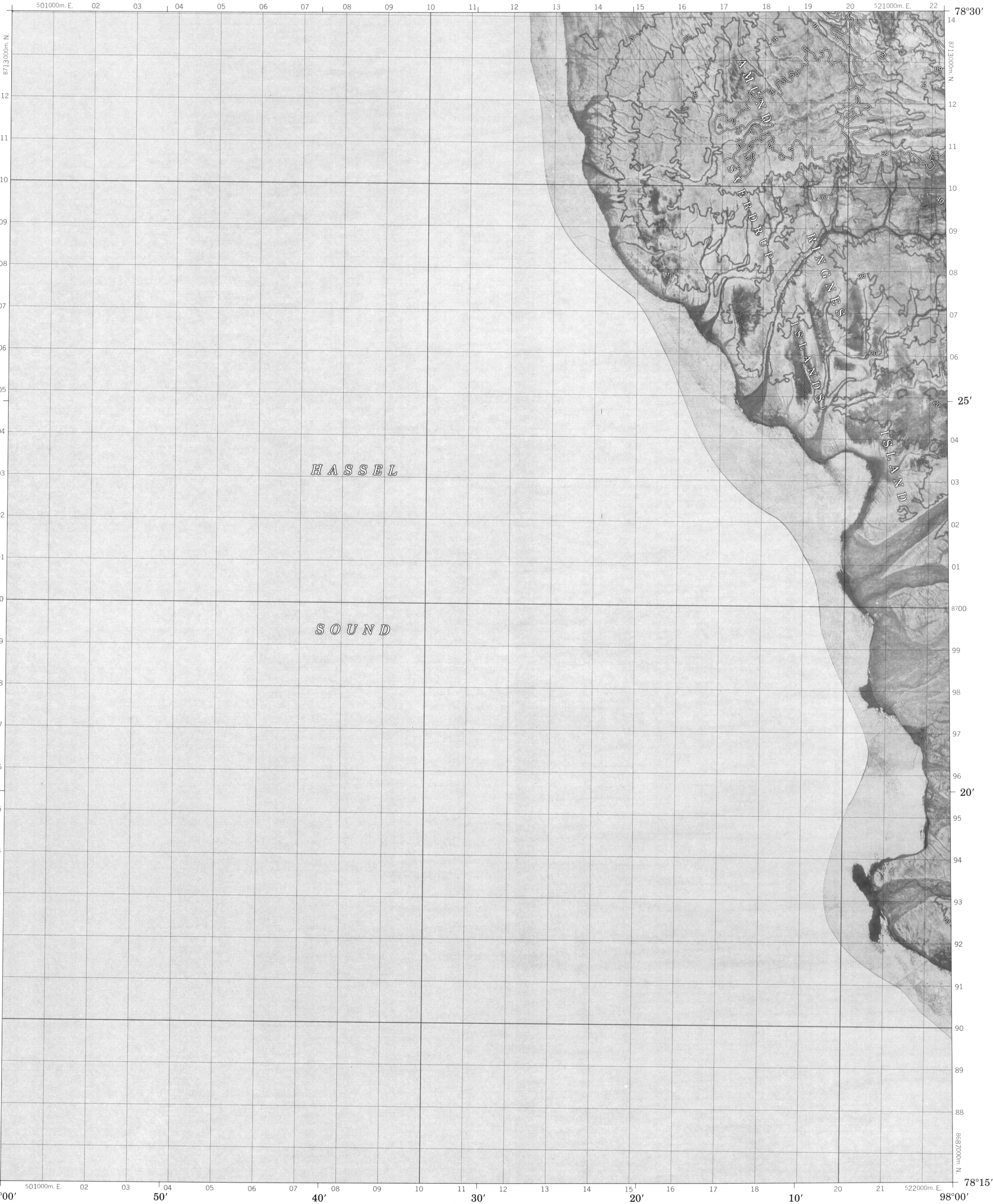
THE MAGNETIC COMPASS IS LIKELY
TO BE USELESS IN THIS AREA
LA BOUSSOLE SERA PROBABLEMENT
INUTILE DANS CETTE R GION.

PHOTOGRAPHY PHOTOGRAPHIE
COMPILATION RESTITUTION



69 E/12	69 E/11	69 E/10
69 E/5	69 E/6	69 E/7
69 E/4		69 E/2

69 E/6
EDITION 1  DITION



PRODUCED BY THE SURVEYS AND MAPPING BRANCH,
DEPARTMENT OF ENERGY, MINES AND RESOURCES,
OTTAWA. PUBLISHED IN 1982.

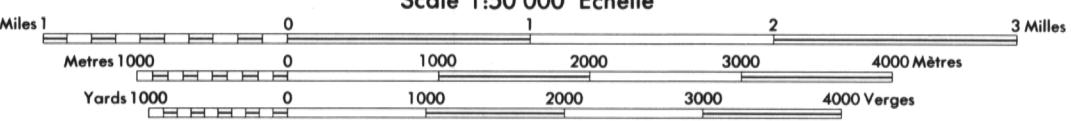
COPIES MAY BE OBTAINED FROM THE CANADA MAP OFFICE,
DEPARTMENT OF ENERGY, MINES AND RESOURCES, OTTAWA,
OR YOUR NEAREST MAP DEALER.

  1982 HER MAJESTY THE QUEEN IN RIGHT OF CANADA
DEPARTMENT OF ENERGY, MINES AND RESOURCES.

ELEVATIONS IN METRES ABOVE MEAN SEA LEVEL
CONTOUR INTERVAL 10 METRES

NORTH AMERICAN DATUM 1927
TRANSVERSE MERCATOR PROJECTION

INFORMATION CONCERNING LOCATION AND PRECISE
ELEVATION OF BENCH MARKS CAN BE OBTAINED BY
WRITING TO THE GEODETIC SURVEY, SURVEYS AND
MAPPING BRANCH, OTTAWA.



ALTITUDES EN M TRES
 QUIDISTANCE DES COURBES 10 M TRES

SYST ME DE R F RENCE G OD SIQUE NORD-AM RICAIN 1927
PROJECTION TRANSVERSE DE MERCATOR

ON PEUT OBTENIR DES R NSEIGNEMENTS SUR LE LIEU
ET L'ALTITUDE EXACTE DES REP RES DE NIVELLEMENT
EN  CRIVANT AUX LEV S G OD SIQUES, DIRECTION DES
LEV S ET DE LA CARTOGRAPHIE, OTTAWA.

 TABL  PAR LA DIRECTION DES LEV S ET DE LA CARTO-
GRAPHIE, MINIST RE DE L' NERGIE, DES MINES ET DES RES-
SOURCES, OTTAWA, PUBL E EN 1982.

CES CARTES SONT EN VENTE AU BUREAU DES CARTES DU
CANADA, MINIST RE DE L' NERGIE, DES MINES ET DES RES-
SOURCES, OTTAWA, DU CHEZ LE VENDEUR, I.E. PLUS PR S.

  1982 SA MAJEST  LA REINE DU CHEF DU CANADA,
MINIST RE DE L' NERGIE, DES MINES ET DES RESSOURCES.

PLIER CETTE CARTE PEUT L'ENDOMMAGER