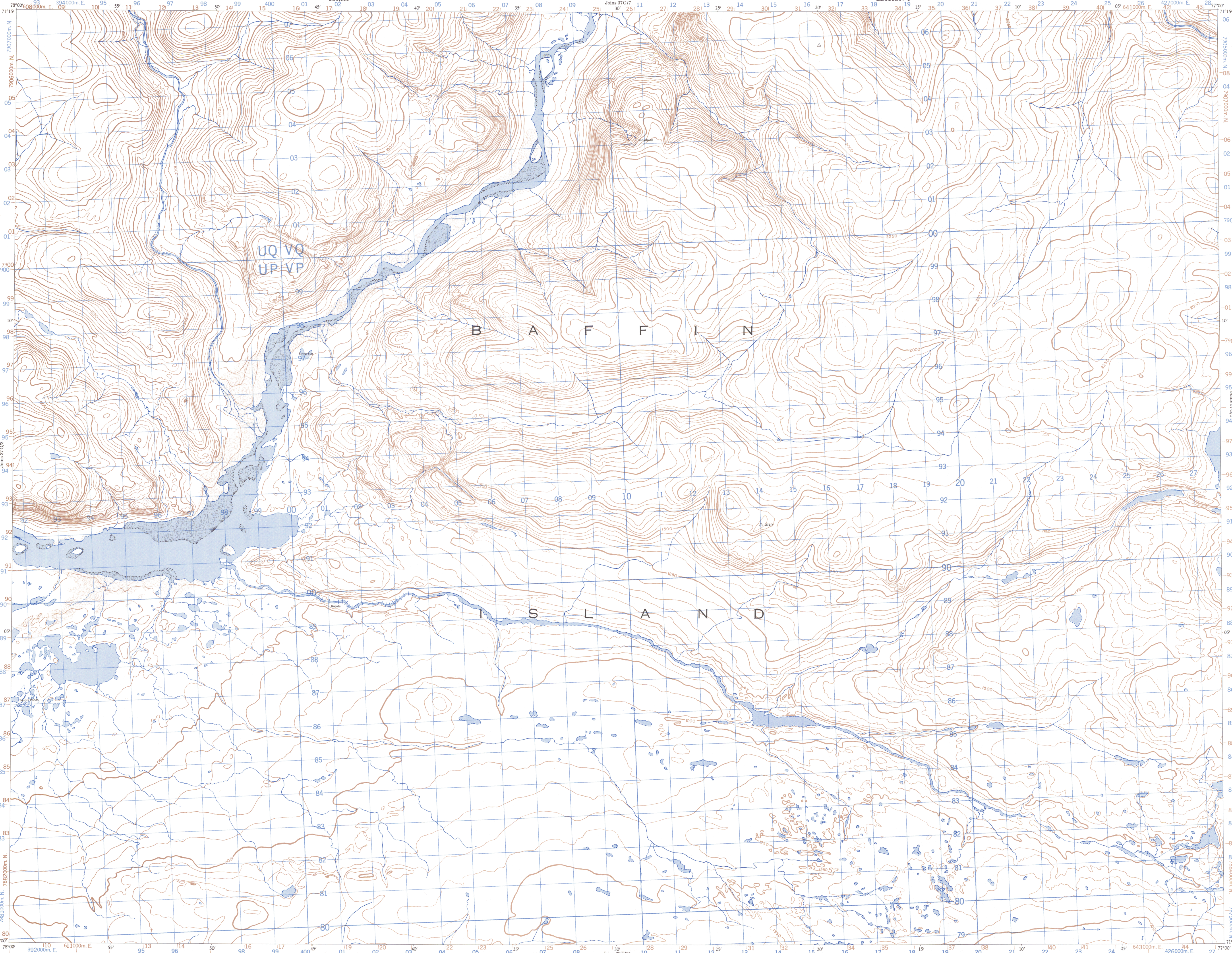


PROVISIONAL MAP

37 G/2



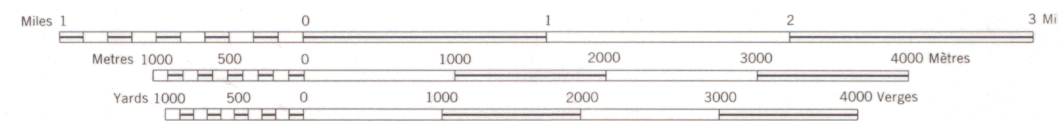
Produced, 1966, by the SURVEYS AND MAPPING BRANCH,
DEPARTMENT OF ENERGY, MINES AND RESOURCES,
from aerial photographs taken in 1954. Field notes 1965. Printed 1967.

Copies may be obtained from the Map Distribution Office,
Department of Energy, Mines and Resources, Ottawa.

The daily change of the North Magnetic Pole causes
the magnetic compass to be very erratic in this area.
La variation diurne du pôle Nord magnétique affole
le compas magnétique dans cette région.

DISTRICT OF FRANKLIN
NORTHWEST TERRITORIES

SCALE 1:50,000 ÉCHELLE



CONTOUR INTERVAL 50 FEET
Elevations in Feet above Mean Sea Level
North American Datum 1927
Transverse Mercator Projection

Some names on this map are not yet official.
Corrections or additions are invited by the
Surveys and Mapping Branch.

This Provisional Map is equivalent to a standard
map in accuracy of content.

EQUIDISTANCE DES COURBES 50 PIEDS
Élévations en pieds au-dessus du niveau moyen de la mer
Niveau de référence nord-américain 1927
Projection transverse de Mercator

Certain names inscribed on this map are not yet official.
Corrections or additions are invited by the
Director of the Cartographic Branch of the
Department of Energy, Mines and Resources, Ottawa.

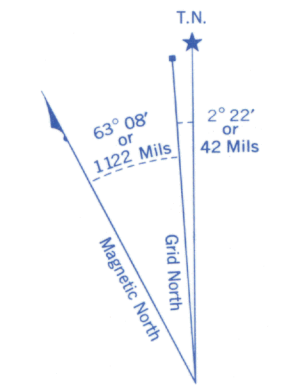
Cette carte provisoire est l'équivalente d'une
carte régulière au point de vue précision de
l'information.

Établie en 1966, par la DIRECTION DES LEVES ET DE LA CARTOGRAPHIE,
MINISTÈRE DE L'ÉNERGIE, DES MINES ET DES RESSOURCES, d'après des
photographies aériennes prises en 1954. Levés sur le terrain en 1965. Imprimée en 1967.

Ces cartes sont en vente au Bureau de distribution des cartes,
ministère de l'Énergie, des Mines et des Ressources, Ottawa.

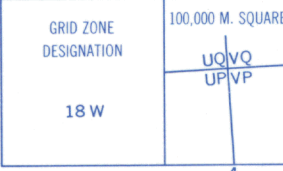
Refer to
this map as:

37 G/2
EDITION 1 ASE
SERIES A 713

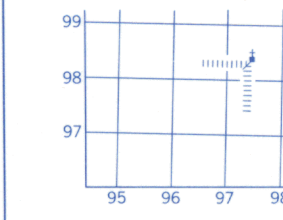


Use diagram only to obtain numerical values.
APPROXIMATE MEAN DECLINATION 1965:
FOR CENTRE OF MAP
Annual change decreasing 2.15'

ONE THOUSAND METRE
UNIVERSAL TRANSVERSE MERCATOR GRID



EXAMPLE OF METHOD USED
TO GIVE A REFERENCE TO NEAREST 100 METRES



REFERENCE POINT	CHURCH (as above)	
EASTING: Read number on grid line immediately to left of point.		
Estimate tenths of a square from top line eastward to point.	97	5
NOTING: Read number on grid line immediately below point.		
Estimate tenths of a square from this line northward to point.	98	4
EXAMPLE MILITARY GRID REFERENCE	975084	

Nearest similar grid reference 100,000 metres (about 61 miles).

ZONE 18

BROWN NUMBERED TICKS INDICATE
THE 1000 METRE U.T.M. GRID
ZONE 17

PROVISIONAL PRINT
IMPRESSION PROVISOIRE