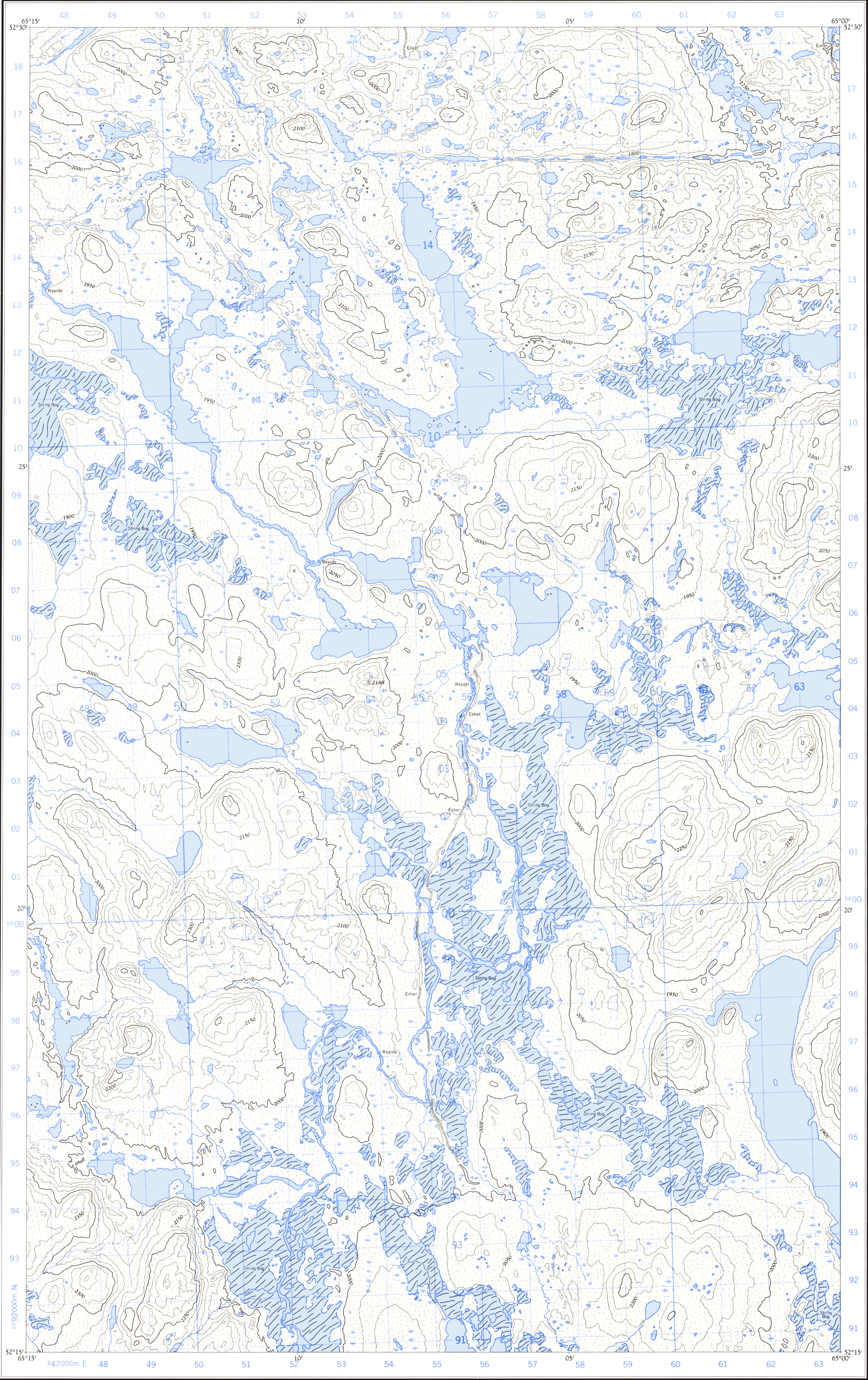


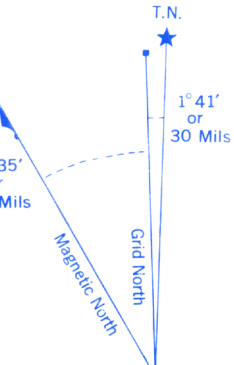
Refer to
this map as: 23 A/ 6 E
EDITION 1 ASE
SERIES A 7/1

(Joins 23 A/ 6 W)

(Joins 23 A/ W)



CONVERSION SCALE FOR ELEVATIONS



Use diagram only to obtain numerical values.
APPROXIMATE MEAN DECLINATION 1965
FOR CENTRE OF MAP
Annual change decreasing 3.9'

100,000 M. SQUARE IDENTIFICATION	
GRID ZONE DESIGNATION 20 U	<div><div>LP</div><div>LN</div></div> 58
TO GIVE A REFERENCE TO NEAREST 100 METRES	
EXAMPLE: STREAM JUNCTION	
EASTING: Read number on grid line immediately to left of point Estimate tenths of a square from this line eastward to point.	52 8 528
NORTHING: Read number on grid line immediately below point Estimate tenths of a square from this line northward to point.	07 3 073
MILITARY GRID REFERENCE	528073
Nearest similar grid reference 100,000 metres (about 63 miles)	

ONE THOUSAND METRE
UNIVERSAL TRANSVERSE MERCATOR GRID
ZONE 20

Compiled, 1963, by the SURVEYS AND MAPPING BRANCH,
DEPARTMENT OF MINES AND TECHNICAL SURVEYS,
from aerial photographs taken in 1952-53. Field surveys 1959.
Printed 1965.

Copies may be obtained from the Map Distribution Office,
Department of Mines and Technical Surveys, Ottawa.

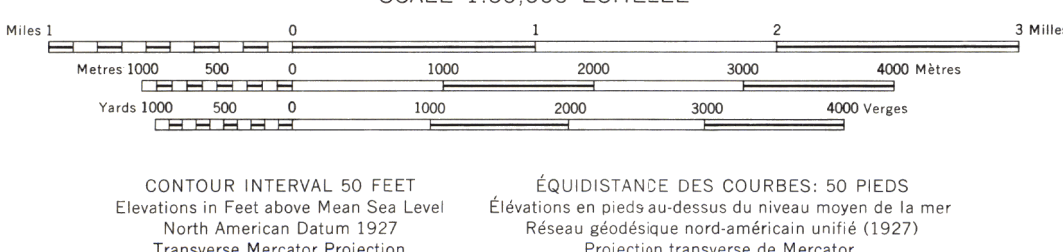
(Joins Lac Assigny 23 A/3E)

NEWFOUNDLAND

Rédigée en 1963, par la DIRECTION DES LEVÉS ET DE LA
CARTOGRAPHIE, MINISTÈRE DES MINES ET DES RE-
LEVÉS TECHNIQUES, d'après des photographies aériennes
prises en 1952-53. Levés sur le terrain en 1959. Imprimée en
1965.

Ces cartes sont en vente au Bureau de distribution des cartes,
ministère des Mines et des Relevés techniques, Ottawa.

Roads:	Routes:
all weather.....	toute saison.....
dry weather.....	période sèche.....
cart track.....	de terre.....
trail or portage.....	sentier ou portage.....
Railway, normal gauge, single track.....	Chemin de fer, voie unique (écartement normal).....
Power transmission line.....	Ligne de transport d'énergie.....
Mine or Open cut.....	Mine ou fosse à ciel ouvert.....
Horizontal control point, with elevation.....	Point géodésique avec cote.....
Bench mark, with elevation.....	Repère de nivellement avec cote.....



Building.....	Bâtiment.....	Barn.....	Grange.....
School.....	École.....	Post Office.....	Bureau de poste.....
Church.....	Église.....	Cemetery.....	Cimetière.....
Lighthouse.....	Phare.....		
River with bridge.....	Rivière avec pont.....		
Stream, intermittent or dry.....	Cours d'eau intermittent ou à sec.....		
Lake intermittent, indefinite.....	Lac intermittent, rive imprécise.....		
Marsh or Swamp.....	Marais ou marécage.....		
Depression contours.....	Courbes de cuvette.....		