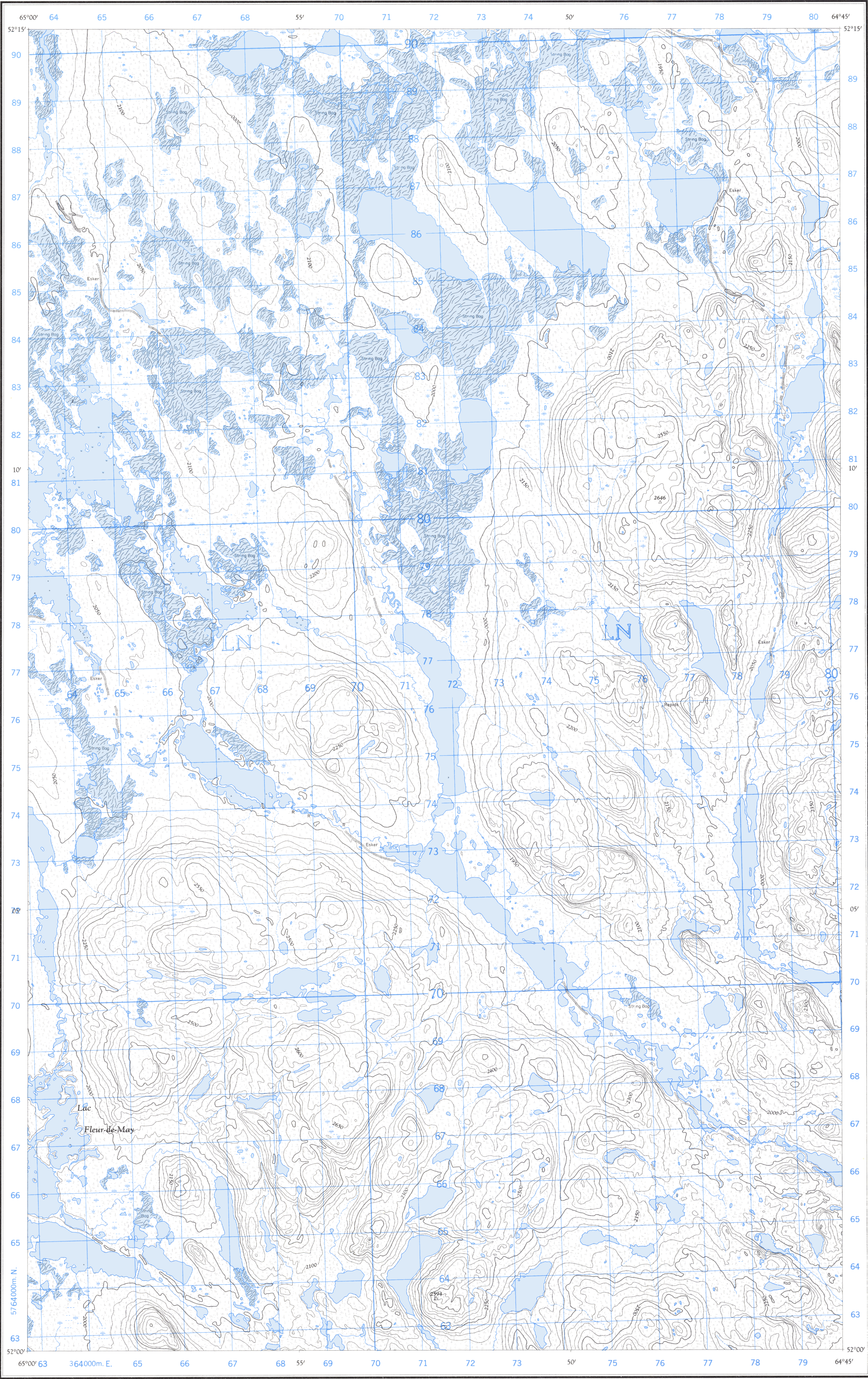
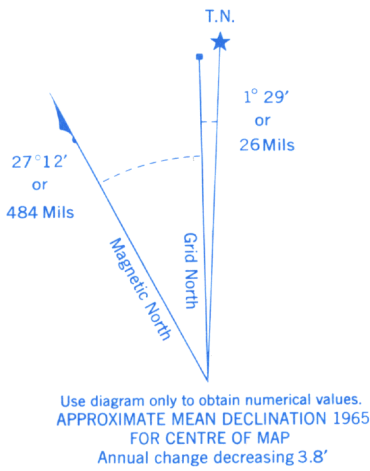


Refer to this map as:	23 A/2 W EDITION 1 ASE SERIES A 771
--------------------------	---

(Joins Lac Asigny 23 A/3 E)



(Joins 23 A/2 E)



GRID ZONE DESIGNATION	100,000 M. SQUARE IDENTIFICATION
20 U	LN

TO GIVE A REFERENCE TO NEAREST 100 METRES

EXAMPLE: STREAM JUNCTION

EASTING: Read number on grid line immediately to left of point.	71
Estimate tenths of a square from this line eastward to point.	718
NORTHING: Read number on grid line immediately below point.	69
Estimate tenths of a square from this line northward to point.	694
MILITARY GRID REFERENCE	718694

Nearest similar grid reference 100,000 metres (about 63 miles)

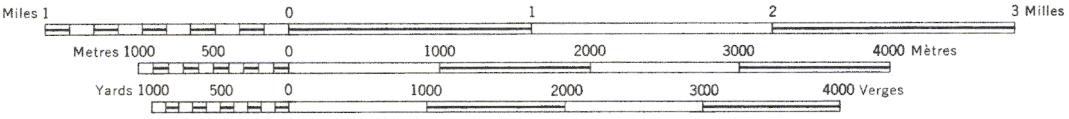
ONE THOUSAND METRE
UNIVERSAL TRANSVERSE MERCATOR GRID
ZONE 20

Compiled, 1963, by the SURVEYS AND MAPPING BRANCH,
DEPARTMENT OF MINES AND TECHNICAL SURVEYS,
from aerial photographs taken in 1952-53. Field surveys 1959,
Printed 1966.

Copies may be obtained from the Map Distribution Office
Department of Mines and Technical Surveys, Ottawa.

NEWFOUNDLAND

SCALE 1:50,000 ÉCHELLE



CONTOUR INTERVAL 50 FEET
Elevations in Feet above Mean Sea Level
North American Datum 1927
Transverse Mercator Projection

ÉQUIDISTANCE DES COURBES: 50 PIEDS
Élévations en pieds au-dessus du niveau moyen de la mer
Réseau géodésique nord-américain unifié (1927)
Projection transverse de Mercator

Building	Bâtiment	Barn	Grange
School	École	Post Office	Bureau de poste
Church	Église	Cemetery	Cimetière
Lighthouse	Phare		
River with bridge	Rivière avec pont		
Stream, intermittent or dry	Cours d'eau intermittent ou à sec		
Lake intermittent, indefinite	Lac intermittent, rive imprécise		
Marsh or Swamp	Marais ou marécage		
Depression contours	Courbes de cuvette		

INSPECTION OF THIS MAP USING 1985 SATELLITE IMAGERY
REVEALED NO CHANGES IN MAJOR HYDROGRAPHIC OR CON-
STRUCTED FEATURES.

UNE VÉRIFICATION DE CETTE CARTE AU MOYEN D'IMAGES
SATELLITE DE 1985 N'A MONTRÉ AUCUN CHANGEMENT EN CE QUI
CONCERNE LES ÉLÉMENTS HYDROGRAPHIQUES OU LES
ÉLÉMENTS RAPPORTÉS (CONSTRUCTIONS) D'IMPORTANCE.