

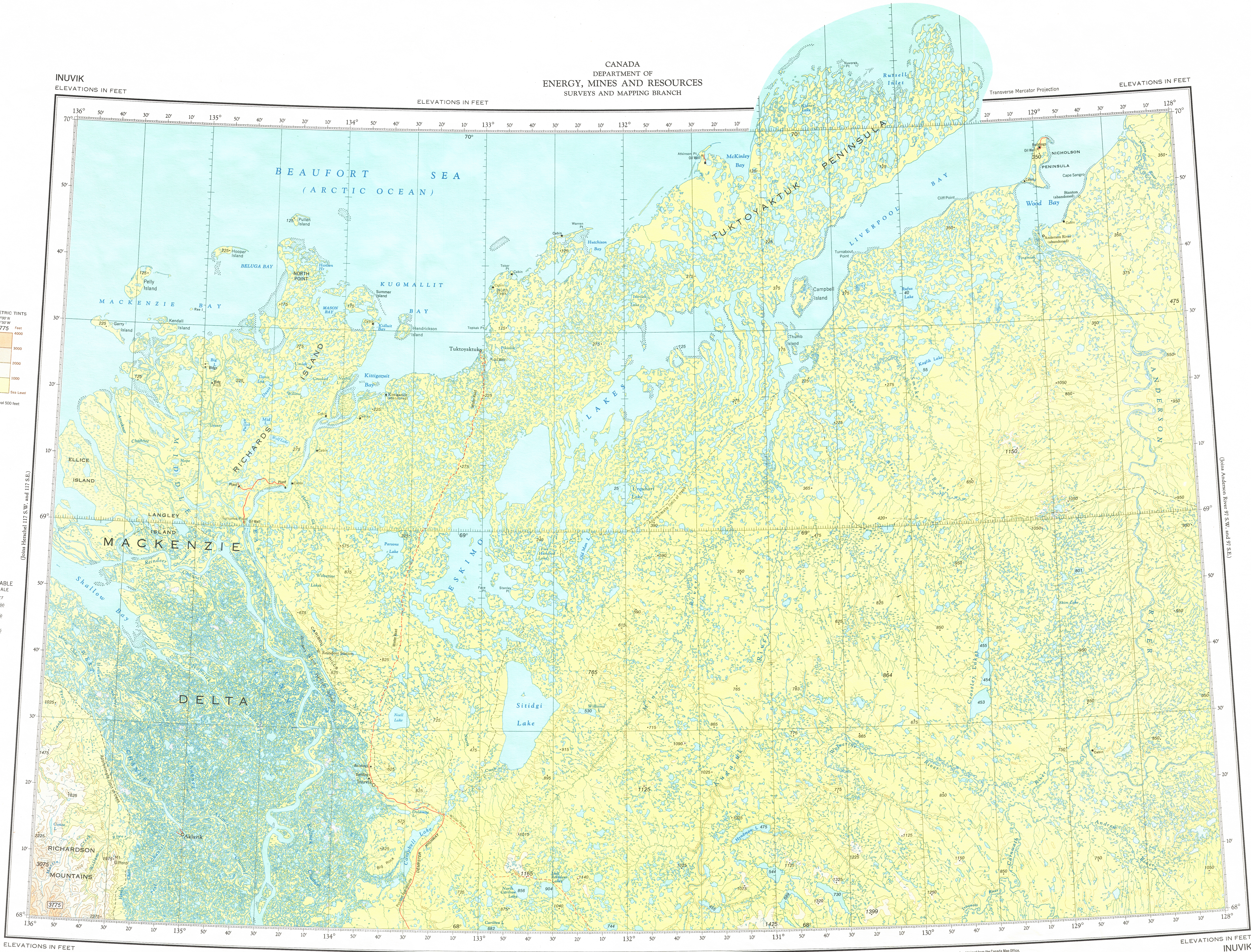
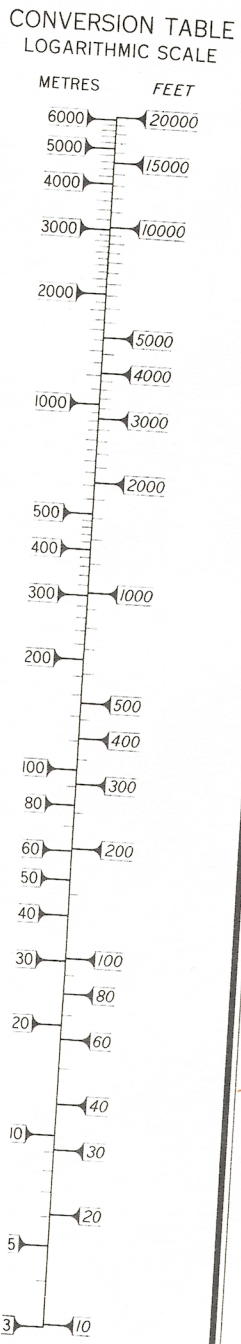
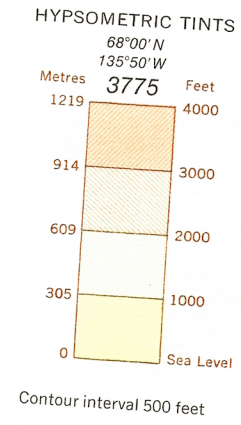
CANADA
DEPARTMENT OF
ENERGY, MINES AND RESOURCES
SURVEYS AND MAPPING BRANCH

INUUVIK
ELEVATIONS IN FEET

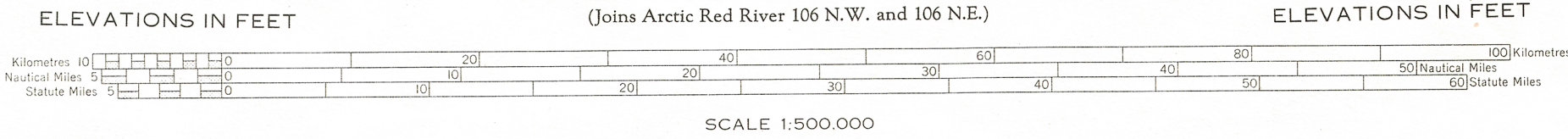
ELEVATIONS IN FEET

Transverse Mercator Projection

ELEVATIONS IN FEET



Produced by the Surveys and Mapping Branch,
Department of Energy, Mines and Resources.
© Canada Copyrights Reserved 1977



Copies may be obtained from the Canada Map Office,
Department of Energy, Mines and Resources, Ottawa,
or your nearest map dealer.

INUUVIK
N.T.S. No. 107 S.W. and 107 S.E.
Base Map, 6th Edition 1977

This document was produced
by scanning the original publication.

Ce document est le produit d'une
numérisation par balayage
de la publication originale.