

FORT MCKENZIE
ELEVATIONS IN FEET

CANADA
DEPARTMENT OF
ENERGY, MINES AND RESOURCES
SURVEYS AND MAPPING BRANCH
(Joins Fort Chimo 24 N.W.)

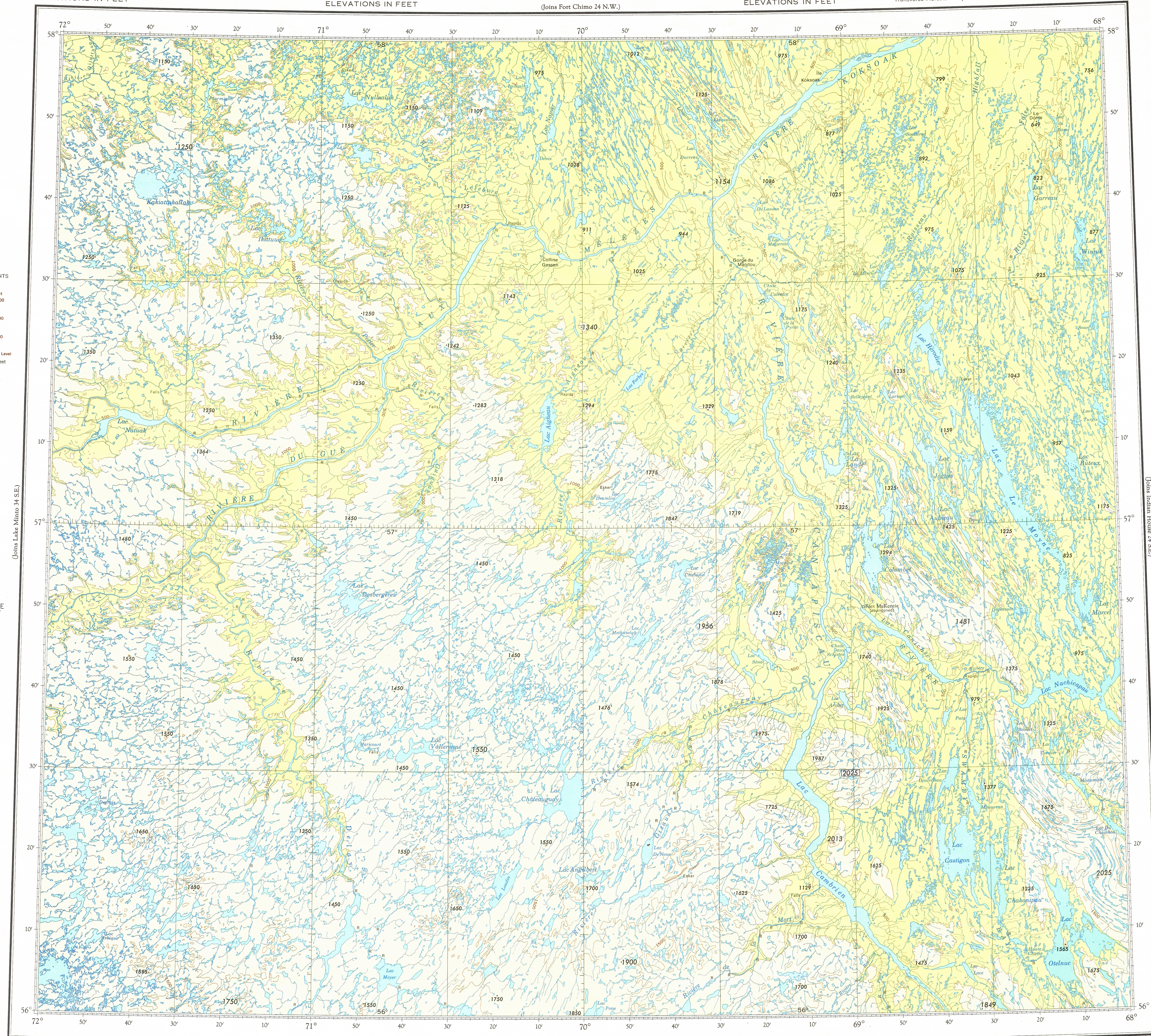
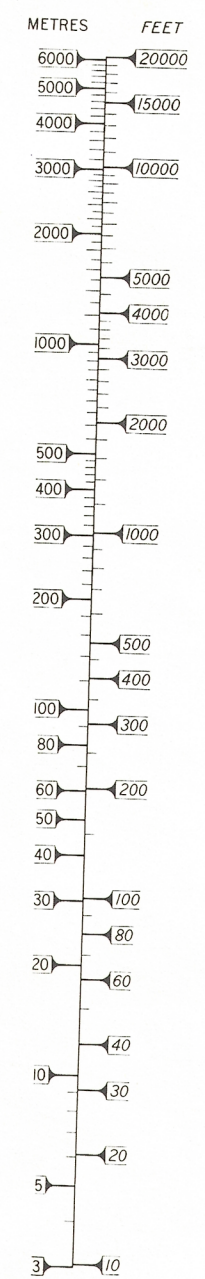
ELEVATIONS IN FEET

Transverse Mercator Projection

ELEVATIONS IN FEET

HYPSONETRIC TINTS
56°30'N
69°00'W
2025
Metres Feet
914 3000
609 2000
305 1000
0 Sea Level
Contour interval 500 feet

CONVERSION TABLE
LOGARITHMIC SCALE



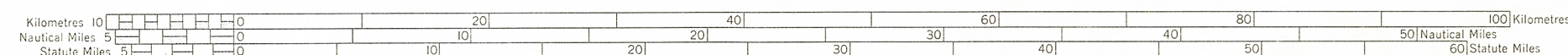
ELEVATIONS IN FEET

© 1979, Her Majesty the Queen in Right of Canada.
Department of Energy, Mines and Resources.

ELEVATIONS IN FEET

(Joins Canapiscu 23 N.W.)

ELEVATIONS IN FEET



SCALE 1:500,000

Produced by the Surveys and Mapping Branch.
Copies may be obtained from the Canada Map Office,
Department of Energy, Mines and Resources, Ottawa,
or your nearest map dealer.

ELEVATIONS IN FEET
FORT MCKENZIE
N.T.S. No. 24 S.W.
Base Map, 6th Edition 1979