

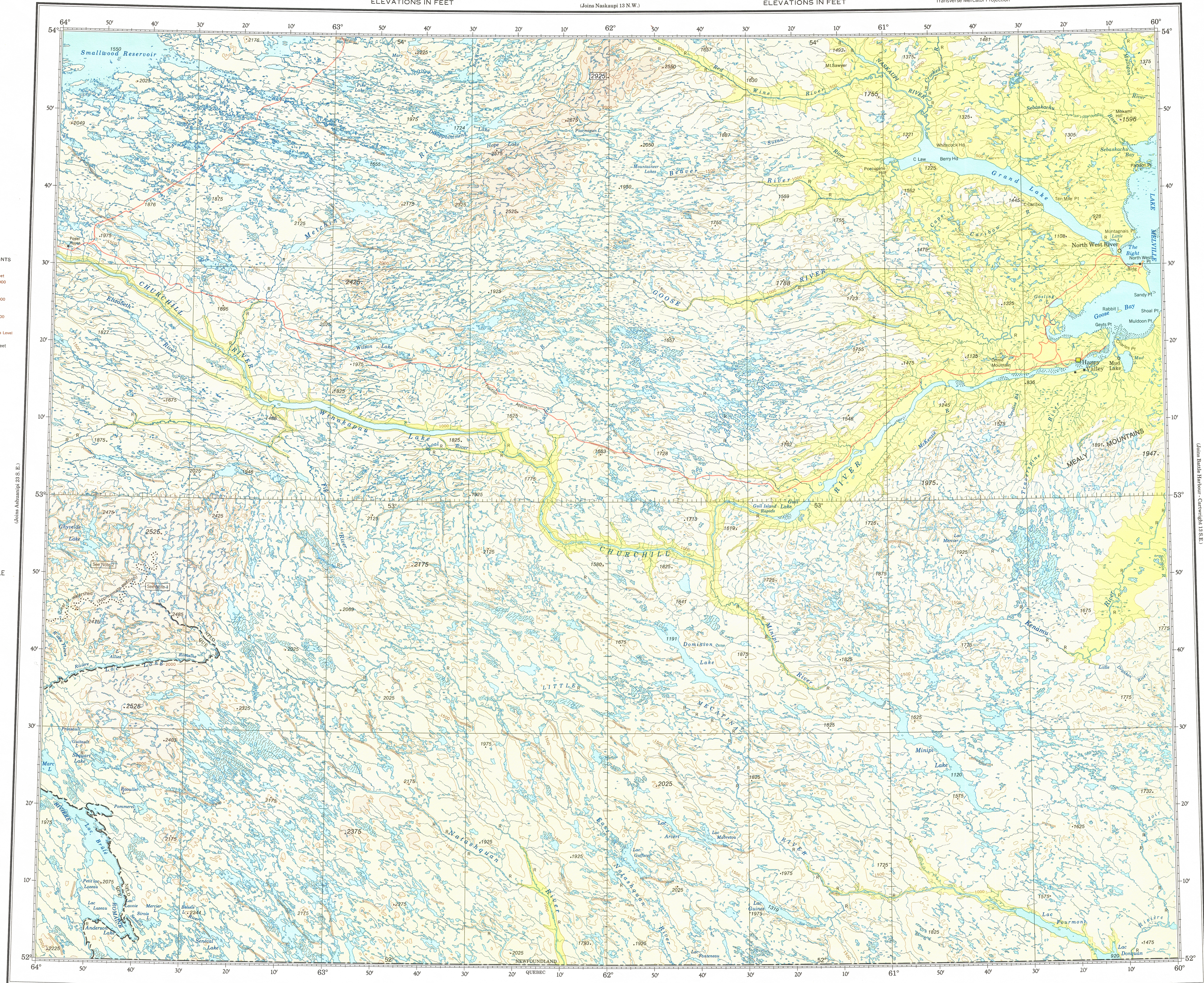
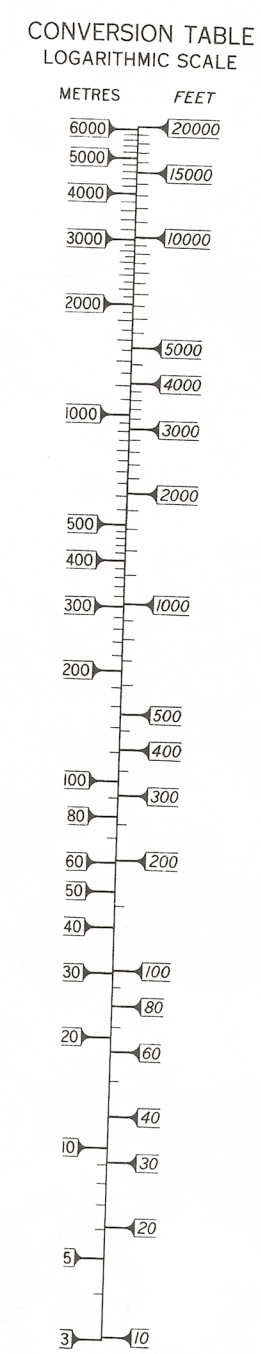
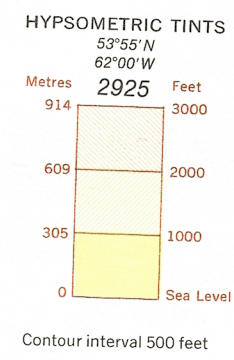
NORTH WEST RIVER
ELEVATIONS IN FEET

CANADA
DEPARTMENT OF
ENERGY, MINES AND RESOURCES
SURVEYS AND MAPPING BRANCH
(Joins Naskapi 13 N.W.)

ELEVATIONS IN FEET

Transverse Mercator Projection

ELEVATIONS IN FEET



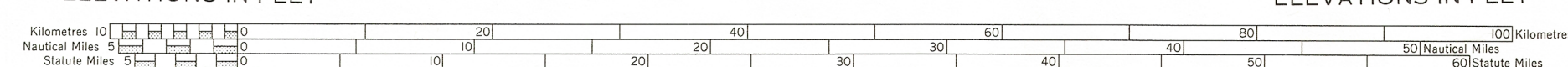
ELEVATIONS IN FEET
Base Map, 6th Edition 1975

Produced by the Surveys and Mapping Branch,
Department of Energy, Mines and Resources.
© Canada Copyrights Reserved 1975

ELEVATIONS IN FEET

(Joins Mingan - Cape Whittle 12 N.W.)

ELEVATIONS IN FEET



SCALE 1:500,000

- Note 1: The boundary between Quebec and Newfoundland in this area is a line along the east bank of Rivière Romaine and its tributaries to their source and thence due north to the crest of the watershed or ridge of land thereat.
- Note 2: The boundary between Quebec and Newfoundland in this area is the crest of the watershed of the river flowing into the Atlantic Ocean; to date of publication it has not been surveyed nor monumented.

Copies may be obtained from the Canada Map Office,
Department of Energy, Mines and Resources, Ottawa,
or your nearest map dealer.

ELEVATIONS IN FEET
NORTH WEST RIVER
N.T.S. No. 13 S.W.