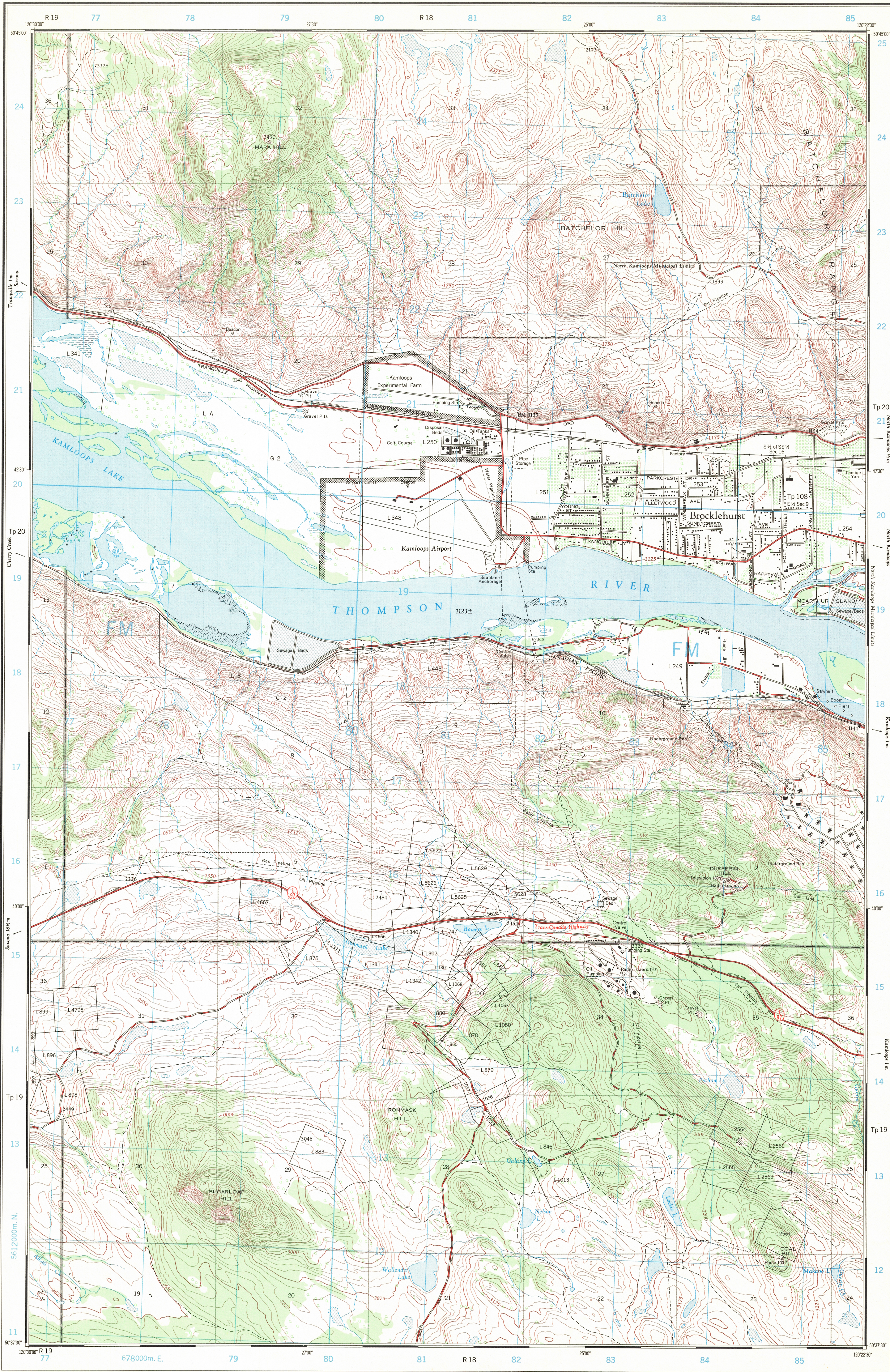


Refer to
this map as:
92-1/9 e
EDITION 1 ASE
SERIES A 921



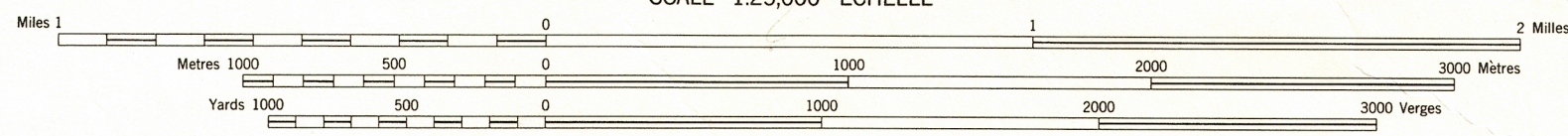
Produced, 1966, by the SURVEYS AND MAPPING BRANCH,
DEPARTMENT OF MINES AND TECHNICAL SURVEYS.
Information depicted current as of 1965.

Copies may be obtained from the Map Distribution Office,
Department of Mines and Technical Surveys, Ottawa.

BROCKLEHURST

KAMLOOPS DIVISION OF YALE DISTRICT
BRITISH COLUMBIA
WEST OF SIXTH MERIDIAN - OUEST DU SIXIÈME MÉRIDIEN

SCALE 1:25,000 ÉCHELLE



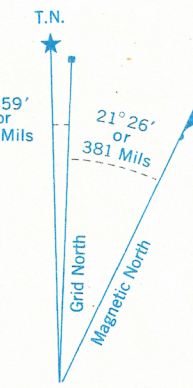
CONTOUR INTERVAL 25 FEET
Elevations in Feet above Mean Sea Level
Transverse Mercator Projection
North American Datum 1927

ÉQUIDISTANCE DES COURBES 25 PIEDS
Élévations en pieds au-dessus du niveau moyen de la mer
Projection transverse de Mercator
Réseau géodésique nord-américain unifié 1927

Roads:	Routes:
hard surface, all weather	route pavée, toute saison
hard surface, all weather	route pavée, toute saison
loose or stabilized surface, all weather	route de gravier, période sèche
loose surface, dry weather	route de gravier, période sèche
cart track	route de terre
trail or portage	sentier ou portage
Railway, normal gauge, single track	chemin de fer, voie unique (écartement normal)
Horizontal control point, with elevation	point géodésique, avec cote
Bench mark, with elevation	repère de nivellement, avec cote
Spot elevation, precise, approximate	point coté, précis, approximatif
Mine or open cut	mine ou fosse à ciel ouvert

Building	Bâtiment
School	École
Cemetery	Cimetière
Rock, bare or easily submerged	Roche, nue ou à fleur d'eau, submergée
Power transmission line	Ligne de transport d'énergie
River with bridge	Rivière avec pont
Stream, intermittent or dry	Cours d'eau intermittent, ou à sec
Lake intermittent, indefinite	Lac intermittent, rive imprécise
Marsh or swamp	Marais ou marécage
Depression contours	Courbes de cuvette
Trees	Arbres
Woods	Bois
Vineyard, Orchard	Vignoble, Verger

CONVERSION SCALE FOR ELEVATIONS
APPROXIMATE MEAN DECLINATION 1965
FOR CENTRE OF MAP
Annual change decreasing 3.2"



Use diagram only to obtain numerical values.
APPROXIMATE MEAN DECLINATION 1965
FOR CENTRE OF MAP
Annual change decreasing 3.2"

GRID ZONE DESIGNATION	100,000 M. SQUARE IDENTIFICATION
10 U	FM

TO GIVE A REFERENCE TO NEAREST 100 METRES
EXAMPLE: SCHOOL
EASTING: Read number on grid line immediately to left of point. Estimate tenths of a square from this line eastward to point.
NORTHING: Read number on grid line immediately below point. Estimate tenths of a square from this line northward to point.
MILITARY GRID REFERENCE: 203
Nearest similar grid reference 100,000 metres (about 63 miles)

ONE THOUSAND METRE
UNIVERSAL TRANSVERSE MERCATOR GRID
ZONE 10

TABLEAU D'ASSEMBLAGE DU SYSTÈME NATIONAL DE RÉFÉRENCE CARTOGRAPHIQUE

92-1/15 a	92-1/15 b	92-1/15 c
92-1/10 a	92-1/10 b	92-1/10 c
92-1/10 a	92-1/10 b	92-1/10 c

INDEX TO ADJOINING MAPS OF THE NATIONAL TOPOGRAPHIC SYSTEM

BROCKLEHURST
92-1/9e
EDITION 1