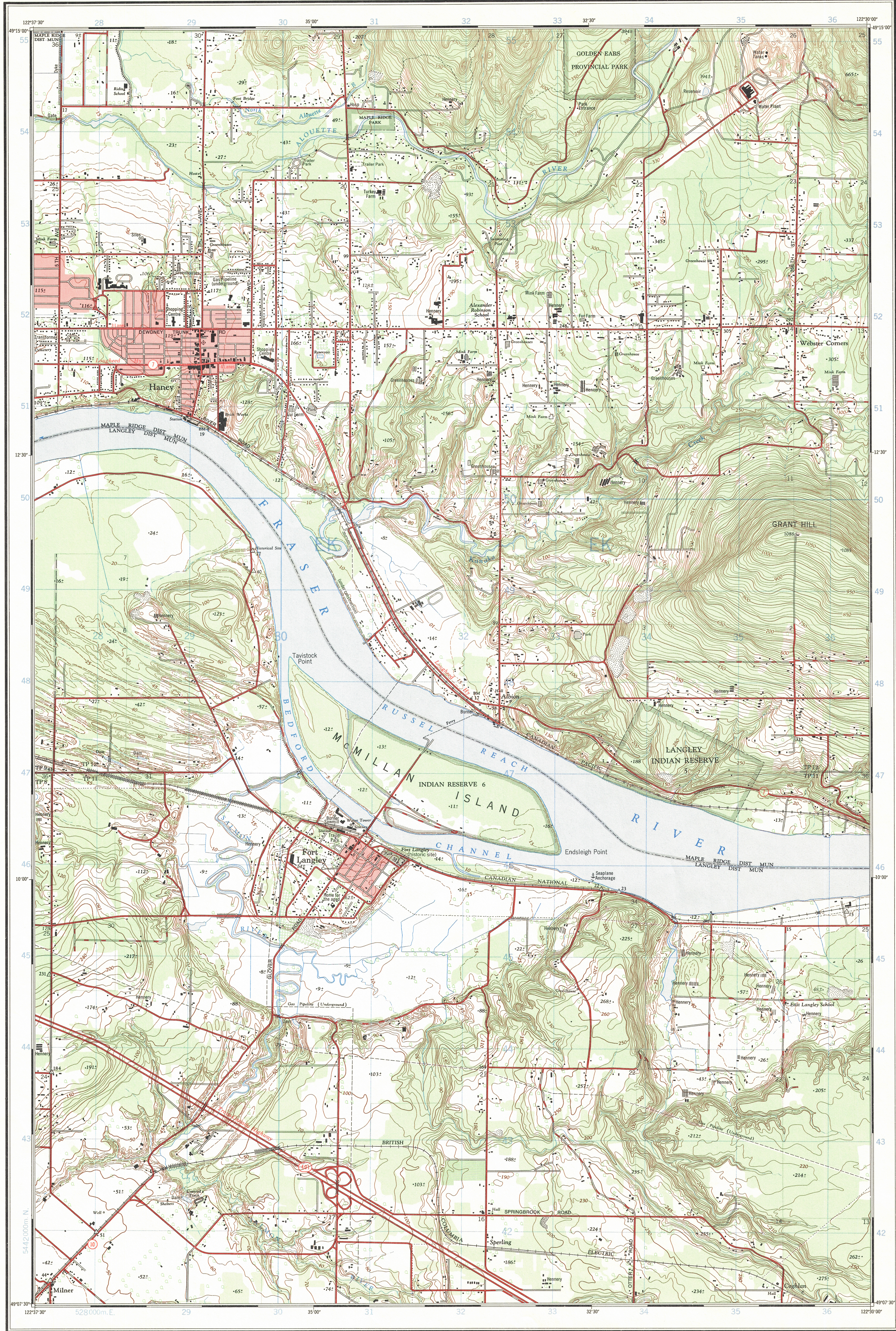
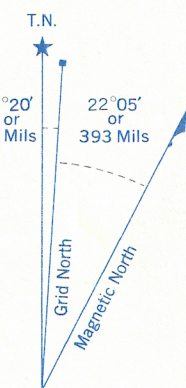


Refer to this map as: 92 G/2h  
EDITION 3  
SERIES A 821



CONVERSION SCALE FOR ELEVATIONS  
Feet  
Meters



Use diagram only to obtain numerical values.  
APPROXIMATE MEAN DECLINATION 1969  
FOR CENTRE OF MAP  
Annual change decreasing 2.8"

ONE THOUSAND METRE  
UNIVERSAL TRANSVERSE MERCATOR GRID  
ZONE 10

GRID ZONE DESIGNATION	100,000 M. SQUARE IDENTIFICATION
10U	EK

EXAMPLE OF METHOD USED TO GIVE A REFERENCE TO NEAREST 100 METRES

THE FOLLOWING GRID REFERENCE IS A SAMPLE ONLY AND DOES NOT REFER TO A POINT ON THIS MAP

99	98	97	96
95	94	93	92

REFERENCE POINT CHURCH (as above)

EASTING: Read number on grid line immediately to left of point  
Estimate tenths of a square from this line eastward to point

NORTHING: Read number on grid line immediately below point  
Estimate tenths of a square from this line northward to point

EXAMPLE MILITARY GRID REFERENCE 975984

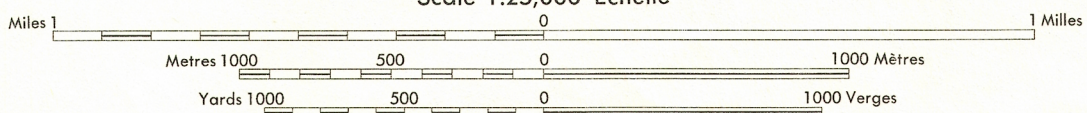
Nearest similar grid reference 100,000 metres (about 63 miles)

Second edition map updated by the SURVEYS AND MAPPING BRANCH, DEPARTMENT OF ENERGY, MINES AND RESOURCES. Information depicted current as of 1968. Printed 1970.

Copies may be obtained from the Map Distribution Office, Department of Energy, Mines and Resources, Ottawa.

# FORT LANGLEY

NEW WESTMINSTER DISTRICT  
BRITISH COLUMBIA  
EAST OF COAST MERIDIAN - EST DU MÉRIDIEN CÔTIER  
Scale 1:25,000 Échelle



Roads:	Routes:
hard surface, all weather.....	pavée, toute saison.....
hard surface, all weather.....	pavée, toute saison.....
loose or stabilized surface, all weather.....	gravier aggloméré, toute saison.....
loose surface, dry weather.....	de gravier période sèche.....
car track.....	de terre.....
trail or portage.....	sentier ou portage.....
Railway, normal gauge, single track.....	Chemin de fer, voie unique (écartement normal).....
Horizontal control point, with elevation.....	Point géodésique, avec cote.....
Bench mark, with elevation.....	Repère de nivellement, avec cote.....
Spot elevation, precise.....	Point coté, précis.....
Mine or open cut.....	Mine ou fosse à ciel ouvert.....

COASTAL INTERVAL 10 FEET  
AUXILIARY COASTAL INTERVAL 5 FEET  
Elevations in feet above Mean Sea Level  
North American Datum 1927  
Transverse Mercator Projection

ÉQUIDISTANCE DES COURBES 10 PIEDS  
ÉQUIDISTANCE DES COURBES INTERMÉDIAIRES 5 PIEDS  
Élevations en pieds au-dessus du niveau moyen de la mer  
Système de référence géodésique nord-américain, 1927  
Projection transverse de Mercator

Building.....	Bâtiment.....	Church.....	Église.....
School.....	École.....	Post Office.....	Bureau de poste.....
Cemetery.....	Cimetière.....	Navigation Light.....	Feu de navigation.....
Rock, bare or swam.....	Roche, nue ou à fleur d'eau.....	Line of transport d'énergie.....	Ligne de transport d'énergie.....
River with bridge.....	Rivière avec pont.....	Rapids, Falls, large, small.....	Rapides, Chutes, grands, petits.....
Lake intermittent, indefinite.....	Lac intermittent, indéfini.....	Marsh or Swamp.....	Marais ou marécage.....
Depression contours.....	Courbes de cuvette.....	Trees.....	Arbres.....
Woods.....	Bois.....	Vineyard, Orchard.....	Vignoble, Verger.....

TABLEAU D'ASSEMBLAGE DU SYSTÈME NATIONAL DE RÉFÉRENCE CARTOGRAPHIQUE

92 G/2h	92 G/2h	92 G/2h
92 G/2h	92 G/2h	92 G/2h
92 G/2h	92 G/2h	92 G/2h