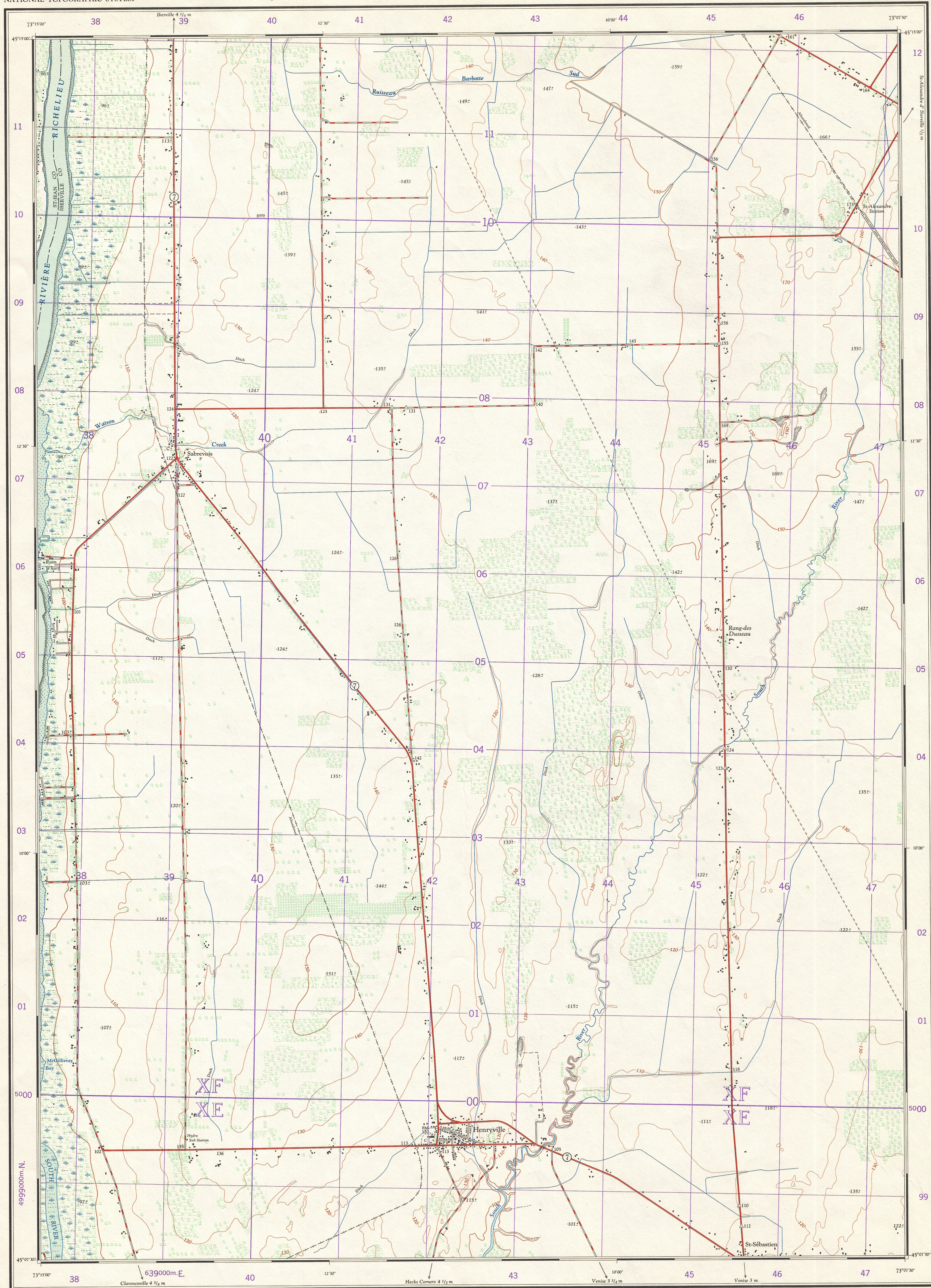


This document was produced
by scanning the original publication.

Ce document est le produit d'une
numérisation par balayage
de la publication originale.



Produced by the ARMY SURVEY ESTABLISHMENT, R.C.E. 1958-60.
Aerial photography 1958.

HENRYVILLE QUEBEC

SCALE 1:25,000

MAGNETIC DECLINATION 15°41' WEST
AT CENTRE OF MAP, 1960
Annual change decreasing 0.7"

INDEX TO ADJOINING SHEETS

31 H/36	31 H/38	31 H/40
ST-JEAN	IBERVILLE	STE-BRIGIDE
31 H/38	31 H/40	31 H/42
ST-BLAISE	HENRYVILLE	ST-BASILE
31 H/40	31 H/42	31 H/44
CANTIC	VENISE	

HENRYVILLE
31 H/38
EDITION 1

Roads:
hard surface, all weather
loose surface, all weather
loose surface, all weather
dry weather
normal gauge, multiple track
normal gauge, single track
abandoned or under construction
underpass, overpass
Tunnel: Drawbridge
Power line; Telephone line

Boundaries:
international, with monument
provincial
county or district
township or parish
city or town
Horizontal control point, with elevation
Bench mark, with elevation
Spot elevation, precise, approximate
Historical site, Cemetery
Mine or open cut; Quarry
Sand or gravel pit

CONTOUR INTERVAL 10 FEET
Elevations in Feet above Mean Sea Level

Transverse Mercator Projection
North American Datum 1927

House; Building
School
Church; Church with spire
Post Office
Radio Station
Tower; Chimney
Well; Tank
Cutting
Embankment
Cliff
Corbourn
depression
approximate

Foreshore flats
Lighthouse
Wharf or pier; Breakwater
Levee or dyke
Rocky reef
Swamp or marsh
Flooded land, seasonal
Intermittent lake, stream
Indefinite shoreline, stream
Ditch or flume
Woods, deciduous, coniferous
Woods; mixed, scrub
Vineyard, Orchard

CONVERSION SCALE FOR ELEVATIONS
Metres
Feet

16° 58' of 302 Miles
1° 17' of 23 Miles
T.N.
Grat North
Use diagram only to obtain numerical values
APPROXIMATE MEAN DECLINATION 1960
FOR CENTRE OF MAP
Annual change decreasing 0.7"

GRID ZONE
DESIGNATION
18T
500
XF
XE
TO GIVE A REFERENCE TO NEAREST 100 METRES
EXAMPLE: SCHOOL
EASTING: Read number on grid line
immediately to left of point
Estimate tenths of a square from
this line eastward to point.
NORTHING: Read number on grid line
immediately below point
Estimate tenths of a square from
this line northward to point.
MILITARY GRID REFERENCE 452053
Nearest similar grid reference 100,000 metres (about 63 miles)

ONE THOUSAND METRE
UNIVERSAL TRANSVERSE MERCATOR GRID
ZONE 18