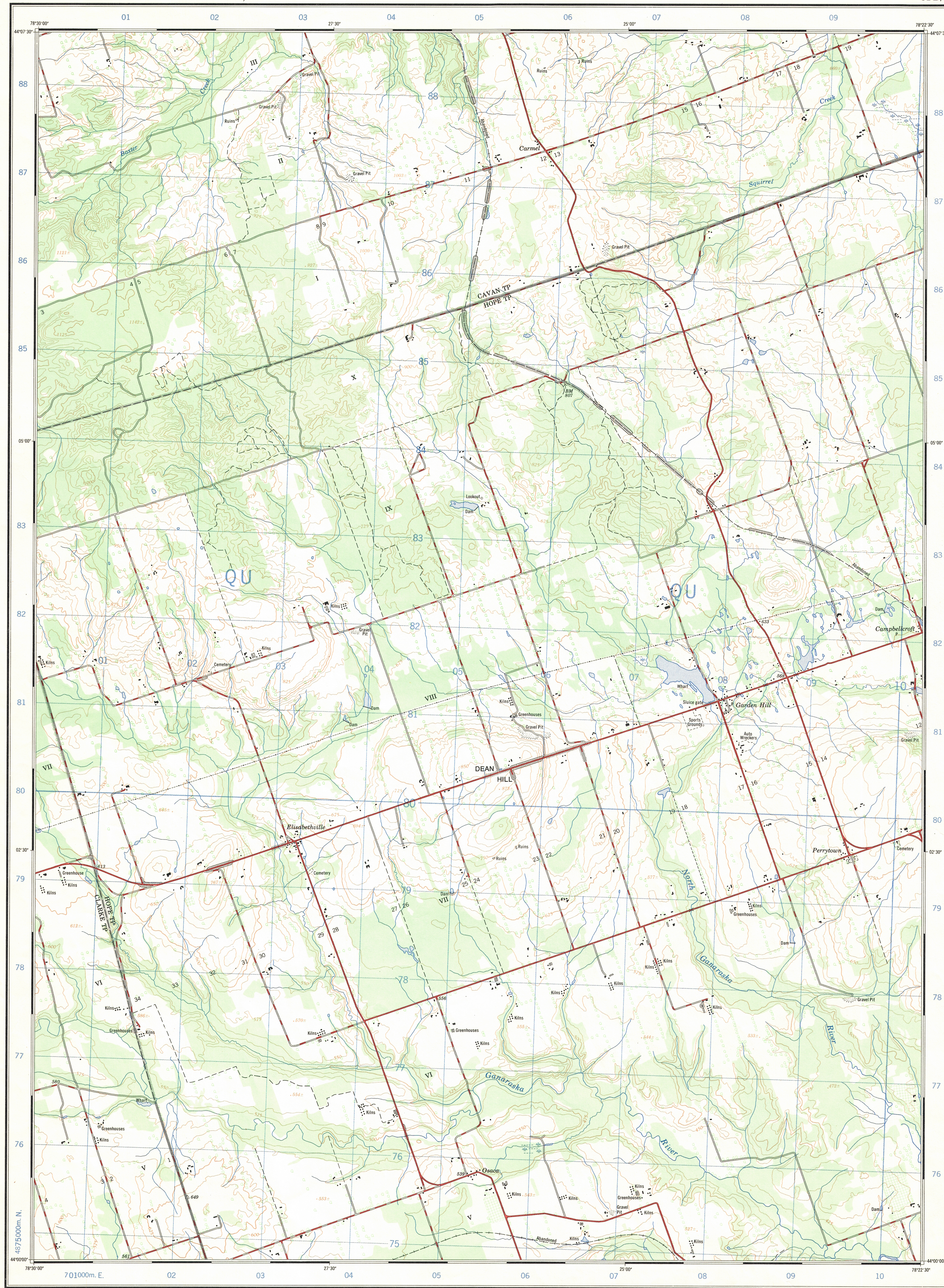


Refer to  
this map as:  
31D/1d  
EDITION 1 MCE  
SERIES A 851

Ce document est le produit d'une  
numérisation par balayage  
de la publication originale.

This document was produced  
by scanning the original publication.



CONVERSION SCALE FOR ELEVATIONS

Feet

Meters

Diagram only to obtain numerical values.  
APPROXIMATE MEAN DECLINATION 1969  
FOR CENTRE OF MAP  
Annual change decreasing 1.2"

GRID ZONE DESIGNATION	100,000 M. SQUARE IDENTIFICATION
17T	QU

TO GIVE A REFERENCE TO NEAREST 100 METRES

EXAMPLE: DAM

EASTING: Road number on grid line immediately to left of point. Estimate tenths of a square from this line eastward to point. 03 7

NORTHING: Road number on grid line immediately below point. Estimate tenths of a square from this line northward to point. 80 9

MILITARY GRID REFERENCE 037809

Nearest similar grid reference 100,000 metres (about 63 miles)

ONE THOUSAND METRE  
UNIVERSAL TRANSVERSE MERCATOR GRID  
ZONE 17

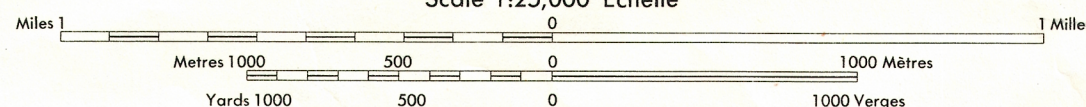
Compiled 1967, by the MAPPING AND CHARTING ESTABLISHMENT,  
DEPARTMENT OF NATIONAL DEFENCE  
Information depicted current as of 1965. Printed 1969.  
Copies may be obtained from the Map Distribution Office,  
Department of Energy, Mines and Resources, Ottawa.

## GARDEN HILL

DURHAM COUNTY

ONTARIO

Scale 1:25,000 Échelle



CONTOUR INTERVAL 25 FEET

Elevations in feet above Mean Sea Level  
North American Datum 1927  
Transverse Mercator Projection

ÉLOIQUISANCE DES COURBES 25 PIEDS

Elevations in pieds au dessus du niveau moyen de la mer  
Réseau de Référence Nord-Américain 1927  
Projection Transverse de Mercator

Roads:	Routes:
hard surface, all weather.....	pavée, toute saison.....
hard surface, all weather.....	pavée, toute saison.....
loose or stabilized surface, all weather.....	gravier aggloméré, toute saison.....
loose surface, dry weather.....	de gravier période sèche.....
cart track.....	de terre.....
trail or portage.....	sentier ou portage.....
Railway, normal gauge, single track.....	Chemin de fer, voie unique (écartement normal).....
Horizontal control point, with elevation.....	Point géodésique, avec cote.....
Bench mark, with elevation.....	Repère de nivellement, avec cote.....
Spot elevation, precise, approximate.....	Point coté, précis, approximatif.....
Mine or open cut.....	Mine ou fosse à ciel ouvert.....

Building.....	Bâtiment.....	Church.....	Eglise.....
School.....	École.....	Post Office.....	Bureau de poste.....
Cemetery.....	Cimetière.....	Navigation Light.....	Feu de navigation.....
Rock, bare or wash.....	Roche, nue ou à fleur d'eau.....		
Power transmission line.....	Ligne de transport d'énergie.....		
River with bridge.....	Rivière avec pont.....		
Rapids, Falls, large small.....	Rapides, Chutes, grands, petits.....		
Lake intermittent, indefinite.....	Lac intermittent, rive imprécise.....		
Marsh or Swamp.....	Marais ou marécage.....		
Depression contours.....	Courbes de cuvette.....		
Trees.....	Arbres.....		
Woods.....	Bois.....		
Vineyard, Orchard.....	Vignoble, Verger.....		

TABLEAU D'ASSEMBLAGE DU SYSTÈME NATIONAL DE RÉFÉRENCE CARTOGRAPHIQUE		
78°37'30"	78°15'00"	44°15'00"
31 D/2h	31 D/1e	31 D/1i
31 D/2a	31 D/1d	31 D/1c
30 M/15h	30 M/16e	30 M/16i
43°52'30"	78°37'30"	78°15'00"
INDEX TO ADJOINING MAPS OF THE NATIONAL TOPOGRAPHIC SYSTEM		

GARDEN HILL  
31 D/1d  
EDITION 1