

Refer to
this map as: 30 M/5f
EDITION 2 MCE
SERIES A 851

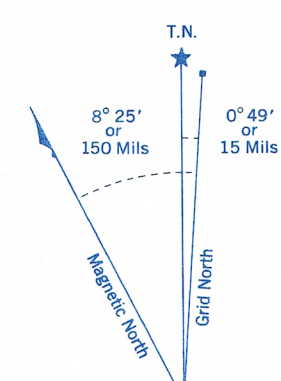
CONVERSION SCALE FOR ELEVATIONS

0 100 200 300 400 500 600 700 800 900 1000

Feet

0 30 60 90 120 150 180 210 240 270 300 330 360 390 420 450 480 510 540 570 600 630 660 690 720 750 780 810 840 870 900 930 960 990 1020 1050 1080 1110 1140 1170 1200

Meters

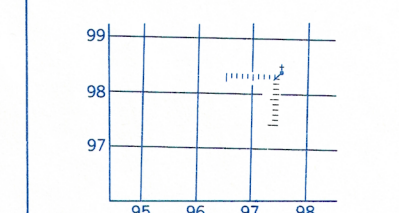


Use diagram only to obtain numerical values.
APPROXIMATE MEAN DECLINATION 1972
FOR CENTRE OF MAP
Annual change increasing 1.3'

ONE THOUSAND METRE
UNIVERSAL TRANSVERSE MERCATOR GRID
ZONE 17

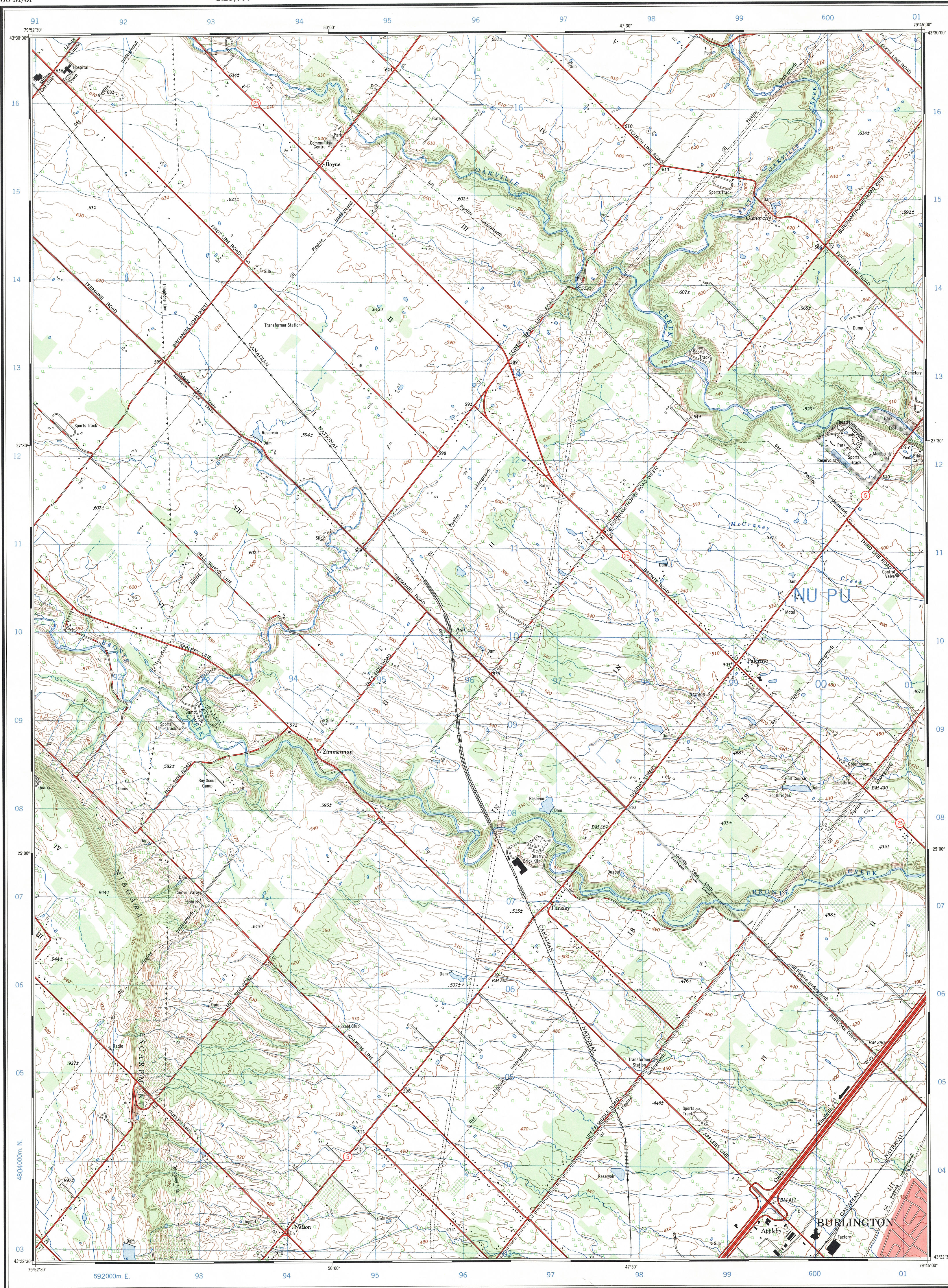
GRID ZONE DESIGNATION	100,000 M. SQUARE IDENTIFICATION
17 T	NUPU

EXAMPLE OF METHOD USED
TO GIVE A REFERENCE TO NEAREST 100 METRES
THE FOLLOWING GRID REFERENCE IS A SAMPLE ONLY
AND DOES NOT REFER TO A POINT ON THIS MAP



REFERENCE POINT	CHURCH	(as above)
EASTING: Read number on grid line immediately to left of point	97	97
Estimate tenths of a square from this line eastward to point	5	97.5
NORTHING: Read number on grid line immediately below point	98	98
Estimate tenths of a square from this line northward to point	4	98.4

EXAMPLE MILITARY GRID REFERENCE 9795984
Nearest similar grid reference 100,000 metres (about 63 miles)



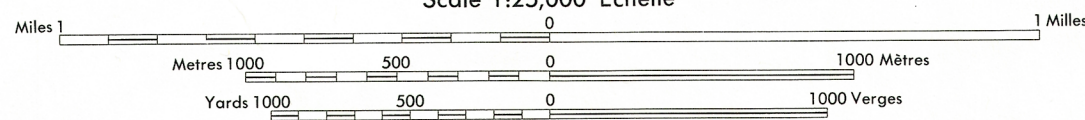
Produced by the SURVEYS AND MAPPING BRANCH,
DEPARTMENT OF ENERGY, MINES AND RESOURCES.
Information described current as of 1970. Printed 1972.

Copies may be obtained from the Map Distribution Office,
Department of Energy, Mines and Resources, Ottawa.
© Canada Copyrights reserved 1972

PALERMO

HALTON COUNTY
ONTARIO

Scale 1:25,000 Échelle



CONTOUR INTERVAL 10 FEET
Elevations in Feet above Mean Sea Level
North American Datum 1927
Transverse Mercator Projection

ÉQUIDISTANCE DES COURBES 10 PIEDS
Élevations en pieds au-dessus du niveau moyen de la mer
Système de référence géodésique nord-américain, 1927
Projection transverse de Mercator

Roads:	Routes:	duel highway	more than 2 lanes
hard surface, all weather.....	paquée, toute saison.....	2 chaussées séparées	plus de 2 voies
hard surface, all weather.....	paquée, toute saison.....	2 voies	moins de 2 voies
loose or stabilized surface, all weather.....	gravier aggloméré, toute saison.....	2 voies ou plus	moins de 2 voies
loose surface, dry weather.....	de gravier, période sèche.....		
cart track.....	de terre.....		
trail or portage.....	sentier ou portage.....		
Railway, normal gauge, single track.....	Chemin de fer, voie unique (écartement normal).....	single	single
Horizontal control point, with elevation.....	Point géodésique, avec cote.....	voie d'évitement	voie d'évitement
Bench mark, with elevation.....	Repère de nivellement, avec cote.....	BM 157	BM 157
Spot elevation, precise.....	Point coté, précis.....		
Mine or open pit.....	Mine ou fosse à ciel ouvert.....		

Building.....	Bâtiment.....	Church.....	Église.....
School.....	École.....	Post Office.....	Bureau de poste.....
Cemetery.....	Cimetière.....	Navigation Light.....	Feu de navigation.....
Rock, bare or awash.....	Roche, nue ou à fleur d'eau.....		
Power transmission line.....	Ligne de transport d'énergie.....		
River with bridge.....	Rivière avec pont.....		
Rapids, Falls, large small.....	Rapides, Chutes, grands, petits.....		
Lake intermittent, indefinite.....	Lac intermittent, rive imprécise.....		
Marsh or Swamp.....	Marais ou marécage.....		
Depression contours.....	Courbes de cuvette.....		
Trees.....	Arbres.....		
Woods.....	Bois.....		
Vineyard, Orchard.....	Vignoble, Verger.....		

TABLEAU D'ASSEMBLAGE DU SYSTÈME NATIONAL
DE RÉFÉRENCE CARTOGRAPHIQUE

80°00'00" 80°00'00" 80°00'00" 80°00'00"

43°37'30" 43°37'30" 43°37'30" 43°37'30"

30 M/124 30 M/12c 30 M/12s

30 M/5a 30 M/5f 30 M/5g,h

30 M/5d 30 M/5c

43°15'00" 43°15'00" 43°15'00" 43°15'00"

INDEX TO ADJOINING MAPS OF
THE NATIONAL TOPOGRAPHIC SYSTEM

PALERMO
30 M/5f
EDITION 2